



Parking Pressures Eased - Thanks for

Your Patience Residents and hall users can expect improved access as short-term parking challenges are addressed.

Many of you will have noticed that parking around the Village Hall and on The Street has been more difficult than usual in recent weeks. This has mainly been due to filming and building work taking place at Lymgne Castle, which has brought extra staff and vehicles into the village.

The Castle has been working with the Parish and District Council to try and ease the pressure, and while a temporary staff car park in one of their fields was briefly halted after a complaint by a resident, this has now been resolved. Staff are once again using the field, which should help to take some of the strain off the Village Hall car park. We are grateful to the Castle team for being willing to find solutions and for their support of the community.

We know this has been frustrating at times for residents and especially for parents bringing children to activities at the Hall. On one occasion, cars were parked on kerbs and grass verges, leaving no space at all for hall users. Even more seriously, inconsiderate parking along The Street recently prevented an ambulance from reaching an emergency. Sadly, the outcome was tragic. This is a reminder to us all that the way we park can have real consequences.

- Please use common sense and consideration when parking:
- Keep The Street clear enough for emergency vehicles at all times.
- Do not block driveways, junctions, or narrow stretches of road.
- Use the Village Hall car park sensibly, and avoid mounting the kerbs or grassed areas.

We expect these problems to be temporary while filming continues, but with care and patience we can make things easier for everyone.

Overnight Parking and Height Barriers

The Council has also been receiving complaints about overnight and long-term parking in the Village Hall car park. After looking at a number of possible solutions – including charging for use of the car park – Councillors felt that introducing fees would unfairly impact local residents using the hall for community activities. Instead, height barriers will be installed over the coming weeks to deter overnight parking and to ensure the car park remains available for those it is intended for.

DIGITAL CHAMPION SUPPORT MONTHLY DROP-IN SESSION

1ST WEDNESDAY OF THE MONTH 15:00-17:00

As part of the Parish Council's well-being initiative, the Digital Champion service will now be available through monthly drop-in sessions at the village hall, starting in September.

From Wednesday, 3rd September, residents can come along to access support on the first Wednesday of the month, between 15:00 and 17:00. These sessions are open to all and do not require an appointment (though depending on residents requirements, bookable slots may be introduced if needed).

So drop in to get help with a wide range of digital queries and issues including (but not limited to), assistance with accessing online services such as NHS accounts, digital parking apps, and other public services. You can also receive guidance on using your personal devices more confidently and securely, whether it's a phone, tablet, or computer.

This service is designed to support anyone looking to resolve specific problems, improve their digital skills, or just ask questions about devices and their applications



What's on in

October



at Lymgne Castle

Friday 10th October Seasonal Centrepieces

6:00pm - 7:30pm

Create a seasonal floral arrangement this Autumn
What's included: seasonal apron & glass of bubbles upon arrival, a gorgeous range of flowers/foliage & a pumpkin as your vase
£50 per person

Wednesday 15th October Castle Book Club

6:30pm - 8:30pm

Bring your latest read and sit and enjoy a drink in the Great Hall or watch the glorious sunset on our terrace.

Free entry - socialising optional!

Saturday 18th October An Evening with King Henry VIII

Arrival 6:30pm

Join us for a living history experience unlike any other. Dine like nobility at a sumptuous Tudor banquet, all served in the Great Hall under candlelight.
£55 per head

Sunday Roast Lunches

Our famous Sunday Roast Lunches are being served on the following dates in September - 5th, 12th, 19th, 26th

Book now to avoid disappointment



Please note that due to private events, the Castle will be closed to the public on the following dates:
31st October (subject to change)



Please contact us to book on 01303 533533 or enquiries@lympnecastle.com



LYMPNE VILLAGE HALL FILM CLUB

IN THE HARRY MARGARY HALL

Films will be shown every 4th Tuesday of the month (not December).

MAKE A DATE IN YOUR DIARY FOR THIS POPULAR VILLAGE EVENT. ALL PROFITS GO TO THE VILLAGE HALL FUND.

7.15 for a 7.30 start FREE MEMBERSHIP

Entrance fee of £5.00 includes refreshments and lucky draw ticket.

Showing on **28th October**



BELLE



A journey of identity and justice in 18th Century England– Based on a true story

Showing on 25th November

THE ITALIAN JOB

The original and best! A star studded comedy and classic heist fun starring

Sir Michael Cane and Noel Coward

We reserve the right to show a substitute film should the need arise or to refuse admission. Children under 16 must be accompanied by an adult (ID will be requested).

STUDYING ARCHAEOLOGY AND HISTORY IN LYMPNE

Fourteen SHAL members took part in a five day practical Archaeology Course held on the Village Playing Field and led by Keith Parfitt, a local archaeologist. Two trenches were dug to try to find evidence of Roman activity where a feature had previously been indicated. The unearthed ragstone led to speculation that it was part of a Roman road, but after initial excitement, it was identified as natural bedrock. However, despite the variable and, at times, inclement weather the group's spirits were not dampened and Keith cheerfully informed everyone that the site could now be eliminated from the search.

Although no road was found the team had learned how a professional archaeological excavation should be carried out including recording the results. The group was taught to take measurements of the site location accurately by use of trigonometry. They practiced drawing everything to scale on Perma-film and learned about identification of soil types, and any contents found. This exceptionally successful course met the aim of helping participants acquire skills to become better amateur archaeologists.

SHAL extends thanks to Keith for imparting some of his considerable knowledge with patience and good humour.

David Ian

FURNITURE & BEDS

REMOVAL SERVICE

LET US MOVE YOU

Providing Flexibility to make your move run smoothly for you

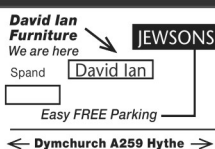
- Local, National & European Removals
- Home Office or Commercial
- House Clearance & Disposal Service Available
- Short Notice No Problem, Same Day Service Available
- Storage Facilities
- Full Packing Service Available
- No Job Too Small
- CALL THE EXPERTS



www.davidianfurniture.com

CALL NOW FOR A FREE QUOTE
01303 264052

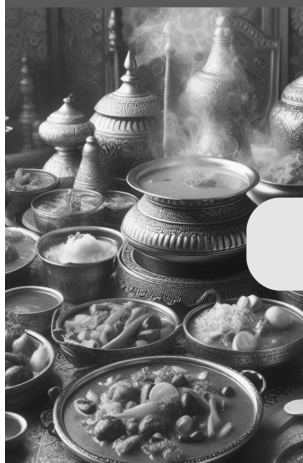
Dymchurch Road | Hythe | Kent
Email: sales@davidianfurnitureltd.com



The County Members



Join Us for Our Curry Buffet Night!



Indulge in a delicious evening of curry delights

Enjoy **£18.49** for an all-you-can-eat feast, starting Tuesday, 12th August, from 6pm onwards.

Reserve Your Table Today!

Call **01303-847432** to book your table and make sure you don't miss this flavorful celebration! Look out for our Facebook adverts for updates.

OPENING TIMES

MONDAY (BAR OPEN) 12pm-7pm (FOOD SERVED) 12-6pm
 TUESDAY (BAR OPEN) 12-9pm (FOOD SERVED) 12-8pm
 WEDNESDAY (BAR OPEN) 12-9pm (FOOD SERVED) 12-8pm
 THURSDAY (BAR OPEN) 12-10pm (FOOD SERVED) 12-9pm
 FRIDAY (BAR OPEN) 12-11pm (FOOD SERVED) 12-10pm
 SATURDAY (BAR OPEN) 12-10pm (FOOD SERVED) 12-9pm
 SUNDAY (BAR OPEN) 12-8pm (FOOD SERVED) 12-7pm



St Stephen's Church Services in October

Sunday 5th Sep	11am Holy Communion
Sunday 12th Sep	11am Family Harvest Service
Sunday 19th Sep	11am Morning Worship
Sunday 26th Sep	11am Holy Communion
Sunday 26th Sep	4pm Songs of Praise

Sunday Club (ages 3-10)
Meet 10-11am Lads' club Saltwood
Contact Christine Clover:
Call 0300 030 1662 or text 07379 877846
christineclover@lympneandsaltwoodchurches.uk

1st Sunday of the Month, 9-45am, Lads' Club
BUBBLE CHURCH

LYMPNE & SALTWOOD TODDLERS
Come and join us at Lympne & Saltwood Toddlers
10 - 11:30am
Thursday mornings in the Harry Margary Hall, Aldington Road, Lympne

Songs Of Praise, Lympne church on Sunday 26th October at 4pm

Songs of Praise

Come and enjoy favourite Songs & Hymns.

Date for your Diaries; Saturday Nov 15th
Christmas Creative Arts Day
In Lympne church



What do Churchwardens do?



Lympne Church once again has two churchwardens: Chris Laker and Rachel Cornish. Churchwardens are elected volunteers who support the life of the parish in many ways. One key responsibility is looking after the church building and churchyard, not only for those who attend services, but for the whole village.

The church is part of our shared heritage. Whether you've paused to admire the view, lit a candle at Christmas, or simply enjoyed the peace of the space, you've experienced something the churchwardens and volunteers work hard to preserve for future generations.

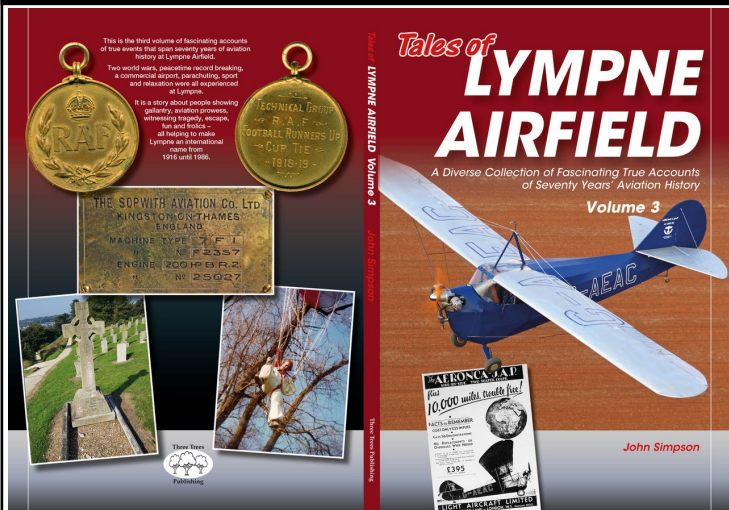
Caring for a Shared Heritage

We both work full time and rely on a large team of volunteers, from the congregation and the wider village community, who help care for the church building and churchyard. In past newsletters we've highlighted those who help maintain the churchyard, but we're also thankful for those who clean, carry out repairs, and provide refreshments at services and events.

It's deeply rewarding to play a part in looking after such a significant place in village life. If you'd like to get involved, even occasionally, we'd be very glad to hear from you.

Rachel and Chris; lympnechurch@gmail.com

LYMPNE AIRFIELD HISTORY SOCIETY



Lympne Airfield History Society

Our next presentation is on **November 3rd** and will be presented by Kent based author **Martin Lloyd** who will be talking about **Buzz Bombs & Bicycles** as he rides through northern France examining V1 launch sites from 1944.

Our meetings start at **7.30pm** at **Lympne Church**.
Doors open **6.30pm**. Admission **£3**. Refreshments available.

This month, after the successful launch of his final book in the trilogy Tales of Lympne Airfield, John explains what volume 3 has in store.

Tales of Lympne Airfield Volume 3

by John Simpson

When I published volume 2 of *Tales of Lympne Airfield* I was often asked if there was going to be a 3rd volume. I had a few areas I could cover, but not enough for a full blown 3rd edition. The need to continue my regular *Lympne Newsletter* and *Folkestone Herald* columns meant I had to continue to research material of the airfield history. So I had a few working chapters, then along came more fascinating discoveries including the WW1 era death certificate documenting a crash at Lympne, and a Sopwith data plate found by a local metal detectorist opened up two more investigations worthy of publishing. There was more to follow, so it was obvious *Tales of Lympne Airfield* would be a trilogy.

As the first two volumes continued to sell, including to local museums, online booksellers and book shops, more people came forward with interesting stories to tell, or introduced me to other people worthy of speaking with. It had become a race against time as memories were fading, and in a couple of cases it was too late to speak with such people. Others were willing and able to be interviewed. Bit by bit, I was able to tease facts out of interviewees which made a fuller account and blended into a bigger framework from earlier research. I soon could see another interesting final volume coming together.

The *Silver City Airways* era at Lympne initially proved a difficult nut to crack, as I endeavoured to research first hand accounts from 1948 to 1954, before their switch to Lydd Ferryfield. The *Silver City* retired staff association told me there were no staff members known to be alive so could not help me. So I have had to rely on passengers and local residents for their memories. I published a plea for such stories via the *Folkestone Herald* online as such people are few in number. Happily a few responses came forward to add to the meagre information I had assembled initially. So a timely look back at *Silver City* at Lympne is just one of the thirty chapters in this book, running to 132 pages with over 150 photographs. Contact me to secure your copy at a special discounted price of £10 (£15.50 through booksellers) delivered to your door.

FOR INFO -Contact: John Simpson on
07508 708725 or email:
johnsimpson43@btinternet.com

LYMPNE FELLOWSHIP-Last month's AGM went smoothly, with a vote of grateful thanks to the Committee for all their hard work over the past year. Sadly Jill Oliver stepped down for personal reasons but all other members were happy to continue for another year. The formal meeting over, time was spent socialising and catching up on events over the previous month. October's meeting is entitled "What Shall We Read?" Book recommendations shared plus some poetry readings. Lympne Fellowship normally meets at 1.15pm in the Harry Margary Hall on the 2nd Thursday of the month, with a programme of interesting and informative talks and activities. Please contact Jill Page on 07846 819693 for more information

LYMPNE SHORT MAT BOWLS CLUB

Lympne Short Mat Bowling Club meets every Monday and Thursday from 7.00 to 9.30pm October until April.
IT IS A SMALL, FRIENDLY CLUB AND WE CURRENTLY HAVE VACANCIES FOR NEW MEMBERS.

Come along and try your hand at this skillfull and enjoyable game, The first THREE sessions are FREE. There is no need to buy any bowls as the club has a few sets which can be used until you have decided whether you are going to enjoy the game. All you need is a pair of carpet slippers or SMOOTH SOLED SHOES.

There are in-house competitions, as well as rollups and we also participate in the Shepway League with some success.

Do come along you will be made most welcome.
For further details please text 07484377139 or email:- joyce_groom@btinternet.com

STUDYING HISTORY AND ARCHAEOLOGY IN LYMPNE – (SHAL) ‘Saxons – The Kingdom of Kent’ by Andy Linklater

The Romans withdrew from Kent c. 400/410 AD and tribes including Angles and Saxons began to invade from Europe. By 450 AD, a distinct Saxon culture was flourishing.

Among the ruins of sophisticated Roman structures, simpler, irregular buildings of wattle and daub sprang up in towns and rural areas. Archaeologists found SFBs (Sunken Featured Buildings) called Grubenhäuser that were used as workshops, artisans' buildings and possibly dwellings. Excavations revealed loom weights, and woodworking and agricultural tools.

Coil pots were intricately decorated; knives were varied and made for specific tasks. Lympe residents may be surprised to learn that a large selection of iron domestic objects was found in West Hythe that are now housed in the British Museum.

Personal adornment was evidenced by pins with ornamental heads, three part riveted bone combs, silver knot rings, glass beads and imported amber and amethyst; the Saxons were big traders. Unique glass beakers with rounded bases were found and appear only to have been made in Kent.

Saxon cemeteries were located on hillsides facing SE, near prehistoric barrows. Pagans buried personal items with their dead for the afterlife. Men's graves contained spears, knives, shields and swords and some skulls and skeletons showed evidence consistent with battle wounds.

Women's graves contained weaving batons, brooches, buckets, and other domestic items. One contained what may have been a type of headdress that had been beautifully crafted with golden zigzag threads.

Burial practices changed after Kent was Christianised in the late 6th century AD, burial and cross symbols began to be more commonly used. This change occurred after Aethelbert, first legitimate King of Kent, married Bertha, a Christian Frankish princess who influenced him to convert to Christianity and Christianise the population. Then in 597 AD, Pope Gregory the Great sent Augustine to convert the pagans too and the process accelerated.

Kent was a 'gateway' county for people from Europe and so for defensive purposes old Roman forts were reconstructed to guard against raids from overseas. The ruins of some old forts can still be seen, for example, in Lympe, Reculver and Richborough.

Eventually, Kent became dominated by Christian Mercia in the 8th century and was 'absorbed' by Christian Wessex in the 9th century.

Thus, the foundations were laid for the Kingdom that ultimately became England.

Next meeting at the Harry Margary Hall, Lympe - 7.30 PM - October 21st - talk by Sam Moorhead on Roman coin finds from Lympe and close localities in Kent. TO BE CONFIRMED



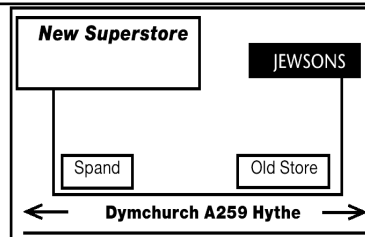
KENT GARDENER Now we have reached October there is a distinct nip in the air as the sun loses its strength. After the summer drought the gardens have revived, and grass is growing again so time to get the mower out, at least the grass will not grow so quickly now. Once you could say this would be the last cut but not anymore. If Autumn is mild there will be more cuts before it is time to get the mower and other garden tools serviced or sharpened. Scarifying is hard work, but it clears dead grass and debris from the lawn giving it room to breathe and absorb rain. Autumn feed and overseed any bare patches cover with fleece or birds will have a feast. Keep dead heading perennials to promote more flowers and divide clump forming ones like day lilies and replant. Don't cut back rigid stems, leaves and slightly tender plants like salvias or penstemon as the old growth helps to protect them from frost and looks good too. They also help the birds and insects find protection and food. Trim the soft growth from plants as it yellows, it becomes soggy after frost. Cut out fruited canes of blackberries and summer raspberries and tie in the new. Compost spent vegetable plants and take in root crops and store in moist sand. Onion sets and garlic can be planted and check over any brassicas, which will over winter, for late caterpillars. Make sure any netting is taught to keep birds off and prevent them getting entangled. Net ponds to catch falling leaves. Happy gardening.

David Ian
FURNITURE & BEDS
SUPERSTORE

Dymchurch Road, Hythe, Kent

01303 264052

Email: sales@davidianfurnitureltd.com



REMOVAL AND STORAGE
CALL NOW FOR A FREE QUOTE
*TERMS & CONDITIONS APPLY

OPEN 6 DAYS A WEEK

Mon - Fri 9am - 5.30pm Sat 9am - 5pm

10%
Discount
for
Lympe Residents
at

David Ian
FURNITURE & BEDS
SUPERSTORE

LYMPNE PARISH COUNCIL

CONTACT DETAILS

If you have any queries regarding local issues, or any other matters you wish to raise, you can contact Lymgne Parish Councillors

Current Members

Chair Mike Boor

Vice Chair Anne Beales

Claire Yates

Michael Potter

Judith East

Michael McAuley

James Sinclair

Correspondence should be sent to the Parish Clerk

Jeff Lawrence

29 Honeywood Close Lymgne

Tel: 01303 883 228

e-mail: clerk@

lympneparishcouncil.gov.uk

PLANNING MATTERS

Due to issues with space available planning applications are not published in the newsletter.

All planning matters are published with the agenda which can be found on the village notice boards or on line at

www.lympneparishcouncil.gov.uk/meetings



THE LYMPNE PLAYING FIELD AND VILLAGE HALL COMMITTEE

Notice of Annual General Meeting

Tuesday 11th November, 8pm, in the main hall

This is your chance to meet the committee, hear about what we've been up to in the last year and what we've got planned for the coming year, examine our financial accounts and raise any questions, or maybe even get involved yourself.

Our secretary stood down last year, so I would be particularly interested in hearing from anyone who would be interested in volunteering for this important role. If you want to know more,

email chair@lympnevillagehall.co.uk

ST STEPHEN'S CHURCH, LYMPNE



SATURDAY 18 OCTOBER 2025

10.30am - 12.30pm

- Come and join us for coffee, cakes and savoury bakes in the tranquility of our beautiful church with stunning views over Romney Marsh.
- Take a break while out for that walk (well-behaved dogs welcome)
- Catch up with old friends and new

Proceeds to maintenance of the church plus a donation to this month's **nominated charity**:

**HOME FARM TRUST
LYMPNE PLACE**

squiggle

WILLS

TRUSTS

POWER OF
ATTORNEY

PROBATE

Death isn't something most of us want to talk about or think about. And why would we? But what we DO want is for our loved ones to be looked after when we're gone.

And yet, nearly half of us don't have a will or even a plan for our estate when we die. It's something many just don't get round to - despite knowing that we should.

Book your free consultation with Squiggle today.

01233 659796

www.squiggleconsult.co.uk

Squiggle Consult Ltd

11 Park Barn, Evegate Business Park, Mersham, TN25 6SX
Registered Company - 10816512



Private Home Care

Specialists in 1-to-1 home care
of elderly and vulnerable people

- Medication
- Personal Care
- Security Checks
- Outings
- Domestic
- Wake / Sleep Nights
- Live in

Disability Cars for
our clients
available 24 hours
a day



Office at 7 Great Conduit Street, Hythe

☎ **01303 847422**

☎ **0756 3636 332**

✉ privatehomecarekent@gmail.com

🌐 Privatehomecare.co.uk

LOCAL TRADES



Studio J
Hair Salon
A family business
in the heart of
Lympne.

20% OFF CUTS FOR ALL NEW CLIENTS

Call us on 01303 267877,
text 07833 031717 or find us on
instagram @studio_j_hair_lympne.



07745 532075

Mobile Foot Health Practitioners.
Treating and managing foot and nail
conditions, corns, callus, fungal,
fingernails, diabetic foot care
www.eastkentfootcare.co.uk

ASHTON TREE CARE

Hedge cutting , stump grinding ,
tree surgery
All work fully insured
Contact 07929 627 622
ashtontreecare@gmail.com

PLUMBER

City & Guilds qualified
Affordable, Reliable and Local
All work fully insured and
guaranteed. Wide range of hot
and cold water services. See
website for further details,
rates and customer feedback.
Call now on 07899 034 695
for a no-obligation, free quote
or visit our website:
www.condicoplumbing.co.uk

NUMERACY OR LITERACY SUPPORT

Would a young person you
know benefit from additional
numeracy and/or
literacy support?
I am a qualified and
experienced SEN teacher
with 20 years experience
I have a limited number of 1:1/
small group sessions available
Sessions from £12.50p/h
Contact Bea 07412 808 098

LYMPNE PARISH COUNCIL CANNOT ACCEPT RESPONSIBILITY FOR THE ACCURACY OF ANY
OF THE DETAILS ADVERTISED. YOU ARE STRONGLY RECOMMENDED TO TAKE
APPROPRIATE ADVICE BEFORE ENTERING INTO ANY COMMITMENT.

LOCAL BATHROOM and KITCHEN FITTER

Reliable, professional, 20 years experience
fitting bathrooms, tiling, plumbing and general
building work.
Call Andrew 07788 728 787
for a free estimate.



ACC ELECTRICAL

Fuse board changes,
cctv, alarms, PAT
testing, smoke alarms, landlord safety
checks,
security, lighting, rewires, smoke
detectors and much more!
Free Quotations and friendly
reliable service
01303 211 011/07595336880
info@accelectrical.co.uk

WRAIGHT'S MOWERS

NEWINGREEN (A20)
Servicing, Repairs, Sharpening
Spares and Sales
all makes of petrol & electric mowers.
Benham Water Farm,
Ashford Road (A20)
Newingreen, CT214JD
Opposite old race course
Tel 07733293315

TAXI IN THE VILLAGE.

Short, long or any distance.
Airport, docks, etc.
Ask for a quote.
Speak to Geoff
Phone 07703 444 814

DN PLASTERING SERVICES

Local, Trustworthy & Reliable
Over 25 Years Experience
Call Darren 07932 002 442
dnplasteringservices@gmail.com

CURTAINS

Handmade
curtains, blinds and soft furnishings.
Curtain alterations.
Call Valery Wren
01303 237 755

THE EXECUTIVES SUITE

Virtual Support Service
Remotely supporting time limited
business owners
with administrative tasks.
Travel, diary management,
inbox detox & lifestyle
management.
Contact Natalie Dowsett at
natalie@theexecutivesuite.co.uk

CATHERINE'S CLEANING

Over 4 years Cleaning Experience
Regular Cleans
Spring Cleans
Serving Lympne, Hythe
and surrounding areas.
DBS checked, references on request.
Call or message Catherine on:
07957991266
Email: flower.powercat@hotmail.co.uk

SPOTLIGHT PEST CONTROL SERVICES LTD

British Pest Control
Association member.
General pest control including rats,
mice, moles, wasps, ants, fleas,
bird spikes and general proofing
Fast, friendly and
reliable.
Contact Dave on 07715211899.
info@spotlightpestcontrolkent.co.uk
www.spotlightpestcontrolkent.co.uk



I'm Michelle, local
branch owner for
Sales and Lettings
for The Good
Estate Agent.
We are a 13 year old
family run,
Nationwide business, with our Head
Office in Lympne.
I take pride in my high quality
customer service and my doors
don't close at 5pm!
For a Free Sales or Lettings
valuation please call 07848015443
or email
michelleferbrache@thegood.co.uk

Kingdom

CARPET CO.

- Carpets Supplied & Fitted
- Carpets Professionally Cleaned
- Carpets Whip Edged & Cotton Bound

Whatever your carpet need, give us a call for a
FREE estimate / assessment.

Over 50 years combined experience.

07943 764 442

Email: kingdom.carpet.co@gmail.com

LOCAL TRADES



CN ELECTRICAL

DOMESTIC &
RESIDENTIAL

New Sockets, Fault Finding,
Rewires, Lighting,
Consumer units and much more!
NICEIC REGISTERED ELECTRICIAN

Contact Chris
Mob : 07826 505671
www.cnelectrical.co.uk
info@cnelectrical.co.uk

DILTON MINI SKIP HIRE
Ballast, hardcore, sand,
topsoil supplied. Registered waste
carrier.
Phone 01303 812 448, or
Mobile 07799 433 754



PILATES

Join Sharon in
Tuesday mornings
at Lympne Small
Hall for a weekly
Pilates session.
Small friendly
group

Contact Sharon 07890 563023

LYMPNE VILLAGE STORES AND POST OFFICE

OPEN from 830-530 weekdays
Saturday 830-2pm
Sundays CLOSED

Visit us for your everyday needs
Milk, bread, eggs and your daily
newspaper or magazine and the
National Lottery.

LYMPNE OVER 50s LUNCH CLUB

Join our friendly social group for
a chat over a hot meal, dessert
and tea or coffee with fun activi-
ties, bingo or quizzes. Taking
place at the Harry Margary Hall
on the 2nd Friday of each month
Cost £8.50. Booking the meal is
essential at least the day before.
Contact

Margaret on 01303 269557.
Transport available, if necessary,
within Lympne Village

RICHARD AJ THOMPSON LTD
Plumbing & heating engineer
Gas Safe Registered-No 513449,
22 years experience.
Central heating boiler servicing,
repairs and installations.
All domestic plumbing repairs,
Water softeners, gas fires, cookers
and water heaters.
Landlord's Safety Certificates.
Tel 01303 266 273
Mob 07540 333 250

HANDYMAN AND BUILDING MAINTENANCE

Roofing, Guttering,
Plumbing, Drains,
Painting, Decorating,
Plastering
Free Estimates
References available

Contact 07836 665382



**Counselling, Supervision and
Mindfulness**
Supporting you with anxiety,
depression, stress
bereavement and loss,
relationships, trauma ...

In person or online
Hythe area
Contact Ellen: 07740857109
Email: ejgarrard2712@gmail.com
www.ellengarrard.co.uk



PAINTING, DECORATING & HANDYMAN

Interior and Exterior
All types
undertaken. FREE ESTIMATES.
30 YEARS EXPERIENCE
Call
Mick Cockburn
Mobile
07769 221 871

MUTTS APPRECIATED

Professional Dog Grooming Services
Based in Newingreen
Fully qualified and insured
All breeds welcome
Tel: 07927335947
Instagram: @muttsappreciated

REFUSE COLLECTION DATES SEPTEMBER 2025

**Recycling (Purple Lid/Black
Box) and Food Waste will be
collected on: Tuesday 2nd, 16th
and 30th**

**Non-Recyclables (Green Lid)
and Food Waste will be
collected on: Tuesday 9th and
23rd**

**Garden Waste Collections 2nd, 16th
and 30th**

*Please do not put the lid on the
Black Box—use the food waste
container or a heavy object.*

EX-JOB AND DOGS

Retired local police officer offering
Dog Walking, Dog Day Care
Boarding in Home Environment
Home Watch Service Long/short term
Including Cat Care
Contact Kerry
with your requirements
CONTACT 07791 095 895
exjob17@gmail.com

THE BOWEN TECHNIQUE
BOWEN THERAPY IN LYMPNE
Back pain, arthritic pain, asthma,
digestive disorders, migraine,
practically any problem can
potentially be addressed.
Lynne Rodgers, Cert ECBS.

Call 01303 268 910 or
lynnealexrogers@gmail.com