



REGISTERED CHARITY NO 1178573

**LYMPNE VILLAGE HALL  
SUMMER FAIR**

**SUNDAY  
27TH JULY  
1PM TO 5PM**

**MAGIC AL'S  
GIANT  
BALLOON  
SHOW**  
AS SEEN ON  
BRITAIN'S GOT TALENT

**DOG SHOW**  
REGISTRATION FROM 1PM  
CLASSES START 1.30PM

FREE CIRCUS SCHOOL  
LIVE MUSIC  
TRADITIONAL GAMES  
CRAFT STALLS  
FOOD & BAR  
PLUS MUCH MORE

FREE ONSITE PARKING (CT21 4LE)

REGISTERED CHARITY NO 1178573

**SUMMER FAIR RAFFLE**  
TO BE DRAWN ON SUNDAY 27<sup>TH</sup> JULY AT 4.30PM

SOME OF OUR AMAZING PRIZES INCLUDE:

- LE SHUTTLE SHORT STAY VOUCHER (CAR & PASSENGERS)
- DFDS DAY TRIP VOUCHER (CAR & 4 PASSENGERS)
- £50 VOUCHER FOR THE NAUGHTY DOG AT LYMPNE CASTLE
- 1 X WRISTBAND VOUCHER FOR ADVENTURE ISLAND, SOUTHEND
- 1 X ENTRY FOR SEALIFE ADVENTURE, SOUTHEND
- 4 X TICKETS FOR PORT LYMPNE
- FAMILY TICKET FOR LYDDEN HILL RALLYCROSS & FIREWORKS
- 1 X AQUA PARK SESSION AT ACTION WATERSPORTS
- FAMILY TICKET FOR THE LEAS CLIFF HALL 2025 PANTO
- AIRPORT LOUNGE PASS FOR 2 ADULTS
- 2 X CHILD TICKETS FOR DRUSILLAS PARK
- AIR FRYER
- PLUS MANY MORE.....

**£1.00 A TICKET**

**BUY YOUR TICKETS IN ADVANCE WITH THIS QR CODE**

**We look forward to  
welcoming everyone from  
the village to our Summer  
Fayre on Sunday  
27th July". We have over 30 stalls for you to  
browse, plus entertainment for adults and  
children, food and drink, and a raffle with some  
great prizes. Get that date in your diary, you  
wouldn't want to miss it!**

**For more information contact  
events@lympnevillagehall.co.uk**

**From the Chair of the Village Hall Committee**



What's on in

*July*

at Lympe Castle



Summer is here and the Castle is now open  
7 days a week from 12pm until 9pm

Come and join us on the Castle Terrace and enjoy a  
glass of something cold, whilst watching the sun set  
across the beautiful Romney Marshlands

Our famous Sunday Roast Lunches are being served  
on the following dates in July-  
6<sup>th</sup>, 13<sup>th</sup> and 27<sup>th</sup>  
Book now to avoid disappointment



Please note that due to private events, the Castle  
will be closed to the public on the following dates:  
19<sup>th</sup>, 20<sup>th</sup>, 25<sup>th</sup>, 31<sup>st</sup>, July



Please contact us to book on 01303 533533 or enquiries@lympnecastle.com



# BEREAVEMENT SUPPORT GROUP

JOIN OUR 6-SESSION BEREAVEMENT SUPPORT GROUP FOR THOSE WHO ARE RECENTLY BEREAVED AND LOOKING FOR A SUPPORTIVE SPACE TO SHARE THEIR GRIEF



BI-WEEKLY FROM JULY 30<sup>th</sup>  
3:30pm  
LYMPNE VILLAGE HALL  
£2 DONATION PER SESSION

FOR FURTHER INFORMATION OR TO SIGN UP CONTACT  
ANNE BEALES ON 07595 350276 OR  
cllr.anne.beales@lympneparishcouncil.gov.uk

**GRIEF IS HEAVY  
DON'T CARRY IT ALONE**

## LYMPNE VILLAGE HALL FILM CLUB

IN THE HARRY MARGARY HALL

Films will be shown every 4<sup>th</sup> Tuesday of the month (not December).

MAKE A DATE IN YOUR DIARY FOR THIS POPULAR VILLAGE EVENT. ALL PROFITS GO TO THE VILLAGE HALL FUND.



7.15 for a 7.30 start

FREE MEMBERSHIP



Entrance fee of £5.00 includes refreshments and lucky draw ticket.

Showing on 22<sup>nd</sup> July:

### **WITNESS**

Harrison Ford gives a memorable performance as a hard cop investigating an incident in a non-violent Amish community. An action-packed struggle of life, love and death.

Showing on 26<sup>th</sup> August: **CHICAGO**

Come on, Lymgne, we're gonna paint the town... and all that jazz!  
Time for a musical. Hunt out those fishnets and enjoy!



We reserve the right to show a substitute film should the need arise or to refuse admission.  
Children under 16 must be accompanied by an adult (ID will be requested).



## COULD YOU BE OUR VOLUNTEER DRIVERS COORDINATOR?

We're looking for a friendly, organised person to help us set up and manage a list of volunteer drivers who can support our residents.

Drivers are needed for short journeys—both morning and afternoon—Monday to Saturday. These trips help people get to local activities in Lymgne and to fantastic sessions in Hythe, such as those run by Age Concern.

Many in our community don't currently drive or have access to public transport. By coordinating this small team of volunteers, you'd be playing a big part in making sure no one is left out of the social life and wellbeing opportunities we're working hard to provide.

We're lucky to already have amazing volunteers improving lives across the village—now we just need someone with a bit of energy and organisation to help bring it all together.

Could that someone be you?

To find out more or express your interest, please contact Cllr Anne Beales  
cllr.anne.beales@lympneparishcouncil.gov.uk  
Or 07595 350 276

## Help Relocate the Church Bees

Lymgne church has a large honey bee colony just above one of the roof beams. Roof timbers are not designed to support large honeycomb structures so this ought to be removed. Leaving the honey comb where it is attracts new colonies each year. Many of the bees end up inside the church, unable to escape and get trapped and die. The bees have been in the roof area for many years - but the honeycomb is getting larger and ought to be removed before it causes structural issues. As this is high up, this requires an apiarist able to work at heights. We are currently raising funds for this work - to relocate the bees and remove the honey comb. If you'd like to contribute please contact one of the churchwardens, Rachel Cornish or Chris Laker or by email at  
lympgnechurch@gmail.com



**STANFORD WITH POSTLING AND LYMPNE WI**  
A DATE FOR YOUR DIARY.

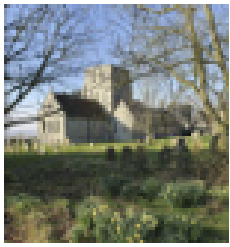
THE WI QUIZ IS ON SATURDAY 18th OCTOBER  
AT THE MAIN VILLAGE HALL  
TABLES OF 6 PLEASE AND IT IS £8 PER PERSON.  
A PLOUGHMANS IS INCLUDED.

To book a table ring IONA on 07774 096 208

We are pleased to say Lymgne has now been included in our WI name .

Lymgne WI sadly disbanded a few years ago but as we meet in Lymgne and many members live in the village we felt it right that its name be included .

So if you would like to become a member we would be pleased to welcome you.



# St Stephen's Church Services in July

Sunday 6 July 11am Holy Communion  
 Sunday 13 July 11am Family Service  
 Sunday 20 July 11am Morning Worship  
 Sunday 27 July 11am Holy Communion

**Sunday Club (ages 3-10)**  
 Meet 10-11am Lads' club Saltwood  
 Contact Christine Clover:  
 Call 0300 030 1662 or text 07379 877846  
[christineclover@lympneandsaltwoodchurches.uk](mailto:christineclover@lympneandsaltwoodchurches.uk)



**LYMPNE + SALTWOOD TODDLERS**  
 Come and join us at Lympne & Saltwood Toddlers  
 10 - 11:30am  
 Thursday mornings in the Harry Margary Hall, Aldington Road, Lympne

# Lympne Churchyard

Thanks to Suzy, Mark, Yvonne, Keith, Rachel, Chris, Laurence and other volunteers. The aim is to increase wildlife, increase numbers of flowering plants and maintain the amazing view.



We are usually working late Saturday morning, and sometimes Thursday or Friday mornings. Some of us specialise in cutting things back, others in planting or weeding. A job for everyone -

NEW VOLUNTEERS ARE ALWAYS WELCOME.



**ST STEPHEN'S CHURCH, LYMPNE**

**CREATIVE ARTS DAY**  
 WITH A NATURE THEME  
 FOR ADULTS



A FUN DAY FOR ALL ABILITIES  
**SATURDAY 12<sup>TH</sup> JULY 2025**  
 10.30am – 4.00pm

£10 including cream tea  
 Bring your own packed lunch

**ACTIVITIES AND MATERIALS PROVIDED**

**STILL LIFE; GLASS PAINTING; PRINTING; SHELL PAINTING AND MORE**

BRING YOUR OWN MATERIALS IF YOU WISH PLUS A FOLD UP CHAIR

For further information and to register please email Yvonne  
[yvonne.bowers@sky.com](mailto:yvonne.bowers@sky.com)  
*Eco Church Gold Award 2025*

**David Ian** REMOVAL SERVICE  
 FURNITURE & BEDS

**LET US MOVE YOU**  
 Providing Flexibility to make your move run smoothly for you

- Local, National & European Removals
- Home Office or Commercial
- House Clearance & Disposal Service Available
- Short Notice No Problem, Same Day Service Available
- Storage Facilities
- Full Packing Service Available
- No Job Too Small
- CALL THE EXPERTS



[www.davidianfurniture.com](http://www.davidianfurniture.com)

CALL NOW FOR A FREE QUOTE  
 01303 264052

Dymchurch Road | Hythe | Kent  
 Email: [sales@davidianfurnitureltd.com](mailto:sales@davidianfurnitureltd.com)

David Ian Furniture We are here **JEWSONS**  
 Spand David Ian  
 Easy FREE Parking  
 ← Dymchurch A259 Hythe →

Our July presentation by Peter Stastny will have taken place by the time this newsletter is in circulation. Therefore our following one is on **September 2<sup>nd</sup>** and will be presented by **John Simpson** who will be selecting **Tales of Lympe Airfield** true stories from his final book in the trilogy he has written. He hopes to have copies available on the night. **Our meetings start at 7.30pm at Lympe Church. Doors open 6.30pm. Admission £3. Refreshments available.**



32 Sassoon George Grantham Bain Collection

*This month we look at a prominent Lympe Resident famous for his many friends of stage & screen, politics, aviation and Royalty.*

**Sir Philip Sassoon - The Friend to the Stars**  
by **John Simpson**

Sir Philip Sassoon was the MP for Folkestone and Hythe from 1912 until his untimely death in 1939. Born Philip Albert Gustave David Sassoon in his mother's Paris mansion on 4<sup>th</sup> December 1888 to a wealthy Jewish trader family from Baghdad and related to the Rothschild family, he was to be destined for a life of privilege. The First World War poet Siegfried Sassoon was his cousin, but they rarely met and were not close. Philip was educated at Farnborough Prep School, Eton and Oxford and brought up to be an English gentleman. He owned three elegant homes in the south east; Trent Park in Cockfosters, 25 Park Lane in London and Port Lympe House outside the village, which he had built to his own flamboyant likes and designed by Herbert Baker starting in 1913. Built from used bricks to not look too new, the building's completion was delayed by the First World War. He also owned the nearby country houses; Bellevue, Danehurst and the French House. He was an art collector and socialite and a willing host to the rich and famous. He would go on to succeed his father as MP for Folkestone and Hythe.

His connections with Lympe Airfield were extensive officially and for leisure, often flying his esteemed guests into it to entertain them at parties or host political meetings at Port Lympe. Such people included Winston Churchill, Edward & Mrs Simpson, Anthony Eden, Charlie Chaplin, Amy Johnson, Lloyd George, Lawrence of Arabia and George Bernard Shaw to name but a few. As an Honorary Air Commodore, he was the CO of 601 Auxiliary RAF Squadron, and hosted its pilots, all wealthy volunteers and known as the Millionaires' Squadron, to sumptuous parties as part of their annual summer camp at Lympe. He became the Under Secretary of State for Air in the National Coalition Government of Lloyd George and under Conservative PM Stanley Baldwin. He owned his first aeroplane in 1919, but his attempts to gain his pilot's wings took years to achieve as he was not a natural pilot, taking twice as long as normal going solo in 1929. His Percival Gull Four G-ACGR survives today in Brussels Air Museum, which he flew in the 1933 King's Cup air race.

He was Private Secretary to Sir Douglas Haig from 1915 – 18. In 1921 Port Lympe was the venue for an Anglo French Conference attended by Lloyd George and French PM, Aristide Briand to agree the amounts the defeated Imperial Germany would pay out to the Allies following the Treaty of Versailles. This would however rumble on for years.

Others welcomed at Port Lympe included Charles Lindbergh very soon after his solo Atlantic flight in 1927, Douglas Bader to make his first flight after losing his legs in 1932, take a nine year old Alan Clark, a later Thatcherite Conservative MP, on his first flight and Clementine Churchill flying for pleasure. Noel Coward, Robert Boothby, the Great Escape 'Big X' Roger Bushell of 601 Squadron and Minister of Aircraft Production Lord Beaverbrook would also visit Lympe Airfield and Port Lympe. These were heady times indeed.

Philip Sassoon died of complications following influenza on 3<sup>rd</sup> June 1939, as the illness spread to his lungs. He left £1.980 million in his will, the equivalent to £130,658 million today. His ashes were scattered from an aircraft over Trent Park. He was known to be openly gay within his social circles and consequently never married, and was survived by his sister Sybil to whom he was close. Port Lympe House was requisitioned for the RAF during WW2 and used as the Officers' Mess, before falling into disrepair after the war. Today, of course it is part of Port Lympe Zoo Park.

**DO YOU REMEMBER SILVER CITY AIRWAYS AT LYMPNE?**  
I AM COLLECTING ANECDOTAL STORIES AND MEMORIES, HOWEVER SHORT, OF SILVER CITY AT LYMPNE AIRFIELD 1948 – 54 FOR MY NEW BOOK. PLEASE CONTACT ME IF YOU CAN HELP.

**FOR INFO -Contact: John Simpson on 07508 708725 or email: johnsimpson43@btinternet.com**



### KENT GARDENER

Summer has just about reached full swing now and we still have July and August to come. Most of the year's planting has been done, though there is still time for a second crop of quicker growing vegetables and salads. Next year's biennials sown in pots will grow quickly now the soil is warm and can be transplanted into a permanent position in the autumn. Look out for weeds and remove them before they can seed. Roses have been magnificent this year. Remove any weeds around the base of the plant. Sprinkle granules or water rose food around the cleared soil and mulch. Pick off any leaves showing black spot or yellowing. Dead head repeat flowering roses, but some people like to leave the hips on ramblers or species roses like r. Glauca or r. Rugosa for their showy hips. Annuals and perennials can also be dead headed to keep them neat and repeat flowering. Some like hardy geraniums, aquilegia and oriental poppies can be cut back hard and will give second flush of leaves, if not flowers later. Remember to feed and water. Use grey water from washing up etc wherever possible to water ornamentals but not vegetables. This is a good time to take soft cuttings from the likes of penstemon and salvias. Take a 10cm cutting from this season's nonflowering shoots, remove bottom leaves and put into potting compost. Water and cover with a clear plastic bag and place in a light warm position but not in sun. Please leave out water in a shallow dish for birds and other creatures and place a small stone in the water for insects to perch on while drinking. Happy gardening.

**Lympne Fellowship**-In June we enjoyed a fascinating talk by Charlie Davies, a retired member of the RNLI who told us about the history of the Romney Marsh lifeboats from 1826.

These were initially rowing boats! As motorised boats developed so did the lifeboats, but early ones were slow and not self-righting. As time went on a self-righting model was developed by university students until we have the ones we see today. Charlie told us that he personally had not had to deal with any fatalities, but his brother had two. One was a young girl and he put the call out to the lifeboat station to bring the lifeboat straight into the shed without hosing down and close the back door so that no inquisitive members of the public could see. They had an ambulance backed right up to the front doors so that the girl could be transferred with dignity. There was also a story of a woman running along the seafront with her dog and waving to a woman in the rough water who appeared to be in trouble. The woman then suddenly dived into the water and the dog went with her, as she headed to join her daughter. The lifeboat picked them all up and took them back to the swimming club further down the coast, whereupon the daughter jumped back in the water and swam to the beach. The mother and dog were then landed safely. Our July meeting will be **Would I Lie To You?**

### STUDYING HISTORY and ARCHAEOLOGY in LYMPNE

SHAL's only outdoor visit this year on a hot sunny day was enjoyed by a group in the gardens and religious houses of the followers of St. Francis of Assisi-Franciscans who founded many religious houses across Europe. The friars wandered and preached among the people who took vows of extreme poverty and supported themselves by working and begging for food. These Greyfriars, were called by their distinctive long belted robes. After Henry VIII's dissolution of the friary, the site in the centre of Canterbury, had a succession of private landlords including the MP William Lovelace in the 16<sup>th</sup> century who built a large house with only the large boundary wall remaining from his time. The re-creation of the large friary garden also remains with some of the areas of trees and bushes. The proposal for the layout and planting of the large garden was pollinators influenced by research into the history of the site by studying Franciscan sites in Italy with a variety of British native plants and pollinators with a wild flower meadow. Eastbridge (the hospital of St. Thomas) has functioned as an almshouse in the heart of Canterbury for over 400 years, serving as the third longest in the country under the patronage of the Archbishop and administered by Trustees who have a strong sense of community, whilst the Chantry chapel is used for saying Mass after its abolition in 1547 and reconstruction in 1969 for its original purpose. It is definitely a visit to the grounds and chantry. Our next meeting on 15<sup>th</sup> July at 7.30pm in the Harry Margary Hall welcomes Andy Ward of Kent Archaeological Society to update us about local finds which will bring us up to date.

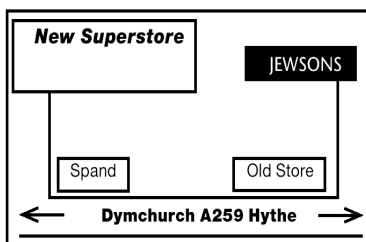
Lympne Fellowship normally meets at 1.15pm in the Harry Margary Hall on the 2<sup>nd</sup> Thursday of the month, . For further information about our group, please contact **Jill Page on 07846 819693.**



Dymchurch Road, Hythe, Kent

01303 264052

Email: sales@davidianfurnitureltd.com



**REMOVAL AND STORAGE  
CALL NOW FOR A FREE QUOTE**  
\*TERMS & CONDITIONS APPLY

**OPEN 6 DAYS A WEEK**

**Mon - Fri 9am - 5.30pm Sat 9am - 5pm**

**10%  
Discount  
for  
Lympne Residents  
at**



## LYMPNEPARISH COUNCIL

### CONTACT DETAILS

If you have any queries regarding local issues, or any other matters you wish to raise, you can contact Lymgne Parish Councillors

#### Current Members

Chair Mike Boor

Vice Chair Anne Beales

Claire Yates

Michael Potter

Judith East

Michael McAuley

Correspondence should be sent to the Parish Clerk

Jeff Lawrence

29 Honeywood Close Lymgne

Tel: 01303 883 228

e-mail: clerk@

lympneparishcouncil.gov.uk

## PLANNING MATTERS

Due to issues with space available planning applications are not published in the newsletter.

All planning matters are published with the agenda which can be found on the village notice boards or on line at

[www.lympneparishcouncil.gov.uk/meetings](http://www.lympneparishcouncil.gov.uk/meetings)



## Taize Service

Recently Lymgne Church held a contemplative service with Taize style music and candles. If you'd like to receive information on dates for these please email the wardens on

[lympnechurch@gmail.com](mailto:lympnechurch@gmail.com)



## Autumn Meditation Course BOOKING NOW

8 sessions from Saturday 4 October 2025  
(1 per week)

1.30pm—4.00pm

Location: Harry Margary Hall  
Lymgne Village

Learn some new skills to support  
your health and wellbeing

Contact Ellen for more information or to book

Call: 07740857109

Email: [ejgarrard2712@gmail.com](mailto:ejgarrard2712@gmail.com)

Visit: <https://ellengarrard.co.uk>



# squiggle

## WILLS

## TRUSTS

## POWER OF ATTORNEY

## PROBATE

Death isn't something most of us want to talk about or think about. And why would we? But what we DO want is for our loved ones to be looked after when we're gone.

And yet, nearly half of us don't have a will or even a plan for our estate when we die. It's something many just don't get round to - despite knowing that we should.

Book your free consultation with Squiggle today.

01233 659796

[www.squiggleconsult.co.uk](http://www.squiggleconsult.co.uk)

Squiggle Consult Ltd

11 Park Barn, Evegate Business Park, Mersham, TN25 6SX  
Registered Company - 10816512



## Private Home Care

Specialists in 1-to-1 home care  
of elderly and vulnerable people

- Medication
- Personal Care
- Security Checks
- Outings
- Domestic
- Wake / Sleep Nights
- Live in

Disability Cars for  
our clients  
available 24 hours  
a day



Office at 7 Great Conduit Street, Hythe

☎ 01303 847422

☎ 0756 3636 332

✉ [privatehomecarekent@gmail.com](mailto:privatehomecarekent@gmail.com)

🌐 [Privatehomecare.co.uk](http://Privatehomecare.co.uk)

# LOCAL TRADES



Studio J  
Hair Salon  
A family business  
in the heart of  
Lympne.

20% OFF FOR NEW CLIENTS  
ON 1ST VISIT.

Call us on 01303 267877,  
text 07833 031717 or find us on  
instagram @studio\_j\_hair\_lympne.



**07745 532075**

Mobile Foot Health Practitioners.  
Treating and managing foot and nail  
conditions, corns, callus, fungal,  
fingernails, diabetic foot care  
[www.eastkentfootcare.co.uk](http://www.eastkentfootcare.co.uk)

## ASHTON TREE CARE

Hedge cutting , stump grinding ,  
tree surgery  
All work fully insured  
Contact 07929 627 622  
[ashtontreecare@gmail.com](mailto:ashtontreecare@gmail.com)

## PLUMBER

City & Guilds qualified  
Affordable, Reliable and Local  
All work fully insured and  
guaranteed. Wide range of hot  
and cold water services. See  
website for further details,  
rates and customer feedback.  
Call now on 07899 034 695  
for a no-obligation, free quote  
or visit our website:  
[www.condicoplumbing.co.uk](http://www.condicoplumbing.co.uk)

## NUMERACY OR LITERACY SUPPORT

Would a young person you  
know benefit from additional  
numeracy and/or  
literacy support?  
I am a qualified and  
experienced SEN teacher  
with 20 years experience  
I have a limited number of 1:1/  
small group sessions available  
Sessions from £12.50p/h  
Contact Bea 07412 808 098

LYMPNE PARISH COUNCIL CANNOT ACCEPT RESPONSIBILITY FOR THE ACCURACY OF ANY  
OF THE DETAILS ADVERTISED. YOU ARE STRONGLY RECOMMENDED TO TAKE  
APPROPRIATE ADVICE BEFORE ENTERING INTO ANY COMMITMENT.

## LOCAL BATHROOM and KITCHEN FITTER

Reliable, professional, 20 years experience  
fitting bathrooms, tiling, plumbing and general  
building work.  
Call Andrew 07788 728 787  
for a free estimate.



## ACC ELECTRICAL

Fuse board changes,  
cctv, alarms, PAT  
testing, smoke alarms, landlord safety  
checks,  
security, lighting, rewires, smoke  
detectors and much more!  
Free Quotations and friendly  
reliable service  
01303 211 011/07595336880  
[info@accelectrical.co.uk](mailto:info@accelectrical.co.uk)

## WRAIGHT'S MOWERS

NEWINGREEN (A20)  
Servicing, Repairs, Sharpening  
Spares and Sales  
all makes of petrol & electric mowers.  
Benham Water Farm,  
Ashford Road (A20)  
Newingreen, CT214JD  
Opposite old race course  
Tel 07733293315

## TAXI IN THE VILLAGE.

Short, long or any distance.  
Airport, docks, etc.  
Ask for a quote.  
Speak to Geoff  
Phone 07703 444 814

## DN PLASTERING SERVICES

Local, Trustworthy & Reliable  
Over 25 Years Experience  
Call Darren 07932 002 442  
[dnplasteringservices@gmail.com](mailto:dnplasteringservices@gmail.com)

## CURTAINS

Handmade  
curtains, blinds and soft furnishings.  
Curtain alterations.  
Call Valery Wren  
01303 237 755

## THE EXECUTIVES SUITE

Virtual Support Service  
Remotely supporting time limited  
business owners  
with administrative tasks.  
Travel, diary management,  
inbox detox & lifestyle  
management.  
Contact Natalie Dowsett at  
[natalie@theexecutivesuite.co.uk](mailto:natalie@theexecutivesuite.co.uk)

## CATHERINE'S CLEANING

Over 4 years Cleaning Experience  
Regular Cleans  
Spring Cleans  
Serving Lympne, Hythe  
and surrounding areas.  
DBS checked, references on request.  
Call or message Catherine on:  
07957991266  
Email: [flower.powercat@hotmail.co.uk](mailto:flower.powercat@hotmail.co.uk)

## SPOTLIGHT PEST CONTROL SERVICES LTD

British Pest Control  
Association member.  
General pest control including rats,  
mice, moles, wasps, ants, fleas,  
bird spikes and general proofing  
Fast, friendly and  
reliable.  
Contact Dave on 07715211899.  
[info@spotlightpestcontrolkent.co.uk](mailto:info@spotlightpestcontrolkent.co.uk)  
[www.spotlightpestcontrolkent.co.uk](http://www.spotlightpestcontrolkent.co.uk)



I'm Michelle, local  
branch owner for  
Sales and Lettings  
for The Good  
Estate Agent.  
We are a 13 year old  
family run,  
Nationwide business, with our Head  
Office in Lympne.  
I take pride in my high quality  
customer service and my doors  
don't close at 5pm!  
For a Free Sales or Lettings  
valuation please call 07848015443  
or email  
[michelleferbrache@thegood.co.uk](mailto:michelleferbrache@thegood.co.uk)

*Kingdom*

CARPET CO.

- Carpets Supplied & Fitted
- Carpets Professionally Cleaned
- Carpets Whip Edged & Cotton Bound

Whatever your carpet need, give us a call for a  
FREE estimate / assessment.

Over 50 years combined experience.

07943 764 442

Email: [kingdom.carpet.co@gmail.com](mailto:kingdom.carpet.co@gmail.com)

## LOCAL TRADES



### CN ELECTRICAL DOMESTIC & RESIDENTIAL

New Sockets, Fault Finding,  
Rewires, Lighting,  
Consumer units and much more!  
NICEIC REGISTERED ELECTRICIAN

Contact Chris  
Mob : 07826 505671  
www.cnelectrical.co.uk  
info@cnelectrical.co.uk

**DILTON MINI SKIP HIRE**  
Ballast, hardcore, sand,  
topsoil supplied. Registered waste  
carrier.  
Phone 01303 812 448, or  
Mobile 07799 433 754



**PILATES**  
Join Sharon in  
Tuesday mornings  
at Lympne Small  
Hall for a weekly  
Pilates session.  
Small friendly  
group

Contact Sharon 07890 563023

## LYMPNE VILLAGE STORES AND POST OFFICE

OPEN from 830-530 weekdays  
Saturday 830-2pm  
Sundays CLOSED

Visit us for your everyday needs  
Milk, bread, eggs and your daily  
newspaper or magazine and the  
National Lottery.

### REFUSE COLLECTION DATES JULY 2025

Recycling (Purple Lid/Black  
Box) and Food Waste will be  
collected on: Tuesday 8th and  
22nd

Non-Recyclables (Green Lid)  
and Food Waste will be  
collected on: Tuesday 1st, 15th  
and 29th

Garden Waste Collections 8th and  
22nd

*Please do not put the lid on the  
Black Box—use the food waste  
container or a heavy object.*

**RICHARD AJ THOMPSON LTD**  
**Plumbing & heating engineer**  
Gas Safe Registered-No 513449,  
22 years experience.  
Central heating boiler servicing,  
repairs and installations.  
All domestic plumbing repairs,  
Water softeners, gas fires, cookers  
and water heaters.  
Landlord's Safety Certificates.  
Tel 01303 266 273  
Mob 07540 333 250

## HANDYMAN AND BUILDING MAINTENANCE

Roofing, Guttering,  
Plumbing, Drains,  
Painting, Decorating,  
Plastering  
Free Estimates  
References available

Contact 07836 665382



**Counselling, Supervision and  
Mindfulness**  
Supporting you with anxiety,  
depression, stress  
bereavement and loss,  
relationships, trauma ...

In person or online  
Hythe area

Contact Ellen: 07740857109  
Email: [ejgarrard2712@gmail.com](mailto:ejgarrard2712@gmail.com)  
[www.ellengarrard.co.uk](http://www.ellengarrard.co.uk)



## PAINTING, DECORATING & HANDYMAN

Interior and  
Exterior  
All types  
undertaken.  
FREE ESTIMATES.  
30 YEARS  
EXPERIENCE  
Call  
Mick Cockburn  
Mobile  
07769 221 871

**MUTTS APPRECIATED**  
Professional Dog Grooming Services  
Based in Newingreen  
Fully qualified and insured  
All breeds welcome  
Tel: 07927335947  
Instagram: @muttsappreciated

### EX-JOB AND DOGS

Retired local police officer offering  
Dog Walking, Dog Day Care  
Boarding in Home Environment  
Home Watch Service Long/short term  
Including Cat Care  
Contact Kerry  
with your requirements  
CONTACT 07791 095 895  
exjob17@gmail.com

**THE BOWEN TECHNIQUE**  
**BOWEN THERAPY IN LYMPNE**  
Back pain, arthritic pain, asthma,  
digestive disorders, migraine,  
practically any problem can  
potentially be addressed.  
Lynne Rodgers, Cert ECBS.  
Call 01303 268 910 or  
[lynnealexrodgers@gmail.com](mailto:lynnealexrodgers@gmail.com)

## LYMPNE OVER 50s LUNCH CLUB

Join our friendly social group for  
a chat over a hot meal, dessert  
and tea or coffee with fun activi-  
ties, bingo or quizzes. Taking  
place at the Harry Margary Hall  
on the 2<sup>nd</sup> Friday of each month  
Cost £8.50. Booking the meal is  
essential at least the day before.  
Contact  
Margaret on 01303 269557.  
Transport available, if necessary,  
within Lympne Village

### *ST STEPHEN'S CHURCH, LYMPNE* *COFFEE MORNING*



**SATURDAY 26 JULY 2025**  
**10.30am - 12.30pm**

- Join us for coffee, cakes and savoury bakes.  
If the sun is shining, sit out and enjoy the view.
- Take a break while out for that walk (well-  
behaved dogs welcome)
- Catch up with old friends and new

*Proceeds to maintenance of the church plus  
a donation to this month's nominated charity:*

**HYTHE DEMENTIA AWARENESS FORUM**