



LYMPNE UNITES TO HONOUR VE DAY AT THE CASTLE

Lympne came together in a moving and memorable way to mark this year's VE Day with a special commemorative event held in the stunning grounds of Lymgne Castle. The event was a true village collaboration, organised by Lymgne Castle, St Stephen's Church, Lymgne Primary School, and Lymgne Parish Council.

Under clear skies, the evening began with a breathtaking Spitfire flypast, capturing the attention—and emotions—of all present. It was a powerful tribute to those who served and sacrificed during the Second World War and a vivid reminder of the era being honoured.

The voices of Lymgne Primary School children filled the air as they performed a series of beautiful songs, their singing adding a joyful and touching atmosphere to the evening. Their contribution brought smiles and stirred hearts, reminding everyone of the importance of passing on the legacy of remembrance to the next generation.

As the sun dipped below the horizon, the Last Post was played by a bugler, prompting a solemn silence across the crowd. This poignant moment gave space for reflection, honouring the bravery and sacrifice of those who fought for peace and freedom.

The evening culminated with the lighting of the beacon—a symbol of remembrance, unity, and hope for the future. As the flames flickered into the night, the message was clear: Lymgne remembers.

The event was a shining example of what can be achieved when a community comes together. From the careful planning to the heartfelt contributions of children, clergy, residents, and organisers alike, the evening served not only as a commemoration but as a celebration of community spirit.

A sincere thank you goes out to everyone who helped make the evening so special. Your efforts ensured that the legacy of VE Day lives on, not only in memory but in the shared strength and unity of our village

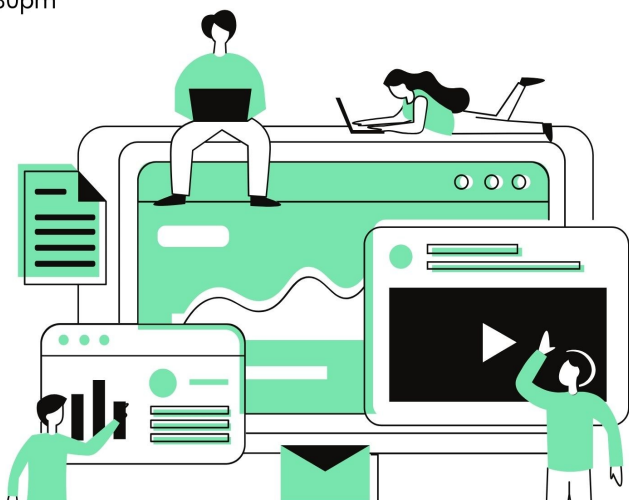


Worried about going online and telephone scams

Then why not come along to a relaxed and simple talk on "spotting and avoiding scams"

Thursday 19th June
7:30pm

Lympne Village Hall



*Castle opening times 12:00-21:00
7 days a week*

What's on in

June

at Lymgne Castle



Castle Book Club
Wednesday 18th June

6:30pm-8:30pm

Bring your latest read and sit and enjoy a drink in front of our roaring fire in the Great Hall or watch the glorious sunset on our terrace.

Free entry-socialising optional!

Art Sippers Soiree

Thursday 19th June

6:30pm-9:00pm

No artistic skills? No problem! In this 2 hour creative experience, transform from amateur artist to confident creative as our coaches guide you through creating your own masterpiece.

£45 per person

Friday 25th April
Curry and Quiz Night
Enjoy a delicious curry in a grand historic setting while testing your knowledge in a thrilling quiz.

6:30pm £15 pp
(inc. curry and quiz entry)

Please note that due to private events, the Castle will be closed to the public on the following dates:
13th, 14th and 20th June

Please contact us to book on 01303 533533 or enquiries@lympnecastle.com



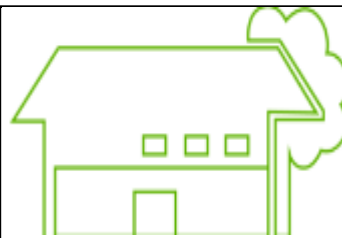
OPEN GARDEN

Five Farthings, Aldington Road, CT21 4LH
Sunday 29th June.....2pm till...4pm.
Entrance....£4..to include tea/coffee and cake.

All proceeds going to:-
Lympne Over 50's Lunch Club.

Anyone interested in joining our friendly group
Please contact Margaret...phone no.
01303 269557
email...lympnelunchclub@gmail.com

HELP US FIX THE FAULTS: Residents have reported several issues with highways, including problems with paths, roads, and street lighting. Kent County Council provides an easy way to address these concerns. To report a highway defect, visit the Kent County Council website and navigate to the 'Report a Problem' section. There, you can submit details and upload photos of the issue. This online service ensures that your concerns are quickly reviewed and addressed. For further assistance or to track the status of your report, you can also contact the council directly through their website. Your input helps keep our roads safe and well-maintained. Visit <https://www.kent.gov.uk/roads-and-travel>



LYMPNE VILLAGE HALL

We are still looking for someone to join our committee, become a trustee and fulfil the role of Secretary. This is a great opportunity to get involved in your local community and help to run one of the best resources the village has. For more information contact me: chair@lympnevillagehall.co.uk

Preparations are well underway for the Summer Fayre, with stalls selling well. We have some great raffle prizes, so be sure to get your tickets to be in with a chance of winning!

Lastly, we have just started thinking about setting up a "repair cafe", along the lines of the TV show "The Repair Shop". We have a long way to go with this, but if this is something that you would like to get involved with and help set up, let me know, email address as above. We're looking for someone who is ready for a challenge and really wants to drive this forward.

Chair- Lympne Village Hall

LYMPNE VILLAGE HALL FILM CLUB

IN THE HARRY MARGARY HALL

Films will be shown every 4th Tuesday of the month (not December).

MAKE A DATE IN YOUR DIARY FOR THIS POPULAR VILLAGE EVENT. ALL PROFITS GO TO THE VILLAGE HALL FUND.



7.15 for a 7.30 start



FREE MEMBERSHIP

Entrance fee of £5.00 includes refreshments and lucky draw ticket.

Showing on 24th June:

The Light Between Oceans

Set around a lighthouse off the coast of Western Australia, this is a heart-rending story of the power of love and how far people will go to defend it. A moral dilemma which will tug at the heartstrings.

Showing on 22nd July: Witness – Harrison Ford gives a memorable performance as a detective investigating an incident in an Amish community. An action-packed struggle of life and death.



We reserve the right to show a substitute film should the need arise or to refuse admission. Children under 16 must be accompanied by an adult (ID will be requested).

EVER WONDERED WHAT GOES ON AT LYMPNE VILLAGE HALL TRY SOMETHING NEW

All activities occur weekly unless stated. If you are interested in any of the activities please contact the hall direct at chair@lympnevillagehall.co.uk

Brownies and guides

East Kent Karate Club

Fun For All

Hythe Bridge Club

Lympne Youth Club

Lympne Fellowship Group (monthly)

Lympne Lunch Club (Monthly)

Lympne Short Mat Bowls

(Twice weekly winter only)

Badgers Play Group (Daily)

Studying History and Archaeology in Lympne

Pilates

Shepway Swing Band

Stanford with Postling WI (Monthly)

Yoga Club

Film Club (Monthly)

P3 Dance Academy

Lympne and Saltwood Toddlers



St Stephen's Church

Services JUNE

1st	Parish Communion	11am
8th	Family service	11am
15th	Parish Communion	11am
22nd	Parish Communion	11am

Sunday Club (ages 3-10)

Meet 10-11am Lads' club Saltwood

Contact Christine Clover:

Call 0300 030 1662 or text 07379 877846

christineclover@lympneandsaltwoodchurches.uk



1st Sunday of the Month, 9.45am, Lads' Club

BUBBLE CHURCH



Come and join us at Lympne & Saltwood Toddlers

10 - 11:30am

Thursday mornings in the Harry Margary Hall, Aldington Road, Lympne

Date for Diaries

Creative Arts Day

Saturday

July 12th

10:30am – 4pm

Lympne Church



SELLINDGE BOWLS CLUB SWAN LANE, SELLINDGE
COME AND JOIN US IF YOU ENJOY THE OUTDOORS

We're a small, friendly club with a season from April to late September. We meet for roll-ups on Tuesday afternoons and Friday evenings, but members can use the green anytime during the week.

Coaching is available on the four Sundays in May from 10am to noon. We can lend you bowls—just bring smooth-soled sports shoes.

We also play in league and friendly matches, and some members compete in county events.

As part of the Sellindge Sport and Social Club, we join in the Annual Fun Day—this year on Saturday, 24th May. Come try bowling and meet some members and coaches.

FOR MORE INFO CALL 01233 721373

ST STEPHEN'S CHURCH, LYMPNE 'MID-SUMMER' COFFEE MORNING



SATURDAY 21 JUNE 2025
10.30am - 12.30pm

Join us for coffee, cake & savoury bakes
Take a break from that walk (Well-behaved dogs welcome)
Catch up with old friends and new

Proceeds to maintenance of the church
plus
a donation to this month's
nominated charity:

GUIDE DOGS
FOLKESTONE & HYTHE DISTRICT

David Ian

REMOVAL SERVICE
FURNITURE & BEDS

LET US MOVE YOU

Providing Flexibility to make your move run smoothly for you

- Local, National & European Removals
- Home Office or Commercial
- House Clearance & Disposal Service Available
- Short Notice No Problem, Same Day Service Available
- Storage Facilities
- Full Packing Service Available
- No Job Too Small
- CALL THE EXPERTS

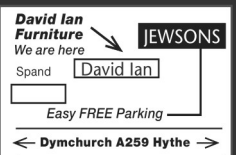


www.davidianfurniture.com

CALL NOW FOR A FREE QUOTE
01303 264052

Dymchurch Road | Hythe | Kent

Email: sales@davidianfurnitureltd.com



a presentation on **Developments in Unmanned Aviation**. Our meetings start at 7.30pm at Lympne Church. Doors open 6.30pm. Admission £3. Refreshments Available.

This month we look at a flight to Cape Town made from Lympne by 19 year old London Debutante Peggy Salaman in 1931.

With Good Hope to Cape Town - The Debutante and the Lion Cubs

by John Simpson



On the 30th October 1931 Peggy Salaman a 19 year old London debutante and daughter of a wealthy London businessman, the late Elkin Salaman, took off from Lympne with Gordon Store as navigator for Cape Town. Her De Havilland Puss Moth G-ABEH, named *Good Hope* had been fitted with extra fuel tanks and navigation lights to fly at night. The aeroplane had been bought for her as a birthday present by her mother Mrs Elkin Salaman, who insisted she did not make the flight alone.

Gordon Store, an instructor from the *London Aeroplane Club* based at Stag Lane* was to do all the navigation and act as back up pilot, whilst Peggy would do the main work of the pilot. They were to get about twenty hours sleep in the whole time. The route

included Marseilles, Rome, Athens, Cairo in Europe and El Sollum, Wadi Halfa, Entebbe and Abercorn in mainland Africa. Their most frightening moment was missing an aerodrome en route and having to spend the night in dangerous open country. Gordon Store had to use a machete to clear scrub to create a runway, whilst Peggy brought down trees with her revolver.

The record was held by Glen Kidston, but this would be bettered by a day as the *Good Hope* made the 7050 mile journey in 5 days, 6 hours and 40 minutes as they landed at 5.40am on 5th November. The flight was made more famous by two lion cubs being taken on board at Juba in Southern Sudan and taken on to Maitland Airport, Cape Town. The lion cubs reportedly 'sturdy and a picture of health' were named *Juba* and *Joker* and would accompany Peggy back to the UK by ship, and became an attraction at *Bertram Mills Circus* after being seen at the *Christmas Circus* at Olympia.

On her return to the UK Peggy was centre of attention at a celebration dinner at the *Dorchester*. She would go on to meet Amelia Earhart in March 1932, the same month her record to Cape Town was beaten by Jim Mollison who took the time below five days. With the instant fame that came her way in the 1930's, a bronze bust of her was sculpted by Frank Owen Dobson later to be head of the *Royal College of Art*.

Peggy Salaman was born on the 20th September 1912 and died in 1990 aged 79 in the USA where she had settled with her second husband Walter Bell in Arizona.

The Puss Moth was later written off on 15th August 1948 in a landing accident at Thrupton in the hands of its then owner Frank Royce, having survived throughout the war in RAF service.

* Opened by Sir Philip Sassoon in 1925

DO YOU REMEMBER SILVER CITY AIRWAYS AT LYMPNE?

I AM COLLECTING ANECDOTAL STORIES AND MEMORIES, HOWEVER SHORT, OF SILVER CITY AT LYMPNE AIRFIELD 1948 - 54 FOR MY NEW BOOK. PLEASE CONTACT ME IF YOU CAN HELP.

Contact: John Simpson on 07508 708725 or email: johnsimpson43@btinternet.com

STUDYING HISTORY and ARCHAEOLOGY in LYMPNE

SHAL's meeting in May incorporated the AGM which recognised the steps which we had made during the past 12 months in increased membership, attendances at meetings, and extension of our excavation with notable finds. Following the AGM our speaker Vince Williams traced the history of the Bobby's store in Folkestone which later became Debenhams up to its closure in 2019. Bobby's was originally CJ Saunders and bought by Mr. Bobby in 1914 as he recognised he could expand into Sandgate Road as there was a restriction on sales of drapery. In 1920 he developed a new store which he handed to his son to run and which was opened in 1931 to sell new stock. In 1931 after the General Election Martin Waters sold their business to add to Bobby's. A further development in 1937 was a restaurant which was allowed to play music. However through World War 2 people were not buying but after in the 50s and 60s a new staircase and were restaurant built and the Queen and Duke of Edinburgh visited the store. At that time Bobby's was at its peak and Sandgate Road became a one-way system with taxis outside in a queue to pick up customers. Bobby's then became Debenhams in the early 70s who developed a further refurbishment accompanied by a new restaurant in a pedestrianised Sandgate Road.

However there is no doubt that Bobby's remained as a well known department store highly regarded by its loyal customers and residents of Folkestone over 60 years. There is no SHAL meeting in June but a visit to the Franciscan Gardens in Canterbury on 20 th.

WELLBEING PARTNERSHIP

NEWS—Firstly, we would like to sincerely thank all those who volunteered – and trained – to become facilitators of the Grief and Loss Group. Your commitment is invaluable. Our thanks also extend to everyone who contributed to the production of the following resources:

Developing Wellbeing Through Partnerships Report We are pleased to announce the completion of our report, Developing Wellbeing Through Partnerships. We encourage everyone to read it at www.lympneparishcouncil.gov.uk

Guide to Activities in Lympne We supported the publication of the Guide to Activities in Lympne, which highlights events and opportunities both in and around the village halls, the church, and other venues. Special thanks go to the Village Hall Committee for their hard work in producing this guide.

Partnership Presentation A PowerPoint presentation has also been created to showcase our work to potential partners, funders, and the Parish Council.

What's Next?

Our next major project will be setting up a **Women's Health Group** – keep an eye out for adverts and announcements!

We will also be setting our priorities for the coming months at future Partnership meetings. Finally, we will soon be recruiting volunteers again!

If you are interested in getting involved, please contact: Cllr Anne Beales e.beales@lympneparishcouncil.gov.uk
☎ 07595 350 276

All documents and information can be found using the QUICK LINKS at www.lympneparishcouncil.gov.uk

Lympne Fellowship-16 members met at the Walnut Tree, Aldington for our Annual Lunch in May. Although the weather was decidedly chilly with that North Easterly wind, we had a thoroughly enjoyable time. The food was good, the service friendly, calm and efficient, and the whole atmosphere convivial. Our grateful thanks go to all the staff, and especially to Pam Clark for organising this event for us.

Lympne Fellowship normally meets at 1.15pm in the Harry Margary Hall on the 2nd Thursday of the month, with a programme of interesting and informative talks and activities. For further information about our group, please contact **Jill Page on 07846 819693**.



KENT GARDENER

Summer is upon us meteorologically speaking but the weather is frustrating at times. This spring has been especially dry, good because the grass grows more slowly, slugs and snails hide away and when it is sunny flowers open with lovely colour and scents attract pollinating insects and bees. It is not so good for farmers who depend on rain for good crops and gardeners who must keep on watering their young plants and pots. Pale or discoloured leaves may mean the plant is short of nutrients. Feed with liquid seaweed as instructed on the container. Use cooled water from washing or cooking vegetables to water the garden but not any containing detergents. When planting in dry conditions, water well into the planting hole, allow to drain, gently spread the plant's roots, place in the hole, back fill, firm down and water again to settle soil around the roots. Mulch also helps to keep in moisture. Dead head flowering plants to keep them fresh and blooming and cut back hard early perennials to encourage a new flush of leaves and flowers. Afterwards water and feed to boost growth. Cordon tomatoes need support and the side shoots sprouting from the leaf joints nipping out. Leave the sideshoots on bush tomatoes to develop naturally and start to feed both sorts when the fruit start to appear. Runner beans and other tender plants can go out now that frosts are unlikely but have some fleece handy if a cold night is forecast. Watch out for baby birds hiding in the borders or under bushes waiting for a parent to feed them. Happy gardening



As an important part of our community the head teacher at lympne school Melenie Nash invites you to take a look at the school newsletter at the following web address

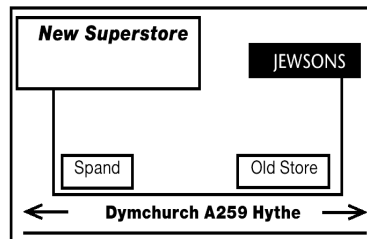
The link to weekly newsletters is <https://www.lympne.kent.sch.uk/News/Newsletters-31082018152119/>

David Ian
FURNITURE & BEDS
SUPERSTORE

Dymchurch Road, Hythe, Kent

01303 264052

Email: sales@davidianfurnitureltd.com



**REMOVAL AND STORAGE
CALL NOW FOR A FREE QUOTE**
*TERMS & CONDITIONS APPLY

OPEN 6 DAYS A WEEK

Mon - Fri 9am - 5.30pm Sat 9am - 5pm

**10%
Discount
for
Lympne Residents
at**

David Ian
FURNITURE & BEDS
SUPERSTORE

LYMPNEPARISH COUNCIL

CONTACT DETAILS

If you have any queries regarding local issues, or any other matters you wish to raise, you can contact Lympne Parish Councillors

Current Members

Chair Mike Boor
Vice Chair Anne Beales
Claire Yates
Michael Potter
Judith East
Michael McAuley

Correspondence should be sent to the Parish Clerk

Jeff Lawrence

29 Honeywood Close Lympne

Tel: 01303 883 228

e-mail: clerk@

lympneparishcouncil.gov.uk

PLANNING MATTERS

Due to issues with space available planning applications are not published in the newsletter.

All planning matters are published with the agenda which can be found on the village notice boards or on line at

www.lympneparishcouncil.gov.uk/meetings



Parish

Council

WORRIED ABOUT ONLINE/TELEPHONE SCAMS? NOT SURE HOW TO STAY SAFE ONLINE?

Not quite sure how to tell a scam from something real?

Then why not come along to a relaxed and simple talk on "Spotting and Avoiding Scams" on Thursday 19th June at 7:30pm in the Village Hall.

This useful and practical, interactive presentation and Q&A will mark the launch of the Lympne Wellbeing Partnership's new monthly Digital Champion drop-in sessions – open to everyone, no tech knowledge needed!

These monthly drop-ins are here to help you:

- * Feel more confident using your phone, tablet or computer safely
- * Get help with online forms and services
- * Ask questions and get answers in plain English & make sense of the tech jargon!
- * Not be excluded from day-to-day services where "Online" is slowly becoming the only option.

Whether we like it or not, more and more of life is happening online – from booking appointments, shopping for groceries, or just being able to keep in touch with family! So come along, and get the support and confidence you need to stay connected (and safe) online.



squiggle

WILLS

TRUSTS

POWER OF ATTORNEY

PROBATE

Death isn't something most of us want to talk about or think about. And why would we? But what we DO want is for our loved ones to be looked after when we're gone.

And yet, nearly half of us don't have a will or even a plan for our estate when we die. It's something many just don't get round to – despite knowing that we should.

Book your free consultation with Squiggle today.

01233 659796

www.squiggleconsult.co.uk

Squiggle Consult Ltd

11 Park Barn, Evegate Business Park, Mersham, TN25 6SX
Registered Company - 10816512



Private HomeCare
Specialists in 1-to-1 home care
of elderly and vulnerable people

- Medication
- Personal Care
- Security Checks
- Outings
- Domestic
- Wake / Sleep Nights
- Live in

Disability Cars for
our clients
available 24 hours
a day



Office at 7 Great Conduit Street, Hythe

☎ **01303 847422**

☎ **0756 3636 332**

✉ privatehomecarekent@gmail.com

🌐 Privatehomecare.co.uk

LOCAL TRADES



Studio J
Hair Salon
A family business
in the heart of
Lympne.

20% OFF FOR NEW CLIENTS
ON 1ST VISIT.

Call us on 01303 267877,
text 07833 031717 or find us on
instagram @studio_j_hair_lympne.



07745 532075

Mobile Foot Health Practitioners.
Treating and managing foot and nail
conditions, corns, callus, fungal,
fingernails, diabetic foot care
www.eastkentfootcare.co.uk

ASHTON TREE CARE

Hedge cutting , stump grinding ,
tree surgery
All work fully insured
Contact 07929 627 622
ashtontreecare@gmail.com

PLUMBER

City & Guilds qualified
Affordable, Reliable and Local
All work fully insured and
guaranteed. Wide range of hot
and cold water services. See
website for further details,
rates and customer feedback.
Call now on 07899 034 695
for a no-obligation, free quote
or visit our website:
www.condicoplumbing.co.uk

NUMERACY OR LITERACY SUPPORT

Would a young person you
know benefit from additional
numeracy and/or
literacy support?
I am a qualified and
experienced SEN teacher
with 20 years experience
I have a limited number of 1:1/
small group sessions available
Sessions from £12.50p/h
Contact Bea 07412 808 098

LYMPNE PARISH COUNCIL CANNOT ACCEPT RESPONSIBILITY FOR THE ACCURACY OF ANY
OF THE DETAILS ADVERTISED. YOU ARE STRONGLY RECOMMENDED TO TAKE
APPROPRIATE ADVICE BEFORE ENTERING INTO ANY COMMITMENT.

LOCAL BATHROOM and KITCHEN FITTER

Reliable, professional, 20 years experience
fitting bathrooms, tiling, plumbing and general
building work.
Call Andrew 07788 728 787
for a free estimate.



ACC ELECTRICAL

Fuse board changes,
cctv, alarms, PAT
testing, smoke alarms, landlord safety
checks,
security, lighting, rewires, smoke
detectors and much more!
Free Quotations and friendly
reliable service
01303 211 011/07595336880
info@accelectrical.co.uk

WRAIGHT'S MOWERS

NEWINGREEN (A20)
Servicing, Repairs, Sharpening
Spares and Sales
all makes of petrol & electric mowers.
Benham Water Farm,
Ashford Road (A20)
Newingreen, CT214JD
Opposite old race course
Tel 07733293315

TAXI IN THE VILLAGE.

Short, long or any distance.
Airport, docks, etc.
Ask for a quote.
Speak to Geoff
Phone 07703 444 814

DN PLASTERING SERVICES

Local, Trustworthy & Reliable
Over 25 Years Experience
Call Darren 07932 002 442
dnplasteringservices@gmail.com

CURTAINS

Handmade
curtains, blinds and soft furnishings.
Curtain alterations.
Call Valery Wren
01303 237 755

THE EXECUTIVES SUITE

Virtual Support Service
Remotely supporting time limited
business owners
with administrative tasks.
Travel, diary management,
inbox detox & lifestyle
management.
Contact Natalie Dowsett at
natalie@theexecutivesuite.co.uk

CATHERINE'S CLEANING

Over 4 years Cleaning Experience
Regular Cleans
Spring Cleans
Serving Lympne, Hythe
and surrounding areas.
DBS checked, references on request.
Call or message Catherine on:
07957991266
Email: flower.powercat@hotmail.co.uk

SPOTLIGHT PEST CONTROL SERVICES LTD

British Pest Control
Association member.
General pest control including rats,
mice, moles, wasps, ants, fleas,
bird spikes and general proofing
Fast, friendly and
reliable.
Contact Dave on 07715211899.
info@spotlightpestcontrolkent.co.uk
www.spotlightpestcontrolkent.co.uk



I'm Michelle, local
branch owner for
Sales and Lettings
for The Good
Estate Agent.
We are a 13 year old
family run,
Nationwide business, with our Head
Office in Lympne.
I take pride in my high quality
customer service and my doors
don't close at 5pm!
For a Free Sales or Lettings
valuation please call 07848015443
or email
michelleferbrache@thegood.co.uk

Kingdom

CARPET CO.

- Carpets Supplied & Fitted
- Carpets Professionally Cleaned
- Carpets Whip Edged & Cotton Bound

Whatever your carpet need, give us a call for a
FREE estimate / assessment.

Over 50 years combined experience.

07943 764 442

Email: kingdom.carpet.co@gmail.com

LOCAL TRADES



CN ELECTRICAL

DOMESTIC &
RESIDENTIAL

New Sockets, Fault Finding,
Rewires, Lighting,
Consumer units and much more!
NICEIC REGISTERED ELECTRICIAN

Contact Chris
Mob : 07826 505671
www.cnelectrical.co.uk
info@cnelectrical.co.uk

DILTON MINI SKIP HIRE

Ballast, hardcore, sand,
topsoil supplied. Registered waste
carrier.

Phone 01303 812 448, or
Mobile 07799 433 754



PILATES

Join Sharon in
Tuesday mornings
at Lympne Small
Hall for a weekly
Pilates session.
Small friendly
group

Contact Sharon 07890 563023

LYMPNE VILLAGE STORES AND POST OFFICE

OPEN from 830-530 weekdays
Saturday 830-2pm
Sundays CLOSED

Visit us for your everyday needs
Milk, bread, eggs and your daily
newspaper or magazine and the
National Lottery.

REFUSE COLLECTION DATES

JUNE 2025

Recycling (Purple Lid/Black
Box) and Food Waste will be
collected on: Tuesday 10th and
24th

Non-Recyclables (Green Lid)
and Food Waste will be
collected on: Tuesday 3rd and
17th

Garden Waste Collections 10th and
24th

*Please do not put the lid on the
Black Box—use the food waste
container or a heavy object.*

RICHARD AJ THOMPSON LTD
Plumbing & heating engineer
Gas Safe Registered-No 513449,
22 years experience.
Central heating boiler servicing,
repairs and installations.
All domestic plumbing repairs,
Water softeners, gas fires, cookers
and water heaters.
Landlord's Safety Certificates.
Tel 01303 266 273
Mob 07540 333 250

HANDYMAN AND BUILDING MAINTENANCE

Roofing, Guttering,
Plumbing, Drains,
Painting, Decorating,
Plastering
Free Estimates
References available

Contact 07836 665382

PAINTING, DECORATING & HANDYMAN

Interior and Exterior – All types
undertaken. FREE ESTIMATES.
30 YEARS EXPERIENCE
Call Mick Cockburn
Mobile 07769 221 871

MUTTS APPRECIATED
Professional Dog Grooming Services
Based in Newingreen
Fully qualified and insured
All breeds welcome
Tel: 07927335947
Instagram: @muttsappreciated

EX-JOB AND DOGS

Retired local police officer offering
Dog Walking, Dog Day Care
Boarding in Home Environment
Home Watch Service Long/short term
Including Cat Care
Contact Kerry
with your requirements
CONTACT 07791 095 895
exjob17@gmail.com

THE BOWEN TECHNIQUE
BOWEN THERAPY IN LYMPNE
Back pain, arthritic pain, asthma,
digestive disorders, migraine,
practically any problem can
potentially be addressed.
Lynne Rodgers, Cert ECBS.
Call 01303 268 910 or
lynnealexrodgers@gmail.com

LYMPNE OVER 50s LUNCH CLUB

Join our friendly social group for
a chat over a hot meal, dessert
and tea or coffee with fun activi-
ties, bingo or quizzes. Taking
place at the Harry Margary Hall
on the 2nd Friday of each month
Cost £8.50. Booking the meal is
essential at least the day before.

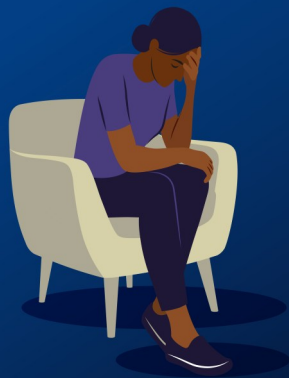
Contact
Margaret on 01303 269557.
Transport available, if necessary,
within Lympne Village



Help us
help you



Need urgent help for your mental health?



Call 111 and select the
mental health option

 **Ellen Garrard**
counselling, supervision, mindfulness

**Counselling, Supervision and
Mindfulness**
Supporting you with anxiety,
depression, stress
bereavement and loss,
relationships, trauma ...

In person or online
Hythe area

Contact Ellen: 07740857109
Email: eigarrard2712@gmail.com
www.ellengarrard.co.uk

