

**LYMPNE
NEWSLETTER
SEPTEMBER 2024**



DELIVERED TO
HOMES IN LYMPNE,
NEWINGREEN
COURT-AT-STREET
AND
WEST HYTHE ROAD

IN THIS MONTHS ISSUE
WALKING FOR MENTAL HEALTH,
SHED SECURITY,
VOLUNTEERING OPPORTUNITIES
AND MUCH MORE

**Child Finds Air Gun Pellet in Local Garden:
A Reminder for Safe Air Weapon Use**

A local family in Lymgne was surprised when their child discovered an air gun pellet in their private garden. While no one has been seen using an air weapon nearby, the presence of the pellet has raised some important points about safety and responsibility.

It's worth noting that under UK law, it's illegal to fire an air weapon in a way that allows pellets to leave your property and enter someone else's. This is for everyone's safety, and incidents like this one serve as a reminder to be extra careful.

For those who own or use air weapons, it's important to always ensure you're operating them within the boundaries of your own property and in a safe manner. A stray pellet might seem harmless, but it could lead to unintended consequences or worries for your neighbours.

If you use an air weapon, please be mindful of your surroundings and make sure you're following the legal guidelines. It's about keeping our community safe and ensuring that everyone can enjoy their gardens without any concerns.

If you notice anything unusual or have concerns about the use of air weapons in your area, it's a good idea to contact local authorities for advice or assistance. Working together, we can keep our neighbourhood safe and peaceful for everyone.



**Guide
Dogs**

**MURDER
MYSTERY
EVENING**
Lymgne Village
Hall

Hosted by Hythe & District Group of Guide Dogs
Saturday 7th September 2024 at 7.30pm
Ticket £10.00pp (Bring your own food and Drink)
Teams/Tables of 4 -6 people
To book or for further information, please
contact Anne Chapman Mobile 07791324596 or
email guidedogshytheanddistrict@gmail.com
Look forward to seeing you there!



**A DATE FOR YOUR DIARY
QUIZZ NIGHT**

STANFORD WITH POSTLING WI
ARE HOLDING ANOTHER
POPULAR QUIZ NIGHT ON

SAT: 19th OCTOBER STARTING AT 7 PM .

ENTRANCE IS £7.50 PER PERSON AND THIS
INCLUDES A PLOUGHMANS SUPPER.
IT WILL BE HELD IN THE LYMPNE VILLAGE HALL
AND TABLES OF 6 PEOPLE ARE WELCOME TO

**ST STEPHEN'S CHURCH, LYMPNE
WELCOME IN THE HARVEST**



**HARVEST SUPPER
& FUN QUIZ
SATURDAY
28 SEPTEMBER 2024
7.00pm
Lymgne Village Hall**

Tickets £15

*To include Ploughman's, Dessert, Tea & Coffee
(Bring a plate, bowl, cutlery, glass and your
preferred drink)*

Tickets available from Fiona Jarvest
email fionajarvest22@gmail.com or
Tel: 07919 146158

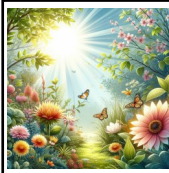


Our Summer Fayre/Fun Day was a great success! The weather was perfect, which helped ensure a healthy number of visitors. After all expenses we were able to give £1266.74 to the playing fields redevelopment funds.

I'd like to thank everyone who came for supporting the event, all the stallholders who booked a pitch, the entertainers and the volunteers on the day. We couldn't do it without you.

During the last couple of weeks, you may have noticed work going on. We have been redecorating the main hall as part of our planned maintenance. We'd like to thank our regular hirers for their understanding whilst this work has been carried out. We have plans for the coming year to redecorate the Harry Margary Hall and install much needed sound deadening acoustic tiles. These ongoing works ensure we keep the halls in good condition for the future.

Chair- Village Hall Committee



KENT GARDENER- September is usually a lovely month letting us believe summer will be with us for a while yet despite the earlier arrival of dusk. Weather patterns are changing rapidly and autumns have generally been milder of late but the weather can always spring a surprise. If any house plants have been outside for summer watch out for colder nights and bring them inside towards the end of the month and check that they are free from pests. Likewise tender plants may need protection. Don't be too neat when tidying up, birds love the seed heads and the remaining foliage provides shelter for insects, also food for birds. Harvesting will be full swing in the vegetable garden but if there is space winter crops can be sown. Pigeons can be a nuisance. If netting is used anywhere in the garden ensure it is kept taught so birds and animals can't get entangled. Green house cucumbers, tomatoes and peppers still need food and water to continue cropping as long as possible. Outside containers may not get enough water if they have lots of big leaves or are in a rain shadow. Tidy up around and in the pond and remove spent vegetation to avoid it decomposing. Now is the time to add more spring flowering bulbs to the borders and consider sowing hardy annuals like nigella, marigolds and cornflowers for a colourful display in the spring, friendly for wildlife. Plant prepared hyacinths for a Christmas display and keep in the dark until the shoots are 5cm then move to a bright cool place. Happy gardening.



WE'RE BACK!!!

Yes, our regular Guide meetings restart on Friday September 13th at 6.30 pm. At the Lympne Village Hall.

All girls between the ages of 10 and 15 years, are welcome to come along and enjoy games, challenges and outdoor fun. If you haven't been before that's great and we'd love to see you, or if you've been a Rainbow or Brownie welcome back to the Guiding family. Contact Rosemary Stutchbury on 07854863560 or Jess Cole on 07796959681 for more information or just come along on September 13th.



LYMPNE TABLE TENNIS CLUB

Lympne has a long standing table tennis club which meets every Wednesday afternoon between 2.30 and 4.30pm. We are a mature group who play competitive games, but do not participate in leagues. It is a friendly and social group. New members are welcome along to see if our club suits your needs. Serious play; friendly outcomes. Come along and see at Lympne village hall. Or further information is available from Paul on 07840 759549.

LYMPNE VILLAGE HALL FILM CLUB

IN THE HARRY MARGARY HALL

Films will be shown every 4th Tuesday of the month (not December).

MAKE A DATE IN YOUR DIARY FOR THIS POPULAR VILLAGE EVENT. ALL PROFITS GO TO THE VILLAGE HALL FUND.



7.15 for a 7.30 start



FREE MEMBERSHIP

Entrance fee of £5.00 includes refreshments and lucky draw ticket.

Showing on: 24th September

Goodnight Mister Tom

Enjoy John Thaw's brilliant performance in this classic film, set in rural Norfolk during World War Two. Tom has to take in deprived evacuee William and they both have a lot to learn.

Showing on 22nd October: **THE STING**

Redford and Newman in a clever yarn of revenge over a ruthless crime lord. Twists and turns to the music of Scott Joplin.



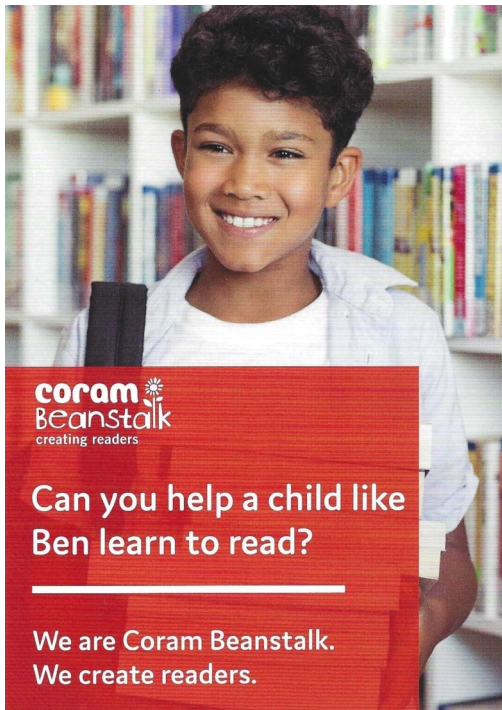
We reserve the right to show a substitute film should the need arise or to refuse admission. Children under 16 must be accompanied by an adult (ID will be requested).



Saturday September 14th 2024

Walking or cycling between our lovely Kent Churches choose amongst hundreds, maybe discover St Rumwolds, Bonnington, St Augustines, Snave or St Dunstons, Snargate. All of them are open and many are giving out refreshments. It's a great day for all the family. If you start with us in Lympne and agree to be sponsored half the money goes to the Friends of Kent Churches and half to our own Church. Lists of Churches and sponsorship forms are available either on line or from Rosemary Stutchbury. Tel 07854863560 or rosemary@stutchbury.myzen.co.uk.

DON'T FLY TIP IN LYMPNE- Thanks go yet again to our Litter Volunteer Derek Cowell who's tenacity in following up a recent fly tip in Lympne with enforcement teams at the District Council has resulted in prosecution. The householder, who was fined, had not confirmed the waste company they used was licenced which resulted in the discarded household rubbish being dumped in Lympne.



We are looking for volunteers!

- Can you spare a few hours a week to help a local primary school inspire children to become readers?
- By giving a few hours a week, in a local primary school, you could make a real difference to how well children do at school, and in life.
- We'll train you to set children up to succeed ... sharing, talking and having fun with books to help them understand the joy of reading.

Make a difference to a child's life, and to yours.

"I love my sessions and feel like I am having an impact on the children's love of reading and their self-esteem."

Registered Charity No. 296454
(England and Wales)

98%

WOULD RECOMMEND US TO A FRIEND

Find us online
corambeanstalk.org.uk
or call 020 7729 4087

coram beanstalk
creating readers

Can you help a child like Ben learn to read?

We are Coram Beanstalk.
We create readers.

VOLUNTEER GARDENERS NEEDED

We need a Team of Volunteers, can you spare your time to help get our gardens at Hft, Lympne Place back to their former glory? No set days/hrs – ideally during the week. If interested please contact Emma Tucker on 07826 890945 or



BOOST YOUR MENTAL HEALTH WITH A WALK IN LYMPNE VILLAGE

Walking is one of the simplest and most effective ways to support mental health, offering physical exercise, fresh air, and a chance to connect with nature. Studies show that walking can reduce anxiety and depression, boost mood, and improve mental clarity. In Lympne Village, you're surrounded by scenic routes that make walking both enjoyable and beneficial.

Explore Lympne's Scenic Routes

The Royal Military Canal Path is perfect for a peaceful walk, offering stunning water views and opportunities to spot wildlife. For a mix of history and nature, take the path from Lympne Castle to Port Lympne Reserve, where you can enjoy panoramic views of Romney Marsh. If you're up for a challenge, the North Downs Way provides a more strenuous hike with rewarding views from the ridge. The Lympne Loop offers a circular walk through the village and surrounding countryside, ideal for a leisurely stroll. Just beyond the village, the Romney Marsh offers expansive, open landscapes perfect for longer walks, rich in wildlife and refreshing for the mind.

A Community Walking Together

Walking is also a great way to connect with others, providing social interaction and the opportunity to enjoy the countryside in good company. Perhaps you walk with others and would like to invite others to join you – why not advertise this in our newsletter to connect and encourage others to take part.

Whether to reduce stress, find peace, or simply get moving, Lympne's footpaths offer the perfect setting. Lace up your shoes and step into nature for better mental health.

David Ian REMOVAL SERVICE
FURNITURE & BEDS

LET US MOVE YOU

Providing Flexibility to make your move run smoothly for you

- Local, National & European Removals
- Home Office or Commercial
- House Clearance & Disposal Service Available
- Short Notice No Problem, Same Day Service Available
- Storage Facilities
- Full Packing Service Available
- No Job Too Small
- CALL THE EXPERTS



www.davidianfurniture.com

CALL NOW FOR A FREE QUOTE
01303 264052

Dymchurch Road | Hythe | Kent
Email: sales@davidianfurnitureltd.com



September, **John Simpson** will take us through the **First and Second World War** chapters of his new book, *Tales of Lympe Airfield Volume 2*. The date remains **Tuesday September 3rd**. Peter's presentation will be rescheduled for a later date. Our meetings start time is 7.30pm at Lympe Church. Admission £3 on the door.

This month we look at the famous actors to have been seen at Lympe Airfield over the years.

The Famous Actors Connected with Lympe Airfield By John Simpson

Many famous names are associated with Lympe Airfield whether serving there in the forces, travelling on post war airline flights abroad, visiting Sir Philip Sassoon at Port Lympe, or learning to fly or other pursuits. One group of such famous people were actors, nationally or internationally famous. One of these was David Tomlinson who learned to fly with the *Cinque Ports Flying Club* before the war at aged 19. He was tutored by resident instructor David Llewellyn in an Avro Tutor biplane, and would go on to be an RAF pilot in WW2. In 1950 he starred in the WW2 prison camp escape film *The Wooden Horse* in which he played 'Phil' in this Stalag Luft III vaulting horse escape of 1943. 'Phil' was based on Oliver Philpott who successfully made it to neutral Sweden and later wrote about it in his book *Stolen Journey*. David Tomlinson would also go on to star in *Mary Poppins* and *Bedknobs and Broomsticks*. He wrote about his time at Lympe in his autobiography *Luckier Than Most* of 1990.

Another was Charlie Chaplin who flew into Lympe solo in October 1921 to meet his friend Philip Sassoon. At the time he was flying from Paris to Croydon Airport where the press were waiting there for his arrival, not knowing he was calling at Lympe en route.

In the late 1940's and after, Noel Coward, had a cottage locally alongside the Royal Military Canal. He was a judge at the 1948 air racing event in his capacity as a Vice President of the CPFC. Some of his many films include *In Which We Serve* of 1942 and *The Italian Job* of 1968. With him on the day was New York born actor Douglas Fairbanks Jnr. famous himself for *The Prisoner of Zenda* in 1937 and *Gunga Din* in 1939. He had also been a decorated naval officer in WW2.

In the 1950's famous actors flying with *Silver City* included Boris Karloff with his wife in 1953, Gregory Peck in 1954 and David Niven. Six times married Boris Karloff was born William Henry Pratt and went on to be known as Frankenstein's monster in a trio of films in the 1930's. Gregory Peck is famous for many films including *Twelve O'clock High* of 1949 and *The Guns of Navarone* of 1962. David Niven served in the British Army in WW2 and was famous for playing James Bond in a 1960's spoof *Casino Royale* among many other roles including *The Way Ahead* of 1944 and *The Guns of Navarone*.

Towards the end of the life of Lympe Airfield, British comedy actor Larry Martyn was a member of the *Eagle Parachute Centre*. He was best known for playing Mr Mash in *Are You Being Served?* He also made a guest appearance in *Dad's Army*.

Contact: John Simpson on 07508 708725 or email: johnsimpson43@btinternet.com for information

STUDYING HISTORY AND ARCHAEOLOGY IN LYPMPNE

SHAL's 4th excavation project in Lympe under the guidance of our professional archaeologist, Richard Taylor, has developed further. In addition to SHAL members, experienced volunteers from Kent Archaeological Society, and Dover Archaeological Group under Keith Parfitt, have brought their skills, such as in cutting a new small trench with straight sides and flat floors. These skills have allowed us to move forward in unearthing two or three new trenches based on geophysics in an area where some interesting coins and artefacts were found. The opening of these trenches has contributed to the aim of clarifying the overall layout of the site and in discovering the separate activities within this layout, such as the exposure of a possible furnace. The third development was in the interesting finds such as a Roman coin dated to 364-75, late in the existence of the fort. Relevant information from the last week of the August excavation will be included in the Report in October.

For our next meeting on 17th September at 7.30pm in the Harry Margary Hall **Simon Elliott** will talk on his book '*Roman Pirate King*' about Carausius, Britain's very own Roman Emperor. Non-members are welcome.



St Stephen's Church

Services September

(for eco warrior volunteer days please visit the church website)

1st Parish Communion	11am
8th Family Service	11am
15th Parish Communion	11am
22nd Parish Communion	11am
29th Benefice Communion	11am



1st Sunday of the Month, 9:45am, Lads' Club

BUBBLE CHURCH

Sunday Club (ages 3-10)

Meet 10-11am Lads' club

Contact Christine Clover:

Call 0300 030 1662 or text 07379 877846

christineclover@lympneandsaltwoodchurches.uk



Come and join us at Lympne & Saltwood Toddlers 10 - 11:30am

Thursday mornings in the Harry Margary Hall, Aldington Road, Lympne

Lympne Fellowship

On a lovely August afternoon we thoroughly enjoyed the opportunity to just socialise and chat among friends during our annual picnic on the playing field. Although the British weather can often be unpredictable, the sun shone and the temperature remained at a comfortable level. What a lovely way to spend a summer afternoon.

Lympne Fellowship normally meets at 1.15pm in the Harry Margary Hall on the 2nd Thursday of the month, with a programme of interesting and informative talks and activities. For further information about our group, please contact Jill Page on 07846 819693

ST STEPHEN'S CHURCH, LYMPNE COFFEE MORNING

SATURDAY 14 SEPTEMBER 2024

10.30am - 12.30pm



- Come and join us for coffee, cakes and savoury bakes. If the sun is shining, sit out and enjoy.
 - Take a break while out for that walk (*well-behaved dogs welcome*)
 - Catch up with old friends and new
 - Enjoy the songs from the musicals with Richard on the piano
- Proceeds to maintenance of the church plus a donation to this month's nominated charity:*
MACMILLAN CANCER SUPPORT

ST STEPHEN'S CHURCH, LYMPNE LYMPNE'S FAVOURITE RECIPES

For the Millenium, Lympne produced its own recipe book "A Meal for All Seasons". Some of you may still have, and use, your copy. Well, that was 25 years ago! We now want to create an updated one, with new recipes for the latest cooking devices in our kitchens.

We would love to include one of your favourites, be it a starter, main, dessert recipe, or to go with your morning coffee or afternoon cuppa, and whether for the oven, microwave, airfryer. Please send them in with your name, tel no. and email address to:

Fiona Jarvest: fionajarvest22@gmail.com

36 Octavian Drive, CT21 4JG, or hand it in to the church, which is open during the day.

Thank you.

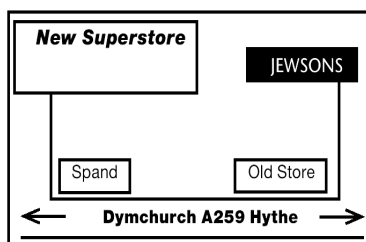
Fiona



Dymchurch Road, Hythe, Kent

01303 264052

Email: sales@davidianfurnitureltd.com



**REMOVAL AND STORAGE
CALL NOW FOR A FREE QUOTE**
*TERMS & CONDITIONS APPLY

OPEN 6 DAYS A WEEK
Mon - Fri 9am - 5.30pm Sat 9am - 5pm



TRADING STANDARDS

APPROVED

working in partnership with
Checkatrade

10% Discount for Lympne Residents at



**LYMPNE
PARISH COUNCIL
CONTACT
DETAILS**

If you have any queries regarding local issues, or any other matters you wish to raise, you can contact Lympne Parish Councillors
Current Members
Chair Mike Boor
ViceChair Anne Beales

Claire Yates
Michael Potter
Judith East
Michael McAuley
Steve Bingham
Correspondence should be sent to the Parish Clerk **Jeff Lawrence**
29 Honeywood Close
Lympne
Tel: 01303 883 228
e-mail: clerk@lympneparishcouncil.gov.uk

squiggle

WILLS
TRUSTS
POWER OF ATTORNEY
PROBATE

Death isn't something most of us want to talk about or think about. And why would we? But what we DO want is for our loved ones to be looked after when we're gone.

And yet, nearly half of us don't have a will or even a plan for our estate when we die. It's something many just don't get round to - despite knowing that we should.

Book your free consultation with Squiggle today.

01233 659796

www.squiggleconsult.co.uk

Squiggle Consult Ltd
11 Park Barn, Evegate Business Park, Mersham, TN25 6SX
Registered Company - 10816512



Private Home Care
Specialists in 1-to-1 home care
of elderly and vulnerable people

- Medication
- Personal Care
- Security Checks
- Outings
- Domestic
- Wake / Sleep Nights
- Live in

Disability Cars for our clients available 24 hours a day



Office at 7 Great Conduit Street, Hythe

☎ **01303 847422**

☎ **0756 3636 332**

✉ privatehomecarekent@gmail.com

🌐 Privatehomecare.co.uk

SHEDS AND OUTBUILDINGS: ESSENTIAL HOME SECURITY TIPS

While many focus on securing their homes, sheds and outbuildings are often overlooked, making them prime targets for thieves. These spaces, often filled with valuable tools, bikes, and equipment, are vulnerable to theft. In fact, nearly 22,500 thefts from outbuildings and sheds were reported in England and Wales in 2021-2022. With the average shed housing goods worth over £1,000, securing these areas is crucial.

WHY SHEDS ARE TARGETED: Sheds and outbuildings are usually less secure than the main house, making them easy targets. Their location, often away from the main residence and in less visible areas, further increases the risk.

KEY SECURITY TIPS

1. Upgrade Locks:

Invest in sturdy, weatherproof padlocks. Ensure windows are also secured with locks or bars.

2. Reinforce Structure:

Strengthen doors and windows with brackets or metal plates. Ensure the shed is anchored securely.

3. Install Security Lighting:

Motion-activated lighting around your shed deters thieves by increasing visibility.

4. Use Alarms:

Consider installing a battery-operated alarm system for your outbuildings, or connect it to your main home alarm.

5. Mark Your Property:

Mark tools with a UV pen or engrave them, and register them on a national database like Immobilise.

6. Consider CCTV:

A CCTV camera covering the shed's entrance can act as a deterrent and help identify criminals.

7. Secure Tools and Ladders:

Always lock tools and ladders away in a secure shed or garage to prevent them from being used in a break-in.

8. Regular Security Checks:

Regularly check that your locks, alarms, and other security measures are functioning correctly. For more advice, visit the Kent Police website or check resources from crime prevention charities like **Secured by Design** and **Neighbourhood Watch**. By taking these simple steps, you can significantly reduce the risk of theft and protect your valuables.



**NEWS LETTER
DIRECT TO YOUR IN BOX? -
SAY NO MORE**

If you would like to receive this newsletter direct to your email each month please copy the following link into your preferred browser and subscribe to our E-newsletter service.
<http://eepurl.com/hfeE9v>
Alternative scan the QR code to be taken to the subscription form.
Only a first name and an email are required.

LOCAL TRADES TRADES



Studio J
Hair Salon
A family business
in the heart of
Lympne.

20% OFF FOR NEW CLIENTS
ON 1ST VISIT.

Call us on 01303 267877,
text 07833 031717 or find us on
instagram @studio_j_hair_lympne.



07745 532075

Mobile Foot Health Practitioners.
Treating and managing foot and nail
conditions, corns, callus, fungal,
fingernails, diabetic foot care
www.eastkentfootcare.co.uk

ASHTON TREE CARE

Hedge cutting , stump grinding ,
tree surgery
All work fully insured
Contact 07929 627 622
ashtontreecare@gmail.com

PLUMBER

**City & Guilds qualified
Affordable, Reliable and Local**
All work fully insured and
guaranteed. Wide range of hot
and cold water services. See
website for further details,
rates and customer feedback.
Call now on 07899 034 695
for a no-obligation, free quote
or visit our website:
www.condicoplumbing.co.uk

NUMERACY OR LITERACY SUPPORT

**Would a young person you
know benefit from additional
numeracy and/or
literacy support?
I am a qualified and
experienced SEN teacher
with 20 years experience
I have a limited number of 1:1/
small group sessions available
Sessions from £12.50p/h
Contact Bea 07412 808 098**

LYMPNE PARISH COUNCIL CANNOT ACCEPT RESPONSIBILITY FOR THE ACCURACY OF ANY
OF THE DETAILS ADVERTISED. YOU ARE STRONGLY RECOMMENDED TO TAKE
APPROPRIATE ADVICE BEFORE ENTERING INTO ANY COMMITMENT.

VILLAGE HALL BOOKINGS VISIT

[http://
www.lympnevillagehall.co.uk/
bookings/](http://www.lympnevillagehall.co.uk/bookings/)



ACC ELECTRICAL

Fuse board changes,
cctv,alarms, PAT
testing, smoke alarms,landlord safety
checks,
security,lighting,rewires, smoke
detectors and much more!
Free Quotations and friendly
reliable service
01303 211 011/07595336880
info@accelectrical.co.uk
www.accelectrical.co.uk

WRAIGHT'S MOWERS

NEWINGREEN (A20)
Servicing,Repairs,Sharpening
Spares and Sales
all makes of petrol & electric mowers.
Benham Water Farm,
Ashford Road (A20)
Newingreen, CT214JD
Opposite old race course
Tel 07733293315

TAXI IN THE VILLAGE.

Short, long or any distance.
Airport, docks, etc.
Ask for a quote.
Speak to Geoff
Phone 07703 444 814

DN PLASTERING SERVICES

Local, Trustworthy & Reliable
Over 25 Years Experience
Call Darren 07932 002 442
dnplasteringservices@gmail.com

CURTAINS

Handmade
curtains,blinds and soft furnishings.
Curtain alterations.
Call Valery Wren
01303 237 755

THE EXECUTIVES SUITE

Virtual Support Service
Remotely supporting time limited
business owners
with administrative tasks.
Travel, diary management,
inbox detox & lifestyle
management.
Contact Natalie Dowsett at
natalie@theexecutivessuite.co.uk

CATHERINE'S CLEANING

Over 4 years Cleaning Experience
Regular Cleans
Spring Cleans
Serving Lympne,Hythe
and surrounding areas.
DBS checked, references on request.
Call or message Catherine on:
07957991266
Email: flower.powercat@hotmail.co.uk

SPOTLIGHT PEST CONTROL SERVICES LTD

British Pest Control
Association member.
General pest control including rats,
mice, moles, wasps, ants, fleas,
bird spikes and general proofing
Fast, friendly and
reliable.
Contact Dave on 07715211899.
info@spotlightpestcontrolkent.co.uk
www.spotlightpestcontrolkent.co.uk



I'm Michelle, local
branch owner for
Sales and Lettings
for The Good
Estate Agent.
We are a 13 year old
family run,
Nationwide business, with our Head
Office in Lympne.
I take pride in my high quality
customer service and my doors
don't close at 5pm!
For a Free Sales or Lettings
valuation please call 07848015443
or email
michelleferbrache@thegood.co.uk

Kingdom

CARPET CO.

- Carpets Supplied & Fitted
- Carpets Professionally Cleaned
- Carpets Whip Edged & Cotton Bound

Whatever your carpet need, give us a call for a
FREE estimate / assessment.

Over 50 years combined experience.

07943 764 442

Email: kingdom.carpet.co@gmail.com

LOCAL TRADES



CN ELECTRICAL

DOMESTIC &
RESIDENTIAL

New Sockets, Fault Finding,
Rewires, Lighting,
Consumer units and much more!
NICEIC REGISTERED ELECTRICIAN

Contact Chris
Mob : 07826 505671
www.cnelectrical.co.uk
info@cnelectrical.co.uk

RICHARD AJ THOMPSON LTD
Plumbing & heating engineer
Gas Safe Registered-No 513449,
22 years experience.
Central heating boiler servicing,
repairs and installations.
All domestic plumbing repairs,
Water softeners, gas fires, cookers
and water heaters.
Landlord's Safety Certificates.
Tel 01303 266 273
Mob 07540 333 250

MUTTS APPRECIATED
Professional Dog Grooming Services
Based in Newingreen
Fully qualified and insured
All breeds welcome
Tel: 07927335947
Instagram: @muttsappreciated

EX-JOB AND DOGS

Retired local police officer offering
Dog Walking, Dog Day Care
Boarding in Home Environment
Home Watch Service Long/short term
Including Cat Care
Contact Kerry
with your requirements
CONTACT 07791 095 895
exjob17@gmail.com

HANDYMAN AND BUILDING MAINTENANCE

Roofing, Guttering,
Plumbing, Drains,
Painting, Decorating,
Plastering
Free Estimates
References available

Contact 07836 665382

THE BOWEN TECHNIQUE
BOWEN THERAPY IN LYMPNE
Back pain, arthritic pain, asthma,
digestive disorders, migraine,
practically any problem can
potentially be addressed.
Lynne Rodgers, Cert ECBS.
Call 01303 268 910 or
lynnealexrodgers@gmail.com

PAINTING, DECORATING & HANDYMAN

Interior and Exterior – All types
undertaken. FREE ESTIMATES.
30 YEARS EXPERIENCE
Call Mick Cockburn
Mobile 07769 221 871

PIANO LESSONS
Enjoy learning the piano with an
experienced teacher in a pleasant
home near Lympe Primary
School. Children and adults of all
abilities welcome. It's never too
late to start - just bring your fingers
and a love of music!
Contact Kate Chesterman,
Bachelor of Music (Hons)
Tel 07903 994 049 or Email:
lympnekate@gmail.com

LYMPNE VILLAGE STORES AND POST OFFICE

OPEN from 830-530 weekdays
Saturday 830-2pm
Sundays CLOSED

Visit us for your everyday needs
Milk, bread, eggs and your daily
newspaper or magazine and the
National Lottery.

REFUSE COLLECTION DATES

September 2024

Recycling (Purple Lid/Black
Box) and Food Waste will be
collected on: Tuesday 3rd and
17th

Non-Recyclables (Green Lid)
and Food Waste will be
collected on: Tuesday 10th
and 24th.

Garden Waste Collections 11th
and 25th.

*Please do not put the lid on the
Black Box—use the food waste
container or a heavy object.*

LYMPNE OVER 50s LUNCH CLUB

Join our friendly social group for a
chat over a hot meal, dessert and
tea or coffee with fun activities,
bingo or quizzes. Taking place at
the Harry Margary Hall on the 2nd
Friday of each month Cost £8.50.
Booking the meal is essential at
least the day before. Contact
Margaret on 01303 269557.
Transport available, if necessary,
within Lympe Village

MEDITATION COURSES

More and more people are learning to use the skills of meditation and
their breathing as a way of supporting their health and wellbeing,
keeping their minds fit and regulating their nervous systems.

I invite you to join me on my next

Mindfulness Meditation Course

Commencing Saturday 5th October 2024

Ending Saturday 23rd November 2024

10.00am – 12.30pm for 8 Sessions

Location: The Committee Room, Lympe Village Hall

Alternatively, on a WEEKDAY EVENING

Commencing Thursday 3rd October 2024

Ending Thursday 21st November 2024

For more information and to book a place

Contact Ellen: 07740857109

Email: [ejgar-](mailto:ejgar-rard2712@gmail.com)

rard2712@gmail.com://

ellengarrard.co.uk/

