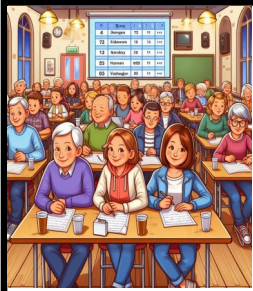


LYMPNE NEWSLETTER OCTOBER 2024



DELIVERED TO
HOMES IN LYMPNE,
NEWINGREEN
COURT-AT-STREET
AND
WEST HYTHE ROAD

IN THIS MONTHS ISSUE
STAY SAFE ON LINE, LOCAL
EVENTS, HELP CATCH THE
LITTER LOU AND MUCH MORE



A DATE FOR YOUR DIARY QUIZ NIGHT

STANFORD WITH POSTLING WI
ARE HOLDING ANOTHER
POPULAR QUIZ NIGHT ON

**SAT: 19th OCTOBER STARTING
AT 7 PM .**

ENTRANCE IS £7.50 PER PERSON AND THIS
INCLUDES A PLOUGHMANS SUPPER.

IT WILL BE HELD IN THE LYMPNE VILLAGE
HALL AND TABLES OF 6 PEOPLE ARE
WELCOME TO BOOK A TABLE
RING IONA ON 01303 238390 .

PLEASE NOTE AMENDED DATE BELOW



**MURDER
MYSTERY
EVENING**
Lympne Village
Hall

Hosted by Hythe & District Group of Guide Dogs
Saturday 16th November 2024 at 7.30pm
Ticket £10.00pp (Bring your own food and Drink)
Teams/Tables of 4 -6 people

To book or for further information, please
contact Anne Chapman Mobile 07791324596 or
email guidedogshytheanddistrict@gmail.com
Look forward to seeing you there!



Get Safe Online
Free expert advice

Stay Safe Online : Essential Tips to Avoid Scams

Yes may be it is too early to mention Christmas but it is only a matter of a couple of months away and many of us plan early with online shopping and festive communications. However, this is also a prime time for cyber threats, as scammers exploit the increased online activity. Whatever age you are, been using online services for ages or a young person just starting out it's crucial to stay alert.

For the Elderly: Seniors who are new to online shopping or social media may be particularly vulnerable to scams during the Christmas period. Fraudulent emails, fake websites, and deceptive phone calls can be especially convincing at this time of year. Remember, if an offer seems too good to be true, it probably is. Always verify the authenticity of any unsolicited communications before sharing personal or financial information. Use strong, unique passwords and enable two-factor authentication to add an extra layer of security. Ask your family or friends for help if you are concerned. You can also contact the Parish Clerk who will be able to point you in the direction of help.

For Young People: Young users, who frequently engage with social media and online platforms, should be cautious about holiday-themed promotions and messages. Scammers may exploit the festive season to send phishing links or deceptive offers. It's important to maintain strict privacy settings and be wary of unexpected offers or requests for personal information. Encourage open discussions about online safety and reporting suspicious activity to a trusted adult.

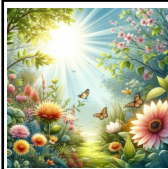
General Tips for All: As you prepare for Christmas, keep these safety tips in mind: regularly update your software, avoid clicking on suspicious links, and use reputable websites for purchases. Reliable antivirus software can also help protect your devices.

For more detailed advice on staying safe online, visit www.getsafeonline.org.

This resource offers practical tips to help secure your digital activities during the Christmas period and beyond.

By staying informed and cautious, we can all enjoy a secure and festive Christmas season.

TO ALL OUR CONTRIBUTORS OR FOR ANY EVENTS FOR NOVEMBER ISSUE PLEASE
SUBMIT TO THE EDITOR AT NEWSLETTER@LYMPNEPARISHCOUNCIL.GOV.UK
NO LATER THAN 15TH OCTOBER 2024



KENT GARDENER

The seasons are all mixed up making it difficult to know what needs doing in the garden first. Do pots need watering or standing on bricks to prevent waterlogging? The rain can be torrential at times. Last winter was mild but what frost we had was severe, so some preparation is necessary and watch the weather forecast. By the end of the month shelter tender plants and, if not lifting, dahlias and the like need a deep mulch, at least 10cms. This summer has been unusually windy so tie in climbers and tall plants in case the trend continues. Climbing roses should be tied horizontally to encourage more flowers but bush roses, buddleias and shrubby subjects should be cut back by half to minimise wind rock. Falling leaves should be cleared off the lawn and from the crown of plants but otherwise leave on borders to rot down. This will nourish the soil and provide shelter for wildlife over winter. This year's butterfly count showed it had been the lowest in numbers seen for a long time so they, their caterpillars and other pollenating insects need all the help we can give them. Delay cutting back herbaceous plants and seed heads and don't be too tidy in the garden. If the borders or pots need a lift, try some late flowers like chrysanthemums or a bush with leaves that colour up or produce berries. Bird boxes need cleaning out or putting up, they make good roosting places for small birds during cold nights and, who knows, they may come back in spring to nest. Happy gardening.



THE LYMPNE PLAYING FIELD AND VILLAGE HALL COMMITTEE

Notice of
Annual General Meeting

Tuesday 12th November, 7:30pm, in the village hall

This is your chance to meet the committee, hear about what we've been up to in the last year, examine our financial accounts and raise any questions, or maybe even get involved yourself.

Our secretary has decided to stand down this year, so I would be particularly interested in hearing from anyone who would be interested in taking on this important role.

If you want to know more, email
chair@lympnevillagehall.co.uk

LYMPNE VILLAGE HALL FILM CLUB

IN THE HARRY MARGARY HALL

Films will be shown every **4th Tuesday of the month** (not December).

MAKE A DATE IN YOUR DIARY FOR THIS POPULAR VILLAGE EVENT. ALL PROFITS GO TO THE VILLAGE HALL FUND.



7.15 for a 7.30 start



FREE MEMBERSHIP

Entrance fee of £5.00 includes refreshments and lucky draw ticket.

Showing on: **22nd October**

THE STING

Robert Redford and Paul Newman in a clever yarn of revenge over a ruthless crime lord. Plenty of twists and turns to the foot-tapping ragtime music of Scott Joplin.

Showing on **26th November:**

WALK THE LINE: *The ups and downs in the career of Johnny Cash, who rebelled against convention and revolutionised country music.*



We reserve the right to show a substitute film should the need arise or to refuse admission. Children under 16 must be accompanied by an adult (ID will be requested).

ST STEPHEN'S CHURCH, LYMPNE LYMPNE'S FAVOURITE RECIPES



For the Millenium, Lypne produced its own recipe book "A Meal for All Seasons". Some of you

may still have, and use, your copy. Well, that was 25 years ago! We now want to create an updated one, with new recipes for the latest cooking devices in our kitchens.

We would love to include one of your favourites, be it a starter, main, dessert recipe, or to go with your morning coffee or afternoon cuppa, and whether for the oven, microwave, airfryer. Please send them in with your name, tel no. and email address to:

Fiona Jarvest: fionajarvest22@gmail.com

36 Octavian Drive, CT21 4JG, or hand it in to the church, which is open during the day.

Thank you. Fiona

GET VACCINATED



GET WINTER STRONG

Check your eligibility for flu and COVID-19 vaccines and book now at nhs.uk/wintervaccinations

HIGHWAY IMPROVEMENT COMMENTS GRATEFULLY RECEIVED

We appreciate all residents who shared their suggestions for highway improvements. Your feedback is crucial and will be carefully reviewed for future Parish Council meetings. Thank you for contributing to our community's progress and helping us build a better, safer parish.



HELP US FIX THE FAULTS: REPORT HIGHWAY ISSUES ONLINE!

Residents have reported several issues with highways, including problems with paths, roads, and street lighting. Kent County

Council provides an easy way to address these concerns. To report a highway defect, visit the Kent County Council website and navigate to the 'Report a Problem' section. There, you can submit details and upload photos of the issue. This online service ensures that your concerns are quickly reviewed and addressed. For further assistance or to track the status of your report, you can also contact the council directly through their website. Your input helps keep our roads safe and well-maintained.

Visit <https://www.kent.gov.uk/roads-and-travel>

David Ian REMOVAL SERVICE

FURNITURE & BEDS

LET US MOVE YOU

Providing Flexibility to make your move run smoothly for you

- Local, National & European Removals
- Home Office or Commercial
- House Clearance & Disposal Service Available
- Short Notice No Problem, Same Day Service Available
- Storage Facilities
- Full Packing Service Available
- No Job Too Small
- CALL THE EXPERTS



www.davidianfurniture.com

CALL NOW FOR A FREE QUOTE
01303 264052

Dymchurch Road | Hythe | Kent
Email: sales@davidianfurnitureltd.com



COMMUNITY NOTICE: UNSOCIABLE LITTERING ON STONE STREET

A local resident has reported an incident of inconsiderate littering on Stone Street. Recently, while walking their dog, they found a glass bottle that had been deliberately thrown from a moving car, shattering and scattering glass on the path and grass. Although the resident cleaned up most of the glass, hidden shards may remain, posing a risk to those using this route, including children walking to school.

This is part of an ongoing issue, with the same resident regularly finding litter in the area, including Red Bull energy drink cans. It seems this may be the work of one individual showing little regard for others, our countryside, or wildlife.

We ask all residents to stay vigilant. If you have noticed anything unusual or have any information that might help identify the person responsible, please reach out. Working together, we can help keep our village clean and safe for everyone.

We are hoping that if you are out in this area you can keep an eye out. If you have any information please contact the Parish Clerk. Let's protect our shared spaces and local environment.

of the **Battle of Britain Memorial** from Capel-le-Ferne near Folkestone. Barry will take us through the history of this memorial to *The Few*, and some of those personalities commemorated there. This is his last such presentation as he hands over his role to a new colleague soon. **Our meetings start at 7.30pm at Lympne Church. Doors open 6.30pm. Admission £3**

This month we look at the last pre-war record breaking pilot Jim Broadbent, no stranger to Lympne Airfield.

The End of an Aviation Era by John Simpson

On the 22nd April 1938 Jim Broadbent landed at Lympne after a record breaking flight from Darwin, Australia. He had broken Jean Batten's record for the same route by nearly fourteen hours. Since the end of WW1 aviators had used Lympne as a take off point or for landing at the end of such attempts. Amy Johnson, Jim Mollison, Charles Scott, Jean Batten, Charles Kingsford Smith, Tommy Rose and H.L. Brook had all set records before from or to Lympne. Others had perished trying to do so, but it was Jim Broadbent who was the last of this interwar 'breed'.

Born Harry Frank Gibbs in Chiswick on 25th March 1910, he became 'Jim Broadbent' after his parents' divorce. His mother brought him to Australia, and married John Allan Broadbent in 1923. From this point Harry Frank Gibbs wanted to be known as 'Jim Broadbent'. His father Joseph Gibbs, had been a music hall vocalist calling himself 'Frank Harwood'. His mother was born Madge Adelaide Rickards.

Jim was inspired by Australian aviators Bert Hinkler and Charles Kingsford Smith and joined the New South Wales section of the *Australian Aero Club* as a result. He gained his private pilot's licence on 20th November 1929. The next year he attempted to beat Kingsford Smith's England – Australia record, but failed. In 1931 he bought an Avro Avian and started to set record breaking flights within Australia, including a 'round Australia record in 7 days, 8 hours, 25 minutes. On New Year's Eve he married Beryl Elizabeth Bower at Randwick. In 1932 he gained a commercial licence and bought a De Havilland Puss Moth and started an air taxi service. This service was put on hold when all Puss Moths were grounded following an accident when an investigation was carried out. He started to train racehorses while this happened as he waited for the ban to be lifted. In 1933 he reactivated his air taxi service and the domestic Australian flying continued, to be followed by another attempt to fly solo from Darwin to the UK, but had to retire with a damaged plane at Basra, Iraq. He continued to England by Imperial Airways. He then returned to Australia in a record breaking flight in his Puss Moth in 6 days, 21 hours, 19 minutes. He had beaten Kingsford Smith's record from Lympne of 1933.

There followed a see saw of record breaking flights by Jean Batten and Broadbent as they broke each other's Australia – England records, until 1938. On one such flight from Lympne to Australia on 12th March 1938 in his Percival Vega Gull, he was short of fuel and was forced to land in Indonesia at Flores Island on a minute airstrip. The propeller was bent on landing. He was taken by Dutch naval seaplane on his way and thereafter by Qantas to Sydney. Any record breaking flight was now in vain. After a protracted return journey with a De Havilland engineer, the Vega Gull was repaired and eventually continued to Darwin.

The record Darwin to Lympne flight made by Jean Batten in 1937, was finally broken in 5 days, 4 hours, 21 minutes in April 1938 when he made the return flight in his Vega Gull G-AFEH. His staging points were; Darwin, Sourabaya, Singapore, Rangoon, Calcutta, Allahabad, Jodhpur, Basra, Nicosia, Rome and Lympne. It was the last such flight of this type, and the end of an era. This record still exists to this day. After this time Broadbent turned to piloting flying boats between Sydney and Singapore for *Qantas Empire Airways*. This led on to flying aircraft for RAF Ferry Command in WW2 flying from Canada and the USA to the UK and Australia. He also flew for the *Allied Directorate of Air Transport* flying Lockheed Electras. In 1948 he was divorced, and went on to marry 24 year old Meris Chilcott Rudder in Australia in 1950, and returned to England. In 1952 he flew Bristol Freighters for *Silver City*. This could well have included Lympne as *Silver City* were flying from Lympne for two more years before transferring to Lydd Ferryfield in October 1954. In November of the same year he began flying Short Solent flying boats for *Aquila Airways* from Southampton to Lisbon, Madeira and Las Palmas.

In 1958 he became an instructor for the Portuguese airline, *Aero Topografica* or *Artop*. It was while flying a Martin Mariner flying boat that he made a report that he was making an emergency landing in the Atlantic 250km south west of Lisbon, Portugal bound for Madeira. No trace was ever found of Broadbent or Thomas Rowell his co-pilot, his other crew of four, thirty passengers or the aircraft itself. It was 9th November 1958. He was survived by his wife and his two children from his first marriage.



St Stephen's Church

Services October

(for eco warrior volunteer days please visit the church website)

6th Parish Communion	11am
13th Family Service	11am
20th Parish Communion	11am
27nd Parish Communion	11am



1st Sunday of the Month, 9:45am, Lads' Club

BUBBLE CHURCH

Sunday Club (ages 3-10)

Meet 10-11am Lads' club

Contact Christine Clover:

Call 0300 030 1662 or text 07379 877846

christineclover@lympneandsaltwoodchurches.uk



Come and join us at Lympe

& Saltwood

Toddlers

10 - 11:30am

Thursday mornings in the

Harry Margary Hall,

Aldington Road, Lympe

ST STEPHEN'S CHURCH, LYMPNE

ART EXHIBITION

FRIDAY 1ST AND

SATURDAY 2ND NOVEMBER 2024

10.00AM - 4.00PM

PAINTINGS BY BRIAN ROSE

FOR MANY YEARS CHURCHWARDEN OF ST STEPHEN'S

And PAT ROSE

ALL PROCEEDS FROM THIS EXHIBITION WILL GO TO THE UP-KEEP OF OUR BEAUTIFUL GRADE 1 LISTED CHURCH

ST STEPHEN'S CHURCH, LYMPNE

COFFEE MORNING

SATURDAY 19 OCTOBER 2024

10.30am - 12.30pm



IT'S TIME for Coffee

➤ Come and join us for coffee, cakes and savoury bakes.

➤ Take a break while out for that walk (well-behaved dogs welcome)

➤ Catch up with old friends and new

➤ Enjoy the songs from the musicals with Richard on the piano

Proceeds to maintenance of the church plus a donation to this month's nominated charity:

WATER AID

Lympne Fellowship: At our September meeting we were entertained by Sue Gibson, one of our members, with an amusing and informative talk about her 'Big Holiday' to Australia and New Zealand in 2022. Arriving in Perth, Sue and her husband embarked on a well-planned tour of Australia, taking the opportunity to embrace a variety of experiences where she pushed herself outside her usual comfort zone, including parascending, something she found terrifying. Finally arriving in Melbourne, they flew on to New Zealand, to enjoy the awe-inspiring scenery and find the place where her father had been born. A trip that had very special meaning to her and one she will always remember.

Lympne Fellowship normally meets at 1.15pm in the Harry Margary Hall on the 2nd Thursday of the month, with a programme of interesting and informative talks and activities. For further information about our group, please contact Jill Page on 07846 819693

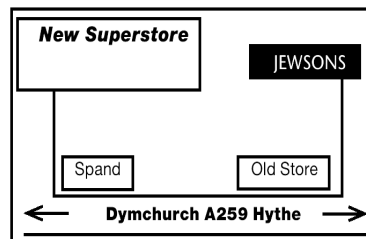


FURNITURE & BEDS SUPERSTORE

Dymchurch Road, Hythe, Kent

01303 264052

Email: sales@davidianfurnitureltd.com



REMOVAL AND STORAGE CALL NOW FOR A FREE QUOTE *TERMS & CONDITIONS APPLY

OPEN 6 DAYS A WEEK

Mon - Fri 9am - 5.30pm Sat 9am - 5pm



TRADING STANDARDS

APPROVED

working in partnership with Checkatrade

10% Discount for Lympne Residents at



**LYMPNE
PARISH COUNCIL
CONTACT
DETAILS**

If you have any queries regarding local issues, or any other matters you wish to raise, you can contact Lympne Parish Councillors
Current Members
Chair Mike Boor
Vice Chair Anne Beales

Claire Yates
Michael Potter
Judith East
Michael McAuley
Steve Bingham
Correspondence should be sent to the Parish Clerk **Jeff Lawrence**
29 Honeywood Close
Lympne
Tel: 01303 883 228
e-mail: clerk@lympneparishcouncil.gov.uk

STUDYING HISTORY AND ARCHAEOLOGY IN LYMPNE

In September our speaker, Vince Williams, gave a comprehensive talk on Folkestone in World War 1 1914–18. Prior to 1914 Folkestone had been a very busy holiday resort with hotels employing German serving staff. The outbreak of war resulted in ships from France being diverted to Boulogne and onward to Folkestone, and immediately trade and transport dried up.

Lord Kitchener's famous appeal 'Your country needs you' resulted in men and women joining the forces, and hotels and hospitals commissioned as hospitals for the wounded. The first main group of soldiers returned wounded at the end of September 2014, together with over 2000 Belgian troops and refugees. In Folkestone Committees were formed to organise these intakes and the Belgian consulate was opened in Sandgate Road in Bobby's Dept. Store (later Debenhams). In early 1915 there were concerns over submarines near Folkestone but not one troopship was hit and many thousands of troops walked along Lower Sandgate Road. In late 1915 Australian and Canadian troops were based on the Leas, followed by a further contingent of 41000. The Canadians dug trenches at Shorncliffe and practised in the trenches. More Canadian hospitals were opened as they integrated into the Folkestone community and some of them married English women.

At the end of October 1915 King George V visited Lyminge, Beachborough, and then rode on horseback to Cheriton. At that time laundries were engaged in cleaning uniforms with female workers. In early 1916 the Germans attacked by seaplane and a number of rest camps were opened in Marine Gardens and other places in order to support the community and provide sports and recreational facilities. In 1916 a Zeppelin dropped its remaining 5 bombs in the sea on the way back, and later intensified bombing on the Leas No. 3 Camp. In 1917 94000 Chinese arrived and lived in huts on Cherry Garden Avenue, keeping busy in clearing mines, and another Chinese group were at Shorncliffe Military Centre. Later in May the Germans dropped 16-18 bombs killing 61-63 people. Life then started to return to normal with a 2nd Canadian Ceremony.

At our 15th October meeting at 7.30pm in the Harry Margary Hall Dr. Martin Watts will talk on 'Richborough Harbour World War 1 and 2'. Non-members are welcome.

squiggle

WILLS

TRUSTS

POWER OF
ATTORNEY

PROBATE

Death isn't something most of us want to talk about or think about. And why would we? But what we DO want is for our loved ones to be looked after when we're gone.

And yet, nearly half of us don't have a will or even a plan for our estate when we die. It's something many just don't get round to - despite knowing that we should.

Book your free consultation with Squiggle today.

01233 659796

www.squiggleconsult.co.uk

Squiggle Consult Ltd
11 Park Barn, Evegate Business Park, Mersham, TN25 6SX
Registered Company - 10816512



Private Home Care Specialists in 1-to-1 home care of elderly and vulnerable people

- Medication
- Personal Care
- Security Checks
- Outings
- Domestic
- Wake / Sleep Nights
- Live in

Disability Cars for
our clients
available 24 hours
a day



Office at 7 Great Conduit Street, Hythe

☎ **01303 847422**

☎ **0756 3636 332**

✉ privatehomecarekent@gmail.com

🌐 Privatehomecare.co.uk

LOCAL TRADES



Studio J
Hair Salon
A family business
in the heart of
Lympne.

20% OFF FOR NEW CLIENTS
ON 1ST VISIT.

Call us on 01303 267877,
text 07833 031717 or find us on
instagram @studio_j_hair_lympne.



07745 532075

Mobile Foot Health Practitioners.
Treating and managing foot and nail
conditions, corns, callus, fungal,
fingernails, diabetic foot care
www.eastkentfootcare.co.uk

ASHTON TREE CARE

Hedge cutting , stump grinding ,
tree surgery
All work fully insured
Contact 07929 627 622
ashtontreecare@gmail.com

PLUMBER

City & Guilds qualified
Affordable, Reliable and Local
All work fully insured and
guaranteed. Wide range of hot
and cold water services. See
website for further details,
rates and customer feedback.
Call now on 07899 034 695
for a no-obligation, free quote
or visit our website:
www.condicoplumbing.co.uk

NUMERACY OR LITERACY SUPPORT

Would a young person you
know benefit from additional
numeracy and/or
literacy support?
I am a qualified and
experienced SEN teacher
with 20 years experience
I have a limited number of 1:1/
small group sessions available
Sessions from £12.50p/h
Contact Bea 07412 808 098

LYMPNE PARISH COUNCIL CANNOT ACCEPT RESPONSIBILITY FOR THE ACCURACY OF ANY
OF THE DETAILS ADVERTISED. YOU ARE STRONGLY RECOMMENDED TO TAKE
APPROPRIATE ADVICE BEFORE ENTERING INTO ANY COMMITMENT.

VILLAGE HALL BOOKINGS VISIT

[http://
www.lympnevillagehall.co.uk/
bookings/](http://www.lympnevillagehall.co.uk/bookings/)



ACC ELECTRICAL

Fuse board changes,
cctv,alarms, PAT
testing, smoke alarms,landlord safety
checks,
security,lighting,rewires, smoke
detectors and much more!
Free Quotations and friendly
reliable service
01303 211 011/07595336880
info@accelectrical.co.uk
www.accelectrical.co.uk

WRAIGHT'S MOWERS

NEWINGREEN (A20)
Servicing,Repairs,Sharpening
Spares and Sales
all makes of petrol & electric mowers.
Benham Water Farm,
Ashford Road (A20)
Newingreen, CT214JD
Opposite old race course
Tel 07733293315

TAXI IN THE VILLAGE.

Short, long or any distance.
Airport, docks, etc.
Ask for a quote.
Speak to Geoff
Phone 07703 444 814

DN PLASTERING SERVICES

Local, Trustworthy & Reliable
Over 25 Years Experience
Call Darren 07932 002 442
dnplasteringservices@gmail.com

CURTAINS

Handmade
curtains,blinds and soft furnishings.
Curtain alterations.
Call Valery Wren
01303 237 755

THE EXECUTIVES SUITE

Virtual Support Service
Remotely supporting time limited
business owners
with administrative tasks.
Travel, diary management,
inbox detox & lifestyle
management.
Contact Natalie Dowsett at
natalie@theexecutivessuite.co.uk

CATHERINE'S CLEANING

Over 4 years Cleaning Experience
Regular Cleans
Spring Cleans
Serving Lympne,Hythe
and surrounding areas.
DBS checked, references on request.
Call or message Catherine on:
07957991266
Email: flower.powercat@hotmail.co.uk

SPOTLIGHT PEST CONTROL SERVICES LTD

British Pest Control
Association member.
General pest control including rats,
mice, moles, wasps, ants, fleas,
bird spikes and general proofing
Fast, friendly and
reliable.
Contact Dave on 07715211899.
info@spotlightpestcontrolkent.co.uk
www.spotlightpestcontrolkent.co.uk



I'm Michelle, local
branch owner for
Sales and Lettings
for The Good
Estate Agent.
We are a 13 year old
family run,
Nationwide business, with our Head
Office in Lympne.
I take pride in my high quality
customer service and my doors
don't close at 5pm!
For a Free Sales or Lettings
valuation please call 07848015443
or email
michelleferbrache@thegood.co.uk

Kingdom

CARPET CO.

- Carpets Supplied & Fitted
- Carpets Professionally Cleaned
- Carpets Whip Edged & Cotton Bound

Whatever your carpet need, give us a call for a
FREE estimate / assessment.

Over 50 years combined experience.

07943 764 442

Email: kingdom.carpet.co@gmail.com

LOCAL TRADES



CN ELECTRICAL DOMESTIC & RESIDENTIAL

New Sockets, Fault Finding,
Rewires, Lighting,
Consumer units and much more!
NICEIC REGISTERED ELECTRICIAN

Contact Chris
Mob : 07826 505671
www.cnelectrical.co.uk
info@cnelectrical.co.uk

DILTON MINI SKIP HIRE
Ballast, hardcore, sand,
topsoil supplied. Registered waste
carrier.
Phone 01303 812 448, or
Mobile 07799 433 754



PILATES

Join Sharon in
Tuesday mornings
at Lympne Small
Hall for a weekly
Pilates session.
Small friendly
group

Contact Sharon 07890 563023

RICHARD AJ THOMPSON LTD
Plumbing & heating engineer
Gas Safe Registered-No 513449,
22 years experience.
Central heating boiler servicing,
repairs and installations.
All domestic plumbing repairs,
Water softeners, gas fires, cookers
and water heaters.
Landlord's Safety Certificates.
Tel 01303 266 273
Mob 07540 333 250

HANDYMAN AND BUILDING MAINTENANCE

Roofing, Guttering,
Plumbing, Drains,
Painting, Decorating,
Plastering
Free Estimates
References available

Contact 07836 665382

PAINTING, DECORATING & HANDYMAN

Interior and Exterior – All types
undertaken. FREE ESTIMATES.
30 YEARS EXPERIENCE
Call Mick Cockburn
Mobile 07769 221 871

LYMPNE VILLAGE STORES AND POST OFFICE

OPEN from 830-530 weekdays
Saturday 830-2pm
Sundays CLOSED

Visit us for your everyday needs
Milk, bread, eggs and your daily
newspaper or magazine and the
National Lottery.

MUTTS APPRECIATED

Professional Dog Grooming Services
Based in Newingreen
Fully qualified and insured
All breeds welcome
Tel: 07927335947
Instagram: @muttsappreciated

EX-JOB AND DOGS

Retired local police officer offering
Dog Walking, Dog Day Care
Boarding in Home Environment
Home Watch Service Long/short term
Including Cat Care
Contact Kerry
with your requirements
CONTACT 07791 095 895
exjob17@gmail.com

THE BOWEN TECHNIQUE
BOWEN THERAPY IN LYMPNE
Back pain, arthritic pain, asthma,
digestive disorders, migraine,
practically any problem can
potentially be addressed.
Lynne Rodgers, Cert ECBS.
Call 01303 268 910 or
lynnealexrodgers@gmail.com

PIANO LESSONS

Enjoy learning the piano with an
experienced teacher in a pleasant
home near Lympne Primary
School. Children and adults of all
abilities welcome. It's never too
late to start - just bring your fingers
and a love of music!
Contact Kate Chesterman,
Bachelor of Music (Hons)
Tel 07903 994 049 or Email:
lympnekate@gmail.com

REFUSE COLLECTION DATES October 2024

Recycling (Purple Lid/Black
Box) and Food Waste will be
collected on: Tuesday 1st, 3rd
and 29th
Non-Recyclables (Green Lid)
and Food Waste will be
collected on: Tuesday 8th and
22th.
Garden Waste Collections 9th and
23rd.

*Please do not put the lid on the
Black Box—use the food waste
container or a heavy object.*

MEDITATION COURSES

More and more people are learning to use the skills of meditation and
their breathing as a way of supporting their health and wellbeing,
keeping their minds fit and regulating their nervous systems.

I invite you to join me on my next

Mindfulness Meditation Course

Commencing Saturday 5th October 2024

Ending Saturday 23rd November 2024

10.00am – 12.30pm for 8 Sessions

Location: The Committee Room, Lympne Village Hall

Alternatively, on a WEEKDAY EVENING

Commencing Thursday 3rd October 2024

Ending Thursday 21st November 2024

For more information and to book a place

Contact Ellen: 07740857109

Email: [ejgar-](mailto:ejgar-rard2712@gmail.com)

rard2712@gmail.com://

ellengarrard.co.uk/

