



DELIVERED TO
HOMES IN LYMPNE,
NEWINGREEN
COURT-AT-STREET
AND
WEST HYTHE ROAD

IN THIS MONTHS ISSUE
BECOME A DIGITAL CH
AMPION, SOLAR UPDATE, NEW
COUNCILLORS ANNOUNCED
AND MUCH MORE

D-Day Commemorations at Lympe Castle: A Tribute to Heroes



On the 6th of June, the community gathered at Lympe Castle for a poignant yet uplifting D-Day commemoration, marking the 80th anniversary of the Normandy landings. The event, steeped in history and reflection, brought together people of all ages to honor the brave souls who fought for freedom on that fateful day in 1944. Lympe Castle, with its historic charm and sweeping views, provided the perfect backdrop for this significant event. The atmosphere was a delicate balance of solemn remembrance and communal celebration, reflecting both the gravity of the occasion and the resilience of the human spirit.

One of the highlights of the day was an acrobatic display by a Spitfire, the iconic fighter aircraft that played a crucial role during World War II. As the Spitfire soared through the sky, performing daring maneuvers, it was a powerful reminder of the courage and skill of the pilots who took to the skies during the war. The crowd watched in awe, their faces lit with a mixture of reverence and admiration.

The commemorations were further enriched by heartfelt tributes led by St. Stephen's Church. Our Vicar, Barry, alongside the Chair of the Parish Council and children from Lympe School, read moving passages and reflections. Their words resonated deeply with the audience, providing a solemn moment of reflection and gratitude for the sacrifices made by so many.

Adding to the nostalgic atmosphere, students from Lympe School performed a medley of wartime songs. Their harmonious voices filled the air with classics that once provided comfort and hope during the dark days of conflict. The children's heartfelt performance was met with enthusiastic applause, highlighting the importance of passing down these historical memories to younger generations.

The D-Day commemoration at Lympe Castle was more than just a remembrance event; it was a celebration of community and shared history. Families, veterans, and local residents came together, creating a sense of unity and collective memory. The event also featured refreshments and historical exhibits, allowing attendees to engage with the past in a meaningful way.

As the event drew to a close, the sense of respect and gratitude was palpable. The community's efforts to honor the legacy of D-Day served as a poignant reminder of the sacrifices made for freedom and the enduring importance of remembering our history. The success of the commemoration at Lympe Castle ensured that the stories of bravery and resilience will continue to inspire future generations.

The D-Day commemorations at Lympe Castle were a fitting tribute to those who fought valiantly 80 years ago, reminding us all of the enduring spirit of courage and unity in the face of adversity.

**MEDIEVAL
TIMES**

**50% OFF GENERAL ADMISSION
TO ALL VILLAGERS OF LYMPNE**

Family Fun!

- *Minstrels
- *Jesters
- *Musicians
- *Face Painter
- *Magician
- *Hog Roast
- *Archery
- *Kids' Crafts

SCAN HERE FOR DATES & TICKETS
USE PROMO CODE
"KEY TO THE CASTLE"



KENT GARDENER

Last July's notes showed we were complaining 'too dry', now the complaint is 'too wet'. Gardeners are never happy, but the gardens are, with lush growth everywhere. Unfortunately slugs and snails which benefitted from a mild

winter love it too. Nematodes can be watered into the soil and barrier methods from sheep wool pellets to copper tape can be used but nothing really stops them. Bedding plants, roses and early perennials are going over so dead head them and cut back hardy geraniums, oriental poppies etc, even if there is some colour. Give them a feed and the foliage will spring back and there may even be some new flowers. Give houseplants a holiday and put them outside in a semi shaded position and take them in when the nights cool down. If the weather turns hot and holidays approach try to move the pots into a shadier position and put a saucer underneath to catch any runoff. Keep an eye on the vegetable patch, particularly leafy ones which are easily damaged and may run to seed. A good soak, rather than little and often is more beneficial except for main crop potatoes which I am told don't keep so well if watered in the 2 weeks before lifting. Protect with a plastic sheet if heavy rain is forecast. Check plants in peat free compost before watering, some dry out quickly at the surface while the bottom remains wet so may not need the extra drenching. On a sunny day spend a little time counting butterflies in the garden, see web site w.w.w.bigbutterflycount.org. It is a lovely pastime and helps their conservation. Happy Gardening.



SUMMER FAYRE/FUN DAY AT

THE VILLAGE HALL

Save the Date: Sunday
28th July 1pm to 5pm

Plans are well underway now. We will have food, drinks, ice creams, live entertainment for adults and children, plus many interesting stalls for you to explore.

Let us know if you'd be willing to help set up and/or take down the stalls by emailing chair@lympnevillagehall.co.uk. Another way you could get involved would be to make a cake for our cake stall, which raises funds for the village hall and playground. Just bring it down on the day.

On another note, our planters at the hall have been damaged, we assume by a car, so could we ask all hall users to please to take care in the car park.

Finally, as part of our planned maintenance schedule, the main hall is being redecorated during the summer, we apologise for any inconvenience caused. All hirers we identified as being affect by this have been notified.

LYMPNE VILLAGE HALL FILM CLUB

IN THE HARRY MARGARY HALL

Films will be shown every 4th Tuesday of the month (not December).

MAKE A DATE IN YOUR DIARY FOR THIS POPULAR VILLAGE EVENT. ALL PROFITS GO TO THE VILLAGE HALL FUND.



7.15 for a 7.30 start

FREE MEMBERSHIP



Entrance fee of £5.00 includes refreshments and lucky draw ticket.

Showing on 23rd July:

LAST CHANCE HARVEY

Things are not going well for Harvey.... Set in London, Dustin Hoffman and Emma Thompson star in a romantic comedy which celebrates new beginnings. The perfect pick-me-up.

27th August: Goodnight Mister Tom

Enjoy John Thaw's brilliant performance in this classic film about a deprived evacuee who is billeted with cantankerous Tom Oakley.



We reserve the right to show a substitute film should the need arise or to refuse admission. Children under 16 must be accompanied by an adult (ID will be requested).

TRIVIA NIGHT!

THURS
18TH JULY | 7PM to 9PM

A multi-round trivia competition for teams of up to 6 competing for a CASH PRIZE & MORE!

£2
per person



THE COUNTY MEMBERS,
LYMPNE CT21 4LH

CONTACT US TO
BOOK ON:
01303 847432



LYMPNE TABLE TENNIS CLUB

Lympne has a long standing table tennis club which meets every Wednesday afternoon between 2.30 and 4.30pm. We are a mature group who play competitive games, but do not participate in leagues. It is a friendly and social group. New members are welcome along to see if our club suits your needs. Serious play; friendly outcomes. Come along and see at Lympne village hall. Or further information is available from Paul on 07840 759549.

ST STEPHEN'S CHURCH LYMPNE'S FAVOURITE RECIPES

For the Millenium, Lympne produced its own recipe book "A Meal for All Seasons". Some of you may still have, and use, your copy. Well, that was 25 years ago! We now want to create an updated one, with new recipes for the latest cooking devices in our kitchens. We would love to include one of your favourites, be it a starter, main, dessert recipe, or to go with your morning coffee or afternoon cuppa, and whether for the oven, microwave or airfryer. Please send them in with your name, tel no. and email address to: Fiona Jarvest: fionajarvest22@gmail.com 36 Octavian Drive, CT21 4JG , or hand it in to the church, which is open during the day. Thank you. Fiona



NEWS FROM THE OTTERPOOL SOLAR FORUM

Following our presentation at the Annual Parish Meeting in May, we repeated the process with District Councillors Speakman and Wing, who missed the meeting, bringing them up-to date on our work relating to FHDC's Court at Street solar proposal and the alternative option of rooftop solar generation at Otterpool Park.

Cllr Jim Martin - the leader of FHDC - joined the latter part of the meeting with the councillors and informed us that there would be no further developments around the Court at Street solar proposal until November. We aim to use this time wisely.

A few days earlier, the government had issued a warning to local authorities advising them against the approval of solar schemes on arable land, better suited to food production. Cllr Martin was very dismissive of this action and it remains to be seen whether the next government follows suit, or not.

Note: if you would like to hear from us directly, please send your email address to: otterpoolso-larforum@gmail.com

PLEASE NOTE- ANY COMMENTS MADE IN THE ABOVE ARTICLE ARE THOSE OF THE OTTERPOOL SOLAR FORUM.

David Ian

FURNITURE & BEDS

REMOVAL SERVICE

LET US MOVE YOU

Providing Flexibility to make your move run smoothly for you

- Local, National & European Removals
- Home Office or Commercial
- House Clearance & Disposal Service Available
- Short Notice No Problem, Same Day Service Available
- Storage Facilities
- Full Packing Service Available
- No Job Too Small
- CALL THE EXPERTS



www.davidianfurniture.com

CALL NOW FOR A FREE QUOTE
01303 264052

Dymchurch Road | Hythe | Kent
Email: sales@davidianfurnitureltd.com



New parish councillors join the committee

Lympne Parish Council having exercised their Co-opting powers are please to announce two new members. Cllr Steve Bingham from Court-At-Street and Cllr Michael McAuley from Lympne Castle joined the Council on 12th of June. Both are welcomed and we look forward to their contribution to our community.

THE COUNTY MEMBERS

LUNCHTIME OFFER!

WED-SAT 12PM-4PM

KIDS UNDER 8 EAT FREE!

With a paying accompanying adult
Max 2 kids per adult

The County Members Lympne - CT21 4LH

MADE WITH IDB.ORG

other Kent Airfields. Other airfields include Challock, Manston and West Malling.

Our meetings start time is 7.30pm at Lympe Church. Admission £3 on the door.

This month my new book *Tales of Lympe Airfield Volume 2* is published. This new look at fascinating accounts of events connected with the Airfield is bigger than Volume 1 with more chapters and photographs.

Tales of Lympe Airfield Vol. 2

By John Simpson

Before I published the first volume of *Tales of Lympe Airfield* it was clear to me that there was more to come. Stories of what happened on the airfield keep coming to light and I take any opportunity I can to speak with anyone who comes forward with a tale to tell. As I continue to write a monthly article for the *Lympe Newsletter* and *Folkestone Herald* online, this is invariably added to as people contact me with more information. Once again these articles have been the basis of this book, added to and expanded in many cases. Some chapters are too long for the *Lympe Newsletter*, so have not been seen before. Some accounts offered to me are well connected with Lympe Airfield, others stories of people passing through, but of great general interest nonetheless.

The format of the book is such that the reader can pick out a chapter in isolation to read. Whilst they appear in chronological order of their happening, you can start anywhere you like. The first volume has been well received and the print run of 200 sold out in a matter of months, so has gone to a second edition. This has been updated for some of the chapters, as more information has come to light not known at the time.

Volume two commences in 1915 in the First World War. We then move through the years of aviation in war and peace to the final flights of the 1980's, and a tribute to one hundred years of the Belgian airline Sabena in 2023. Read about the credible plot to fly Hitler here against his will in 1941. Local men who were schoolboys at the time talk about war through their eyes in Lympe. Learn about the requisitioned properties big and small throughout the village. A Skyways pilot's logbooks reveal his many flights from Lympe and flying around the world including taking Princess Margaret around the Caribbean. There is air racing before and after the war and a detailed look at the later years after 1974 to 1986.

Thirty two chapters, over 130 photographs in colour and black & white, *TOLA 2* is being pre-ordered by book sellers now. Two years in the research and writing, *Tales of Lympe Airfield Volume 2* is now available. Contact John Simpson for your copy, who will be happy to deliver free of charge locally. Special price £10 (RRP £15.50 through book sellers).

Contact: John Simpson on 07508 708725 or email: johnsimpson43@btinternet.com for information

STUDYING HISTORY AND ARCHAEOLOGY IN LYMPNE

Our speaker in May and June was Cressida Williams, Archivist at Canterbury Cathedral, who gave a fascinating talk on the Magna Carta at Canterbury. Magna Carta, called the Great Charta, was a royal charter of liberty and political rights, some of which still apply today, obtained from King John of England by his rebellious barons at Runnymede near Windsor in 1215. The driving force

was the Archbishop of Canterbury, Stephen Langton, who made peace between the unpopular king and a group of rebel barons. Langton was the architect of the Magna Carta, sealed but not signed by King John, who died in 1216. The main Charta is in Salisbury Cathedral with one in Lincoln Cathedral and copies in the British Library and a version in Canterbury as the original copy is now illegible from damage by fire. Langton died after 20 years, as Archbishop, including allying himself with Thomas Becket. He is buried in a tomb under the altar in one of Canterbury's chapels.

Our June Tuesday meeting June at 7.30pm was a graphic talk by Colin Varrall on the history and development of the Kent Coalfield, from its origin in the 1880s Channel Tunnel excavations to Kent's closure in 1986. The pattern was one of entrepreneurs buying mineral rights to mine and then closing down a few years later due to going into receivership, lack of finance and insufficient coal output from the seams. Colin's grandfather and father both worked in the mines who saw the emergence of Shakespeare Colliery, followed by Guilford, Waldershare, and Tilmanstone. In the 1920s/30s more mines were opened such as those at Snowdown near Aylesford, Betteshanger, which finally closed in 1989, Lydden, Wingham and Woodnesborough. Colin referred to families settling in Kent from collieries in Yorkshire and other areas, the various disputes of workers with the owners, and illustrated the working conditions underground which resulted in the various health problems of miners from which they suffered in their retirement.

We welcome Imogen Corrigan at our next meeting on Tuesday 16th July at 7.30pm in the Harry Margary Hall at which she will speak on 'A Child's life in the Middle Ages'. Non-members are welcome.



St Stephen's Church

Services in JULY

7th July Parish Communion	11am
14th July Family Service	11am
21st July Parish Communion	11am
28th July Parish Communion	11am

ECO Volunteers meet in the churchyard on the following dates at 10am (if not raining!)
6th, 9th, 13th, 16th, 20th, 23rd, 27th and 30th July



Sunday Club (ages 3-10)
Meet 10-11am Lads' club

Contact Christine Clover:

Call 0300 030 1662 or text 07379 877846

christineclover@lympneandsaltwoodchurches.uk



Come and join us at Lympne & Saltwood Toddlers
10 - 11:30am

Thursday mornings in the Harry Margary Hall,
Aldington Road, Lympne



ST STEPHEN'S CHURCH, LYMPNE CHURCHYARD WILDLIFE FESTIVAL

SATURDAY 20 JULY 2024 11.00am -
4.00pm **£1 on the gate**

Bring a homemade insect /animal /bird /
flower /Plant

To display in the churchyard
(so make it as **BIG** as you like)

Prizes for the winners

Children's activities; Bug Hunt, Wildlife related Crafts & stalls; Local Wildlife Slideshow; Raffle, Bottle Tombola; Refreshments and more!



At DUSK join us for a
bat walk in the
churchyard

9.30 PM

**STOUT SHOES
RECOMMENDED
BRING A TORCH**

LYMPNE FELLOWSHIP : It was a delight at our June meeting to welcome Emma, who gave us a lovely, informative talk about Home Farm Trust, their title now being HFT: Learning Disability Allies. HFT supports people with learning disabilities to live with more independence and choice across South Kent, including Lympne, Hythe, Folkestone and Hawkinge, as well as across the country. It was very clear that Emma is genuinely dedicated to her job as Manager and has great affection for the residents and is full of praise for the hardworking staff. There are plans to improve bonds with the community and raise the profile of HFT in Lympne. HFT receives no government funding and is entirely reliant upon charitable donations. We meet at 1.15pm in the Harry Margary Hall on the 2nd Thursday of the month, with a programme of interesting and informative talks and activities. Please contact Jill Page on 07846 819693 for information

RECREATION GROUND FOOTPATH ROUTE BROUGHT BACK TO FORMER GLORY BY COMMUNITY VOLUNTEERS

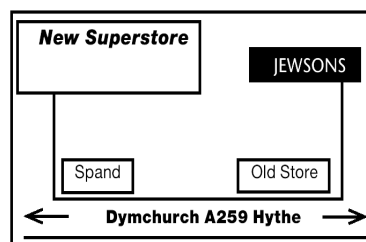
Thanks to Charlotte East, who is a volunteer at the Shorncliffe Napier Barracks, arranged to engage several people to assist in cutting back the overgrowing vegetation on the circular footpath at the recreation ground. This was part of a programme run by the centre in Folkestone to encourage work to be carried out on a voluntary basis in the local community.



Dymchurch Road, Hythe, Kent

01303 264052

Email: sales@davidianfurnitureltd.com



**REMOVAL AND STORAGE
CALL NOW FOR A FREE QUOTE**
*TERMS & CONDITIONS APPLY

OPEN 6 DAYS A WEEK
Mon - Fri 9am - 5.30pm Sat 9am - 5pm



**TRADING
STANDARDS**

APPROVED

working in partnership with
Checkatrade

**10%
Discount
for
Lympne
Residents
at**



**LYMPNE
PARISH COUNCIL
CONTACT
DETAILS**

If you have any queries regarding local issues, or any other matters you wish to raise, you can contact Lympne Parish Councillors
Current Members
Chair Mike Boor
Vice Chair Anne Beales

Claire Yates
Michael Potter
Judith East
Michael McAuley
Steve Bingham
Correspondence should be sent to the Parish Clerk **Jeff Lawrence**
29 Honeywood Close
Lympne
Tel: 01303 883 228
e-mail: clerk@lympneparishcouncil.gov.uk

**JOIN US AS A DIGITAL CHAMPION:
EMPOWER YOUR COMMUNITY WITH
ESSENTIAL IT SKILLS!**

Are you proficient with IT skills? Do you want to make a significant difference in your community? We seek enthusiastic volunteers to help bridge the digital divide and support members of our community in accessing essential online services.

WHY YOUR HELP IS NEEDED

In today's digital age, navigating the internet is crucial for accessing a wide range of services. Many individuals in our community face challenges in: E-consultations: Accessing online medical consultations and advice. Repeat Prescriptions: Ordering medication through digital platforms. Health Services: Navigating online health resources and support. Council Services: Utilizing local government services and information. Your skills can help others live more independently and with greater confidence in the digital world.

WHAT WE OFFER

The NHS Digital Inclusion team will provide comprehensive training covering: Confidentiality: Understanding and maintaining privacy in all interactions. Data Protection: Adhering to legal standards for handling personal information. Safeguarding: Ensuring the safety and wellbeing of all individuals you assist.

BECOME A DIGITAL CHAMPION

Once trained, you will become a valued Digital Champion, helping others to: Gain confidence in using computers and the internet. Access critical health and council services online. Improve their quality of life through digital literacy.

HOW TO GET INVOLVED If you have a passion for IT and a desire to help others, we would love to hear from you! By volunteering your time and expertise, you can make a lasting difference in our community.

Contact the Parish Clerk to learn more and sign up for our training program:

Together, we can create a more inclusive digital community. Join us in this rewarding initiative and become a Digital Champion today!

Thank you for your commitment to making a positive impact. We look forward to working with you to support our community.

squiggle

WILLS

TRUSTS

POWER OF
ATTORNEY

PROBATE

Death isn't something most of us want to talk about or think about. And why would we? But what we DO want is for our loved ones to be looked after when we're gone.

And yet, nearly half of us don't have a will or even a plan for our estate when we die. It's something many just don't get round to - despite knowing that we should.

Book your free consultation with Squiggle today.

01233 659796

www.squiggleconsult.co.uk

Squiggle Consult Ltd
11 Park Barn, Evegate Business Park, Mersham, TN25 6SX
Registered Company - 10816512



Private HomeCare
Specialists in 1-to-1 home care
of elderly and vulnerable people

- Medication
- Personal Care
- Security Checks
- Outings
- Domestic
- Wake / Sleep Nights
- Live in

Disability Cars for
our clients
available 24 hours
a day



Office at 7 Great Conduit Street, Hythe

☎ **01303 847422**

☎ **0756 3636 332**

✉ privatehomecarekent@gmail.com

🌐 Privatehomecare.co.uk

LOCAL



Studio J
Hair Salon
A family business
in the heart of
Lympne.

20% OFF FOR NEW CLIENTS
ON 1ST VISIT.

Call us on 01303 267877,
text 07833 031717 or find us on
instagram @studio_j_hair_lympne.



07745 532075

Mobile Foot Health Practitioners.
Treating and managing foot and nail
conditions, corns, callus, fungal,
fingernails, diabetic foot care
www.eastkentfootcare.co.uk

ASHTON TREE CARE

Hedge cutting , stump grinding ,
tree surgery
All work fully insured
Contact 07929 627 622
ashtontreecare@gmail.com

PLUMBER

City & Guilds qualified
Affordable, Reliable and Local
All work fully insured and
guaranteed. Wide range of hot
and cold water services. See
website for further details,
rates and customer feedback.
Call now on 07899 034 695
for a no-obligation, free quote
or visit our website:
www.condicoplumbing.co.uk

NUMERACY OR LITERACY SUPPORT

Would a young person you
know benefit from additional
numeracy and/or
literacy support?
I am a qualified and
experienced SEN teacher
with 20 years experience
I have a limited number of 1:1/
small group sessions available
Sessions from £12.50p/h
Contact Bea 07412 808 098

LYMPNE PARISH COUNCIL CANNOT ACCEPT RESPONSIBILITY FOR THE ACCURACY OF ANY
OF THE DETAILS ADVERTISED. YOU ARE STRONGLY RECOMMENDED TO TAKE
APPROPRIATE ADVICE BEFORE ENTERING INTO ANY COMMITMENT.

VILLAGE HALL BOOKINGS VISIT

[http://
www.lympnevillagehall.co.uk/
bookings/](http://www.lympnevillagehall.co.uk/bookings/)



ACC ELECTRICAL

Fuse board changes,
cctv,alarms, PAT
testing, smoke alarms,landlord safety
checks,
security,lighting,rewires, smoke
detectors and much more!
Free Quotations and friendly
reliable service
01303 211 011/07595336880
info@accelectrical.co.uk
www.accelectrical.co.uk

WRAIGHT'S MOWERS

NEWINGREEN (A20)
Servicing,Repairs,Sharpening
Spares and Sales
all makes of petrol & electric mowers.
Benham Water Farm,
Ashford Road (A20)
Newingreen, CT214JD
Opposite old race course
Tel 07733293315

TAXI IN THE VILLAGE.

Short, long or any distance.
Airport, docks, etc.
Ask for a quote.
Speak to Geoff
Phone 07703 444 814

DN PLASTERING SERVICES

Local, Trustworthy & Reliable
Over 25 Years Experience
Call Darren 07932 002 442
dnplasteringservices@gmail.com

CURTAINS

Handmade
curtains,blinds and soft furnishings.
Curtain alterations.
Call Valery Wren
01303 237 755

THE EXECUTIVES SUITE

Virtual Support Service
Remotely supporting time limited
business owners
with administrative tasks.
Travel, diary management,
inbox detox & lifestyle
management.
Contact Natalie Dowsett at
natalie@theexecutivessuite.co.uk

CATHERINE'S CLEANING

Over 4 years Cleaning Experience
Regular Cleans
Spring Cleans
Serving Lympne,Hythe
and surrounding areas.
DBS checked, references on request.
Call or message Catherine on:
07957991266
Email: flower.powercat@hotmail.co.uk

SPOTLIGHT PEST CONTROL SERVICES LTD

British Pest Control
Association member.
General pest control including rats,
mice, moles, wasps, ants, fleas,
bird spikes and general proofing
Fast, friendly and
reliable.
Contact Dave on 07715211899.
info@spotlightpestcontrolkent.co.uk
www.spotlightpestcontrolkent.co.uk



I'm Michelle, local
branch owner for
Sales and Lettings
for The Good
Estate Agent.
We are a 13 year old
family run,
Nationwide business, with our Head
Office in Lympne.
I take pride in my high quality
customer service and my doors
don't close at 5pm!
For a Free Sales or Lettings
valuation please call 07848015443
or email
michelleferbrache@thegood.co.uk

Kingdom

CARPET CO.

- Carpets Supplied & Fitted
- Carpets Professionally Cleaned
- Carpets Whip Edged & Cotton Bound

Whatever your carpet need, give us a call for a
FREE estimate / assessment.

Over 50 years combined experience.

07943 764 442

Email: kingdom.carpet.co@gmail.com

LOCAL TRADES



CN ELECTRICAL

DOMESTIC &
RESIDENTIAL

New Sockets, Fault Finding,
Rewires, Lighting,
Consumer units and much more!
NICEIC REGISTERED ELECTRICIAN

Contact Chris
Mob : 07826 505671
www.cnelectrical.co.uk
info@cnelectrical.co.uk

DILTON MINI SKIP HIRE
Ballast, hardcore, sand,
topsoil supplied. Registered waste
carrier.

Phone 01303 812 448, or
Mobile 07799 433 754



PILATES

Join Sharon in
Tuesday mornings
at Lympne Small
Hall for a weekly
Pilates session.
Small friendly
group

Starting 2/7/24

Contact Sharon 07890 563023

RICHARD AJ THOMPSON LTD
Plumbing & heating engineer
Gas Safe Registered-No 513449,
22 years experience.
Central heating boiler servicing,
repairs and installations.
All domestic plumbing repairs,
Water softeners, gas fires, cookers
and water heaters.
Landlord's Safety Certificates.
Tel 01303 266 273
Mob 07540 333 250

HANDYMAN AND BUILDING MAINTENANCE

Roofing, Guttering,
Plumbing, Drains,
Painting, Decorating,
Plastering
Free Estimates
References available

Contact 07836 665382

PAINTING, DECORATING & HANDYMAN

Interior and Exterior – All types
undertaken. FREE ESTIMATES.
30 YEARS EXPERIENCE
Call Mick Cockburn
Mobile 07769 221 871

LYMPNE VILLAGE STORES AND POST OFFICE

OPEN from 830-530 weekdays
Saturday 830-2pm
Sundays CLOSED

Visit us for your everyday needs
Milk, bread, eggs and your daily
newspaper or magazine and the
National Lottery.

MUTTS APPRECIATED

Professional Dog Grooming Services
Based in Newingreen
Fully qualified and insured
All breeds welcome
Tel: 07927335947
Instagram: @muttsappreciated

EX-JOB AND DOGS

Retired local police officer offering
Dog Walking, Dog Day Care
Boarding in Home Environment
Home Watch Service Long/short term
Including Cat Care
Contact Kerry
with your requirements
CONTACT 07791 095 895
exjob17@gmail.com

THE BOWEN TECHNIQUE
BOWEN THERAPY IN LYMPNE
Back pain, arthritic pain, asthma,
digestive disorders, migraine,
practically any problem can
potentially be addressed.
Lynne Rodgers, Cert ECBS.
Call 01303 268 910 or
lynnealexrodgers@gmail.com

PIANO LESSONS

Enjoy learning the piano with an
experienced teacher in a pleasant
home near Lympne Primary
School. Children and adults of all
abilities welcome. It's never too
late to start - just bring your fingers
and a love of music!
Contact Kate Chesterman,
Bachelor of Music (Hons)
Tel 07903 994 049 or Email:
lympnekate@gmail.com

REFUSE COLLECTION DATES

JULY 2024

Recycling (Purple Lid/Black
Box) and Food Waste will be
collected on: Tuesday 9th and
23th

Non-Recyclables (Green Lid)
and Food Waste will be
collected on: Tuesday 2nd and
16th and 30th.

Garden Waste Collections 3rd and
17th.

*Please do not put the lid on the
Black Box—use the food waste
container or a heavy object.*

MEDITATION COURSES

More and more people are learning to use the skills of meditation and
their breathing as a way of supporting their health and wellbeing,
keeping their minds fit and regulating their nervous systems.

I invite you to join me on my next

Mindfulness Meditation Course

Commencing Saturday 5th October 2024

Ending Saturday 23rd November 2024

10.00am – 12.30pm for 8 Sessions

Location: The Committee Room, Lympne Village Hall

Alternatively, on a WEEKDAY EVENING

Commencing Thursday 3rd October 2024

Ending Thursday 21st November 2024

For more information and to book a place

Contact Ellen: 07740857109

Email: [ejgar-](mailto:ejgar-rard2712@gmail.com)

rard2712@gmail.com://

ellengarrard.co.uk/

