



## LYMPNE CASTLE HOSTS SUCCESSFUL PARISH MEETING

Lympne Castle provided a stunning backdrop for the May Parish Meeting, where over 80 local residents gathered to discuss pressing community issues. The Parish Council expressed their gratitude to the castle's owners for graciously hosting the event, which saw lively and productive discussions on a variety of topics.

The meeting commenced with the chair's review of the past year, highlighting the achievements and ongoing efforts of the Parish Council. Attendees were particularly interested in the council's plans for the future, showing strong engagement and support for the council's initiatives.

A portion of the evening was dedicated to a presentation from RACE (Rural and community Housing enabling service enabling). An initiative, which provides expertise working directly with communities to deliver housing which matches local needs. The audience responded positively, indicating their approval for the Parish Council to pursue this initiative further.

The controversial discussion of the night centered on the proposed Solar Farm at Court-At-Street. Sir Christopher Edwards and Derek Burles passionately argued against the location of the project, citing concerns about the loss of valuable agricultural land. They also suggested alternative energy production methods, emphasizing the need for more suitable sites. No supporters of the solar farm project were present at the meeting, highlighting a community consensus against the proposed location.

Concerns were raised about the lack of initiatives to install solar panels on new buildings and commercial premises instead. Residents were encouraged to voice their opinions by writing to District Councillor Jeremy Speakman, whose contact details are available on page 6 of the parish newsletter. **Those interested in receiving updates on the solar farm issue can send their email addresses to [otterpoolsolarforum@gmail.com](mailto:otterpoolsolarforum@gmail.com). Additionally, a fact sheet is available from the Parish Clerk, with further details to be posted on the Parish Council's website and notice boards.**

The event concluded on a high note, with many attendees expressing their appreciation for the opportunity to engage with community matters in such an inspiring setting. The Parish Council hopes that this level of attendance and enthusiasm will continue in future meetings, fostering a stronger, more connected community.

### Asian Hornet Alert

Asian Hornet has been recorded in Lympne area.

See Page 6 for information

Traps are being made available through Lympne Church



### Lympne Castle welcomes the public for a community event in celebration of D-Day

6th JUNE  
2024  
17:00

- Fish and Chips Picnic (In celebration of National Fish & Chips Day)
- Drinks available from the Medieval Bar
- Commemorative Address by Rev. Barry
- Poems and songs presented by the children of Lympne Primary School
- Fly by of a Spitfire MkIX
- Lighting of the Beacon



## KENT GARDENER

Hello gardeners. Another month has flown by and we will soon be celebrating the longest day. Although the sun has been absent, our gardens are loving the mild, wet weather. To keep them really colourful weeding, dead heading and tying in should be done little and often and saves precious time for planting out tender vegetables and sowing more cut and come salad crops. Remove any yellowing leaves from bulbs that are dying down. Watch the weather forecasts and make sure taller plants and climbers are secure if a storm is forecast. By cutting back early perennials like primulas, oriental poppies or aquilegia and giving them a feed, new leaves will emerge to fill the space but may not flower until next year. Save water by standing pots on saucers to catch runoff after watering. Keep bird baths clean and topped up, birds need to drink and splash to clean their feathers and are a delight to watch. Insects also need water in dry weather and a small stone in the container will help them reach it without floundering. Flower shows are in full swing now and are a great inspiration to improve your garden. If you are tempted to buy, look out for those that have bee-friendly flowers, a single row of petals, trumpets or large flat heads to land on easily. Hedgehogs have almost disappeared from our gardens now, so if your garden is completely enclosed why not make a small opening about 15cm x 15cm low down so the hedgehog has a path to the next garden. They can range about a mile each night! Happy Gardening.



## Open Garden

Five Farthings,  
Aldington Road, CT21 4LH  
Sunday 30th June  
2pm till 4pm  
All proceeds going to:-  
**Lympne Over 50's  
Lunch Club**

Entrance..£4. to include tea/coffee and cake  
Anyone interested in joining our friendly group  
please contact Margaret...phone no. 01303 269557  
email....[Lympnelunchclub@gmail.com](mailto:Lympnelunchclub@gmail.com)

## Lympne Village Hall Summer Fayre 28th July 2024



Plans are well under way for our summer fayre. The stalls are getting booked up so, if you're thinking of running one, best to book it now. We have food and drink, a live band and a childrens' entertainer. All we need is the weather!  
If anyone in the village would like to donate a cake for our cake stall it would be much appreciated. Let us know if you're able to help ([events@lympnevillagehall.co.uk](mailto:events@lympnevillagehall.co.uk)).



## BOX MOTH CATERPILAR INVASION

### How to restore your box hedge

The box moth caterpillar has been destroying

many hedges in Lympne. They strip the leaves from the hedge leaving it looking awful.

The picture shows what they look like. They have no predators in the UK. Birds and spiders don't eat them which is why they can destroy hedges. The moth is a white colour with brownish grey edges.

Last year I sprayed hedges twice with a bird and bee safe product called Xentari - and my hedges recovered. Before spraying most of the hedge had no green leaves left - and they recovered. This year at first signs of the leaves being eaten I sprayed and the hedge has stayed green.

This product is widely available and is a specific biological insecticide that only affects this caterpillar and not other insects.

From Rachel Corniche

the COUNTY MEMBERS

# OPEN MIC NIGHT

THURS JUNE  
13TH  
7PM - LATE

WITH SUPPORT FROM  
'SGW'

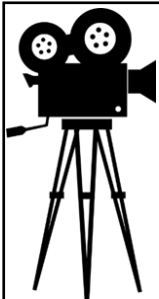


FOR  
MORE  
INFORMATION

CALL:  
01303847432

**RUNNING  
EVERY  
MONTH**

instagram:  
[the-county-members\\_](https://www.instagram.com/the-county-members)



## LYMPNE VILLAGE HALL

### FILM CLUB

IN THE HARRY MARGARY HALL

Films will be shown every 4<sup>th</sup> Tuesday of the month (not December).

**MAKE A DATE IN YOUR DIARY FOR THIS POPULAR VILLAGE EVENT. ALL PROFITS GO TO THE VILLAGE HALL FUND.**

7.15 for a 7.30 start

**FREE MEMBERSHIP**

Entrance fee of £5.00 includes refreshments and lucky draw ticket.

Showing on **25th June**

## NORTH BY NORTHWEST

The Hitchcock classic adventure starring Cary Grant. Enjoy the famous crop-spraying scene and the exciting action on Mt Rushmore!

July 23<sup>rd</sup> - **LAST CHANCE HARVEY**

*Dustin Hoffman and Emma Thompson in a romantic comedy that will leave you smiling.*

We reserve the right to show a substitute film should the need arise or to refuse admission. Children under 16 MUST be accompanied by an adult (ID will be requested).



## BEWARE PARKING FINES

A resident has asked me to warn people who may not be aware of the parking restrictions at Oaklands which serves the Library and the Doctors Surgery.

The resident was just 57 seconds late and received a fine of £70 (which was reduced with an early payment)

There are signs in place but this may not be common knowledge- Thank you.

## LYMPNE OVER 50s LUNCH CLUB

Looking for a new interest and companionship?

Join our friendly social group for a chat over a hot meal, dessert and tea or coffee with fun activities, bingo or quizzes.

Taking place at the Harry Margary Hall on the 2<sup>nd</sup> Friday of each month Cost £8.50. Booking the meal is essential at least the day before. Contact Margaret on 01303 269557. Transport available, if necessary, within Lympne Village

**LYMPNE FELLOWSHIP** In May, 24 of us thoroughly enjoyed our annual lunch, this year at the Walnut Tree in Aldington. The food was good, the service was good, the staff were friendly and helpful, and I think we all agreed it was well worth re-visiting in the future. Our thanks go to all the staff involved!

We meet at 1.15pm in the Harry Margary Hall on the 2nd Thursday of each month, featuring a variety of talks and activities. For more information, contact Jill Page on 07846 819693.

# David Ian

FURNITURE & BEDS

## REMOVAL SERVICE

## LET US MOVE YOU

Providing Flexibility to make your move run smoothly for you

- Local, National & European Removals
- Home Office or Commercial
- House Clearance & Disposal Service Available
- Short Notice No Problem, Same Day Service Available
- Storage Facilities
- Full Packing Service Available
- No Job Too Small
- **CALL THE EXPERTS**



[www.davidianfurniture.com](http://www.davidianfurniture.com)

CALL NOW FOR A FREE QUOTE  
**01303 264052**

Dymchurch Road | Hythe | Kent  
Email: [sales@davidianfurnitureltd.com](mailto:sales@davidianfurnitureltd.com)



## TRIVIA NIGHT!

**THURS 6TH JUNE | 7PM to 9PM**

A multi-round trivia competition for teams of up to 6 competing for a CASH PRIZE & MORE!

**£2**  
per person



THE COUNTY MEMBERS,  
LYMPNE CT21 4LH

CONTACT US TO  
BOOK ON:  
01303 847432

## LYMPNE AIRFIELD HISTORY SOCIETY

Our May presentation was by John Simpson who took us through a *Who's Who* of over 100 Famous Names Connected with Lympne Airfield. Our July 2<sup>nd</sup> presentation is by David Goldsmith as he takes us through **Gliding at Lympne and other Kent Airfields**.

Our meetings start time is 7.30pm at Lympne Church. Admission £3 on the door.

This month we look at the sad demise of French pilot Alexis Maneyrol who lost his life at the 1923 Lympne Trials witnessed by the future King George V1.



### The Lympne Trials Claims the Life of Alexis Maneyrol By John Simpson

Born in Frossay in the Loire-Atlantique department in 1891, Alexis Maneyrol was a French aviation pioneer. Awarded licence number 673 on the 10<sup>th</sup> November 1911, he saw active service in WW1 in the French Army as a pilot of Morane Saulnier aircraft, going on to be a test pilot for the same company later in the war. He would go on to win aviation awards after the war in France following in the footsteps of fellow countrymen, Bleriot and Paulhan before him. He would be tempted to come to England to compete at Lympne.

On the final day of the first Lympne Trials, October 13<sup>th</sup> 1923, Alexis Maneyrol was making his second attempt at the competitions altitude record. His first attempt had achieved 2938 metres. Determined to beat his personal best height of 3400 metres and a ceiling of 4000 metres, Maneyrol took to the sky again that Saturday afternoon. Sure he had achieved his goal, presumably elated, he flew over the crowd, but about fifty feet from the ground the Peyret monoplane folded like an umbrella, spun two or three times and plummeted to the ground with a thud. The crowd was audibly shocked and looked on in horror. With both legs broken, and other multiple fractures, Maneyrol lay face down dying. A doctor was quickly in attendance, but to no avail, it was hopeless. His body was taken into the hospital room at the airfield.

The barograph was recovered from the wreckage and despite it showing a winning height of 4200 metres, he was never awarded the record he'd achieved that afternoon. The planned banquet to conclude the event that evening was cancelled as a mark of respect.

His home town of Frossay had a memorial erected to his memory in 1924 which was funded by public subscription, reaching over 16,000 Francs by June of the same year. His memory is commemorated every year to this day in Frossay.

Contact: John Simpson on 07508 708725 or email: [johnsimpson43@btinternet.com](mailto:johnsimpson43@btinternet.com) for information



## ST STEPHEN'S CHURCH, LYMPNE



### CHURCHYARD WILDLIFE FESTIVAL

SATURDAY 20 JULY 2024 11.00AM - 4.00PM £1 ON THE GATE



BRING A HOMEMADE INSECT / ANIMAL / BIRD / FLOWER / PLANT

TO DISPLAY IN THE CHURCHYARD  
(SO MAKE IT AS **BIG** AS YOU LIKE)

**PRIZES FOR THE WINNERS**

*Children's activities; Wildlife related stalls; Slideshow; Raffle; Refreshments AND  
MORE*

*TO BE CONFIRMED: EVENING BAT WALK  
MORE TO FOLLOW IN THE NEXT ISSUE.*

FOR FURTHER INFORMATION: EMAIL [fionajarvest22@gmail.com](mailto:fionajarvest22@gmail.com) or ring 07919 146158

## St Stephen's Church



**Services  
Sundays at 11am**

- 2nd June - Holy Communion
- 9th June - Hooba Family Service
- 16th June - Holy Communion
- 23rd June - Holy Communion
- 30th June - Joint service, 10am at Saltwood
- 7th July - Holy Communion

**For Families & Children:**



**Bubble Church** (for babies, toddlers & young families). Sunday 9:45am Lads' Club, Saltwood  
Next dates: 2nd June & 7th July

**Sunday Club** (ages 3-10)  
Meet 10-11am Lads' club



Contact Christine Clover:  
Call 0300 030 1662 or text 07379 877846  
E: [christineclover@lympneandsaltwoodchurches.uk](mailto:christineclover@lympneandsaltwoodchurches.uk)



COME AND JOIN US AT  
LYMPNE & SALTWOOD  
TODDLERS  
10 - 11:30AM  
THURSDAY MORNINGS IN  
THE HARRY MARGARY  
HALL,  
ALDINGTON ROAD,  
LYMPNE CT21 4LE

**PEWS FOR SALE - LAST CHANCE-£250 each**

**St Stephen's Church, Lympne**

We still have a few pews available (in the **Nave of the Church**) if you wish to purchase one, but they will be gone by the end of June! These pews are **SOLID PINE**, measuring approximately:

**Length 104" / 264cm** incl the seat support pegs jutting out at each end; **Height 32" / 81cm; Depth 20" / 51cm** including seat, back and back-shelf.

The pews currently up against the wall of the nave also have one side panel.

**The church is open during the day if you wish to view.**

**Buyer to collect on dates to be agreed from Monday 17 June. We regret we are unable to deliver.**

**DEPOSIT OF £50 SECURES YOUR PEW WITH FULL PAYMENT OF £250 BY 17 JUNE.**

**Cash** to be handed to a member of the PCC;

**Cheque** made out to **Lympne PCC; Bank Transfer:**

<b>Bank:</b>	<b>Santander</b>
<b>Sort code:</b>	<b>09-01-54</b>
<b>Account No:</b>	<b>0 6 5 6 6 0 8 9</b>
<b>Account Name:</b>	<b>Lympne PCC</b>
<b>Reference:</b>	<b>Pews (and your name)</b>

Please contact Fiona Jarvest [fionajarvest1@gmail.com](mailto:fionajarvest1@gmail.com) or 07919 146158 to secure your pew or for further information.



## COFFEE MORNING STEPHENS CHURCH

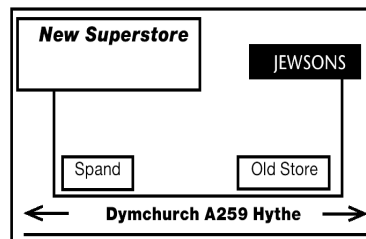
SATURDAY 18 MAY 2024  
10.30am - 12.30pm

*Join us for coffee, cake & savoury bakes  
Take a break from that walk  
(Well-behaved dogs welcome)  
Catch up with old friends and new  
Sing along to Richard on the piano  
Proceeds for church maintenance plus a  
donation to this month's nominated charity:  
**HYPHE DEMENTIA  
AWARENESS FORUM***

# David Ian

FURNITURE & BEDS  
SUPERSTORE

Dymchurch Road, Hythe, Kent  
**01303 264052**  
Email: [sales@davidianfurnitureltd.com](mailto:sales@davidianfurnitureltd.com)



**REMOVAL AND STORAGE  
CALL NOW FOR A FREE QUOTE**  
\*TERMS & CONDITIONS APPLY

**OPEN 6 DAYS A WEEK**  
Mon - Fri 9am - 5.30pm Sat 9am - 5pm



**TRADING  
STANDARDS**

**APPROVED**

working in partnership with  
**Checkatrade**

**10%  
Discount  
for  
Lympne  
Residents  
at**

**David Ian**  
FURNITURE & BEDS  
SUPERSTORE

**LYMPNE  
PARISH COUNCIL  
CONTACT  
DETAILS**

If you have any queries regarding local issues, or any other matters you wish to raise, you can contact Lympne Parish Councillors  
**Current Members**  
**Chair Mike Boor**  
**ViceChair Anne Beales**

**Claire Yates**  
**Michael Potter**  
**Judith East**

Correspondence should be sent to the Parish Clerk **Jeff Lawrence**  
**29 Honeywood Close**  
**Lympne**  
**Tel: 01303 883 228**  
**e-mail: clerk@lympneparishcouncil.gov.uk**

**ASIAN HORNETS FOUND IN LYMPNE**

An Asian hornet was captured somewhere in Lympne on 10th May (according to government confirmed sightings). Another has been seen around Lympne church but not caught/photographed so not added to the official list. The Asian hornet is a non native species that kills entire hives of honey bees and has a huge impact on other pollinators. It looks mostly black and is much larger than most bees or wasps.



Last year lots of nests were found in the Folkestone area and there is a big campaign there to eradicate these invasive non native hornets. Best way is to trap the queens before they can build new nests. Or later on to trap and then the National Bee Unit can track them back to their nests.

Local beekeepers in the Ashford-Lympne area have mass-produced hornet traps that can be attached to old glass pickle jars and left in gardens or areas of land to trap hornets. We have been offered a large number of these traps for anyone in Lympne or further away to take and use.

Some of these traps will be available at Lympne church - so if you can use any, please take some. If any hornets are caught in your trap, qualified beekeepers will come and remove them.

<https://catch.asianhornetalert.org.uk/map> shows local sightings and you can register to be a watcher / monitor and help preserve our honey bees. To be successful this needs lots of community volunteers

*squiggle*

WILLS

TRUSTS

POWER OF  
ATTORNEY

PROBATE

Death isn't something most of us want to talk about or think about. And why would we? But what we DO want is for our loved ones to be looked after when we're gone.

And yet, nearly half of us don't have a will or even a plan for our estate when we die. It's something many just don't get round to - despite knowing that we should.

Book your free consultation with Squiggle today.

01233 659796

[www.squiggleconsult.co.uk](http://www.squiggleconsult.co.uk)

Squiggle Consult Ltd  
11 Park Barn, Evegate Business Park, Mersham, TN25 6SX  
Registered Company - 10816512



**PrivateHomeCare**  
Specialists in 1-to-1 home care  
of elderly and vulnerable people

- Medication
- Personal Care
- Security Checks
- Outings
- Domestic
- Wake / Sleep Nights
- Live in

Disability Cars for our clients available 24 hours a day



Office at 7 Great Conduit Street, Hythe

☎ **01303 847422**

☎ **0756 3636 332**

✉ [privatehomecarekent@gmail.com](mailto:privatehomecarekent@gmail.com)

🌐 [Privatehomecare.co.uk](http://Privatehomecare.co.uk)

**REFUSE COLLECTION DATES JUNE 2024**

**Recycling (Purple Lid/Black Box) and Food Waste will be collected on: Tuesday 11th and 25th**

**Non-Recyclables (Green Lid) and Food Waste will be collected on: Tuesday 4th and 18th .**

**Garden Waste Collections 5th and 19th.**

*Please do not put the lid on the Black Box—use the food waste container or a heavy object.*

# LOCAL



Studio J  
Hair Salon  
A family business  
in the heart of  
Lympne.

20% OFF FOR NEW CLIENTS  
ON 1ST VISIT.

Call us on 01303 267877,  
text 07833 031717 or find us on  
instagram @studio\_j\_hair\_lympne.



**07745 532075**

Mobile Foot Health Practitioners.  
Treating and managing foot and nail  
conditions, corns, callus, fungal,  
fingernails, diabetic foot care  
[www.eastkentfootcare.co.uk](http://www.eastkentfootcare.co.uk)

## ASHTON TREE CARE

Hedge cutting , stump grinding ,  
tree surgery  
All work fully insured  
Contact 07929 627 622  
[ashtontreecare@gmail.com](mailto:ashtontreecare@gmail.com)

## PLUMBER

City & Guilds qualified  
Affordable, Reliable and Local  
All work fully insured and  
guaranteed. Wide range of hot  
and cold water services. See  
website for further details,  
rates and customer feedback.  
Call now on 07899 034 695  
for a no-obligation, free quote  
or visit our website:  
[www.condicoplumbing.co.uk](http://www.condicoplumbing.co.uk)

## NUMERACY OR LITERACY SUPPORT

Would a young person you  
know benefit from additional  
numeracy and/or  
literacy support?  
I am a qualified and  
experienced SEN teacher  
with 20 years experience  
I have a limited number of 1:1/  
small group sessions available  
Sessions from £12.50p/h  
Contact Bea 07412 808 098

LYMPNE PARISH COUNCIL CANNOT ACCEPT RESPONSIBILITY FOR THE ACCURACY OF ANY  
OF THE DETAILS ADVERTISED. YOU ARE STRONGLY RECOMMENDED TO TAKE  
APPROPRIATE ADVICE BEFORE ENTERING INTO ANY COMMITMENT.

**VILLAGE HALL BOOKINGS  
VISIT**  
[http://  
www.lympnevillagehall.co.uk/  
bookings/](http://www.lympnevillagehall.co.uk/bookings/)



**ACC ELECTRICAL**  
Fuse board changes,  
cctv,alarms, PAT  
testing, smoke alarms,landlord safety  
checks,  
security,lighting,rewires, smoke  
detectors and much more!  
Free Quotations and friendly  
reliable service  
01303 211 011/07595336880  
[info@accelectrical.co.uk](mailto:info@accelectrical.co.uk)  
[www.accelectrical.co.uk](http://www.accelectrical.co.uk)

## WRAIGHT'S MOWERS

NEWINGREEN (A20)  
Servicing,Repairs,Sharpening  
Spares and Sales  
all makes of petrol & electric mowers.  
Benham Water Farm,  
Ashford Road (A20)  
Newingreen, CT214JD  
Opposite old race course  
Tel 07733293315

## TAXI IN THE VILLAGE.

Short, long or any distance.  
Airport, docks, etc.  
Ask for a quote.  
Speak to Geoff  
Phone 07703 444 814

## DN PLASTERING SERVICES

Local, Trustworthy & Reliable  
Over 25 Years Experience  
Call Darren 07932 002 442  
[dnplasteringservices@gmail.com](mailto:dnplasteringservices@gmail.com)

## CURTAINS

Handmade  
curtains,blinds and soft furnishings.  
Curtain alterations.  
Call Valery Wren  
01303 237 755

## THE EXECUTIVES SUITE

Virtual Support Service  
Remotely supporting time limited  
business owners  
with administrative tasks.  
Travel, diary management,  
inbox detox & lifestyle  
management.  
Contact Natalie Dowsett at  
[natalie@theexecutivesuite.co.uk](mailto:natalie@theexecutivesuite.co.uk)

## CATHERINE'S CLEANING

Over 4 years Cleaning Experience  
Regular Cleans  
Spring Cleans  
Serving Lympne,Hythe  
and surrounding areas.  
DBS checked, references on request.  
Call or message Catherine on:  
07957991266  
Email: [flower.powercat@hotmail.co.uk](mailto:flower.powercat@hotmail.co.uk)

## SPOTLIGHT PEST CONTROL SERVICES LTD

British Pest Control  
Association member.  
General pest control including  
rats, mice, moles, wasps, ants,  
fleas, bird spikes and general  
proofing Fast, friendly and  
reliable.  
Contact Dave on 07715211899.  
[info@spotlightpestcontrolkent.co.uk](mailto:info@spotlightpestcontrolkent.co.uk)  
[www.spotlightpestcontrolkent.co.uk](http://www.spotlightpestcontrolkent.co.uk)



I'm Michelle, local  
branch owner for  
Sales and Lettings  
for The Good  
Estate Agent.  
We are a 13 year  
old family run,  
Nationwide business, with our  
Head Office in Lympne.  
I take pride in my high quality  
customer service and my doors  
don't close at 5pm!  
For a Free Sales or Lettings  
valuation please call 07848015443  
or email  
[michelleferbrache@thegood.co.uk](mailto:michelleferbrache@thegood.co.uk)

*Kingdom*

CARPET CO.

- Carpets Supplied & Fitted
- Carpets Professionally Cleaned
- Carpets Whip Edged & Cotton Bound

Whatever your carpet need, give us a call for a  
FREE estimate / assessment.

Over 50 years combined experience.

07943 764 442

Email: [kingdom.carpet.co@gmail.com](mailto:kingdom.carpet.co@gmail.com)

## LOCAL TRADES



### CN ELECTRICAL DOMESTIC & RESIDENTIAL

New Sockets, Fault Finding,  
Rewires, Lighting,  
Consumer units and much more!  
NICEIC REGISTERED ELECTRICIAN

Contact Chris  
Mob : 07826 505671  
www.cnelectrical.co.uk  
info@cnelectrical.co.uk

**RICHARD AJ THOMPSON LTD**  
**Plumbing & heating engineer**  
Gas Safe Registered-No 513449,  
22 years experience.  
Central heating boiler servicing,  
repairs and installations.  
All domestic plumbing repairs,  
Water softeners, gas fires, cookers  
and water heaters.  
Landlord's Safety Certificates.  
Tel 01303 266 273  
Mob 07540 333 250

**MUTTS APPRECIATED**  
Professional Dog Grooming Services  
Based in Newingreen  
Fully qualified and insured  
All breeds welcome  
Tel: 07927335947  
Instagram: @muttsappreciated

## HANDYMAN AND BUILDING MAINTENANCE

Roofing, Guttering,  
Plumbing, Drains,  
Painting, Decorating,  
Plastering  
Free Estimates  
References available

Contact 07836 665382

**EX-JOB AND DOGS**  
Retired local police officer offering  
Dog Walking, Dog Day Care  
Boarding in Home Environment  
Home Watch Service Long/short term  
Including Cat Care  
Contact Kerry  
with your requirements  
CONTACT 07791 095 895  
exjob17@gmail.com

**DILTON MINI SKIP HIRE**  
Ballast, hardcore, sand,  
topsoil supplied. Registered waste  
carrier.  
Phone 01303 812 448, or  
Mobile 07799 433 754

**THE BOWEN TECHNIQUE**  
BOWEN THERAPY IN LYMPNE  
Back pain, arthritic pain, asthma,  
digestive disorders, migraine,  
practically any problem can  
potentially be addressed.  
Lynne Rodgers, Cert ECBS.  
Call 01303 268 910 or  
[lynnealexrodgers@gmail.com](mailto:lynnealexrodgers@gmail.com)

**PAINTING, DECORATING &  
HANDYMAN**  
Interior and Exterior – All types  
undertaken. FREE ESTIMATES.  
30 YEARS EXPERIENCE  
Call Mick Cockburn  
Mobile 07769 221 871

**PIANO LESSONS**  
Enjoy learning the piano with an  
experienced teacher in a pleasant  
home near Lympne Primary  
School. Children and adults of all  
abilities welcome. It's never too late  
to start - just bring your fingers and a  
love of music!  
Contact Kate Chesterman,  
Bachelor of Music (Hons)  
Tel 07903 994 049 or Email:  
[lympnekate@gmail.com](mailto:lympnekate@gmail.com)

**LYMPNE  
VILLAGE STORES  
AND POST OFFICE**  
OPEN from 830-530 weekdays  
Saturday 830-2pm  
Sundays CLOSED  
Visit us for your everyday needs  
Milk, bread, eggs and your daily  
newspaper or magazine and the  
National Lottery.

**NEWS LETTER  
DIRECT TO YOUR  
IN BOX? -  
SAY NO MORE**



If you would like to receive this  
newsletter direct to your email  
each month please copy the  
following link into your preferred  
browser and subscribe to our E-  
newsletter service.  
<http://eepurl.com/hfeE9v>  
Alternative scan the QR code to  
be taken to the subscription  
form.

Only a first name and an email  
are required.

### County and District Councillors Contact details

**KCC Councillor Jenni Hawkins**  
[jenni.hawkins@kent.gov.uk](mailto:jenni.hawkins@kent.gov.uk)

### District Councillors

**John Wing**  
[john.wing@folkestone-hythe.gov.uk](mailto:john.wing@folkestone-hythe.gov.uk)  
**Jeremy Speakman**  
[jeremy.speakman@folkestone-hythe.gov.uk](mailto:jeremy.speakman@folkestone-hythe.gov.uk)

**NHS**

**HIGH BLOOD PRESSURE**

**LEAVES NO CLUES**

...BECAUSE IT  
CAN HAVE NO  
SYMPTOMS

Get your free  
blood pressure check  
in pharmacy today.

See your  
pharmacist

Help us  
help you