

LYMPNE NEWSLETTER NOVEMBER 2023



DELIVERED TO
HOMES IN LYMPNE,
NEWINGREEN
COURT-AT-STREET
AND
WEST HYTHE ROAD

IN THIS MONTHS ISSUE
BUS SERVICE RETURNS,
CAROLS AT THE CASTLE, CHURCH
VOLUNTEERS NEEDED
NEW PARISH WEBSITE
AND MUCH MORE



Triumphant Return: Number 10 Bus Service Restored in Lymgne!

Lymgne residents have reason to rejoice as the Number 10 bus service has been reinstated in their village, thanks to a remarkable display of community unity and the dedicated efforts of the Parish Council.

The story began at a Parish Council meeting, where villagers came together to share their hardships caused by the removal of the Number 10 bus. The room was filled with determination as residents described children stranded at bus stops, elderly individuals trekking long distances with heavy bags, and pedestrians navigating dangerous routes. It was evident that Lymgne had been left isolated without reliable transportation, an untenable situation.

Safety concerns were voiced, particularly with the impending harsh winter weather. The idea of community members enduring these conditions to access essential services and medical appointments was deemed unacceptable, prompting a united demand for change.

The Parish Council swiftly pledged to take action, emphasizing their commitment to resolving the transportation problem. They discussed actions taken so far and explored the availability of grants for community buses, illustrating their determination to find a solution to this pressing concern.

The Parish Clerk was entrusted with the task of pressuring the relevant authorities and the press to draw attention to Lymgne's plight. Encouragingly, the Stagecoach Area manager's recent comments indicated a potential return of the service, though with a less frequent schedule.

In a thrilling development, the Number 10 bus service is set to return to Lymgne on a trial basis, commencing in mid-November. This announcement was met with overwhelming gratitude and relief.

Cllr Jim Martin, the council leader of Folkestone & Hythe, expressed his delight at the service's restoration and passionately appealed to the Lymgne community. He emphasized that the service must be actively used to secure its future, stating, "It is quite simply - use it or lose it." Stagecoach, the bus company responsible for the initial removal of the service, responded to the community's plea. Managing Director Joel Mitchell expressed confidence in reinstating the service, initially on a trial basis, due to the outpouring of local support.

The restored Route 10 bus will operate on an hourly schedule from Monday to Saturday, connecting Lymgne with Hythe, Folkestone, and essential destinations like the William Harvey Hospital and Ashford. This development stands as a testament to the strength of community unity and persistence. The Parish Council extends heartfelt thanks to all residents who wrote to local officials, demonstrating the power of community action.

The return of the Number 10 bus service is a shining example of what can be achieved when a community unites for a common cause.

NEW BUS TIME TABLE PUBLISHED

New bus time tables are available at the stage coach website and will be posted at bus stops in the village

*A DATE FOR YOUR DIARY
CAROLS IN THE COURTYARD
LED BY THE
SALVATION ARMY BAND
THURSDAY 21 DECEMBER
7.00 PM
LYMPNE CASTLE*



LYMPNE CASTLE AT CHRISTMAS

FESTIVE CHRISTMAS CRAFT FAIR –

Sunday 12th November 2023 – 12pm– 4pm
Medieval Bar open 12-6pm

BINGO AT THE CASTLE! – Tuesday 14th November 2023
– Bingo commences at 7pm Medieval Bar open 5-10.30pm

WREATH MAKING – Tuesday 28th November and
Tuesday 5th December 2023 – 7-9.30pm - £55.00 Per
Person to be booked via Eventbrite includes your beautiful
handmade wreath to take home, a hot drink and a mince pie.

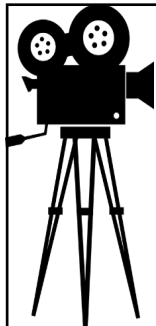
QUIZ AT THE CASTLE! – Thursday 30th November 2023
Quiz commences at 6.30pm – Medieval Bar open 5 – 10.30pm
Tables for the quiz need to be booked through the castle.

SANTA'S GROTTTO AT THE CASTLE! – Saturday 9th,
Sunday 10th, Saturday 16th and Sunday 17th
December 2023 – 12– 4pm

Medieval Bar open 12-6pm– Tickets are £5 for Santa's
Grotto and these need to be booked via Eventbrite.

CAROLS AT THE CASTLE! – Thursday 21st December
2023 – Arrival for 7pm with carols commencing at
7.30pm.

For further details please visit our What's On page



LYMPNE VILLAGE HALL FILM CLUB

IN THE HARRY MARGARY HALL
Films will be shown every 4th Tuesday of
the month (not December).

**MAKE A DATE IN YOUR DIARY FOR
THIS POPULAR VILLAGE EVENT.**

**ALL PROFITS GO TO THE
VILLAGE HALL FUND.**

7.15 for a 7.30 start

FREE MEMBERSHIP

Entrance fee of £5.00 includes refreshments and
lucky draw ticket.

Showing on 28th November :

Charade

*Cary Grant and Audrey Hepburn star in this romantic
comedy/ mystery classic of 1963*

We reserve the right to show a substitute film should the need
arise or to refuse admission. Children under 16 must be
accompanied by an adult (ID will be requested).

PLEASE NOTE THERE WILL BE NO FILM CLUB DECEMBER

HARVEST SUPPER

A very enjoyable evening with ploughmans
platters and a wide variety of delicious
home-made desserts, all eaten to the music of
New Frontier. Our thanks go to the organisers
and everyone who helped and supported in
whatever way. We are delighted to report that
we raised, after expenses, **£570.00**. Thank you

LYMPNE OVER 50s LUNCH CLUB

Join our friendly social group for a chat
Over a hot meal, a dessert and tea or coffee
with fun activities, bingo or quizzes

Taking place at the
Harry Margary Hall on the 2nd Friday of each
month

Cost £8.50.

Booking essential before the day of the meal

Contact Margaret on 01303 269557

Transport available, if necessary, within Lympne
Village

LYMPNE SHORT MAT BOWLS CLUB

Lympne Short Mat Bowling Club meets every
Monday and Thursday from 7.00 to 9.30pm from
October until April.

**IT IS A SMALL, FRIENDLY CLUB AND WE CURRENTLY
HAVE VACANCIES FOR NEW MEMBERS.**

Do come along and try your hand at an enjoyable,
skillful game.

The first **THREE** sessions are **FREE**. There is no need
to buy any bowls as the club has a few sets which can
be used until you have decided whether you are
going to enjoy the game. All you need is a pair of
carpet slippers or **SMOOTH SOLED SHOES**.

Do come long you will be made most welcome.

For further details please ring or text 07484377139
or

email:- joyce_groom@btinternet.com

Home Care With a Difference



Tailor made to your individual requirements

- Award winning care
- Personal care services
- Companionship services
- Highly trained CAREGivers
- Home help services

If someone in your family needs a little help
please call us on **01303 847899**

www.homeinstead.co.uk/folkestone
300 Cheriton Road, Folkestone, Kent, CT19 4DP

Each Home Instead Senior Care® franchise office is independently
owned and operated. Copyright © Home Instead 2017.

Home Instead
SENIOR CARE
to us, it's personal.

Quilter
Financial
Advisers

Local Financial Advice

Tailored specifically for you

*I live in West Hythe and can help you with advice or reviews, whether
for businesses or personally on any of the following products:*

- ▶ Retirement Planning
- ▶ Investments
- ▶ Mortgage Protection
- ▶ Income Protection
- ▶ Business Protection
- ▶ Inheritance Tax Planning
- ▶ Pensions and Transfer Advice
- ▶ Mortgages and Re-mortgages
- ▶ Critical Illness cover
- ▶ Life Cover

Transferring out of a Final Salary scheme is unlikely to be in the
best interests of most people.

For a FREE initial consultation please contact:

Corinne Gibbons DipPFS CeMAP

Financial Planning Consultant

T. 01303 653425

E. corinne.gibbons@quilterfa.com

W. quilterfinancialadvisers.co.uk

Approver Quilter Financial Services Limited & Quilter Mortgage Planning
Limited. 21 July 2023.

KENT GARDENER

Now the hour has gone back the shorter days and long dark evenings feel autumnal. Gardens are still colourful but there will soon be strong winds and heavy rain to spoil this. As soon as the ground is really wet mulch around plants (not touching



stems) to retain as much moisture as possible for next year. Straw or spent compost from this summers pots and grow bags is fine if it doesn't contain pests, e.g., white grubs, but worms are good. As warmer autumns are making inroads into winter, chores like mowing the lawn still need to be done. Raise the mower blades for one last cut and neaten the edges before tools are sharpened, oiled and put away until spring. Rake up the fallen leaves and bag up to make leaf mould for mulch or mix with compost for seed sowing. Make sure the leaves are damp then store in a shady, warmish place for 12 - 18 months to rot down. If you have fruit trees protect them with grease bands or barrier glues to prevent wingless female winter moths from climbing the trunk to lay eggs. Only use glues sold for this purpose which will not entangle larger animals. Harvest winter vegetables as needed but protect cauliflower and turnips from hard frosts. Remove yellowing leaves from brassicas to help prevent downy mildew and cover to pre-empt pigeon attacks. Do remember to provide food and water for birds and if, filling empty spaces, try winter or early spring flowering plants to provide food for bees which seem to emerge earlier each year. Happy gardening.

THE LYMPNE PLAYING FIELD AND VILLAGE HALL COMMITTEE

Notice of Annual General Meeting
Tuesday 14th November in the hall at 7:30pm
This is your opportunity to meet the committee, hear about what we've been up to in the last year, raise any questions, or maybe even get involved.

SAVE THE DATE!

NEW YEAR'S EVE PARTY IN THE VILLAGE HALL
If you're not sure what to do on New Year's Eve, worry no more! The Village Hall Committee are planning a party in the main hall. There will be a disco and a bar - no need to bring your own booze. Bring the whole family, bring your friends, everyone welcome. More details to follow next month.

CLEANERS NEEDED

Would you be able to spend a couple of hours or so, say once a month or less, to go on a rota to help keep our lovely church clean and welcoming? You can work alone or with others, at a time to suit you. In addition, a couple of times a year, we organise a bigger group to carry out a deeper clean before Easter and Christmas.

If you would like to help, or for further information, please email fionajarvest22@gmail.com.

FUNDRAISING SOCIAL GROUP We invite you to join our fundraising social group where we seek enthusiastic individuals to assist in organizing events. Your participation will support church maintenance, chair replacements, and charitable endeavours. Connect with us by emailing fionajarvest22@gmail.com.

David Ian REMOVAL SERVICE

FURNITURE & BEDS

LET US MOVE YOU

Providing Flexibility to make your move run smoothly for you

- Local, National & European Removals
- Home Office or Commercial
- House Clearance & Disposal Service Available
- Short Notice No Problem, Same Day Service Available
- Storage Facilities
- Full Packing Service Available
- No Job Too Small
- CALL THE EXPERTS



www.davidianfurniture.com

CALL NOW FOR A FREE QUOTE
01303 264052

Dymchurch Road | Hythe | Kent
Email: sales@davidianfurnitureltd.com



CELEBRATING 150 YEARS!



JOHN WILLIAMS & COMPANY

EST. 1870

Roofing & Building Maintenance
Specialists

When Quality Matters

01303 265198

Your Local Family Business with a National Reputation

www.johnwilliamsroofing.co.uk

This month we look at a German pilot serving in the RAF at Lympne in WW2.

The German Typhoon Pilot who Became a Knight of the Realm

By John Simpson

There were three German born pilots that fought with the Allies against Nazi Germany in World War Two. One of them was based at Lympne with 609 Squadron in 1943.

Klaus Hugo George Fritz Adam was born in Berlin on 5th February 1921 to an upper middle class secular Jewish family. He became better known as Kenneth Adam and was educated in the UK where he was sent with other family members in the summer of 1934. His mother and father at first tried to stay in Germany, but as the persecution of the Jews permanently took hold, they too came to the UK, settling in Hampstead, London. Sadly his father died in 1936 at the age of 56 after falling ill.

Kenneth was at first sent to boarding school in Edinburgh, but relocated to Hampstead and continued his education at St. Paul's School. After leaving school he became an apprentice for *C. M. Glover & Partners* which specialised at making bomb shelters at the time. In October 1940 Kenneth joined the Pioneer Corps which after eight months enabled him to be accepted to join the RAF Volunteer Reserve as a trainee pilot. After training in Scotland, Canada and the USA, he joined 609 Squadron at Lympne as Flight Lieutenant Adam on the 1st October 1943. He had become a Typhoon pilot flying in support of long range USAAF bombers flying into mainland Europe on raids. His nick name at the time was '*Heini the Tankbuster*' for his daring exploits. While at Lympne 609 became the first Typhoon squadron to achieve 200 kills. They celebrated with a big party at the *Majestic Hotel* in Folkestone. They would go on to fly low level sorties in support of ground troops. One such activity was to take part in the *Battle of Falaise Gap* in Normandy after D-Day. They would move to the Netherlands in November 1944.

The same year his younger brother Dieter, who had become *Denis Adam*, joined 183 Squadron as a pilot. They were both now in the same wing. The third German born Jewish pilot in the RAF was Peter Stevens, who was flying Hampden bombers in Bomber Command. They were all risking falling into German hands and certain execution. Stevens would go on to be shot down and became a prisoner of war. Happily he was never identified as German born and survived the war.

After WW2 Kenneth would become a multi award winning film production set designer, and was now better known as Ken Adam. He would go on to work on several Bond films; *Dr No*, *From Russia with Love*, *Goldfinger* and *Diamonds are Forever*. Other films included *Dr. Strangelove*, *The Ipcress File*, *Funeral in Berlin*, *Goodbye Mr Chips* and *Chitty Chitty Bang Bang* for which he designed the car. There were many more. He was knighted in 2003 to add to an OBE in 1996. He married Maria-Letizia Moauro in 1952.

Sir Ken Adam died on 10th March 2016 in Knightsbridge, London at age 95.

For information about the Lympne Airfield History Society, contact:
John Simpson on 07508 708725 or email:
johnsimpson43@btinternet.com

FROM STUDYING HISTORY AND ARCHAEOLOGY IN LYMPNE

Andy Linklater returned to SHAL's October meeting with a comprehensive presentation on 'Bygone Kent in Pictures' from 1940s/50s. He asserted how Kent was rightly named the Garden of England with its widespread, large orchards and a flourishing hop cultivation, with their oast houses, for the brewing industry. Agriculture was dominant involving ploughing and harvesting, sheep shearing, farriers and blacksmiths for the many horses undertaking heavy work on the land. Interestingly, the farmers and their labourers were smartly dressed and usually wore flat caps. For 200 years from the late 18th century Kent produced the finest willow cricket bats, made in West Malling. The sea and rivers also employed significant numbers in fishing and repairing nets. By the 20th century shipbuilding had declined, although Chatham Dockyard continued making silk national flags to any country. Water sports, notably speed boats, became popular as the tourist industry grew, and coastal places such as the holiday resorts of Margate, Herne Bay and Folkestone were completely full in the two weeks when manufacturers shut down for their annual holidays. Shops traded in specialist goods and services, and were all staffed with men and women providing a face to face personal service.

Andy's glimpse at the variety of activities and occupations was a fascinating insight into the golden days of the late 40s and 50s, and the photos depicted the relief and joy after World War II in building a more hard-working and prosperous society.

Our next meeting on Tuesday 21 November will be talk by local speaker, Vince Williams, on places of worship in Folkestone that have disappeared or been converted.

ST STEPHENS CHURCH


SERVICES AND EVENTS IN NOVEMBER

5th Parish Communion	11.00 am
12th Hooba Family Service led by Sunday Club	11.00 am
18th Coffee Morning	10.30 am
15th Morning Worship	11.00 am
19th Parish Communion/Morning Worship	11.00 am
26th Parish Communion	11am

SUNDAY CLUB Meets at The Lads' Club, Rectory Lane, Saltwood, CT21 4QA, 10-11am during term time. We have a wonderful time with all sorts of art & crafts and cooking, games and lots of drama. Fun groups for children aged 3-10 years.

The Monday Club for young people aged 11 - 16 years is also held from 5.30 - 7.00 pm at its usual venue. New faces to both groups are always very welcome.

For more information ring: Christine Clover on 0300 0301662, text: 07379 877846 or email: christineclover@lympneandsaltwoodchurches.uk.



Come and join us at
Lympe & Saltwood
Toddlers
10 - 11:30am

Thursday mornings in the
Harry Margary Hall,
Aldington Road, Lympe
CT21 4LE



**ST STEPHEN'S CHURCH
COFFEE MORNING
SATURDAY 18th OCTOBER
10.30am - 12.30pm**

*Come and join us for
coffee, cake and savoury bakes
Well behaved dogs welcome*

**Proceeds to maintenance of the church plus
a donation to this month's nominated
charity:
A21
(FIGHTING HUMAN TRAFFICKING)**

Lympe Village Nativity – Sunday 17 December



Save the date! This will be a spectacular event involving most of the village groups and school. Starts at Village Hall and includes both Castle and Church.

Auditions

Thursday, 9th November 6pm

at Lympe Church

We are progressing the planning for this event. Camels, Donkeys & Sheep are already taking part. We now need human actors for the speaking parts for Mary, Joseph, Narrator, 2 Shepherds, 2 Kings & the Angel Gabriel.

Contact Rosemary or Rachel below

We will also need:

There are lots of ways you can be involved:

Non-speaking actors in costume

Community choir

Marshals - dressed as Roman soldiers on the parade

Marshals helping keep people, cars and animals safe.

Helpers for refreshments at the village hall.

Please contact one of the organisers below with your offer of help. For actors / choir contact Rachel-lympnechurch@gmail.com or Rosemary-rosemary@stutchbury.myzen.co.uk For marshals or refreshments contact Fiona - fionajarvest22@gmail.com

Lympe Fellowship

At our AGM in October thanks were given to our hardworking committee for a very varied programme of events. We were delighted that Jill Page was willing and happy to continue as Chair and the committee were also happy to continue, with one addition. Annual subs have increased to £30 to cover the cost of hiring the hall, increasing fees of speakers and any additional expenses. Following the AGM we enjoyed glasses of fizz and cake and an always enjoyable opportunity to chat and catch up.

Our next meeting is on 9 November when we will be learning how to make a Christmas Angel from an old paperback book. Intriguing!

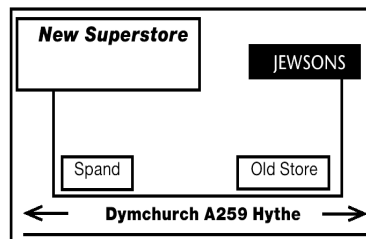
Lympe Fellowship normally meets at 1.15pm in the Harry Margary Hall on the 2nd Thursday of the month, with a programme of interesting and informative talks and activities. For further information about our group, please contact Jill Page on 07846 819693

David Ian
FURNITURE & BEDS
SUPERSTORE

Dymchurch Road, Hythe, Kent

01303 264052

Email: sales@davidianfurnitureltd.com



REMOVAL AND STORAGE
CALL NOW FOR A FREE QUOTE

TERMS & CONDITIONS APPLY

OPEN 6 DAYS A WEEK

Mon - Fri 9am - 5.30pm Sat 9am - 5pm

Kent
County
Council
kent.gov.uk



**TRADING
STANDARDS**

APPROVED

working in partnership with
Checkatrade

**10%
Discount
for
Lympe
Residents
at**

David Ian
FURNITURE & BEDS
SUPERSTORE

**LYMPNE
PARISH COUNCIL
CONTACT**

DETAILS

If you have any queries regarding local issues, or any other matters you wish to raise, you can contact Lympne Parish Councillors
Current Members
Chair Mike Boor
Vice Chair Anne Beales

Kerry Boyland-Wood
Claire Yates
Michael Potter
Judith East
Darren Burden

Correspondence should be sent to the Parish Clerk **Jeff Lawrence**
29 Honeywood Close
Lympne
Tel: 01303 883 228
e-mail: clerk@lympneparishcouncil.gov.uk

**Lympne Parish Council's New Website:
A Digital Community Hub**

We're thrilled to announce the launch of the Lympne Parish Council website at www.lympneparishcouncil.gov.uk.

This digital platform is your gateway to community information. We invite all Lympne residents to explore the site, offer feedback, and share ideas. Your input is vital in making this website a valuable tool for our community, ensuring it serves your needs effectively. Together, let's build a stronger, more connected Lympne.

Visit www.lympneparishcouncil.gov.uk today and have your say or email the clerk with your ideas to clerk@lympneparishcouncil.gov.uk

squiggle

WILLS

TRUSTS

POWER OF
ATTORNEY

PROBATE

Death isn't something most of us want to talk about or think about. And why would we? But what we DO want is for our loved ones to be looked after when we're gone.

And yet, nearly half of us don't have a will or even a plan for our estate when we die. It's something many just don't get round to - despite knowing that we should.

Book your free consultation with Squiggle today.

01233 659796

www.squiggleconsult.co.uk

Squiggle Consult Ltd
11 Park Barn, Evegate Business Park, Mersham, TN25 6SX
Registered Company - 10816512

**County and District
Councillors Contact details**

KCC Councillor Jenni Hawkins
jenni.hawkins@kent.gov.uk

District Councillors

John Wing
john.wing@folkestone-hythe.gov.uk

Jeremy Speakman
jeremy.speakman@folkestone-hythe.gov.uk

REFUSE COLLECTION DATES NOVEMBER 2023

Recycling (Purple Lid/Black Box) and Food Waste will be collected on: Tuesday 14th and 28th, Non-Recyclables (Green Lid) and Food Waste will be collected on: Tuesday 7th and 21st.

Garden Waste Collections 11th and 25th

Please do not put the lid on the Black Box—use the food waste container or a heavy object.

**OIL
BOILER
SERVICING**

INCLUDES NOZZLES & HOSES

£150 +VAT

CONTACT US :

www.baldwinalter.co.uk
office@baldwinalter.co.uk
01304 226611

*baldwin
alter*



Private Home Care
Specialists in 1-to-1 home care
of elderly and vulnerable people

- Medication
- Personal Care
- Security Checks
- Outings
- Domestic
- Wake / Sleep Nights
- Live in

**Disability Cars for
our clients
available 24 hours
a day**



Office at 7 Great Conduit Street, Hythe

01303 847422

0756 3636 332

privatehomecarekent@gmail.com

Privatehomecare.co.uk



LOCAL TRADES

LYMPNE PARISH COUNCIL CANNOT ACCEPT RESPONSIBILITY FOR THE ACCURACY OF ANY OF THE DETAILS ADVERTISED. YOU ARE STRONGLY RECOMMENDED TO TAKE APPROPRIATE ADVICE BEFORE ENTERING INTO ANY COMMITMENT.

STUDIO J HAIR SALON LTD

1a Belcaire Close Lympe
A small family business
with a big heart

Studio J Hair Salon are excited to introduce the newest member of our growing team - Naomi; she will be starting with us on the 1st September and any new clients will receive 20% off cut and styles.
01303 267877
www.studiojhair.co.uk

VILLAGE HALL BOOKINGS VISIT

[http://
www.lympnevillagehall.co.uk/
bookings/](http://www.lympnevillagehall.co.uk/bookings/)



ACC ELECTRICAL

Fuse board changes,
cctv,alarms, PAT
testing, smoke alarms,landlord safety
checks,
security,lighting,rewires, smoke
detectors and much more!
Free Quotations and friendly
reliable service
01303 211 011/07595336880
info@accelectrical.co.uk
www.accelectrical.co.uk

CATHERINE'S CLEANING

Over 4 years Cleaning Experience
Regular Cleans
Spring Cleans
Serving Lympe,Hythe
and surrounding areas.
DBS checked, references on request.
Call or message Catherine on:
07957991266
Email: flower.powercat@hotmail.co.uk

TAXI IN THE VILLAGE.

Short, long or any distance.
Airport, docks, etc.
Ask for a quote.
Speak to Geoff
Phone 07703 444 814

LOCAL BATHROOM and KITCHEN FITTER

Reliable, professional,20 years
experience fitting bathrooms, tiling,
plumbing and general building work.
Call Andrew on 07788 728 787 for a
free estimate.

DN PLASTERING SERVICES

Local, Trustworthy & Reliable
Over 25 Years Experience
Call Darren 07932 002 442
dnplasteringservices@gmail.com



07745 532075

Mobile Foot Health Practitioners.
Treating and managing foot and nail
conditions, corns, callus, fungal,
fingernails, diabetic foot care
www.eastkentfootcare.co.uk



PUNCH & JUDY PLAYGROUP

Quality care and
learning for
2-4 year olds
At Lympe Village
Hall Term time only
Mon-Fri
8.30am-3pm,
Weds 8.30am-1pm
Tel. no: 07527 111584 e.mail:
info@punch-and-judy.org.uk
or visit www.punch-and-judy.org.uk

THE BOWEN TECHNIQUE

BOWEN THERAPY IN LYMPNE
Back pain, arthritic pain, asthma,
digestive disorders, migraine,
practically any problem can
potentially be addressed.
Lynne Rodgers, Cert ECBS.
Call 01303 268 910 or
lynnealexrogers@gmail.com

CURTAINS

Handmade
curtains,blinds and soft furnishings.
Curtain alterations.
Call Valery Wren
01303 237 755

WRAIGHT'S MOWERS

NEWINGREEN (A20)
Servicing,Repairs,Sharpening
Spares and Sales
all makes of petrol & electric mowers.
Benham Water Farm,
Ashford Road (A20)
Newingreen, CT214JD
Opposite old race course
Tel 07733293315

ASHTON TREE CARE

Hedge cutting , stump grinding ,
tree surgery
All work fully insured
Contact 07929 627 622
ashtontreecare@gmail.com

PLUMBER

City & Guilds qualified
Affordable, Reliable and Local
All work fully insured and
guaranteed. Wide range of hot
and cold water services. See
website for further details,
rates and customer feedback.
Call now on 07899 034 695
for a no-obligation, free quote
or visit our website:
www.condicoplumbing.co.uk

THE EXECUTIVES SUITE

Virtual Support Service
Remotely supporting time limited
business owners
with administrative tasks.
Travel, diary management,
inbox detox & lifestyle
management.
Contact Natalie Dowsett at
natalie@theexecutivesuite.co.uk



K.P Decorating

- Internal Decorating
- External Decorating
- Plastering
- Access all areas

Call: 07956455720
www.kpdecorate.com

LOCAL TRADES

PAINTING, DECORATING & HANDYMAN

Interior and Exterior – All types undertaken. FREE ESTIMATES.
30 YEARS EXPERIENCE
Call Mick Cockburn
Mobile 07769 221 871



CN ELECTRICAL DOMESTIC & RESIDENTIAL

New Sockets, Fault Finding, Rewires, Lighting, Consumer units and much more!
NICEIC REGISTERED ELECTRICIAN
Contact Chris
Mob : 07826 505671
www.cnelectrical.co.uk
info@cnelectrical.co.uk



TAI CHI

Suitable for all ages and levels of fitness
Every Friday 1215
Lympne Village Hall

www.taichiforyou.co.uk
CONTACT- 07587 167 756

YOUR COMPUTER PROBLEMS SOLVED

Call out service. PC/Laptop repairs, slow running, broken screens, memory upgrades, virus removal, data recovery. Enquiries welcome.
Call Rob Gardener 07807 180 906 or 01304 219 471
Email robert.gardner@talk21.com

Kingdom
CARPET CO.

- Carpets Supplied & Fitted
- Carpets Professionally Cleaned
- Carpets Whip Edged & Cotton Bound

Whatever your carpet need, give us a call for a FREE estimate / assessment.

Over 50 years combined experience.

07943 764 442

Email: kingdom.carpet.co@gmail.com

RICHARD AJ THOMPSON LTD
Plumbing & heating engineer
Gas Safe Registered-No 513449,
22 years experience.
Central heating boiler servicing,
repairs and installations.
All domestic plumbing repairs,
Water softeners, gas fires, cookers
and water heaters.
Landlord's Safety Certificates.
Tel 01303 266 273
Mob 07540 333 250

HANDYMAN AND BUILDING MAINTENANCE

Roofing, Guttering,
Plumbing, Drains,
Painting, Decorating,
Plastering
Free Estimates
References available

Contact 07836 665382

SPOTLIGHT PEST CONTROL SERVICES LTD

British Pest Control Association member.
General pest control including rats, mice, moles, wasps, ants, fleas, bird spikes and general proofing Fast, friendly and reliable.
Contact Dave on 07715211899.
info@spotlightpestcontrolkent.co.uk
www.spotlightpestcontrolkent.co.uk

PIANO LESSONS

Enjoy learning the piano with an experienced teacher in a pleasant home near Lympne Primary School. Children and adults of all abilities welcome. It's never too late to start - just bring your fingers and a love of music!
Contact Kate Chesterman,
Bachelor of Music (Hons)
Tel 07807 156 884 or Email:
lympnekate@gmail.com

LYPNE VILLAGE STORES AND POST OFFICE

OPEN from 830-530 weekdays
Saturday 830-2pm
Sundays CLOSED

Visit us for your everyday needs Milk, bread, eggs and your daily newspaper or magazine and the National Lottery.

MUTTS APPRECIATED

Professional Dog Grooming Services
Based in Newingreen
Fully qualified and insured
All breeds welcome
Tel: 07927335947
Instagram: @muttsappreciated

John Williams & Company

Roofing and Building Maintenance
Slating, Tiling, Flat Roofing, Lead-work Gutters, Fascias and Soffits
Brickwork, Carpentry, Plastering
Free Quotations and Advice
Call: 01303 265198
Stone Street, Lympne, CT21 4LD
www.johnwilliamsroofing.co.uk

EX-JOB AND DOGS

Retired local police officer offering
Dog Walking, Dog Day Care
Boarding in Home Environment
Home Watch Service Long/short term
Including Cat Care
Contact Kerry
with your requirements
CONTACT 07791 095 895
exjob17@gmail.com



I'm Michelle, local branch owner for Sales and Lettings for The Good Estate Agent.
We are a 13 year old family run, Nationwide business, with our Head Office in Lympne.
I take pride in my high quality customer service and my doors don't close at 5pm!
For a Free Sales or Lettings valuation please call 07848015443 or email
michelleferbrache@thegood.co.uk

UK Health Security Agency



Flu and Covid-19 spread more easily in winter and can cause you serious illness.

GET WINTER STRONG

Come forward for your flu and Covid-19 vaccinations when invited.

Vaccination is the best way to protect yourself, those around you and the NHS.