

LYMPNE NEWSLETTER

SEPTEMBER 2023



DELIVERED TO HOMES IN LYMPNE, NEWINGREEN COURT-AT-STREET AND WEST HYTHE ROAD

IN THIS MONTHS ISSUE
BUS ROUTE UPDATE,
OTTERPOOL CONSULTATION,
KENT KARRIER QUIZ NIGHT
AND MUCH MORE

Dial-a-Ride Service
door to door pick up

South East Kent Karrier
Serving areas in the districts of:
Canterbury
Dover
Shepway

The transport service that picks you up and drops you back at your door

SOUTH EAST KENT KARRIER

INTRODUCING KENT KARRIER: YOUR ACCESSIBLE VILLAGE CONNECTION

Lympne Village will lose their bus service in September, affecting transportation for residents. Kent County Council introduces the solution - Kent Karrier. This dial-a-ride service ensures rides from home to key destinations, like town centres and supermarkets, and offers group bookings, airport transfers, and shopping aid.

ACCESSIBLE AND INCLUSIVE-Kent Karrier prioritizes inclusivity. All vehicles are wheelchair accessible, and drivers assist throughout.

NO MEMBERSHIP FEE-To maintain community connections, the £5 annual fee is waived, making Kent Karrier accessible to all.

AFFORDABLE FARES-A nominal fare applies:

Urban areas: £2

Rural areas: £3.50

ELIGIBILITY-Kent Karrier serves those with transport challenges:

Medical condition affecting public transport use

Rural residents over 500 meters from transport

Age 85 and above

EASY APPLICATION-Apply on the KCC website or by mailing the form. Inquiries: kent.karrier@kent.gov.uk or call 03000 41 35 67. Or contact the Parish Clerk on lympnepc@outlook.com or call 01303 883228 and leave a message

STAY CONNECTED Kent Karrier ensures accessible, affordable travel. Apply now to remain connected to your community.



THE FIGHT CONTINUES TO SAVE VILLAGE BUS ROUTE

Lympne Village residents are rallying together as the bus service to their community faces cancellation.(3rd September) The Lympne Parish Council has been actively addressing this concern, working alongside local district and county councils to seek solutions and mitigate the impact of this service disruption.

Heartfelt appreciation goes out to the residents who passionately expressed their worries through emails and letters. These voices underscore the crucial role the bus service plays in this our village, serving as a lifeline for many. In response to community concerns, Stagecoach, the service provider, explained the intricate challenges the bus industry currently confronts. Post-Covid, the company has seen a reduction in ridership, with only 80% of the pre-pandemic passenger numbers. Combined with a 20% rise in operational costs, this has led to an unsustainable financial gap of around £12 million for the year.

Stagecoach has taken steps to bridge this gap, including the ongoing consultation about the potential closure of their Kent Road, Cheriton depot. They have also collaborated closely with the passenger transport team at Kent County Council to identify sustainable services, given the expiration of post-Covid support from the Department for Transport in June.

While the cancellation of some services, including Lympne's, was originally planned, certain services have been reinstated due to funding availability. Notably, school buses to Folkestone will be reinstated. However, the company highlighted the challenge of maintaining the Lympne route due to a time penalty associated with the diversion. This makes sustaining the current timetable financially unviable without an additional bus to compensate for revenue shortfalls. In response, Mike Boor, Chair of the Lympne Parish Council, addressed Stagecoach's explanations and expressed community concerns. Cllr Boor questioned the basis for requiring an extra bus and urged transparency in the calculations driving this decision. Cllr Boor emphasized the significance of the bus service for over 1600 residents, including those without personal vehicles. He highlighted that attractions like Port Lympne Animal Park, Lympne Castle, and essential services like Lympne Place (HFT) heavily rely on the service. He underscored that the service cancellation is contrary to the vision of creating a low-car, high-public-transport community, as outlined in the Otterpool Park Planning Application. As the community continues to unite in advocating for accessible transportation, the Lympne Parish Council is unwavering in its commitment to finding a resolution. The Council has also written to the Traffic Commissioner for London and the Southeast, urging a review and investigation into the matter. disruptions to the Lympne Village bus service have ignited a shared determination to secure a solution that benefits all residents. The Parish Council and the community remain resolute in their pursuit of a resolution that upholds the convenience and connectivity essential to village life.



**LYMPNE
CASTLE**

MEDIEVAL BAR

OPEN TO ALL*

TUESDAY-FRIDAY

5PM-10.30PM

FOOD SERVED 5-9PM

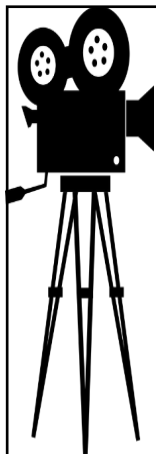
SATURDAY-SUNDAY

12PM-6PM

FOOD SERVED 12-5PM

**Step back in time at
Lymgne Castle**

*** The castle bar may be closed
when there is a private event**



LYMPNE VILLAGE HALL FILM CLUB

IN THE HARRY MARGARY HALL
Films will be shown every 4th Tuesday of
the month (not December).

**MAKE A DATE IN YOUR DIARY FOR
THIS POPULAR VILLAGE EVENT.**

**ALL PROFITS GO TO THE
VILLAGE HALL FUND.**

7.15 for a 7.30 start
FREE MEMBERSHIP

Entrance fee of £5.00 includes refreshments and
lucky draw ticket.

Showing on 22nd August :
Sandra Bullock and Ryan Reynolds in

THE PROPOSAL –

a laugh-out-loud

romantic comedy about a couple who have to pretend
to be engaged in order to keep their jobs.

Showing on 26th Sept: Toy Story 3 – You'll be thrilled
and moved by arguably the best of this franchise.
Packed with action and nostalgia.

We reserve the right to show a substitute film should the need
arise or to refuse admission. Children under 16 must be
accompanied by an adult (ID will be requested).



**ST STEPHEN'S CHURCH, LYPNE
HARVEST SUPPER
SATURDAY 14 OCTOBER 2023**

6.30pm

Lympne Village Hall

And welcoming back

NEW FRONTIER

KENT BASED AMERICANA BAND

TICKETS £15

*To include Ploughman's and Dessert
(Bring a plate, bowl, cutlery, glass and your
preferred drink)*

*Tickets available from Fiona Jarvest email
fionajarvest22@gmail.com*

UPDATE FROM THE VILLAGE HALL CHAIR- We took the
opportunity of the school holidays to replace the
kitchen in the old hall. At the time of writing the units
are all in, the hob and oven are in place and the sinks
are installed. We still have to get the plumbing and
electrics connected up and signed off, but it's looking
good. To keep costs to a minimum the units were built
by volunteers. We are always interested to hear from
people who can donate their time for projects like this
- it saved us thousands of pounds.

Our next big event is the Christmas Fayre, which will
be held on 3rd December this year. We have already
sold some stalls, so if you think you want to run a stall
best book it sooner rather than later. Space is limited,
unlike the Summer Fayre where we have the big outdoors.

Home Instead
SENIOR CARE
To us, it's personal.



A GREAT PLACE TO WORK



JOIN OUR TEAM

- Excellent training
- Great rates of pay
- Previous experience not necessary

Do you have a warm heart and caring nature? Then you sound **perfect** for
us. We are always recruiting for CAREgivers to work with our lovely clients.

www.homeinstead.co.uk/folkestone
300 Cheriton Road, Folkestone, Kent CT19 4DP

Home Instead
SENIOR CARE
To us, it's personal.

Each Home Instead Senior Care franchise office is independently
owned and operated. Copyright © Home Instead 2017

Quilter
Financial
Advisers



Local Financial Advice

Tailored specifically for you

*I live in West Hythe and can help you with advice or reviews, whether
for businesses or personally on any of the following products:*

- ▶ Retirement Planning
- ▶ Investments
- ▶ Mortgage Protection
- ▶ Income Protection
- ▶ Business Protection
- ▶ Inheritance Tax Planning
- ▶ Pensions and Transfer Advice
- ▶ Mortgages and Re-mortgages
- ▶ Critical Illness cover
- ▶ Life Cover

Transferring out of a Final Salary scheme is unlikely to be in the
best interests of most people.

For a FREE initial consultation please contact:

Corinne Gibbons DipPFS CeMAP

Financial Planning Consultant

T. 01303 653425

E. corinne.gibbons@quilterfa.com

W. quilterfinancialadvisers.co.uk

Approver Quilter Financial Services Limited & Quilter Mortgage Planning
Limited. 21 July 2023.

LYMPNE SHORT MAT BOWLS CLUB

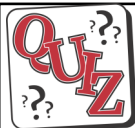
Lympne Short Mat Bowling Club meets every Monday and Thursday from 7.00 to 9.30pm from October until April.

IT IS A SMALL, FRIENDLY CLUB AND WE CURRENTLY HAVE VACANCIES FOR NEW MEMBERS.

Do come along and try your hand at an enjoyable, skillful game.

The first THREE sessions are FREE. There is no need to buy any bowls as the club has a few sets which can be used until you have decided whether you are going to enjoy the game. All you need is a pair of carpet slippers or SMOOTH SOLED SHOES.

Do come long you will be made most welcome. For further details please ring or text 07484377139 or
email:- joyce_groom@btinternet.com



STANFORD WITH POSTLING W I QUIZ NIGHT

Saturday 7th October 2023 at 7pm
at the village hall,

Doors open at 6.30pm £6 per person with 6 people per team, this includes a ploughmans supper with tea / coffee and cake

Please bring your own drinks.

This will be a fun night so do join us , there will also be a raffle and prizes for the winners .

Ring Iona on 01303 238390 to book a table, and we look forward to seeing you

SO, what is MEDITATION, anyway?

Mindfulness meditation is training in awareness.

In today's world there is so much over stimulation resulting in an epidemic of stress, anxiety and depression. Research shows that Mindfulness Meditation supports many different health issues.

I invite you to join me on my

AUTUMN MEDITATION COURSE

Set yourself up for a healthy New Year by learning some wonderful skills to keep your mind fit and to help support your health and wellbeing during these difficult times.

Commencing Saturday 7th October 2023
10.00am - 12.30pm
For 8 weeks
At Lympne Village Hall

For more information and to book a place
Contact Ellen: Tel 01303 230604 or
07740857109

Email: ejarrard2712@gmail.com



David Ian REMOVAL SERVICE FURNITURE & BEDS

LET US MOVE YOU

Providing Flexibility to make your move run smoothly for you

- Local, National & European Removals
- Home Office or Commercial
- House Clearance & Disposal Service Available
- Short Notice No Problem, Same Day Service Available
- Storage Facilities
- Full Packing Service Available
- No Job Too Small
- CALL THE EXPERTS



www.davidianfurniture.com

CALL NOW FOR A FREE QUOTE
01303 264052

Dymchurch Road | Hythe | Kent
Email: sales@davidianfurnitureltd.com



CELEBRATING 150 YEARS!



JOHN WILLIAMS & COMPANY

EST. 1870

Roofing & Building Maintenance
Specialists

When Quality Matters

01303 265198

Your Local Family Business with a National Reputation

www.johnwilliamsroofing.co.uk

Jan and Dilip Sarkar and based on the diaries of the Free French fighter pilot Rene Mouchotte, has been published and is available from Amazon. It has also been the subject of a TV documentary.

Our meeting start time is 7.30pm. Admission £2.

Our November presentation will be presented by Rob Beale concerning B17 Flying Fortress crash landings on Lympne Airfield in WW2.

This month we look at a winner of the Military Medal while defending Lympne Airfield in WW2.

Albert William Vallins, M.M. - A Lympne Airfield Hero

By John Simpson



One of those units defending Lympne in May 1941 was the 147 Light Anti Aircraft Regiment (LAA) of the Royal Artillery. One of their gunners serving at Lympne was Albert (Bert) Vallins, born in Sidcup, Kent on the 6th February 1919. He spent his childhood in Kent and Essex and went on to train as an electrician, setting up a business with another tradesman working all over the south east.

Shortly after the outbreak of war, Bert enlisted in the army on 24th November 1939. He was posted to the Royal Artillery serving in Light Anti Aircraft Batteries of 43 and 147 regiments. In 1940 he was sent to Newhaven where he met his future wife, who lived in his lodgings with her parents. They were married that same year on August 24th.

In May 1941 Bert was at Lympne Airfield, which was attacked on several occasions by low flying Messerschmitt 109 and 110 fighters. On one of these occasions, probably 11th May, he shot down one ME 109 and damaged at least one other. His skill and bravery earned him the Military Medal. The citation read:

'During attacks on an aerodrome by enemy fighter aircraft in May 1941, acting Bombardier Vallins set an outstanding example of courage, speed of action and skilful handling of his weapon. His gun was selected as a target for dive bombing and machine gunning. Bombs fell within 25 yards of his gun. Throughout these attacks he engaged enemy aircraft both when approaching and receding with consummate skill and destroyed at least one enemy aircraft and obtained several other hits. Acting Bombardier Vallins set a fine example of courage and skill which

was fully appreciated by the Royal Air Force'.

On July 5th he was written to by Major Wright of the 147 LAA Battery, Royal Artillery telling him of his award of the Military Medal. On the 2nd December 1941 he was presented with the medal by King George VI at Buckingham Palace. His proud wife Lilian was with him.

In 1942 he was transferred to India to join the fight against the Japanese. He travelled throughout India and Ceylon and on to Burma, He was attached to an Indian regiment becoming Troop Sergeant and Detachment Commander responsible for training new Indian recruits.

He was demobbed in January 1946 and in civilian life joined British Railways at Newhaven harbour. He retired in 1984 living in Newhaven until his death on March 15th 1995. He was survived by his wife Lilian and daughter Dawn.

I am indebted to Mrs Dawn Taylor, nee Vallins, of Peacehaven, East Sussex for bringing this event to my attention in 2019

For information about the Lympne Airfield History Society, contact:
John Simpson on 07508 708725 or email:
johnsimpson43@btinternet.com

SHAL Committee member, Janet Powell, was our speaker in July on the History of Tithes. A tithe was one tenth of the annual produce or earnings formerly taken as a tax for the support of the Church. Over the years it became a source of conflict. Tithes in Britain existed pre-1066 to support priests. By the Middle Ages it was one of the main sources of clergy income as produce from the glebe (church-owned land), either 10th sheaf of wheat or barley or 10th calf or lamb. The crops were distributed in large late medieval tithe storage barns, such as Maidstone and Lenham. In Tudor times farms were strips between two or three arable fields with rights to pastures/meadows. With more modern farming methods a new system redistributed land into smaller enclosures. The C19 Government could not contain lawlessness and discontent over payment of tithes. An 1836 Act requested maps with accuracy of land testified by Commissioners. Consequently there was significant costing providing relief to the poor. Workhouses were built such as one, now the 5 Bells pub at Brabourne, and the Elham one at Etchinghill. Opposition to tithe payments grew in centres such as Sandwich, the Weald and Romney Marsh. The 1930s witnessed increased refusal to pay the tithe by Kent non-conformists - farmers, shopkeepers and businessmen, led by Rev. Roderick Kedward, MP for Ashford. Janet's fascinating insight talk referred to her late husband's grandfather fighting to save his home as furniture was seized for the tithe, and recalled her father paying the tithe even in the late 1940s/early 1950s. At our Tues. 19 Sept. meeting James Holman will give a presentation on *'Mersware: the people of the Marsh from the earliest times'*.

From Studying History and Archaeology in Lympne



After the variable weather over the summer months, lets hope that there will be more sunshine to be had over the next few weeks, but as cooler seasons are ahead it is better to start early and prepare for winter in a leisurely way rather than panic when the first frost is announced. Harvesting remaining vegetables and tidying the borders are the order of the day and by dead heading and feeding flowering plants the garden can remain colourful for a few weeks longer. Lookout for self-seeded plantlets around the borders, these can be moved to more suitable positions to fill in spaces or planted up to be given to friends. Plants for free are always welcome. We are all aware that we need to use less plastic so whether planting up the seedlings or sowing seeds, repurpose containers you have. Be inventive, make a few holes in the bottom of yogurt pots, sweetie tubs or take away cartons and use those. Cut the bottoms off clear plastic drinks bottles to make individual cloches to keep the pots damp. Compost bags can be split and used to line tubs and baskets or weighed down to cover and smother difficult weeds, (this can take a couple of seasons). Check out the garden centres or catalogues for the best bulbs to plant when there is space. Think about bringing in house plants which have been enjoying a holiday in the garden before the nights turn colder. Always check for any pests in the foliage or compost before doing so as they multiply in a warmer environment. Happy gardening.

From the Kent Gardener


ST STEPHENS CHURCH

SERVICES AND EVENTS IN SEPTEMBER

3rd	Parish Communion	11.00 am
10th	Hooba Family Service led by Sunday Club	11.00 am
23rd	Coffee Morning	10.30-12.30am
17th	Parish Communion	11.00 am
24th	Parish Communion	11am

SUNDAY CLUB Meets at **The Lads' Club, Rectory Lane, Saltwood, CT21 4QA, 10-11am during term time.** We have a wonderful time with all sorts of art & crafts and cooking, games and lots of drama. Fun groups for children aged 3-10 years.

The Monday Club for young people aged 11 - 16 years is also held from 5.30 - 7.00 pm at its usual venue. New faces to both groups are always very welcome. For more information ring: Christine Clover on 0300 0301662, text: 07379 877846 or email: christineclover@lympneandsaltwoodchurches.uk.



Come and join us at
Lympne & Saltwood
Toddlers
10 - 11:30am

Thursday mornings in the
Harry Margary Hall,
Aldington Road, Lympne
CT21 4LE



ST STEPHEN'S CHURCH
COFFEE MORNING
SATURDAY 23rd SEPTEMBER
10.30am - 12.30pm

*Come and join us for
coffee, cake and savoury bakes
Well behaved dogs welcome*

*Proceeds to maintenance of the church plus
a donation to this month's nominated
charity:*

Macmillan Cancer Support



Recently, I was reading through 1 Corinthians, which is a letter from St Paul to the people of Corinth, a place I visited in July, 2018. I actually stood on the very spot where anyone wishing to speak publicly would have stood in the time of Paul. And so, it follows that this was the very spot Paul first preached the good news of Jesus to the

Corinthians.

The letter, numbered one of two, as we have two such letters, are believed to be part of a set of four. The letters are in response to the concerns of some of the people in the church in Corinth regarding standards of behaviour within the church. This response has been used throughout the churches' history to give guidance on how Christians should conduct themselves.

I know you are thinking, "well you wouldn't think so by what we so often see today." You would be right. Interpretation is often the cause of debate and sadly, painful disagreement. This is ironic because the letter is intended to do the opposite. We do not have the information Paul received to which he was responding. That would help no end, many suggest. I suggest, the fact we do not have that information encourages us to consider Paul's advice in our own current context.

The difficulty does not lie in what is written, but in the superficial interpretation. Some people try and make what is written support what they believe. When it comes to the Word of God, it means what it is saying to you at that moment in time. The only way to understand what God is sharing with us is to discern such, spiritually. This very letter tells us that the cleverest of people, who without God's spirit, know little of God. Whilst those of whatever ability can, with God's spirit, understand a great deal.

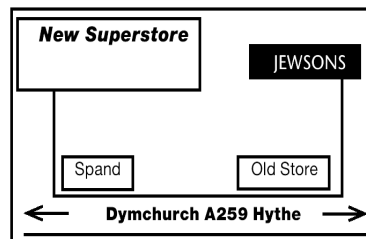
This is the answer we should give when people claim they are Christian but do not need to go to church. We do not go to church to agree with each other. We go to church to support each other as a community, being tolerant of difference whilst lovingly building each other up. It is by serving the will of God in our community, as community, that we are gifted God's insight.

We will never find it doing our own thing. We are only privileged by God's intervention if we live a life for Him. A life that sees us help and love the people around us. Not just those like us, but all people, even those we disagree with. — **REV Barry**

LYMPNE FELLOWSHIP-The Lympne Fellowship enjoyed a delightful August afternoon, picnicking and socializing under the sun after earlier uncertain weather. Regularly meeting on the 2nd Thursday at 1.15 pm in the Harry Margary Hall, they offer engaging talks and activities. For more on the group, contact Jill Page at 01303 263756.

David Ian
FURNITURE & BEDS
SUPERSTORE

Dymchurch Road, Hythe, Kent
01303 264052
Email: sales@davidianfurnitureltd.com



REMOVAL AND STORAGE
CALL NOW FOR A FREE QUOTE
*TERMS & CONDITIONS APPLY

OPEN 6 DAYS A WEEK
Mon - Fri 9am - 5.30pm Sat 9am - 5pm



TRADING STANDARDS



working in partnership with
Checkatrade

10% Discount for Lympne Residents at



OTTERPOOL GARDEN TOWN INVITES YOU TO PARTICIPATE IN CONSULTATION OF PHASE 1B OF THE DEVELOPMENT

The following is from the Otterpool Garden Town Team conducting public consultations-

“We now embark on the next phase of Otterpool Garden Town - Phase 1B, focusing on the enchanting Hilltop and Woodland Ridge character areas. We value your input as an integral part of our community. What's Happening?

Following the success of Phase 1A, which concentrated on the Town Centre and Castle character areas, we're turning our attention to Phase 1B. This phase will be centered around the creation of a stunning Framework Masterplan and Design Code for the Hilltop and Woodland Ridge zones. This design aims to complement and build upon the achievements of Phase 1A. Your Opinion Counts- We believe in the power of your ideas and insights. This is your chance to help shape the Hilltop and Woodland Ridge areas, ensuring they reflect the community's aspirations while maintaining high standards of design and functionality.

Get Involved Join us for these upcoming events:

COMMUNITY PLANNING DAY-Date: Saturday, 9 September- Time: 11:00 AM - 4:00 PM- Venue: Sellindge Village Hall

REPORT BACK OF THE VISION- Date: Wednesday, 20 September-Time: 6:30 PM - 8:00 PM-Venue: Westenhanger Castle

During this session, we will provide an overview of the collective vision that has emerged from the Community Planning Day. This is an opportunity for you to see how your contributions have influenced the initial direction and share your thoughts on the proposed vision.



SCAN ME

phaselb.otterpoolpark.co.uk

Share your feedback online

www.otterpoolpark.org    


OTTERPOOL PARK
COUNTRYSIDE · CONNECTED · CREATIVE

Your participation is vital in creating a town that truly reflects the desires and needs of its residents. Together, we can build a legacy that generations can cherish.”

squiggle

WILLS

TRUSTS

POWER OF
ATTORNEY

PROBATE

Death isn't something most of us want to talk about or think about. And why would we? But what we DO want is for our loved ones to be looked after when we're gone.

And yet, nearly half of us don't have a will or even a plan for our estate when we die. It's something many just don't get round to - despite knowing that we should.

Book your free consultation with Squiggle today.

01233 659796

www.squiggleconsult.co.uk

Squiggle Consult Ltd
11 Park Barn, Evegate Business Park, Mersham, TN25 6SX
Registered Company - 10816512

County and District Councillors Contact details

KCC Councillor Jenni Hawkins

jenni.hawkins@kent.gov.uk

District Councillors

John Wing

john.wing@folkestone-hythe.gov.uk

Jeremy Speakman

jeremy.speakman@folkestone-hythe.gov.uk

CLLR SPEAKMAN WISHES TO REMIND RESIDENTS THAT HE HAS A WARD BUDGET WHICH IS AVAILABLE FOR COMMUNITY GROUPS AND GOOD CAUSES PLEASE CONTACT HIM FOR DETAILS

OIL BOILER SERVICING

INCLUDES NOZZLES & HOSES

£150 +VAT

CONTACT US :

www.baldwinalter.co.uk
office@baldwinalter.co.uk
01304 226611



REFUSE COLLECTION DATES SEPTEMBER 2023

Recycling (Purple Lid/Black Box) and Food Waste will be collected on:

Tuesday 5th and 19th

Non-Recyclables (Green Lid) and Food Waste will be collected on:

Tuesday 12th and 26th

Garden Waste Collections 13th and 27th

Please do not put the lid on the Black Box— use the food waste container or a heavy object.

OVERFLOWING PUBLIC BINS

YOU can report overflowing public bins on line

www.folkestone-hythe.gov.uk/full-bins

LOCAL TRADES

LYMPNE PARISH COUNCIL CANNOT ACCEPT RESPONSIBILITY FOR THE ACCURACY OF ANY OF THE DETAILS ADVERTISED. YOU ARE STRONGLY RECOMMENDED TO TAKE APPROPRIATE ADVICE BEFORE ENTERING INTO ANY COMMITMENT.

STUDIO J HAIR SALON LTD

1a Belcaire Close Lymgne
A small family business
with a big heart

Studio J Hair Salon are excited to introduce the newest member of our growing team - Naomi; she will be starting with us on the 1st September and any new clients will receive 20% off cut and styles.
01303 267877
www.studiojhair.co.uk

VILLAGE HALL BOOKINGS

VISIT

[http://
www.lympnevillagehall.co.uk/
bookings/](http://www.lympnevillagehall.co.uk/bookings/)



ACC ELECTRICAL

Fuse board changes,
cctv,alarms, PAT
testing, smoke alarms,landlord safety
checks,
security,lighting,rewires, smoke
detectors and much more!
Free Quotations and friendly
reliable service
01303 211 011/07595336880
info@accelectrical.co.uk
www.accelectrical.co.uk

CATHERINE'S CLEANING

Over 4 years Cleaning Experience
Regular Cleans
Spring Cleans
Serving Lymgne,Hythe
and surrounding areas.
DBS checked, references on request.
Call or message Catherine on:
07957991266
Email: flower.powercat@hotmail.co.uk

Accountant in the Village
Bookkeeping, CIS and VAT Returns
Sole traders, partnership and
companies accounts preparation
Personal Tax, Business Tax and
Corporation Tax
Tel:Mariana Mackenzie:
07805 653103

TAXI IN THE VILLAGE.

Short, long or any distance.
Airport, docks, etc.
Ask for a quote.
Speak to Geoff
Phone 07703 444 814

LOCAL BATHROOM and KITCHEN FITTER

Reliable, professional,20 years
experience fitting bathrooms, tiling,
plumbing and general building work.
Call Andrew on 07788 728 787 for a
free estimate.



07745 532075

Mobile Foot Health Practitioners.
Treating and managing foot and nail
conditions, corns, callus, fungal,
fingernails, diabetic foot care
www.eastkentfootcare.co.uk



PUNCH & JUDY PLAYGROUP

Quality care and
learning for
2-4 year olds
At Lymgne Village
Hall Term time only
Mon-Fri
8.30am-3pm,
Weds 8.30am-1pm
Tel. no: 07527 111584 e.mail:
info@punch-and-judy.org.uk
or visit www.punch-and-judy.org.uk

DN PLASTERING SERVICES

Local, Trustworthy & Reliable
Over 25 Years Experience
Call Darren 07932 002 442
dnplasteringservices@gmail.com

DILTON MINI SKIP HIRE
Ballast, hardcore, sand,
topsoil supplied. Registered waste
carrier.
Phone 01303 812 448, or
Mobile 07799 433 754

THE BOWEN TECHNIQUE
BOWEN THERAPY IN LYMPNE
Back pain, arthritic pain, asthma,
digestive disorders, migraine,
practically any problem can
potentially be addressed.
Lynne Rodgers, Cert ECBS.
Call 01303 268 910 or
lynnealexrogers@gmail.com

WRAIGHT'S MOWERS
NEWINGREEN (A20)
Servicing,Repairs,Sharpening
Spares and Sales
all makes of petrol & electric mowers.
Benham Water Farm,
Ashford Road (A20)
Newingreen, CT214JD
Opposite old race course
Tel 07733293315

ASHTON TREE CARE
Hedge cutting , stump grinding ,
tree surgery
All work fully insured
Contact 07929 627 622
ashtontreecare@gmail.com

CURTAINS
Handmade
curtains,blinds and soft furnishings.
Curtain alterations.
Call Valery Wren
01303 237 755

PLUMBER
City & Guilds qualified
Affordable, Reliable and Local
All work fully insured and
guaranteed. Wide range of hot
and cold water services. See
website for further details,
rates and customer feedback.
Call now on 07899 034 695
for a no-obligation, free quote
or visit our website:
www.condicoplumbing.co.uk

THE EXECUTIVES SUITE
Virtual Support Service
Remotely supporting time limited
business owners
with administrative tasks.
Travel, diary management,
inbox detox & lifestyle
management.
Contact Natalie Dowsett at
natalie@theexecutivesuite.co.uk



K.P Decorating

- Internal Decorating
- External Decorating
- Plastering
- Access all areas

Call: 07956455720
www.kpdecorate.com

LOCAL TRADES

PAINTING, DECORATING & HANDYMAN

Interior and Exterior – All types undertaken. FREE ESTIMATES.
30 YEARS EXPERIENCE
Call Mick Cockburn
Mobile 07769 221 871



CN ELECTRICAL DOMESTIC & RESIDENTIAL

New Sockets, Fault Finding, Rewires, Lighting, Consumer units and much more!
NICEIC REGISTERED ELECTRICIAN
Contact Chris
Mob : 07826 505671
www.cnelectrical.co.uk
info@cnelectrical.co.uk



TAI CHI

Suitable for all ages and levels of fitness
Every Friday 1215
Lympne Village Hall

www.taichiforyou.co.uk
CONTACT- 07587 167 756

YOUR COMPUTER PROBLEMS SOLVED

Call out service. PC/Laptop repairs, slow running, broken screens, memory upgrades, virus removal, data recovery. Enquiries welcome.
Call Rob Gardener 07807 180 906 or 01304 219 471
Email robert.gardner@talk21.com

Kingdom
CARPET CO.

- Carpets Supplied & Fitted
- Carpets Professionally Cleaned
- Carpets Whip Edged & Cotton Bound

Whatever your carpet need, give us a call for a FREE estimate / assessment.

Over 50 years combined experience.

07943 764 442

Email: kingdom.carpet.co@gmail.com

RICHARD AJ THOMPSON LTD
Plumbing & heating engineer
Gas Safe Registered-No 513449,
22 years experience.
Central heating boiler servicing, repairs and installations.
All domestic plumbing repairs, Water softeners, gas fires, cookers and water heaters.
Landlord's Safety Certificates.
Tel 01303 266 273
Mob 07540 333 250

HANDYMAN AND BUILDING MAINTENANCE

Roofing, Guttering, Plumbing, Drains, Painting, Decorating, Plastering
Free Estimates
References available

Contact 07836 665382

SPOTLIGHT PEST CONTROL SERVICES LTD

British Pest Control Association member.
General pest control including rats, mice, moles, wasps, ants, fleas, bird spikes and general proofing Fast, friendly and reliable.
Contact Dave on 07715211899.
info@spotlightpestcontrolkent.co.uk
www.spotlightpestcontrolkent.co.uk

PIANO LESSONS

Enjoy learning the piano with an experienced teacher in a pleasant home near Lympne Primary School. Children and adults of all abilities welcome. It's never too late to start - just bring your fingers and a love of music!
Contact Kate Chesterman, Bachelor of Music (Hons)
Tel 07807 156 884 or Email: lympnekate@gmail.com

LYMPNE VILLAGE STORES AND POST OFFICE

OPEN from 830-530 weekdays
Saturday 830-2pm
Sundays CLOSED

Visit us for your everyday needs Milk, bread, eggs and your daily newspaper or magazine and the National Lottery.

MUTTS APPRECIATED

Professional Dog Grooming Services
Based in Newingreen
Fully qualified and insured
All breeds welcome
Tel: 07927335947
Instagram: @muttsappreciated

John Williams & Company

Roofing and Building Maintenance
Slating, Tiling, Flat Roofing, Lead-work Gutters, Fascias and Soffits
Brickwork, Carpentry, Plastering
Free Quotations and Advice
Call: 01303 265198
Stone Street, Lympne, CT21 4LD
www.johnwilliamsroofing.co.uk

EX-JOB AND DOGS

Retired local police officer offering
Dog Walking, Dog Day Care
Boarding in Home Environment
Home Watch Service Long/short term
Including Cat Care
Contact Kerry
with your requirements
CONTACT 07791 095 895
exjob17@gmail.com



I'm Michelle, local branch owner for Sales and Lettings for The Good Estate Agent.
We are a 13 year old family run, Nationwide business, with our Head Office in Lympne.
I take pride in my high quality customer service and my doors don't close at 5pm!
For a Free Sales or Lettings valuation please call 07848015443 or email
michelleferbrache@thegood.co.uk

REMOTE WORK OFFERED VIRTUAL ASSISTANT & GENERAL ADMIN SUPPORT

I can offer a range of support on an ad-hoc hourly, weekly or monthly basis.

- Checking & responding to emails & customer queries, record-keeping, diary management, typing, etc;
 - Facebook Group admin;
 - Zoom calls;
 - Proofreading, Copy Editing;
 - Excel Databases.
- For specific requirements, please ask.

I have a broad range of experience.
I am detail-orientated, reliable, resourceful, self-motivated, and an adept communicator.
Steffie Betts - gmstieffie@gmail.com