



Urgent Call to Action: Lymgne's Fight to Restore the Number 10 Bus!

In the latest Parish Council meeting, Lymgne villagers came together to share their heartfelt stories of how the loss of the Number 10 bus has impacted their lives. The room was filled with determination, and it was clear that we are all in this together.

A STRANDED COMMUNITY RALLIES! - Residents painted a stark picture of the challenges they have been facing. Children left stranded at bus stops, elderly individuals walking long distances with heavy bags, and the dangerous prospect of pedestrians navigating Otterpool Lane - these are just a few of the issues brought to the forefront. It's undeniable, Lymgne has become isolated without reliable transportation, and this must change.

SAFETY MATTERS!- Safety concerns were raised, and rightfully so. With winter approaching, the thought of our community members braving harsh weather conditions just to access essential services or attend medical appointments is absolutely unacceptable.

OUR COUNCIL'S COMMITMENT! - Our dedicated council members outlined the actions they've already taken and made it clear that this issue won't be brushed aside. They are determined to work tirelessly to resolve the transportation problem in our village. KCC Councilor Hawkins even highlighted the availability of grants for setting up community buses from October, though it was acknowledged that this could affect the yearly Parish precept.

UNITY IS OUR STRENGTH! - In conclusion, the urgency and gravity of the situation were highlighted, and Lymgne's united front was clear. Together, we are committed to ensuring that Lymgne once again has access to essential public transportation. This shared commitment was the central theme of the meeting, and we are all dedicated to finding a solution to this pressing concern.

TAKING ACTION! - It was agreed that the Parish Clerk would continue to contact and press the appropriate authorities, including the press, to highlight Lymgne's plight. Furthermore, the Stagecoach Area manager's recent comments at the Joint Transportation Board meeting were promising, indicating that Lymgne was heard loud and clear. There's potential for building up a less frequent service, which is a step in the right direction.

STAY INFORMED, STAY INVOLVED! - This fight is far from over, and your support is vital. Stay informed about developments, and if you have a story to share or want to get involved, don't hesitate to reach out to the council or your neighbours.

Together, we will do our best to bring back the Number 10 bus and ensure that Lymgne thrives with the transportation it deserves.

Watch this space for more updates!

CALL TO ACTION

Act Now to Save Our Bus Service: Your Voice Matters! As bus services dwindle, it impacts accessibility, the environment, the economy, and community connectivity. To make a difference: write to your Parish Clerk, local MP, District and County Councillors, the press, and the bus company. Local buses are a lifeline for many, reduce pollution, boost the economy, and foster community bonds.

No action yields no results. Your collective voice can inspire change. Advocate for preserving and improving bus services today, ensuring they remain a vital part of our communities and the environment. Your action matters; don't let this service fade away.

SEND YOUR VIEWS TO THE CLERK at lympnepc@outlook.com or write to The Parish Council C/O 29 Honeywood Close Lymgne



LYMPNE
CASTLE

MEDIEVAL BAR

OPEN TO ALL*

TUESDAY-FRIDAY

5PM-1030PM

FOOD SERVED 5-9PM

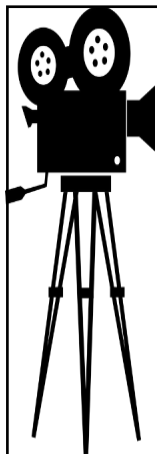
SATURDAY-SUNDAY

12PM-6PM

FOOD SERVED 12-5PM

Step back in time at
Lymgne Castle

* The castle bar may be closed
when there is a private event



LYMPNE VILLAGE HALL FILM CLUB

IN THE HARRY MARGARY HALL
Films will be shown every 4th Tuesday of
the month (not December).

**MAKE A DATE IN YOUR DIARY FOR
THIS POPULAR VILLAGE EVENT.**

**ALL PROFITS GO TO THE
VILLAGE HALL FUND.**

7.15 for a 7.30 start
FREE MEMBERSHIP

Entrance fee of £5.00 includes refreshments and
lucky draw ticket.

Showing on 24th October :

Made in Dagenham

*Set in the Swingin' Sixties, this is the inspiring
story of women who made history. Sally
Hawkins and Bob Hoskins lead a stellar British
cast*

Showing on 28th November: **Charade** – Cary Grant
and Audrey Hepburn star in this romantic comedy/ mystery
classic of 1963

We reserve the right to show a substitute film should the need
arise or to refuse admission. Children under 16 must be
accompanied by an adult (ID will be requested).



ST STEPHEN'S CHURCH, LYPMPNE
HARVEST SUPPER
SATURDAY 14 OCTOBER 2023

6.30pm

Lympne Village Hall

And welcoming back

NEW FRONTIER

KENT BASED AMERICANA BAND

TICKETS £15

*To include Ploughman's and Dessert
(Bring a plate, bowl, cutlery, glass and your
preferred drink)*

*Tickets available from Fiona Jarvest email
fionajarvest22@gmail.com*

LYMPNE SHORT MAT BOWLS CLUB

Lympne Short Mat Bowling Club meets every
Monday and Thursday from 7.00 to 9.30pm from
October until April.

**IT IS A SMALL, FRIENDLY CLUB AND WE CURRENTLY
HAVE VACANCIES FOR NEW MEMBERS.**

**Do come along and try your hand at an enjoyable,
skillful game.**

The first THREE sessions are FREE. There is no need
to buy any bowls as the club has a few sets which can
be used until you have decided whether you are
going to enjoy the game. All you need is a pair of
carpet slippers or **SMOOTH SOLED SHOES.**

Do come long you will be made most welcome.
For further details please ring or text 07484377139

or

email:- joyce_groom@btinternet.com

Home Care With a Difference



Tailor made to your individual requirements

- Award winning care
- Personal care services
- Companionship services
- Highly trained CAREGivers
- Home help services

If someone in your family needs a little help
please call us on **01303 847899**

www.homeinstead.co.uk/folkestone
300 Cheriton Road, Folkestone, Kent, CT19 4DP

Home Instead
SENIOR CARE
To us, it's personal.

Each Home Instead Senior Care® franchise office is independently
owned and operated. Copyright © Home Instead 2017.

Quilter
Financial
Advisers

Local Financial Advice

Tailored specifically for you

*I live in West Hythe and can help you with advice or reviews, whether
for businesses or personally on any of the following products:*

- ▶ Retirement Planning
- ▶ Investments
- ▶ Mortgage Protection
- ▶ Income Protection
- ▶ Business Protection
- ▶ Inheritance Tax Planning
- ▶ Pensions and Transfer Advice
- ▶ Mortgages and Re-mortgages
- ▶ Critical Illness cover
- ▶ Life Cover

Transferring out of a Final Salary scheme is unlikely to be in the
best interests of most people.

For a FREE initial consultation please contact:

Corinne Gibbons DipPFS CeMAP

Financial Planning Consultant

T. 01303 653425

E. corinne.gibbons@quilterfa.com

W. quilterfinancialadvisers.co.uk

Approver Quilter Financial Services Limited & Quilter Mortgage Planning
Limited. 21 July 2023.

KENT GARDENER

October heralds the onset of colder days and darker nights. Remove spent annuals, cut back the softer perennial growth but not the more rigid stems which are useful to insects and protect the crown. Round up the last of the fruit and vegetables. Replace summer bedding in containers and borders with plants for winter colour. Check tender plants before moving to a sheltered position and remove pests from the foliage or soil to prevent excess damage. Remove saucers from under pots and raise on feet to help drainage. House plants need a tray of damp gravel under their pots to counteract the dry air of central heating. Succulents need to be kept dry in winter. If you have fruit trees prevent damage by codling moth caterpillars by applying sticky bands or glue round the trunk and stake to stop the wingless females crawling up the bark and laying their eggs on branches. The eggs hatch at bud burst and the caterpillars nibble their way into developing fruit. Have a try at increasing your perennials by root cuttings. Lift a healthy plant when dormant, wash the roots and select young thick roots, cut near the crown with a sharp blade. Don't take more than a third of the root system. Discard the ends and lateral roots aiming for cuttings 5-10cm long, horizontal at the top, angled at the bottom. Place in a pot of moist, free draining compost, tops flush with the surface. Cover with grit and place on a cool windowsill or cold frame. In spring look for roots, repot successful ones and grow on to plant out when big enough. Happy gardening.



In Loving Memory of John Allen
John Allen, born on July 25, 1936, and passing away on September 5, 2023, was a remarkable individual whose life was defined by unwavering dedication and compassion. Hailing from Canterbury, he discovered his lifelong passion for football at an early age.

In his thirties, John transitioned to becoming a referee in the Kent League, where he earned the respect of players and fans alike for his fairness and expertise. His refereeing spanned over five decades, officiating matches for numerous local teams, including the Benegal Tigers and Saracens, and even sending off Danny Dyer of EastEnders fame during a charity game. Known as the league's best referee and affectionately referred to as a legend, John retired at the impressive age of 81 when his legs could no longer keep pace with his indomitable spirit. John's dedication extended beyond the football field. He became the Neighbourhood Watch coordinator for Belcaire Close in Lympe Village, offering reassurance and security to his neighbours, especially during the winter months. In 2001, he and his wife, Lena, rowed from Hythe to Seabrook and back, raising £1,132 to help reopen the village shop.

In September, John passed away unexpectedly at the age of 87. His memory lives on as a legendary referee, a devoted community member, a loving husband, and a symbol of integrity and kindness. May he rest in eternal peace.

David Ian

REMOVAL
SERVICE

FURNITURE & BEDS

LET US MOVE YOU

Providing Flexibility to make your move run smoothly for you

- Local, National & European Removals
- Home Office or Commercial
- House Clearance & Disposal Service Available
- Short Notice No Problem, Same Day Service Available
- Storage Facilities
- Full Packing Service Available
- No Job Too Small
- CALL THE EXPERTS



www.davidianfurniture.com

CALL NOW FOR A FREE QUOTE

01303 264052

Dymchurch Road | Hythe | Kent

Email: sales@davidianfurnitureltd.com



CELEBRATING 150 YEARS!



JOHN WILLIAMS & COMPANY

EST. 1870

Roofing & Building Maintenance
Specialists

When Quality Matters

01303 265198

Your Local Family Business with a National Reputation

www.johnwilliamsroofing.co.uk

LYMPNE AIRFIELD HISTORY SOCIETY

We had a very enjoyable presentation by the ex BBC news reader Jan Leeming for our last meeting in September. Jan talked about the Free French fighter pilot Rene Mouchotte, who has been the subject of a new book and TV documentary. Our November 7th presentation will be about the **WW2 crash landings of several B17 Flying Fortress bombers on Lympne Airfield**. Rob Beale will be our presenter on the night. Our meeting start time is 7.30pm. Admission £2.



This month we look at a household name who was a WW1 ferry pilot at Lympne.

BLUEBIRDS OVER THE CHANNEL

By John Simpson

One of the ferry pilots taking aircraft over to the Western Front from Lympne was Sir Malcolm Campbell (1885 - 1948) of *Bluebird* fame. From his autobiography *My Thirty Years of Speed* we learn that at the outbreak of war he volunteered as a dispatch rider whilst serving at Mons in the 5th Battalion Royal West Kent Regiment. He had applied for a commission which was accepted early on, but he only found out he had been successful in February 1915 five months after it had been approved. He became 2nd Lieutenant Campbell, and one year later he volunteered for the Royal Flying Corps, passing out as a pilot at Gosport in 1916. His instructors considered he was too clumsy to be a fighter pilot, and recommended he become a ferry pilot and was sent to No. 8 Acceptance Park at Lympne.

He regularly flew aircraft in both directions delivering to France and returning those marked *Unfit for Further Flying Service* back from St. Omer across the Channel. Many of these flights were 'hairy' as they could be riddled with bullet holes or falling apart. On one such flight he was accompanied by a newly qualified Observer, and nearly had to ditch in the sea near to a ship, but the engine recovered and burst back into

life and they made it back to Lympne. The Observer who had never flown before ran away after climbing out of the aeroplane, never to be seen again by Campbell. It was not unknown for him to fly up to six crossings in a day. He remembers one occasion when there were forty to fifty aircraft stacked up in bad weather at Lympne. He was known for volunteering to fly in bad weather when other ferry pilots had stayed firmly on the ground.

At the end of his ferry flying duties he wrote a book and published it at his own expense for new cadet airmen entitled *Hints to Beginners on Flying*.

Malcolm Campbell had earlier designed and built his own aeroplane, inspired by Louis Bleriot's first flight across the Channel in 1909. His design was none too successful, and never flew more than a few short hops into the air. He would become a household name on terra firma racing cars, and together with his son Donald became famous for the legend that was known as *Bluebird*.

For information about the Lympne Airfield History Society, contact:
John Simpson on 07508 708725 or email:
johnsimpson43@btinternet.com

FROM STUDYING HISTORY AND ARCHAEOLOGY IN LYMPNE

The theme of our September meeting was 'New Romney: the evolution of a medieval port town' presented by James Holman, Senior Project Manager at Canterbury Archaeological Trust, based on his involvement in excavations there between 2005-7. No port has been found at Old Romney but a single shingle road led to a settlement supporting a fishery. New Romney had been a late Anglo-Saxon planned town for many years (700-800AD) but had a primary road on sand which regularly collapsed. A huge storm in 1287 resulted in development of a harbour (Romney Haven), allowing it to trade in pitch and timber from Holland and slate from Cornwall. A build up of silt soon ended the port and it became a fishing town trading at E Anglian fishing fairs for pottery from Norfolk and Yorkshire. By 1614 New Romney had a linear layout of properties, with the church at the head similar to that at Winchelsea, and a 1800s tithe map showed plots 5m wide, based on tithe map boundaries. James' fascinating talk concluded that New Romney became a small market town with the main activity of fishing processing, situated towards the church.

Our excavation in August under the direction of archaeologist Richard Taylor again produced some interesting discoveries whilst complementing the 2017 - 2019 geophysical surveys. A considerable amount of material - shell, bone, building material, pottery and a large number of coins were unearthed. The coins spanned as early as the reign of Hadrian (117-138AD) to as late as the reign of Valentinian (364-378AD). These finds supported our view that there was Roman military activity on the site over a long period and has added to our knowledge of the extent of the layout of Roman Lympne.

The next meeting is on 17th October at 7.30pm when Chris Shaw of Shornecliff Trust will talk on 'Shornecliff Barracks and Sea Defences'.

ST STEPHENS CHURCH

SERVICES AND EVENTS IN OCTOBER

1st Parish Communion	11.00 am
8th Hooba Family Service led by Sunday Club	11.00 am
14th Harvest Supper-Lympne Village Hall	7pm
15th Morning Worship	11.00 am
22nd Parish Communion	11.00 am
29th Benefice Communion Lympne	11am

SUNDAY CLUB Meets at The Lads' Club, Rectory Lane, Saltwood, CT21 4QA, 10-11am during term time. We have a wonderful time with all sorts of art & crafts and cooking, games and lots of drama. Fun groups for children aged 3-10 years.

The Monday Club for young people aged 11 - 16 years is also held from 5.30 - 7.00 pm at its usual venue. New faces to both groups are always very welcome.
For more information ring: Christine Clover on 0300 0301662, text: 07379 877846 or email: christineclover@lympneandsaltwoodchurches.uk.



Come and join us at Lympne & Saltwood Toddlers 10 - 11:30am
Thursday mornings in the Harry Margary Hall, Aldington Road, Lympne CT21 4LE



**ST STEPHEN'S CHURCH
COFFEE MORNING
SATURDAY 21st OCTOBER
10.30am - 12.30pm**

*Come and join us for
coffee, cake and savoury bakes
Well behaved dogs welcome*

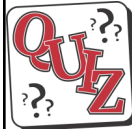
*Proceeds to maintenance of the church plus
a donation to this month's nominated
charity:
WATER AID*

Lympne Village Nativity – Sunday 17 December



Date for your Diary:

The Church and Castle are planning a big Nativity to involve the village community. Donkeys, Camels, Procession. Start 1pm. End about 3pm. Any actors wanting to take part please get in touch via lympnechurch@gmail.com



STANFORD WITH POSTLING W I

QUIZ NIGHT

Saturday 7th October 2023 at 7pm at the village hall, Doors open at 6.30pm £6 per person with 6 people per team, this includes a ploughmans supper with tea / coffee and cake Please bring your own drinks. This will be a fun night so do join us , there will also be a raffle and prizes for the winners . Ring Iona on 01303 238390 to book a table, and we look forward to seeing you

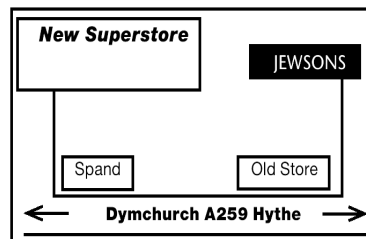
Lympne Fellowship In September we were delighted to welcome back Andrew Ashton who helped us to think about "Every Picture Tells a Story". He gave us an insight into the study of paintings, why the artist painted that particular picture, looking for clues to see what was happening, eg one family pictured in what had been a clearly wealthy home, but with auction lot tickets on every item, the 'husband' holding indicators of gambling, the body language of both he and his 'wife' and so on. A very interesting talk. Lympne Fellowship normally meets at 1.15pm in the Harry Margary Hall on the 2nd Thursday of the month, with a programme of interesting and informative talks and activities. For further information about our group, please contact Jill Page on 01303 263756.

David Ian
FURNITURE & BEDS
SUPERSTORE

Dymchurch Road, Hythe, Kent

01303 264052

Email: sales@davidianfurnitureltd.com



REMOVAL AND STORAGE
CALL NOW FOR A FREE QUOTE
*TERMS & CONDITIONS APPLY

OPEN 6 DAYS A WEEK

Mon – Fri 9am - 5.30pm Sat 9am - 5pm



**TRADING
STANDARDS**

APPROVED

working in partnership with
Checkatrade

10%
Discount
for
Lympne
Residents
at

David Ian
FURNITURE & BEDS
SUPERSTORE

COULD THERE BE AN END TO BUS TRANSPORT MISERY?

During the preparation of this newsletter's front page, an observant resident, who had been closely following the latest District Council meeting online, caught wind of an interesting development. District Council Leader, Cllr Jim Martin, hinted that StageCoach is exploring the possibility of reinstating bus service to our village.

Prompted by this news, the Parish Clerk wasted no time and reached out to StageCoach's Area Manager, Mr. Joel Mitchell, seeking confirmation. Mr. Mitchell responded, revealing that he's been actively listening to feedback, including the real-life stories shared through the Clerk. He assured us that every effort is being made to restore the service without requiring an additional bus. While no concrete promises have been made, this is a crucial juncture. It remains vital that we continue to voice our concerns and lobby those who hold the power to effect change. However, let's consider Mr. Mitchell's statement optimistically; perhaps he will indeed keep his word. In his final email, he emphasized that it will take a collective effort to encourage people to use the service once more. Stay engaged, stay hopeful, and let's work together to improve our options!"

REFUSE

COLLECTION DATES

OCTOBER 2023

Recycling (Purple Lid/ Black Box) and Food Waste will be collected on:

Tuesday 3rd, 17th and 31st
Non-Recyclables (Green Lid) and Food Waste will be collected on:

Tuesday 10th and 24th
Garden Waste Collections
11th and 25th

Please do not put the lid on the Black Box—use the food

squiggle

WILLS

TRUSTS

POWER OF ATTORNEY

PROBATE

Death isn't something most of us want to talk about or think about. And why would we? But what we DO want is for our loved ones to be looked after when we're gone.

And yet, nearly half of us don't have a will or even a plan for our estate when we die. It's something many just don't get round to – despite knowing that we should.

Book your free consultation with Squiggle today.

01233 659796

www.squiggleconsult.co.uk

Squiggle Consult Ltd
11 Park Barn, Evegate Business Park, Mersham, TN25 6SX
Registered Company - 10816512

County and District Councillors Contact details

KCC Councillor Jenni Hawkins

jenni.hawkins@kent.gov.uk

District Councillors

John Wing

john.wing@folkestone-hythe.gov.uk

Jeremy Speakman

jeremy.speakman@folkestone-hythe.gov.uk

CLLR SPEAKMAN WISHES TO REMIND RESIDENTS THAT HE HAS A WARD BUDGET WHICH IS AVAILABLE FOR COMMUNITY GROUPS AND GOOD CAUSES PLEASE CONTACT HIM FOR DETAILS

OIL BOILER SERVICING

INCLUDES NOZZLES & HOSES

£150 +VAT

CONTACT US :

www.baldwinalter.co.uk
office@baldwinalter.co.uk
01304 226611

baldwin
salter



Private Home Care

Specialists in 1-to-1 home care of elderly and vulnerable people

- Medication
- Personal Care
- Security Checks
- Outings
- Domestic
- Wake / Sleep Nights
- Live in

Disability Cars for our clients available 24 hours a day



Office at 7 Great Conduit Street, Hythe

☎ 01303 847422

☎ 0756 3636 332

✉ privatehomecarekent@gmail.com

🌐 Privatehomecare.co.uk

LOCAL TRADES

LYMPNE PARISH COUNCIL CANNOT ACCEPT RESPONSIBILITY FOR THE ACCURACY OF ANY OF THE DETAILS ADVERTISED. YOU ARE STRONGLY RECOMMENDED TO TAKE APPROPRIATE ADVICE BEFORE ENTERING INTO ANY COMMITMENT.

STUDIO J HAIR SALON LTD

1a Belcaire Close Lympe
A small family business
with a big heart

Studio J Hair Salon are excited to introduce the newest member of our growing team - Naomi; she will be starting with us on the 1st September and any new clients will receive 20% off cut and styles.
01303 267877
www.studiojhair.co.uk

VILLAGE HALL BOOKINGS

VISIT

[http://
www.lympnevillagehall.co.uk/
bookings/](http://www.lympnevillagehall.co.uk/bookings/)



ACC ELECTRICAL

Fuse board changes,
cctv,alarms, PAT
testing, smoke alarms,landlord safety
checks,
security,lighting,rewires, smoke
detectors and much more!
Free Quotations and friendly
reliable service
01303 211 011/07595336880
info@accelectrical.co.uk
www.accelectrical.co.uk

CATHERINE'S CLEANING

Over 4 years Cleaning Experience
Regular Cleans
Spring Cleans
Serving Lympe,Hythe
and surrounding areas.
DBS checked, references on request.
Call or message Catherine on:
07957991266
Email: flower.powercat@hotmail.co.uk

TAXI IN THE VILLAGE.

Short, long or any distance.
Airport, docks, etc.
Ask for a quote.
Speak to Geoff
Phone 07703 444 814

LOCAL BATHROOM and KITCHEN FITTER

Reliable, professional,20 years
experience fitting bathrooms, tiling,
plumbing and general building work.
Call Andrew on 07788 728 787 for a
free estimate.

DN PLASTERING SERVICES

Local, Trustworthy & Reliable
Over 25 Years Experience
Call Darren 07932 002 442
dnplasteringservices@gmail.com



07745 532075

Mobile Foot Health Practitioners.
Treating and managing foot and nail
conditions, corns, callus, fungal,
fingernails, diabetic foot care
www.eastkentfootcare.co.uk



PUNCH & JUDY PLAYGROUP

Quality care and
learning for
2-4 year olds
At Lympe Village
Hall Term time only
Mon-Fri
8.30am-3pm,
Weds 8.30am-1pm
Tel. no: 07527 111584 e.mail:
info@punch-and-judy.org.uk
or visit www.punch-and-judy.org.uk

THE BOWEN TECHNIQUE

BOWEN THERAPY IN LYMPNE
Back pain, arthritic pain, asthma,
digestive disorders, migraine,
practically any problem can
potentially be addressed.
Lynne Rodgers, Cert ECBS.
Call 01303 268 910 or
lynnealexrogers@gmail.com

CURTAINS

Handmade
curtains,blinds and soft furnishings.
Curtain alterations.
Call Valery Wren
01303 237 755

WRAIGHT'S MOWERS

NEWINGREEN (A20)
Servicing,Repairs,Sharpening
Spares and Sales
all makes of petrol & electric mowers.
Benham Water Farm,
Ashford Road (A20)
Newingreen, CT214JD
Opposite old race course
Tel 07733293315

ASHTON TREE CARE

Hedge cutting , stump grinding ,
tree surgery
All work fully insured
Contact 07929 627 622
ashtontreecare@gmail.com

PLUMBER

City & Guilds qualified
Affordable, Reliable and Local
All work fully insured and
guaranteed. Wide range of hot
and cold water services. See
website for further details,
rates and customer feedback.
Call now on 07899 034 695
for a no-obligation, free quote
or visit our website:
www.condicoplumbing.co.uk

THE EXECUTIVES SUITE

Virtual Support Service
Remotely supporting time limited
business owners
with administrative tasks.
Travel, diary management,
inbox detox & lifestyle
management.
Contact Natalie Dowsett at
natalie@theexecutivesuite.co.uk



K.P Decorating

- Internal Decorating
- External Decorating
- Plastering
- Access all areas

Call: 07956455720
www.kpdecorate.com

LOCAL TRADES

PAINTING, DECORATING & HANDYMAN

Interior and Exterior – All types undertaken. FREE ESTIMATES.
30 YEARS EXPERIENCE
Call Mick Cockburn
Mobile 07769 221 871



CN ELECTRICAL DOMESTIC & RESIDENTIAL

New Sockets, Fault Finding, Rewires, Lighting, Consumer units and much more!
NICEIC REGISTERED ELECTRICIAN
Contact Chris
Mob : 07826 505671
www.cnelectrical.co.uk
info@cnelectrical.co.uk



TAI CHI

Suitable for all ages and levels of fitness
Every Friday 1215
Lympne Village Hall

www.taichiforyou.co.uk
CONTACT- 07587 167 756

YOUR COMPUTER PROBLEMS SOLVED

Call out service. PC/Laptop repairs, slow running, broken screens, memory upgrades, virus removal, data recovery. Enquiries welcome.
Call Rob Gardener 07807 180 906 or 01304 219 471
Email robert.gardner@talk21.com

Kingdom
CARPET CO.

- Carpets Supplied & Fitted
- Carpets Professionally Cleaned
- Carpets Whip Edged & Cotton Bound

Whatever your carpet need, give us a call for a FREE estimate / assessment.

Over 50 years combined experience.

07943 764 442

Email: kingdom.carpet.co@gmail.com

RICHARD AJ THOMPSON LTD
Plumbing & heating engineer
Gas Safe Registered-No 513449,
22 years experience.
Central heating boiler servicing,
repairs and installations.
All domestic plumbing repairs,
Water softeners, gas fires, cookers
and water heaters.
Landlord's Safety Certificates.
Tel 01303 266 273
Mob 07540 333 250

HANDYMAN AND BUILDING MAINTENANCE

Roofing, Guttering,
Plumbing, Drains,
Painting, Decorating,
Plastering
Free Estimates
References available

Contact 07836 665382

SPOTLIGHT PEST CONTROL SERVICES LTD

British Pest Control Association member.
General pest control including rats, mice, moles, wasps, ants, fleas, bird spikes and general proofing Fast, friendly and reliable.
Contact Dave on 07715211899.
info@spotlightpestcontrolkent.co.uk
www.spotlightpestcontrolkent.co.uk

PIANO LESSONS

Enjoy learning the piano with an experienced teacher in a pleasant home near Lympne Primary School. Children and adults of all abilities welcome. It's never too late to start - just bring your fingers and a love of music!
Contact Kate Chesterman,
Bachelor of Music (Hons)
Tel 07807 156 884 or Email:
lympnekate@gmail.com

LYMPNE VILLAGE STORES AND POST OFFICE

OPEN from 830-530 weekdays
Saturday 830-2pm
Sundays CLOSED

Visit us for your everyday needs Milk, bread, eggs and your daily newspaper or magazine and the National Lottery.

MUTTS APPRECIATED

Professional Dog Grooming Services
Based in Newingreen
Fully qualified and insured
All breeds welcome
Tel: 07927335947
Instagram: @muttsappreciated

John Williams & Company

Roofing and Building Maintenance
Slating, Tiling, Flat Roofing, Lead-work Gutters, Fascias and Soffits
Brickwork, Carpentry, Plastering
Free Quotations and Advice
Call: 01303 265198
Stone Street, Lympne, CT21 4LD
www.johnwilliamsroofing.co.uk

EX-JOB AND DOGS

Retired local police officer offering
Dog Walking, Dog Day Care
Boarding in Home Environment
Home Watch Service Long/short term
Including Cat Care
Contact Kerry
with your requirements
CONTACT 07791 095 895
exjob17@gmail.com



I'm Michelle, local branch owner for Sales and Lettings for The Good Estate Agent.
We are a 13 year old family run, Nationwide business, with our Head Office in Lympne.
I take pride in my high quality customer service and my doors don't close at 5pm!
For a Free Sales or Lettings valuation please call 07848015443 or email
michelleferbrache@thegood.co.uk

UK Health Security Agency



Flu and Covid-19 spread more easily in winter and can cause you serious illness.

GET WINTER STRONG ✓

Come forward for your flu and Covid-19 vaccinations when invited.



Vaccination is the best way to protect yourself, those around you and the NHS.