

LYMPNE NEWSLETTER

JUNE 2023



DELIVERED TO HOMES IN LYMPNE, NEWINGREEN COURT-AT-STREET AND WEST HYTHE ROAD

IN THIS MONTHS ISSUE PRINCES PARADE SAVED OTTERPOOL MOVING FORWARD, LYMPNE CASTLE NEWS AND MUCH MORE

PRINCES PARADE SAVED- OTTERPOOL MOVES FORWARD.

The 24th May saw the Annual meetings of the Folkestone and Hythe District Council with lots of new faces taking up strategic roles. Full details can be found on their website. There was an air of enthusiasm and excitement as the new Council found their feet and elected Cllr Abena Akuffo-Kelly as the Chair of the District Council to a round of applause. Further applause and cheers filled the Council chamber after the election of Cllr Jim Martin as the leader of the Council, taking over from Mr Monk, when he gave his speech.

The intention of the District Council is to remove the current Cabinet structure and move back to Committee making decisions which he said would give Councillors more of a voice in making decisions for the community. To do this a coalition to run the administration would be created between the Green Party and the Liberal Democrats.

The biggest cheers came next- He reported that in June 2019 the Council agreed that the permission to withdraw the application for Princes Parade had been agreed. This was never included in an agenda or ratified by the Cabinet. Described as a “flagrant breach of the democratic process” it led to the wasting of millions of pounds of local peoples money. He then went on to say that although there are a “complex set of obstacles to remove” and that it will take some time and in his words “I can state this evening very clearly that Princes Parade is saved”



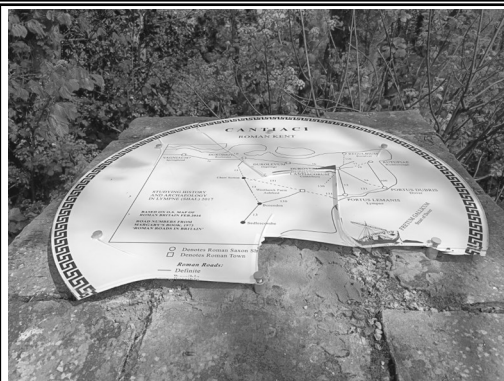
SO WHY IS THIS RELEVANT TO US IN LYMPNE. With big changes in the make up of the District Council and the move to giving District Councillors more of a voice, perhaps now we may as a community be able to influence the future of the Otterpool Garden Town. It is probably safe to say that it is unlikely it will be stopped, but perhaps now we as a community will actually be consulted properly and our District Council will listen to our concerns around infrastructure and services. This week the attached map was sent to the Parish Council. It is within the Planning Application and can be viewed by anyone. Along with the map we are informed that the next

phase of the site Phase 1B which is tier 2 in planning terms affects part of our Parish. Consultants JTP have been appointed to start work on the detailed master planning and design for this phase looking at “Hill Top”, which is in Sellindge Parish and “Woodland Ridge” which is in our parish. The consultants are keen to get local representatives involved early in these plans. The intention is to set up a community liaison group of around 30 people for this design process to represent the wider interests of the community. More information is to follow.

So was this just coincidence or has the Parish Council insistence of more consultation and openness with our community about the plans finally hit the mark. Only time will tell, but this must be seen for what it is a positive step in engaging with us.

The idea of a Garden Town has been with us since 2015 and for many who have been monitoring its progress a sense of “planning fatigue” may have set in. Now more than ever it is so important for all of us who will be living here in years to come to be aware of the plans and get involved and make comments for or against as the ideas and applications as they come through.

The planning application for Otterpool is Y19/0257/FH and their website is www.otterpoolpark.org

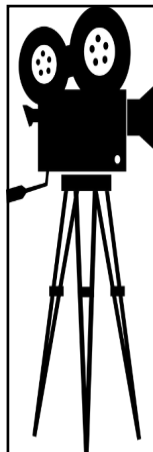


VANDALISM TO SHAL'S PLINTH ON THE ESCARPMENT Sadly it was discovered recently that the plan of Roman Roads in Kent, set on top of the plinth overlooking Stuffall, had been vandalised beyond repair. This is the third time this has happened, the original having been completely removed, and the replacement cracked in an attempt to remove it and now completely broken. SHAL is a small but enthusiastic and active group, but we cannot afford to keep replacing this plaque. We are looking at an even more vandal-proof material but this will cost at least £200. Any donations towards the cost would be very gratefully received. Bank details are:- Account Name: Studying History and Archaeology in Lymgne Sort Code: 23-05-80 A/c No:

KENT GARDENER

The summer season starts in June so let's hope the weather knows this. As I write this, we are still having some unseasonal cold winds and nights. Though plants are growing strongly don't hurry hardening off. Tying up or supporting tall growth is necessary as is watering. Sun and wind dry the compost quickly and leaves can scorch. Some peat free composts dry quickly at the top but remain wet beneath so drain the pots well. Cut back and feed early flowerers e.g., primula, pulmonaria, aquilegia etc. This encourages new growth and occasionally flowers later. Look for seedlings of existing plants and pot up. A plant for free. Prune spring flowering shrubs which have gone over to make room for new growth which will carry next year's blooms. Daffodil foliage can be cleared 6 weeks after the flowers have faded. If you do not lift the bulbs mark them or take a photo, so you remember where they are. In the past I have tried to plant summer bedding and bulbs have appeared. If this happens either replant more deeply or dry off and store in paper bag until autumn. In the vegetable plot you will need to net the fruit as it ripens, the birds are quicker than us. Make the net very taut, so the birds do not become entangled. Keep an eye open for mouldy fruit and remove so it does not spread. The greenhouse will need shading to reduce the temperature. Tomatoes, peppers etc need watering regularly. I use French marigolds as companion plants, and they do seem to keep the white fly away.

Happy gardening.



LYMPNE VILLAGE

HALL

FILM CLUB

IN THE HARRY MARGARY HALL
Films will be shown every 4th Tuesday of the month (not December).

MAKE A DATE IN YOUR DIARY FOR THIS POPULAR VILLAGE EVENT.

ALL PROFITS GO TO THE VILLAGE HALL FUND.

7.15 for a 7.30 start
FREE MEMBERSHIP

Entrance fee of £5.00 includes refreshments and lucky draw ticket.

Showing on Tuesday 27th June: **BELFAST**

Written and directed by Kenneth Branagh: a poignant story of love, laughter and loss in the Belfast of the late 1960s

Showing on 25th July: DOWNTON ABBEY – A NEW ERA

The second lavish film about the Crawleys, full of exuberance and glamour, plus tears of joy and sadness. A perfect film for a summer evening!

We reserve the right to show a substitute film should the need arise or to refuse admission. Children under 16 must be accompanied by an adult (ID will be requested).

Home Care With a Difference



Tailor made to your individual requirements

- Award winning care
- Personal care services
- Companionship services
- Highly trained CAREGivers
- Home help services

If someone in your family needs a little help
please call us on **01303 847899**

www.homeinstead.co.uk/folkestone
300 Cheriton Road, Folkestone, Kent, CT19 4DP

Each Home Instead Senior Care® franchise office is independently owned and operated. Copyright © Home Instead 2017.

Home Instead
SENIOR CARE
To us, it's personal.

Quilter Financial Advisers



Local Financial Advice

Tailored specifically for you

I live in West Hythe and can help you with advice or reviews, whether for businesses or personally on any of the following products:

- ▶ Retirement Planning
- ▶ Inheritance Tax Planning
- ▶ Investments
- ▶ Pensions and Transfer Advice
- ▶ Mortgage Protection
- ▶ Mortgages and Re-mortgages
- ▶ Income Protection
- ▶ Critical Illness cover
- ▶ Business Protection
- ▶ Life Cover

Transferring out of a Final Salary scheme is unlikely to be in the best interests of most people.

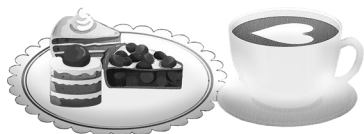
For a **FREE** initial consultation please contact:

Corinne Gibbons DipPFS CeMAP
Financial Planning Consultant
T. 01303 653425
E. corinne.gibbons@quilterfa.com
W. quilterfinancialadvisers.co.uk

OPEN GARDEN

(Five Farthings, Aldington Road, CT21 4LH)
Sunday 25th June
2pm till 4pm
Entrance £3.50. To include tea/coffee and cake

All proceeds going to :-
LYMPNE OVER 50's LUNCH CLUB
Anyone interested in joining our friendly group
please contact
Margaret on phone no. 01303 269557
Email: lymplunchclub@gmail.com
(Transport can be arranged if needed.)



ST STEPHEN'S CHURCH
COFFEE MORNING
SATURDAY 17th June 2023
10.30am - 12.30pm

*Come and join us for
coffee, cake and savoury bakes
Well behaved dogs welcome*

*Proceeds to maintenance of the church plus
a donation to this month's nominated
charity:*
Hythe Dementia Awareness Forum

David Ian REMOVAL
FURNITURE & BEDS SERVICE

LET US MOVE YOU

Providing Flexibility to make your move run smoothly for you

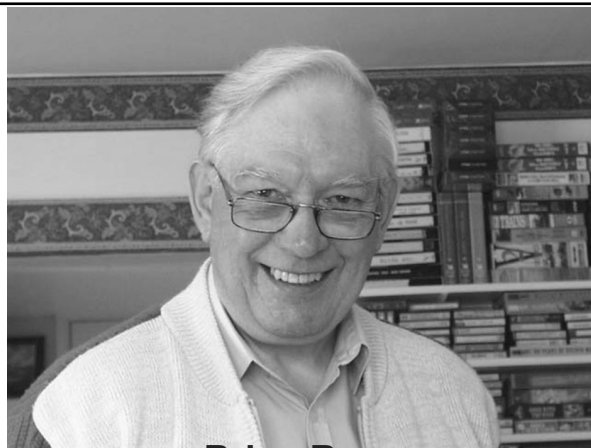
- Local, National & European Removals
- Home Office or Commercial
- House Clearance & Disposal Service Available
- Short Notice No Problem, Same Day Service Available
- Storage Facilities
- Full Packing Service Available
- No Job Too Small
- CALL THE EXPERTS



www.davidianfurniture.com

CALL NOW FOR A FREE QUOTE
01303 264052

Dymchurch Road | Hythe | Kent
Email: sales@davidianfurnitureltd.com



Brian Rose

Brian Rose has been a Churchwarden at Lympne Church for many years and it is with great sadness that we have to share the news that Brian has unfortunately passed away. Even though we all knew that Brian was ill, it has still come as a terrible shock. What a wonderful man he was and what a loss to our church family.
Please remember Brian's family in your prayers.

THE SCHOOL OF ROCK now meets regularly Sunday evenings 6.30 - 9.00 in the village hall. We are beginning to form a small band and are open to more musicians and vocalists who want to join us - sessions are free of charge. We are particularly seeking a regular drummer - whether an amateur enthusiast or an early learner you would be ideal! (We have a set of drums available for use if needed.) Also anybody who is keen to sing - just enthusiastic and willing to work with the band.
We are keen to hear from you!
Phone Phil on 07512 312 516.

CELEBRATING 150 YEARS!



JOHN WILLIAMS & COMPANY

EST. 1870

Roofing & Building Maintenance
Specialists

When Quality Matters

01303 265198

Your Local Family Business with a National Reputation

www.johnwilliamsroofing.co.uk

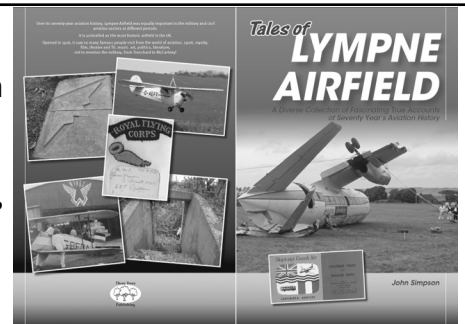
LYMPNE AIRFIELD HISTORY SOCIETY

Our presentation
in May featured

John Simpson presenting his new book, *Tales of Lymgne Airfield*, which was well received and sales were brisk on the night. Copies are available directly from John for a special Lymgne residents' price of £10. If you would like a copy please call the number or email below.

On July 4th Nick Oram will be giving us a presentation entitled *Spitfire Pilots - Legends of the Air* based on books he has written on the subject. These will be on sale on the night.

Our meeting start time is 7.30pm. Admission £2



This month we look at an incident of friendly fire here in Lymgne during the V1 campaign of 1944

Friendly Fire Over Lymgne

By John Simpson

In May 1944 the Spitfires of 74 Squadron arrived at Lymgne with their LF Mk IX variant. The V1 campaign had started on the night of 13th June, one week after D-Day. That night F/L Don E. Llewellyn remembers hitching a lift back to Lymgne on the back of a motorbike. Along the coast road back from Folkestone he remembered seeing red tracer from Bofors guns streaming out to sea. In the cloud he could not see the tell tale red glow of the flying bombs, but that is what was being shot at by the Bofors guns.

The principal fighters engaging the flying bombs were the Hawker Tempest and the Spitfire Mk XIV. At first the Merlin powered Mk IX was not being employed to engage the V1, despite the keenness of their pilots to have a go. Indeed Llewellyn had complained passionately to his seniors at the injustice. However this was to change. On the night of 29th June F/L Llewellyn, B Flight Commander of 74 Squadron was sent up with Sgt. Paddy Dalzell for the last hour of daylight at Lymgne. Llewellyn was flying NH468 4D-N and Dalzell RR207 4D-T. At about 4000' coming from the west Llewellyn saw a V1 approaching from right to left just below cloud level. He then pulled up into cloud and effected a 90 degree turn and lined up on its tail firing his machine guns at it. Just as he was doing this, a Tempest from Newchurch got in the way of the line of fire and was hit in the wings by the Spitfire. In the ensuing engagement Llewellyn finished off the V1 which came down in a field north of Lymgne, but the Tempest was also damaged. Later bits of the Tempest were shown to him. The Tempest pilot was Wing Commander Russell Faulkner Aitken AFC, OC 150 Wing, from New Zealand.

Paddy Dalzell had been on another radio frequency and was unaware of what Llewellyn had done. He was met by cars when he landed. One was the CO's who came over to him and thought it was Paddy who had shot at Aitken, and asked if he was all right. He learned one of the Tempest's wingtips had been shot off. On landing Llewellyn, who thought he had shot down the Tempest telephoned his report to a WAAF saying he'd automatically shot down the Tempest. She simply said to him, 'what another one?' and rang off. He wrote in his log book;

'June 29th Spitfire IX on anti Diver patrol, 1 hour - 1 Doodlebug destroyed, 1 Tempest damaged'.

Llewellyn left Lymgne on July 5th. Aitken went on to be awarded the OBE alongside his AFC. He was also mentioned in despatches three times and died on 25th February 1989 aged 75.

For information about the Lymgne Airfield History Society, contact:
John Simpson on 07508 708725 or email:
johnsimpson43@btinternet.com

STUDYING HISTORY AND ARCHAEOLOGY IN LYMPNE (SHAL)

Our May activity was a return visit after a number of years to see the Bronze Age Boat Gallery in Dover in its Market Square Museum. The boat was discovered in 1992 when contractors working on the A20 main road through Dover revealed timbers at about 6m below ground level, later identified as the mid-section of a prehistoric boat. A section of 9m long was retrieved and is displayed in the Museum. The boat dating back to about 1600BC was shaped from massive planks of 300 year old oaks and is the world's oldest known seagoing boat. The excellent display clearly shows its overall size and shape, the timbers used, the method of construction and the woodworkers' creative skills of the most complex object known from prehistoric Kent. The Museum also has a large display of Bronze Age axeheads, a continuously running film of the work post-excavation to make the boat seaworthy and its inaugural journey to just beyond the harbour, as well as other features of Dover and its finds through the centuries. A visit to this free entry Museum is well worth it.

The 20 June visit is also in Dover with a guided tour by John Jarvest of the Fan Bay Deep Shelter site. It involves 125 steps both to enter the shelter and 125 to ascend out of this National Trust -owned property. Those who wish to attend should contact Rosemary Stutchbury by 13 June on 07854 863560 or email rosemary@stutchbury.myzen.co.uk Those not National Trust members will need to pay the NT day visit entry fee. Please meet at the Village Hall car park at 9am in order to car share.

ST STEPHENS CHURCH


SERVICES AND EVENTS IN JUNE

4TH Parish Communion 11.00 am
11th Hooba Family Service led by Sunday Club 11.00 am
17th Coffee Morning 10.30-12.30am
18th Parish Communion 11.00 am
25th Parish Communion 11.00 am

SUNDAY CLUB Meets at **The Lads' Club, Rectory Lane, Saltwood, CT21 4QA, 10-11am during term time.** We have a wonderful time with all sorts of art & crafts and cooking, games and lots of drama. Fun groups for children aged 3-10 years.

The Monday Club for young people aged 11 - 16 years is also held from 5.30 - 7.00 pm at its usual venue. New faces to both groups are always very welcome.

For more information ring: Christine Clover on 0300 0301662, text: 07379 877846 or email: christineclover@lympneandsaltwoodchurches.uk.



LYMPNE & SALTWOOD TODDLERS

Come and join us at
Lympne & Saltwood
Toddlers
10 - 11:30am

Thursday mornings in the
Harry Margary Hall,
Aldington Road, Lympne
CT21 4LE



NEWS LETTER DIRECT TO YOUR IN BOX? - SAY NO MORE

If you would like to receive this newsletter direct to your email each month please copy the following link into your preferred browser and subscribe to our E-newsletter service.

<http://eepurl.com/hfeE9v>

Alternative scan the QR code to be taken to the subscription form. Only a first name and an email are required.

HELP THE COUNCIL SAVE SOME TREES AND SOME MONEY



The bunting is gone, and the excitement subsided. What great joy we all experienced through the many events of last month to celebrate the King's Coronation. What now? Do we go back to the humdrum of our busy lives unaffected? Do the decisions we make daily still rest on what we hear in the media or in the workplace. Do you simply go with the flow?

I can't help but reflect on the traditions of the past and question the meaning and the beliefs of those who went before. Much of what I saw in the coronation service still sits well with many today, but for too many it made no sense. Why was the King hidden behind a screen for example? I heard one person on TV ask, "Why was the King hidden, we have a right to see!" Clearly it isn't only understanding that we struggle with but an attitude and level of respect toward others or the positions they occupy. It is a sign of a lack of Christian teaching. This is nothing to do with church or belief. It is about the values we find in the Bible that have shaped our society and much of the world. Despite the media reporting that we are no longer a Christian country, the entire basis of our culture and tradition is Bible based. Even for those who do not believe it cannot be denied. I call into question the morals and motives of anyone who tries to undermine the foundation of our society.

People are generally very fickle. And so, it is vital that the Christian voice is heard loud and clear and not eclipsed by the din of the noisy minority with that questionable motivation. In the mid-sixties, in the southern states of America, over 75% of white people believed in the segregation of black people in public. Within less than two years this statistic turned completely the other way round. Challenge all thinking and motives and good will overcome evil. Most people are uninformed or ill-informed. Teaching the truth of the Gospels, the values of Christianity, is the mission of God as taught by Jesus. You don't have to believe in God to accept that fact.

Things are not perfect; they never have been. Humans have always abused the position of power and authority. We move ever forward, not always in the right direction and often motivated by the wrong ideals and values. This is why it is so important to teach biblical values and to understand the basis of our society. Then it begins to make sense and better decisions are made for the greater number of people.

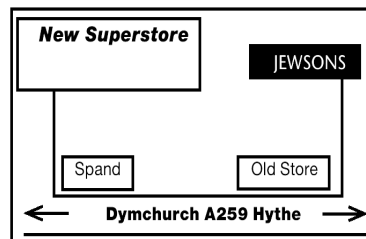
Blessings Rev Barry

David Ian
FURNITURE & BEDS
SUPERSTORE

Dymchurch Road, Hythe, Kent

01303 264052

Email: sales@davidianfurnitureltd.com



REMOVAL AND STORAGE
CALL NOW FOR A FREE QUOTE

*TERMS & CONDITIONS APPLY

OPEN 6 DAYS A WEEK

Mon - Fri 9am - 5.30pm Sat 9am - 5pm

Kent
County
Council
kent.gov.uk



TRADING
STANDARDS

APPROVED

working in partnership with
Checkatrade

10%
Discount
for
Lympne
Residents
at

David Ian
FURNITURE & BEDS
SUPERSTORE

ANNUAL PARISH MEETING

The Annual Parish Council meeting took place on the 17th May with outgoing Chair Cllr Jo Howes providing an update on the activities of the Parish Council over the past four years. She thanked the numerous volunteers who work in our village and wished the new Parish Council well as she stood down. We would like to thank the members of the public who attended and those that did hear from our new KCC Councillor Jenni Hawkins and also our District Councillor John Wing. Various subjects were raised including the future of the pub which we are assured by the owners Stonegate will be leased again as a pub. Concerns over Otterpool Garden Town brought a negative response from Cllr Wing who was not happy with how the development was going (he voted against it by the way) and that the project seems to be leaking money. Cllr Jenni Hawkins although not directly involved with the plan commented that there did not seem to be a clear plan around infrastructure and she would be monitoring this. Derek Cowell provided a full update on the litter levels in the village stating there had been no fly tips in the last 12 months. Otterpool Lane and the refuse left by lorry drivers is a continuing mission for the volunteers and the Parish Council but improvements were highlighted. Pot holes and overgrown footpaths were discussed and all agreed that the more people that report these matters the quicker they are sorted out (see below for info). Mr Michael McCauley- Castellan of Lympne Castle gave an in-depth report about the future of the Castle which is to be refurbished to its original state in 1308- a long project but one he hopes the village will take pride in. What is clear is that the new owners want the Castle to be very much part of the village rather than a building behind a closed gate as it has been for the last 25 years.



WILLS

TRUSTS

POWER OF
ATTORNEY

PROBATE

Death isn't something most of us want to talk about or think about. And why would we? But what we DO want is for our loved ones to be looked after when we're gone.

And yet, nearly half of us don't have a will or even a plan for our estate when we die. It's something many just don't get round to - despite knowing that we should.

Book your free consultation with Squiggle today.

01233 659796

www.squiggleconsult.co.uk

Squiggle Consult Ltd
11 Park Barn, Evegate Business Park, Mersham, TN25 6SX
Registered Company - 10816512

KENT COUNTY COUNCIL

REPORT A FAULT

Anyone can report a fault on a road or footpath on line at the following web address

www.kent.gov.uk/roads-and-travel/report-a-problem

You can use this to report one of the numerous pot holes around at the moment, uneven footpaths, defective lights, overgrown footpaths, flooding and lots more.

You will receive a reference number for your report and now with an improved system you can track how the County Council are dealing with your report.

So if you have hit that pot hole for the tenth time this week why not report it on line!



OIL BOILER SERVICING

INCLUDES NOZZLES & HOSES

£150 +VAT

CONTACT US :

www.baldwinsalter.co.uk
office@baldwinsalter.co.uk
01304 226611



REFUSE COLLECTION DATES

JUNE 2023

Recycling (Purple Lid/Black Box) and Food Waste will be collected on:

Tuesday 13th and 27th

Non-Recyclables (Green Lid) and Food Waste will be collected on:

Tuesday 6th and 20th

Garden Waste Collections 7th and 21st

Please do not put the lid on the Black Box— use the food waste container or a heavy object.

OVERFLOWING PUBLIC BINS

YOU can report overflowing public bins on line

www.folkestone-hythe.gov.uk/full-bins

LOCAL TRADES

STUDIO J HAIR SALON LTD

1a Belcaire Close Lympe
A small family business
with a big heart
"Wella Professional" products used
and also available to purchase.
All services
to cater your hair needs
with over 30 years' experience.
01303 267877

www.studiojhair.co.uk

Accountant in the Village
Bookkeeping, CIS and VAT Returns
Sole traders, partnership and
companies accounts preparation
Personal Tax, Business Tax and
Corporation Tax
Tel: Mariana Mackenzie:
07805 653103



07745 532075

Mobile Foot Health Practitioners.
Treating and managing foot and nail
conditions, corns, callus, fungal,
fingernails, diabetic foot care
www.eastkentfootcare.co.uk

DILTON MINI SKIP HIRE
Ballast, hardcore, sand,
topsoil supplied. Registered waste
carrier.
Phone 01303 812 448, or
Mobile 07799 433 754

ASHTON TREE CARE
Hedge cutting, stump grinding,
tree surgery
All work fully insured
Contact 07929 627 622
ashtontreecare@gmail.com

PLUMBER

City & Guilds qualified
Affordable, Reliable and Local
All work fully insured and
guaranteed. Wide range of hot
and cold water services. See
website for further details,
rates and customer feedback.
Call now on 07899 034 695
for a no-obligation, free quote
or visit our website:
www.condicoplumbing.co.uk



Tai Chi For You

TAI CHI

Suitable for all ages
and levels of fitness
Every Friday 1215
Lympe Village Hall

www.taichiforyou.co.uk
CONTACT- 07587 167 756



ACC ELECTRICAL

Fuse board changes,
cctv, alarms, PAT
testing, smoke alarms, landlord
safety checks,
security, lighting, rewires, smoke
detectors and much more!
Free Quotations and friendly
reliable service
01303 211 011/07595336880
info@accelectrical.co.uk
www.accelectrical.co.uk



**PUNCH & JUDY
PLAYGROUP**
Quality care and
learning for
2-4 year olds
At Lympe Village
Hall Term time only
Mon-Fri
8.30am-3pm,
Weds 8.30am-1pm

Tel. no: 07527 111584 e.mail:
info@punch-and-judy.org.uk
or visit www.punch-and-judy.org.uk

**THE BOWEN TECHNIQUE
BOWEN THERAPY IN LYMPNE**
Back pain, arthritic pain, asthma,
digestive disorders, migraine,
practically any problem can
potentially be addressed.
Lynne Rodgers, Cert ECBS.
Call 01303 268 910 or
lynnealexrogers@gmail.com

CURTAINS

Handmade
curtains, blinds and soft
furnishings.
Curtain alterations.
Call Valery Wren
01303 237 755



TAI CHI

Suitable for all ages
and levels of fitness
Every Friday 1215
Lympe Village Hall

www.taichiforyou.co.uk
CONTACT- 07587 167 756



High quality painting and
decorating services for internal and
external works.
References available.
Call or message Adam on:
t: 07958546519
e: info@zenondecorating.co.uk

TAXI IN THE VILLAGE.

Short, long or any distance.
Airport, docks, etc.
Ask for a quote.
Speak to Geoff
Phone 07703 444 814

DN PLASTERING SERVICES

Local, Trustworthy & Reliable
Over 25 Years Experience
Call Darren 07932 002 442
dnplasteringservices@gmail.com

LOCAL BATHROOM and KITCHEN FITTER

Reliable, professional, 20 years
experience fitting bathrooms, tiling,
plumbing and general building work.
Call Andrew on 07788 728 787 for a
free estimate.

WRAIGHT'S MOWERS

NEWINGREEN (A20)
Servicing, Repairs, Sharpening
Spares and Sales
all makes of petrol & electric mowers.
Benham Water Farm,
Ashford Road (A20)
Newingreen, CT214JD
Opposite old race course
Tel 07733293315



K.P. Decorating

- Internal Decorating
- External Decorating
- Plastering
- Access all areas

Call: 07956455720
www.kpdecorate.com

LYMPNE PARISH COUNCIL CANNOT ACCEPT RESPONSIBILITY FOR THE ACCURACY OF ANY
OF THE DETAILS ADVERTISED. YOU ARE STRONGLY RECOMMENDED TO TAKE
APPROPRIATE ADVICE BEFORE ENTERING INTO ANY COMMITMENT.

LOCAL TRADES

Also find us online at www.lympne.net

VILLAGE HALL BOOKINGS VISIT

<http://www.lympnevillagehall.co.uk/bookings/>

PAINTING, DECORATING & HANDYMAN

Interior and Exterior – All types undertaken. FREE ESTIMATES.
30 YEARS EXPERIENCE
Call Mick Cockburn
Mobile 07769 221 871

RICHARD AJ THOMPSON LTD Plumbing & heating engineer

Gas Safe Registered-No 513449,
22 years experience.
Central heating boiler servicing,
repairs and installations.
All domestic plumbing repairs,
Water softeners, gas fires, cookers
and water heaters.
Landlord's Safety Certificates.
Tel 01303 266 273
Mob 07540 333 250

John Williams & Company

Roofing and Building Maintenance
Slating, Tiling, Flat Roofing, Lead-
work Gutters, Fascias and Soffits
Brickwork, Carpentry, Plastering
Free Quotations and Advice
Call: 01303 265198
Stone Street, Lympne, CT21 4LD
www.johnwilliamsroofing.co.uk



CN ELECTRICAL DOMESTIC & RESIDENTIAL

New Sockets, Fault Finding,
Rewires, Lighting,
Consumer units and much more!
NICEIC REGISTERED ELECTRICIAN
Contact Chris
Mob : 07826 505671
www.cnelectrical.co.uk
info@cnelectrical.co.uk

YOUR COMPUTER PROBLEMS SOLVED

Call out service. PC/Laptop
repairs, slow running, broken
screens, memory upgrades, virus
removal, data recovery. Enquiries
welcome.
Call Rob Gardener 07807 180 906
or 01304 219 471
Email robert.gardner@talk21.com

EX-JOB AND DOGS

Retired local police officer offering
Dog Walking, Dog Day Care
Boarding in Home Environment
Home Watch Service Long/short term
Including Cat Care
Contact Kerry
with your requirements
CONTACT 07791 095 895
exjob17@gmail.com

HANDYMAN AND BUILDING MAINTENANCE

Roofing, Guttering,
Plumbing, Drains,
Painting, Decorating,
Plastering
Free Estimates
References available

Contact 07836 665382

SPOTLIGHT PEST CONTROL SERVICES LTD

British Pest Control
Association member.
General pest control including
rats, mice, moles, wasps, ants,
fleas, bird spikes and general
proofing Fast, friendly and
reliable.
Contact Dave on 07715211899.
info@spotlightpestcontrolkent.co.uk
www.spotlightpestcontrolkent.co.uk



I'm Michelle, local
branch owner for
Sales and Lettings
for The Good
Estate Agent.

We are a 13 year
old family run,
Nationwide business, with our
Head Office in Lympne.

I take pride in my high quality
customer service and my doors
don't close at 5pm!

For a Free Sales or Lettings
valuation please call 07848015443
or email
michelleferbrache@thegood.co.uk

ADVERTISE HERE

PIANO LESSONS

Enjoy learning the piano with an
experienced teacher in a pleasant
home near Lympne Primary
School. Children and adults of all
abilities welcome. It's never too
late to start - just bring your fingers
and a love of music!
Contact Kate Chesterman,
Bachelor of Music (Hons)
Tel 07807 156 884 or Email:
lympnekate@gmail.com

LYMPNE VILLAGE STORES AND POST OFFICE

OPEN from 830-530 weekdays
Saturday 830-2pm
Sundays CLOSED
Visit us for your everyday needs
Milk, bread, eggs and your daily
newspaper or magazine and the
National Lottery.

REMOTE WORK OFFERED VIRTUAL ASSISTANT & GENERAL ADMIN SUPPORT

*I can offer a range of support on an
ad-hoc hourly, weekly or
monthly basis.*

- Checking & responding to emails
&
customer queries, record-keeping,
diary management, typing, etc;
- Facebook Group admin;
- Zoom calls;
- Proofreading, Copy Editing;
- Excel Databases.

For specific requirements,
please ask.

I have a broad range of experience.
*I am detail-orientated, reliable,
resourceful,
self-motivated, and an adept
communicator.*

Steffie Betts - gmsteffie@gmail.com

Kingdom

CARPET CO.

- Carpets Supplied & Fitted
- Carpets Professionally Cleaned
- Carpets Whip Edged & Cotton Bound

Whatever your carpet need, give us a call for a
FREE estimate / assessment.

Over 50 years combined experience.

07943 764 442

Email: kingdom.carpet.co@gmail.com