

LYMPNE

NEWSLETTER
JANUARY 2020



DELIVERED TO
HOMES IN
LYMPNE,
NEWINGREEN,
COURT-AT
STREET AND
WEST HYTHE
ROAD

IN THIS MONTHS ISSUE; How to report fly tips and defacts to KCC, telephone scams and how to avoid them, memories of Lympe, Lympe Village Hall volunteer appeal and much more... For information on this newsletter or to contribute contact the editor at lympnepc@outlook.com

HAPPY NEW YEAR TO ALL OUR READERS

Studying History and Archaeology in Lympe (SHAL)

Wishing you all a very Happy New Year

"MEMORIES OF LYMPNE"

TUESDAY 14 JANUARY

7.30 pm HARRY MARGARY HALL

Following last year's successful event, and by popular request, our January meeting will give everyone another opportunity to share their memories and memorabilia of our village over past decades. Once again, a selection of Carole Edwards' fascinating history boards from the Millennium exhibition will be on display, together with the Lympe DVD. So, bring along any photographs, scrapbooks, newspaper cuttings, old film - and all those deeply embedded thoughts and feelings about life in the village. Last year people talked about flights and events when the airfield was still in operation, the "wartime spirit", fetes and events held in the village and some lucky escapes. A whole variety of memorabilia was on display for everyone to see. History isn't just about the ancient past, it is what is happening now and within living memory - we need to capture and record it! If your brain starts buzzing with thoughts and ideas, write it down and either bring it along or send it to Fiona Jarvest or a member of the committee. **Whether you have lived in the area for years, or just moved in, come along and join in.** We're looking forward to seeing you there. New members and visitors to SHAL meetings and events are always welcome. Just turn up at a meeting (donation of £3 requested for non-members) or for further information about SHAL please contact Fiona Jarvest on 01303 237143 or email fionajarvest1@gmail.com.

RUBBISH REPORT-REPORT RUBBISH

DEFECT REPORT-REPORT DEFECTS

As we move into a new year we look forward to new adventures and new challenges. Lympe Parish Council want to support all those who strive to make Lympe a beautiful place to live by collecting litter, making repairs and doing those unseen deeds that many of us take for granted. So, how can you help. For Lympe to receive the services it needs to remain clean and tidy and defect free we need people to report litter and fly tips. We need people to report defects in roads, footpaths street lights and signs. While we are happy to receive reports at the Council by far the quickest and most convenient way to report defects is to do this on line at the Kent County Council website. Just enter into you preferred browser **KENT COUNTY COUNCIL FAULT REPORTING** and you will be taken firstly to a page to explain how you report a fault and then to a page where you can report the fault and get a reference number. You can then track how the fault is being dealt with. Hopefully the fault will be repaired but if not the Parish Council can follow this up on your behalf using the reference number you will have been provided.

APPEAL- Our litter volunteers are reporting large amounts of waste being dumped at the lower end of Otterpool Lane and along the A20 in the area of the Airport Café. Assumptions are being made as to who is responsible but we would appeal to residents to report any incidents they witness to the Local Council.

NEW Tai Chi For Health Beginners Class



FREE Taster Friday 10th Jan 9:30am

Lympe Village Hall, Thereafter £6 per class

Gentle exercise, improve balance, co-ordination, stability

Suitable for ALL ages & levels of fitness with no floor work

www.taichiforyou.co.uk

Cheriton Motor House

www.c-m-h.co.uk

SERVICING, MOT'S, BRAKES, CLUTCHES, TIMING BELTS

AIR CONDITIONING, TYRES, WHEEL ALIGNMENT
& VEHICLE ELECTRICS

FOR ALL MAKES OF VEHICLE

VOLKSWAGEN GROUP SPECIALIST

SEAT SKODA AUDI VOLKSWAGEN

COLLECTION AND DELIVERY SERVICE AVAILABLE

CAESARS WAY, FOLKESTONE, KENT, CT19 4AL 01303 275 795

A FAMILY RUN BUSINESS TRADING FOR OVER 40 YEARS



Kent County Council Mobile Library operates in our area. The library visits Beacon Way every other Friday 1245- 1 .15pm. The next date is the 13th January.

It also visits Court at Street every other Wednesday 310 pm to 3.40pm. The next date is the 11th January.

Please consult the KCC libraries webpage for updates:

www.kent.gov.uk/libraries choose 'Find a library' go to bottom of page for the mobile library **search facility**

**No request charges for items ordered from Kent libraries!*

**You can borrow books/audio books for 4 weeks before return/renewal!*

ALERT

SCAM ALERT—

We know that half of all scams start with a phone call and vulnerable residents in Kent receive over 55 nuisance calls per month and over half of them are from criminals. Our intelligence shows that people in Kent are being targeted by so-called computer companies who tell you that there is a fault or a virus on your computer. They offer to fix the problem over the phone for a small fee. Of course, there isn't a fault or virus and you have given away your bank details to a stranger. One consumer agreed to pay £19 for the 'trader' to fix the problem, but they took £319. Computer firms do not make unsolicited phone calls to help you fix your computer.

Common types of telephone scams include; Computer virus alert or computer fault, telephone services, Microsoft support, PPI, prize draws, banking services, advertising, energy, local government, compensation calls, hm revenue and customs and automated voice mail.

VEHICLE CRIME CONTINUES

Reports have been seen on the village face book page that vehicles continue to be damages in Lypne. If you notice anything suspicious or have any information as to who is responsible please contact Kent Police on 101

Home Instead
SENIOR CARE
To us, it's personal.



A GREAT PLACE TO WORK



WINNER
BEST EMPLOYERS
IN CARE
AWARDS 2016/17
BEST LARGE EMPLOYER

JOIN OUR TEAM

- Excellent training
- Previous experience not necessary
- Great rates of pay

Do you have a warm heart and caring nature? Then you sound **perfect** for us. We are always recruiting for CAREGivers to work with our lovely clients.

www.homeinstead.co.uk/folkestone
300 Cheriton Road, Folkestone, Kent CT19 4DP

Home Instead
SENIOR CARE

Each Home Instead Senior Care franchise office is independently owned and operated.
Copyright © HomeInstead 2017

To us, it's personal.



LOCAL FINANCIAL ADVICE

Tailored specifically for you

I live in West Hythe and can help you with advice or reviews, whether for Businesses or personally on any of the following products.

- Retirement Planning
- Inheritance Tax Planning
- Investments
- Pensions & Transfer advice
- Mortgage Protection
- Mortgages & Re-mortgages
- Income protection
- Critical Illness
- Business Protection
- Life cover

Transferring out of a Final Salary scheme is unlikely to be in the best interests of most people.

For a FREE initial consultation please contact:

Corinne Gibbons DipPFS CeMAP

Financial Planning Advisor

T 07930 273033



CHARLES DERBY

corinne.gibbons@charlesderby.com
www.charlesderby-corinnegibbons.com

FROM KCC WARDEN JON LODGE

SO HOW DO YOU AVOID TELEPHONE SCAMS-

Don't give out your telephone number, tick that you do not want to be contacted with promotional material when signing contracts, register with the telephone preference service(which is free) on 0345 0700707. Marketing calls are legal but not if you tell the business you do not want to receive them or you are registered with the telephone preference service. Go ex-directory, check the call blocking facilities from your provider or consider buying a call blocking device such as truecall which can block 98% of nuisance calls. If you receive silent calls contact OFCOM on 03001233333. If you or someone you know has been involved in a scam or you would like assistance setting up any of the services above please call Jon Lodge on 07969 583915

LYMPNE YOUTH CLUB

Lympne Youth Club will start again on
Tuesday 14th January 2020
Lympne Village Hall
630pm-745pm

David Ian REMOVAL SERVICE
FURNITURE & BEDS

LET US MOVE YOU

Providing Flexibility to make your move run smoothly for you

- Local, National & European Removals
- Home Office or Commercial
- House Clearance & Disposal Service Available
- Short Notice No Problem, Same Day Service Available
- Storage Facilities
- Full Packing Service Available
- No Job Too Small
- CALL THE EXPERTS



www.davidianfurniture.com

CALL NOW FOR A FREE QUOTE

01303 264052

Dymchurch Road | Hythe | Kent

Email: sales@davidianfurnitureltd.com



LYMPNE VILLAGE HALL FILM CLUB
lympnefilms@gmail.com

FILMS SHOWN 3RD TUESDAY OF THE MONTH (EXCEPT DEC)
FREE MEMBERSHIP
£5.00 entrance fee covers refreshments and draw ticket
7.15 for a 7.30 start
Tuesday 21st: January:- Something's Gotta Give (12)
Comedy
Starring Diane Keaton, Jack Nicholson & Keanu Reeves
Ageing playboy Harry encounters the risk of dating a much younger woman.
Tuesday 18th: February:- Dad's Army (PG) Comedy
Starring Bill Nighy, Catherine Zeta-Jones, Toby Jones, Tom Courtenay
Walmington-on-Sea's finest in action.
We reserve the right to show a substitute film should the need arise or to refuse admission. Children under 16 must be accompanied by an adult (ID will be requested)

Would you like to help out in your community?

Can you spare your time and accounting expertise?

Lympne Village Hall Committee have a vacancy for the Treasurer's position. This involves a few hours a month maintaining a simple spreadsheet, paying bills and presenting an end of month report at each Committee meeting. Additional annual responsibilities include the Charity Commission & Gift Aid returns plus end of year account production for independent examination. No qualifications needed, would suit someone with finance/banking/book keeping experience.

For more info/any questions please contact:

jonstanford@dsl.pipex.com or call 07779983654

CELEBRATING 150 YEARS!



JOHN WILLIAMS & COMPANY

EST. 1870

Roofing & Building Maintenance
Specialists

When Quality Matters

01303 265198

Your Local Family Business with a National Reputation

www.johnwilliamsroofing.co.uk

STUDYING HISTORY AND ARCHAEOLOGY IN LYMPNE (SHAL) 2020 PROGRAMME

14 January	"Memories of Lympne" - another chance to bring and share memorabilia from times past.	
11 February	"150 years of John Williams & Co"	John Howland
10 March	"Part 1 - Revelations of Archaeological Surveys in Lympne - what do we have"	Richard Taylor
	"Part 2 - Stringmans Field, Badlesmere - the perils of assuming too much in archaeology"	
14 April	AGM followed by "Contrasts of Ancient and Modern - Lympne Hall & Shepmead"	Rosemary Stutchbury Guy Topham
12 May	"Invention and Imagination: revealing the true story of the Anglo-Saxon church re-excavated in Lympne in the summer of 2019"	Rob Baldwin
09 June	Visit to Medieval Sandwich	
14 July	"Man Melts Metal"	Guy Topham
11 August	"Beside the Seaside" - A walking tour of Folkestone seafront and harbour, guided by	Tony Quarrington
08 September	"Medieval Churches"	Prof. P D Clark
13 October	"Coal from Kent"	Rosemary Stutchbury
10 November	"History of Cheriton"	Vince Williams
08 December	Christmas Party	

Meetings are normally held in the Harry Margary Hall, Lympne, commencing at 7.30 pm (doors open from 7.00 pm).

Times and meeting places for external visits will be advised nearer the date.

Visitors are always very welcome to our meetings - a donation of £3 is requested for non-members.

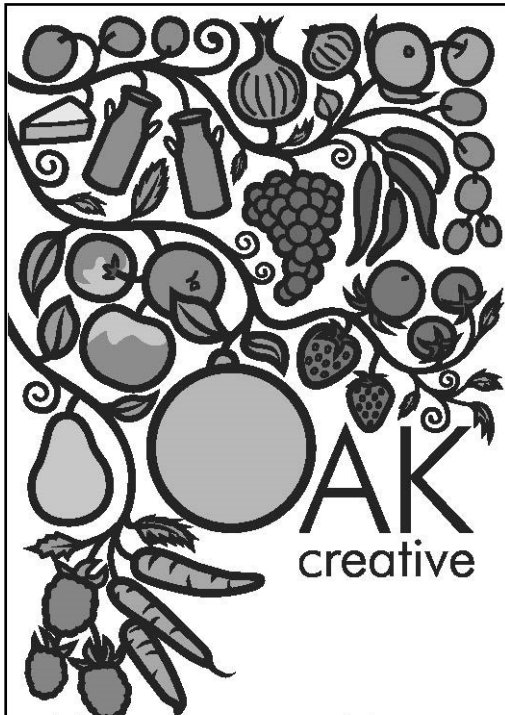
For further information about this and other SHAL events, please contact Fiona Jarvest on 01303 237143 or email fionajarvest1@gmail.com.

SHAL's Christmas meal went off with a BANG at The Bistro in December. Many said the evening was the best we'd had, and our thanks go to all the staff who prepared and served an excellent meal, to Maureen Jones for making our novel paper hats in place of the traditional Christmas cracker, and to Judith East for organising the event. We're already looking forward to next year.

NEW PARISH COUNCIL WEBSITE

The Council has a new website which can be viewed at www.lympnwe.net

We would be interested in receiving your feedback and to hear your ideas as to what you would like included on the site.



Where creativity blossoms

www.oakcreative.net

Lympne Airfield History Society

Our January 7th, presentation subject will be the Eagle Sport Parachute School's story at Lympne Airfield presented by guest presenter Ian Daniels who was there in the 1970's. It is a story of achievement, fun, daring and tragedy. One such highlight was a performance by Paul McCartney & Wings as they took over their hangar to make a video for the final Wings album of 1979. Parachuting at Lympne finally stopped in 1981 and was one of the last flying eras of our old airfield.

On March 3rd John Simpson will tell the story of Australian aviator Sir Charles Kingsford Smith, the first pilot to cross the Pacific nonstop. His life would end in mystery as he went missing on a flight from Lympne to Australia in 1935. Many years later in modern times it was solved as parts of his aeroplane were discovered and an eye witness was found.

Please feel free to enjoy our continuing celebration of our Airfield in the wonderful surroundings of Lympne Castle's East Bar and main hall. All meetings start at 7.30pm sharp. There is no charge. Thanks to our generous hosts Richard and Aimee at the castle, and Brian our regular barman..

For more information please contact: John Simpson 01303 265078

Email: johnsimpson43@btinternet.com

10% OFF
YOUR FIRST CONSULTATION
WITH THIS ADVERT

Montgomery
Veterinary
Clinic

**AT THE EVEGATE CENTRE
SMEETH, ASHFORD**

'We treat your pet as if it was our own'

Specialising in all pet animals including exotics
& avian. Calm and friendly family run clinic.

Open 7 days a week
Full emergency service

Ample Parking
CALL 01303 813756
www.montgomeryvets.co.uk



Winnie Reports-

There have been reports to the Council about a rise in dog waste being found in the streets. Please remember like all good dog owners do, to clear up after your best friend.

In support of our litter volunteers a dog waste bag dispenser has been placed at the Airfield for those that have forgotten to bring a bag

KENT GARDENER JANUARY is a difficult month for outdoor gardening. There is only so much tidying, cleaning and maintenance that can be done, and if the ground is so hopelessly wet, frozen solid or snow covered, then most jobs become impossible. If that is so make time for the greenhouse, by cleaning the glass, pots and trays and tidying benches making ready for the first indoor sowings. There are a few jobs that can be done outside, such as, mulching rhubarb with manure then cover with large pots or a wooden boxes to force for early pullings. Don't force the same crowns next year as they need to regain their strength. If you didn't sow your broad beans in the autumn, start them now in pots in a cold frame or greenhouse, and summer cauliflower can be sown now, treated the same as broad beans and planted out in April for a mid summer cutting. Chillies can be sown in a warm greenhouse or windowsill, they need warmth to germinate which can take a few weeks, so don't give up on them to quickly. Chillies need a long growing season so they can become strong enough to develop their flowers. Sow them at the end of January with a second sowing in late February or early March. Weather permitting cut back autumn-fruiting raspberries to the ground and cut away inward-growing growth from redcurrants and gooseberries to create an open shape and reduce the remaining growth by a third. If you have a compost heap and it is ready to use, try spreading it over the empty veggie plot so it can be worked into the soil by worms and weather, ready for sowing and planting in a few months time. Don't forget the birds, hang some fat balls among the roses and other shrubs to feed the tits which will encourage them to forage for pests. There is always something to do if you want to find it, despite the weather, but perhaps we deserve a break this month, so slow down and relax

Lympne Fellowship-

As usual in December our Bring & Share Christmas Party was thoroughly enjoyed by all, with mulled wine, games, Secret Santa and, of course, all that lovely food. A great time was had by all and our thanks go to Denise Topham for hosting this year's event. We meet on the 2nd Thursday of the month, with a programme of interesting and informative talks and activities. 9 January will see us sharing our 'Handy Hints and Top Tips'. For further information about our group, please contact Beth Lewsey on 01303 264577.

SERVICES AT ST STEPHEN'S CHURCH, LYMPNE

5th January— Parish Communion
12th January-Family Service
19th January- Morning Worship
26th January -Parish Communion

All Services at 11am unless stated
PLEASE FEEL WELCOME TO ATTEND

Tea and coffee are served after all morning services
For all enquires please contact
Benefice Administrator on 03000 301 662 or
beneficeadministrator@saltwoodchurch.org

St Stephen's has a junior church called Steve's Sunday Club held on Sunday mornings at the Village Hall during school term times from 10.45- 1145 (except the **Second** Sunday, when we **lead** the Family Worship at the church). We have fun groups for children aged 3-10 years old, and always welcome new faces. For more information please ring Christine Clover on 03000 301 662

Ashford and District HEART Support Group, is affiliated to the British Heart Foundation, and arranges an interesting and most enjoyable variety of evening meetings and daytime walks throughout the year. Newcomers are most welcome to come along and enjoy the meeting. There is no membership fee, just a small admission charge per meeting towards costs.

Evening meetings, with a topical speaker and light refreshments, are held on the 1st THURSDAY of the month (excluding Jan and Aug)

at the Meeting Room, Stour Centre, Ashford, TN23 1ET usually starting at 7.30 pm ..

Monthly walks. The group arranges a country walk for members and friends

at 10am on the 3rd THURSDAY of the month.

We start and finish the walk at a country pub serving lunch [lunch is optional]

Further details, find us on Facebook or call

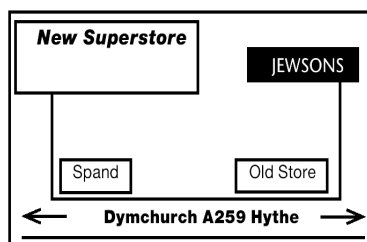
Tony Westgate 01303 260282 tony.westgate45@gmail.com
or Liz Williams 01233 732560 eawilltn26@aol.com

David Ian
FURNITURE & BEDS
SUPERSTORE

Dymchurch Road, Hythe, Kent

01303 264052

Email: sales@davidianfurnitureltd.com



REMOVAL AND STORAGE
CALL NOW FOR A FREE QUOTE
*TERMS & CONDITIONS APPLY

OPEN 6 DAYS A WEEK
Mon - Fri 9am - 5.30pm Sat 9am - 5pm



TRADING
STANDARDS

APPROVED

working in partnership with
Checkatrade

10%
Discount
for
Lympne
Residents
at

David Ian
FURNITURE & BEDS
SUPERSTORE

LYPNE PARISH COUNCIL CONTACT DETAILS

If you have any queries regarding local issues, or any other matters you may wish to raise, you can contact Lypne Parish Councillors as follows: **You can contact us in writing using the Clerks address below:**

Sally Edwards – Chair, Jo Howes – Vice Chair, Rob Auger John Burrows, Ian White ,Kerry Boyland-Wood and Claire Yates, All Correspondence should be sent to the Clerk Clerk: **Jeff Lawrence 29 Honeywood Close Lypne** Tel: 01303 230 525 e-mail:

lympnepc@outlook.com The next meeting of Lypne Parish Council will be on **Wednesday 6th January** at 7:00pm in the Village Hall Committee Room. An agenda will be put on the public notice boards before the meeting. All welcome

Kent County Councillor

Your Kent County Councillor is Martin Whybrow

He can be contacted via e mail on

martin.whybrow@kent.gov.uk

YOUR DISTRICT COUNCILLORS

Doug Wade and John Wing

If you have any local issues you would like help with, please contact them as follows:

Cllr Doug Wade- Email teaway108@aol.com

Cllr John Wing- Email johnwing66@gmail.com

KCC Community Warden

Jon Lodge can be contacted on
07969 583915

Jon.lodge@kent.gov.uk

For help and advice on home Security and safety. How to access Council services supporting you in the local community

LYPNE SHORT MAT BOWLS CLUB

Lypne Short Mat Bowls Club meets every **MONDAY** and **THURSDAY** from 7.00pm to 9.30pm **SEPTEMBER to MAY.**

IT IS A SMALL, FRIENDLY CLUB and WE CURRENTLY HAVE VACANCIES FOR NEW MEMBERS.

Do come along and try your hand at an enjoyable, skilful game.

We also have a registered coach in attendance Mondays if required.

The first three weeks are free. There is no need to buy any bowls as the club has a selection which can be used until you have decided whether you are going to enjoy the game. All you need is a pair of carpet slippers or SMOOTH SOLED FLAT shoes.

The annual subscription is £25.00 and the green fees are £2.00 per evening.

Do come along you will be made most welcome.

For further details ring our Secretary on 01303 230983 or e mail :-

trevor_groom@sky.com

OPERATION SUNSHINE

The new collector for the above worthy cause is Joan Clemens. If you have any donations big or small please contact her on 260 116

Lypne Art Club

Special attention is paid to complete beginners in our friendly Art Club, held in the Village Hall alternate Thursdays throughout the year; no materials needed until you find your feet drawing and painting a variety of subjects. Our resident artist is Helen, who gives friendly advice to all levels of ability and demonstrates different media techniques every time—guaranteed you will not be bored. **Ring Sonia for the dates: 01303 262183**

LYPNE TODDLER CLUB

Lypne Toddler Club meets at Lypne (Harry Margary) Village Hall on Tuesdays in term time from 10.00 until 11.30. This friendly group is for children under 3, including small babies, and their parents, grandparents and carers. We have toys, tea and coffee, art and singing. A donation of £1.50 per family. For more information phone Maureen on 01303 269151 or Joan on 01303 260116.

REFUSE COLLECTION DATES

JANUARY

Recycling (Purple Lid/Black Box) and Food Waste will be collected on: Tuesday 10th and 24th January.

Non-Recyclables (Green Lid) and Food Waste will be collected on:

Tuesday 3rd, 17th and 31st January. Garden Waste will be collected on 11th January.

Please do not put the lid on the Black Box—use the food waste container or a heavy object.



K.P Decorating

K.P Decorating Services

- Exterior decorating
- Interior decorating
- Floor and wall tiling
- Laminate Flooring
- General house maintenance

For a free quote and to discuss exactly what you need give us a call on: 07956455720 or visit our website www.kpdecoratingservices.com



CONTACTING THE POLICE

Emergency calls — In an emergency please telephone 999. If you are deaf, deafened, hard of hearing or have a speech impairment, a text phone is available on 18000. Use these numbers if:

- A crime is happening right now.
- Someone is in immediate danger, or there is a risk of serious damage to property.
- A suspect for a serious crime is nearby.
- There is a traffic collision involving injury or danger to other road users.

Non-emergency calls

For all other calls to the police please telephone 101. If you are deaf, deafened, hard of hearing or have a speech impairment, a text phone is available on 18001 101. You should use these non-emergency numbers to:

- Report a crime not currently in progress - for example a stolen car, burglary, or damaged property.
- Report a minor traffic collision.
- Give information to the police about crime in your area.
- Speak to the police about a general enquiry.
- Contact a specific police officer or member of staff.

The total cost of a 101 Non-emergency call is 15p.

ALDINGTON OSTEOPATHY

The Surgery, Goldwell Close, Aldington, Ashford TN25 7DY

We provide effective treatment for many conditions including: Back and Neck Pain, Shoulder Pain, Sports Injuries, Whiplash, Headaches, Ligament Sprain, Trapped Nerves, Arthritis, Knee Problems, Sciatica, Neuralgia, Tension. Also available: specialist osteopathic clinics for pregnancy related conditions and cranial therapy for babies. Early morning, evening and weekend appointments are available. Call to book an appointment: 01233 720 160.

CLEAN SWEEP

Chimney sweeping service. Fully insured and registered Member of Institute of Chimney Sweeps. CCTV inspections, nests cleared, cowl fitted, chimneys rebuilt and all general chimney maintenance.

Call 01303 267 859 or 07831 232 828

EXPERIENCED MATHS TEACHER KS2-GCSE

Available for private tuition. For details contact Rosie on 01303 268 333



07745 532075

Mobile Foot Health Practitioners. Treating and managing foot and nail conditions, corns, callus, fungal, fingernails, diabetic foot care

www.eastkentfootcare.co.uk

CURTAINS

Handmade curtains, blinds and soft furnishings.

Curtain alterations.

Call Valery Wren—01303 237 755

WRAIGHT'S MOWERS

NEWINGREEN (A20)

Servicing, Repairs, Sharpening Spares and Sales

all makes of petrol & electric mowers.

Benham Water Farm, Ashford Road (A20) Newingreen, CT214JD Opposite old race course Tel 07733293315

WILCO PLUMBING & HEATING

Central Heating Installations & Repairs. Gas and oil boiler repairs and replacements, LPG, Solar and unvented hot water specialist. Landlords Gas Safety Inspectors, local experienced engineers.

Emergency plumbing 24/7 call out.

Registered with the Institute of Plumbing, Gas Safe Registered, OFTEC Registered, KCC Trading Standards Approved.

01303 862 173/07860 452640

www.wilcoplumbing.co.uk

HOMEWISER HANDYMAN

Phil Carter, a local man for local needs. A prompt, professional service for all your home and garden maintenance needs.

Tel: 07512 312 516 or 01303 266839

PUNCH & JUDY PLAYGROUP

At Lympe Village Hall. Quality care and learning for 2-4 year olds. Open Monday to Friday during term time. 830-3pm Weds 830-1245

Call 07527 111 584 or visit. OFSTED RATED GOOD IN ALL AREAS

PROFESSIONAL MOBILE HAIRDRESSER

Cuts, Colours, Perms and Drying. Salon products used. 30 years experience. Fully insured. Call Cheryl on 07949 120 915 or email hythehairdresser@gmail.com for a price and appointment.

STAR TUTORING

Boosting confidence and self-esteem fulfilling potential

Maths English Phonics Reading KS1 and KS2 Kent Test

Experienced Primary School Teachers Please call 07531 737428

ACC ELECTRICAL

Fuse board changes, cctv, alarms, Pat testing, landlord safety checks,

security lighting smoke alarms, rewires and much more

Free Quotations and friendly reliable service

01303 211 011/07595336880

info@accelectrical.co.uk

www.accelectrical.co.uk

EXPERIENCED LOCAL PRIMARY SCHOOL TEACHER

Places available for help with maths, literacy, reading

Kent Test Preparation and confidence building

Contact Linda Franklin

01303 260452

BENSKO PEST CONTROL

Proud members of the National Pest Technicians Association.

Family run business, All pests covered.

Honest, friendly, reliable service at reasonable prices.

01303 487 401 or 07857 344 770

TAXI IN THE VILLAGE.

Geoff is back! Short, long or any distance.

Airport, docks, etc. Ask for a quote. Phone 07703 444 814

LOCAL BATHROOM and KITCHEN FITTER

Reliable, professional, 20 years experience fitting bathrooms, tiling, plumbing and general building work. Call Andrew on 07788 728 787 for a free estimate.

Accountant in the Village Bookkeeping, CIS and VAT Returns Sole traders, partnership and companies accounts preparation Personal Tax, Business Tax and Corporation Tax

Tel: Mariana Mackenzie: 07723 070 879

GEMS LYMPNETED

Ladies & Gents Hairdressers 1a Belcaire Close Lympe

Under new ownership 50% OFF your first appointment Tel 01303 267 877

THE BOWEN TECHNIQUE

BOWEN THERAPY IN LYMPNE

Back pain, arthritic pain, asthma, digestive disorders, migraine, practically any problem can potentially be addressed.

Lynne Rodgers, Cert ECBS.

Call 01303 268 910 or

lynnealexrogers@gmail.com

LOCAL TRADES

Also find us online at www.lympne.net

LYMPNE VILLAGE HALL can be hired for meetings, parties, concerts and other functions. Lympne residents pay a reduced hire charge. To make a booking please call 07497 370290 or email: david86.jones@hotmail.com

BENSKO CHIMNEY SWEEPS

Proud members of the National Association of Chimney Sweeps. Family run business. All types of fires swept. Bird's nests removed, cowls fitted. Friendly, reliable service at reasonable prices. Please call: 01303 487 401
Mobile: 07857 344 770

DN PLASTERING SERVICES

Local, Trustworthy & Reliable
Over 25 Years Experience
Call Darren 07932 002 442
dnplasteringservices@gmail.com

DILTON MINI SKIP HIRE

Ballast, hardcore, sand, topsoil supplied. Registered waste carrier.
Phone 01303 812 448, or
Mobile 07799 433 754

YOUNG'S ACCOUNTANCY SERVICES

Accountancy, Bookkeeping, Payroll & VAT Services.
Mob: 07561 112 178.
Tel: 01303 259 734
contactyoungstoday@gmail.com

OLD ENGLISH PINE

One of the best loved furniture and lifestyle shops for miles around.
Please pay us a visit
100/102 Sandgate Highstreet
Sandgate CT20 3BY
01303 248560 (open 7 days a week)

Piano Lessons in Etchingill

Kathy Robinson DipLCM



♪ For children and adults ♪
♪ Private or group lessons ♪
♪ Exams or just for fun ♪
♪ Music theory ♪
♪ Reasonable rates ♪
Tel: 07930919340
Email: kathyhct@gmail.com

Housework and Ironing

Reliable lady for housework and/or ironing
References supplied if required
Please call
Audrey or Nom
01303 269299
After 7pm

EDNA'S LADIES HAIRDRESSER and GENTLEMEN

Stone Street, Lympne
Call: 01303 268 098

RICHARD AJ THOMPSON LTD Plumbing & heating engineer

Gas Safe Registered-No 513449,
22 years experience.
Central heating boiler servicing,
repairs and installations.
All domestic plumbing repairs,
Water softeners, gas fires, cookers
and water heaters.
Landlord's Safety Certificates.
Tel 01303 266 273
Mob 07540 333 250

EX-JOB AND DOGS

Retired local police officer offering
Dog Walking, Dog Day Care
Boarding in Home Environment
Home Watch Service Long/short term
Including Cat Care
Contact Kerry
with your requirements
CONTACT 07791 095 895
exjob17@gmail.com

SPOTLIGHT PEST CONTROL SERVICES LTD

British Pest Control
Association member.
General pest control including
rats, mice, moles, wasps, ants,
fleas, bird spikes and general
proofing Fast, friendly and
reliable.
Contact Dave on 07715211899.
info@spotlightpestcontrolkent.co.uk
www.spotlightpestcontrolkent.co.uk

PAINTING, DECORATING & HANDYMAN

Interior and Exterior – All types
undertaken. FREE ESTIMATES.
30 YEARS EXPERIENCE
Call Mick Cockburn
Mobile 07769 221 871

YOUR COMPUTER PROBLEMS SOLVED

Call out service. PC/Laptop
repairs, slow running, broken
screens, memory upgrades, virus
removal, data recovery. Enquiries
welcome.
Call Rob Gardener 07807 180 906

John Williams & Company

Roofing and Building Maintenance
Slating, Tiling, Flat Roofing, Lead-
work Gutters, Fascias and Soffits
Brickwork, Carpentry, Plastering
Free Quotations and Advice
Call: 01303 265198
Stone Street, Lympne, CT21 4LD
www.johnwilliamsroofing.co.uk

STROOPZZ STROOPZZ
WEDDINGS MOBILE FISH & CHIP UNIT KIDS PARTIES
CHRISTENINGS CHARITY EVENTS SCHOOL FETES FISH SUPPERS PARTIES BOOT FAIRS
CALL: 07955 926 835 FOR BOOKINGS & DETAILS

BED & BREAKFAST

Corner House Bed & Breakfast
Aldington Road
Lympne, Kent CT21 4LF
Two double, one twin, all en-suite
Telephone: 01303 268 108

PLUMBER

City & Guilds qualified
Affordable, Reliable and Local
All work fully insured and guaran-
teed. Wide range of hot and cold
water services. See website for
further details, rates and customer
feedback.
Call now on 07899 034 695
for a no-obligation, free quote
or visit our website:
www.condicoplumbing.co.uk

KENT TEST TUITION

Qualified, experienced teacher
available for private tuition in
English, maths, etc.
Tel. 01303 265 253

CN ELECTRICAL DOMESTIC & RESIDENTIAL

New Sockets, Fault
Finding,
Rewires, Lighting,
Consumer units and much more!
NICEIC REGISTERED ELECTRICIAN
Contact Chris
Mob : 07826 505671
www.cnelectrical.co.uk

EXERCISE/MOVEMENT TO MUSIC

Lympne Village Hall,
Mondays and Wednesdays
10.15am.
Fun friendly class.
£5 for a full hour.
No need to book.
To speak to the instructor Tel:
Julie 01303-266157

ASHTON TREE CARE

Hedge cutting , stump grinding , tree
surgery
All work fully insured
Contact 07929 627 622
ashtontrecare@gmail.com