

LYMPNE NEWSLETTER JULY 2023



DELIVERED TO
HOMES IN LYMPNE,
NEWINGREEN
COURT-AT-STREET
AND
WEST HYTHE ROAD

IN THIS MONTHS ISSUE
BUS ROUTE AXE
PROPOSAL, SUMMER FAYRE,
CONCERN OVER GP
SERVICES AND MUCH MORE

RESIDENTS TOLD TO FIND ANOTHER DOCTOR!

It was brought to the attention of the Parish Council ("PC") that some residents of Lymgne registered at the Sellindge GPs surgery had received letters explaining that because they were outside of the surgery's catchment area, they needed to register with another GP. A complaint was raised by the PC, with the letter as evidence. It is the PC's understanding that some residents have been registered with this surgery since the 1960s. Some people receiving this letter could be considered clinically vulnerable. Of course, anyone with mobility issues finds catching the bus to Sellindge makes that surgery accessible (compared to the surgeries in Hythe), therefore the proposed cut in bus services would impact on people with limited mobility and this becomes a not only a well-being but also an equalities issue. (see article below on bus services) It is worth noting that other local GP surgeries were unaware that Sellindge was taking this action, with one GP practice in Hythe insisting that the only photographic evidence valid to register with them was a passport or driving licence, thus causing more distress. Please note it has now come to our attention that the people who received these letters then received a text explaining that should phone the surgery and that they were not required to register with another surgery after all. Another complaint has been raised by the PC, requesting answers as to why the letter was sent out in the first place and given current proposed residential developments and the national shortage of GPs, will this type of action/threat impact on residents in the future? We will, of course, report back on the response we receive to our complaints. We write this so that you know the well-being of our community is important to us. If you have any concerns, please do not hesitate to contact your Parish Councillors.

EVER WONDERED WHAT GOES ON AT LYMPNE VILLAGE HALL

All activities occur weekly unless stated. If you are interested in any of the activities please contact the hall direct at
chair@lympnevillagehall.co.uk

Brownies and guides
East Kent Karate Club
Fun For All
Hythe Bridge Club
Lymgne Youth Club
Lymgne Fellowship Group (monthly)
Lymgne Lunch Club (Monthly)
Lymgne Short Mat Bowls (Twice weekly winter only)
Punch and Judy Play Group (Daily)
Studying History and Archaeology in Lymgne (Monthly)
Shepway Swing Band
Stanford with Postling WI (Monthly)
Table Tennis
Yoga Club
Film Club (Monthly)

SHOCK AS THREAT TO AXE BUS FOR LYMPNE ANNOUNCED

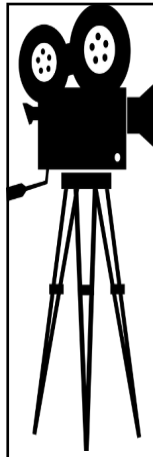
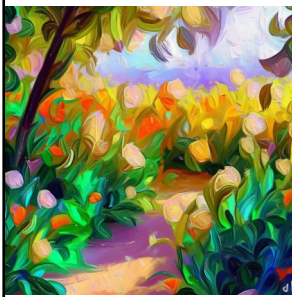
News that the number 10 and 10a Stagecoach bus will no longer stop at Port Lymgne or Lymgne Village from September has left many bemused as to the logic of this decision. If this decision is agreed the many people who rely on the bus service as their only means of transport will in effect be cut off from being able to go to nearby Hythe or Sellindge for health appointments, shopping and getting to nearby schools. One local resident stated that his family use the bus up to 5 times a week and are unsure what they will do in the future. Lymgne is not alone as other villages around Kent are receiving similar news. KCC Councillor Jennie Hawkins and our District Councillors John Wing and Jeremy Speakman are fighting to save the route and have set up a petition which can be found at https://actionnetwork.org/petitions/save-our-essential-bus-services?source=direct_link&. The Parish Council are also writing to Stagecoach to impress upon them the need to revisit this decision.

District Council Leader Jim Martin is also requesting that Stagecoach think again stating "We are not just talking about services which are nice to have - these routes are vital for residents getting to work, to hospital or to school or college. Reliable, accessible and efficient public transportation is what our community deserves, particularly at a time when climate change is a clear signal that we should be leaving cars at home."

We would encourage as many people to sign the petition on line .If this is not possible please send your objections to the Parish Clerk at lympnepc@outlook.com. Your comments will be forwarded to the District and County Councillors.

KENT GARDENER

Oh dear, the weather is causing some problems this year, but looking back July was very dry last year. Perhaps we need to accept our seasons are changing and prepare. When replanting look for plants that do well whatever the weather. Lavender, salvias, sedums and silver or hairy leaved plants resist drought as does verbena bonariensis and there are many others. When planting out dig a hole, water well and let it drain, gently drop the plant in, back fill and water again to settle the soil and create a slight saucer shape around the stem so the water drains towards the roots. All plants need watering until well established. Gray water, saved from washing hands, vegetables and cooking, once cooled, is good for borders. Prioritise new plantings, containers and vegetables. Water the roots, not the foliage, and place saucers under pots if possible. A good layer of compost over the ground in spring, before it dries, out will help. Don't forget the wildlife will need clean water for drinking and bathing. Although lawns don't look good when yellow, grass will soon become verdant once more with a heavy shower so hold off here. Dead heading annuals and perennials will keep them colourful for longer. Once a plant set seeds it thinks its job done and annuals will die so remove the seed heads unless you want to keep seed for next year. Likewise harvesting vegetables little and often will encourage them to continue cropping. Lift new potatoes as needed as the skins start to harden and don't rub off easily once above ground. Happy Gardening.



LYMPNE VILLAGE HALL FILM CLUB

IN THE HARRY MARGARY HALL
Films will be shown every 4th Tuesday of the month (not December).

MAKE A DATE IN YOUR DIARY FOR THIS POPULAR VILLAGE EVENT. ALL PROFITS GO TO THE VILLAGE HALL FUND.

7.15 for a 7.30 start
FREE MEMBERSHIP

Entrance fee of £5.00 includes refreshments and lucky draw ticket.

Showing on Tuesday 25th July: **DOWNTON ABBEY - A NEW ERA**

The second lavish film about the Crawleys, full of exuberance and glamour, plus tears of joy and sadness. A perfect film for a summer evening!

Showing on 22nd August : Sandra Bullock and Ryan Reynolds in **THE PROPOSAL** – a laugh-out-loud romantic comedy about a couple who have to pretend to be engaged in order to keep their jobs.

We reserve the right to show a substitute film should the need arise or to refuse admission. Children under 16 must be accompanied by an adult (ID will be requested).

Home Care With a Difference



Tailor made to your individual requirements

- Award winning care
- Personal care services
- Companionship services
- Highly trained CAREGivers
- Home help services

If someone in your family needs a little help
please call us on **01303 847899**

www.homeinstead.co.uk/folkestone
300 Cheriton Road, Folkestone, Kent, CT19 4DP

Home Instead
SENIOR CARE
To us, it's personal.

Each Home Instead Senior Care® franchise office is independently owned and operated. Copyright © Home Instead 2017.

Quilter Financial Advisers



Local Financial Advice

Tailored specifically for you

I live in West Hythe and can help you with advice or reviews, whether for businesses or personally on any of the following products:

- ▶ Retirement Planning
- ▶ Investments
- ▶ Mortgage Protection
- ▶ Income Protection
- ▶ Business Protection
- ▶ Inheritance Tax Planning
- ▶ Pensions and Transfer Advice
- ▶ Mortgages and Re-mortgages
- ▶ Critical Illness cover
- ▶ Life Cover

Transferring out of a Final Salary scheme is unlikely to be in the best interests of most people.

For a **FREE** initial consultation please contact:

Corinne Gibbons DipPFS CeMAP
Financial Planning Consultant
T. 01303 653425
E. corinne.gibbons@quilterfa.com
W. quilterfinancialadvisers.co.uk

AUTUMN MEDITATION COURSE

Learn some wonderful skills to keep your mind fit
And to help support your health
And wellbeing during these difficult times.
Commencing Saturday 7th October 2023

10.00am - 12.30pm

For 8 weeks

At Lympne Village Hall

For more information and to book a place

Contact Ellen: Tel 01303 230604 or

07740857109

Email: ejgarrard2712@gmail.com



DOG MESS ON THE RISE

To our responsible dog owners we thank you! I thought I would say this before the following report. We have been getting reports of a rise in dog mess being left on roads, footpaths and at the playing fields. A particular "hot spot" seems to be Berwick Lane. This has been reported to the District Enforcement Officers, but we ask that those not so careful owners please clear up after your dogs and use the many litter bins which are dual use (rubbish and dog waste). Apart from looking terrible this is a specific health risk especially for young children. Thank you for your help in keeping our village clean and tidy.

David Ian

REMOVAL SERVICE
FURNITURE & BEDS

LET US MOVE YOU

Providing Flexibility to make your move run smoothly for you

- Local, National & European Removals
- Home Office or Commercial
- House Clearance & Disposal Service Available
- Short Notice No Problem, Same Day Service Available
- Storage Facilities
- Full Packing Service Available
- No Job Too Small
- CALL THE EXPERTS



www.davidianfurniture.com

CALL NOW FOR A FREE QUOTE
01303 264052

Dymchurch Road | Hythe | Kent

Email: sales@davidianfurnitureltd.com



CELEBRATING 150 YEARS!



JOHN WILLIAMS & COMPANY

EST. 1870

Roofing & Building Maintenance
Specialists

When Quality Matters

01303 265198

Your Local Family Business with a National Reputation

www.johnwilliamsroofing.co.uk

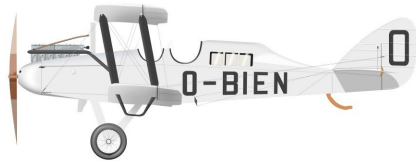
books he has written and TV interviews on the subject. His books will be on sale on the night.

Our meeting start time is 7.30pm. Admission £2

We are sorry to report one of our regular attendees Glyn Richards has died suddenly. He was planning to assist in a forthcoming presentation by David Goldsmith. Our thoughts are with his family at this time.

After a reshuffle of our forthcoming programme, our September presentation will be made by John Simpson as he looks at the many Famous Faces Connected with Lympe Airfield. His book Tales of Lympe Airfield continues to sell well. Please call or email John if you would like a copy.

Sabena '100'



Memorial flight 23 May 1923 - 23 May 2023
Brussels - Ostend - Lympe
Airco DH9C O-BIEN
Piper PA-28RT-201T Turbo Arrow IV OO-SLA



Lympe Airfield
History Society

This month we look at a recent 100th anniversary celebration flight by Belgian aviation historians which included a Lympe Airfield visit.

Sabena 100
By John Simpson

On the 23rd May this year an anniversary was celebrated with a flight from Grimbergen near Brussels via Ostend to Lydd. It was one hundred years ago that the now defunct Belgian national airline made its inaugural flight from the Belgian capital via Ostend to Lympe.

I had been contacted by Frans van Humbeek a historic aviation journalist and author earlier this spring to say that he was going to fly with two colleagues to the UK to celebrate the original flight. Bill

West and I agreed to meet the flight at Lydd and bring them back to Lympe to have a look over the old airfield and Lympe Churchyard. The original flight was made by Albert van Cotthem in an Airco DH9C registered O- BIEN principally carrying mail. The 2023 flight was made by a Piper Turbo Arrow IV registered OO-SLA.

On a very pleasant day, we met Frans and his two pilots; Vinciane Labat (an ex Sabena Flight Attendant) and Peter Kirchen (an ex Sabena Flight Engineer on DC10's and Boeing 747's) and came back to Lympe to guide them over the old airfield. Time was limited as the return flight was to be made about two hours later. They also wanted to see Lympe Churchyard and look at the pilot related graves including Pilot Officer Albert van den Hove d'Ertsenryck who was killed on the 15th September 1940 in his Hurricane. He was exhumed and reburied in Belgium after the war, but a marker is present indicating where he was buried. Another Belgian in the RAF, Pilot Officer Mathieu Morel was also buried there in November 1944 after crashing in his Spitfire XIV attempting to land, but no marker exists as to his first burial at Lympe. The RAF section of the churchyard was studied and explained. Other aviation related graves were also viewed with interest, including Bill Davis and Alex Black who both died in accidents and John Smith, a Skyways pilot who died of natural causes.

For information about the Lympe Airfield History Society, contact:
John Simpson on 07508 708725 or email:
johnsimpson43@btinternet.com

STUDYING HISTORY AND ARCHAEOLOGY IN LYPNE (SHAL)

On a cold, wet June day a group of SHAL members enjoyed a fascinating tour of the gun batteries at Wanstone Farm, set back from the white cliffs in Dover, and a guided tour of the Fan Bay Deep Shelter. Since WW2 the site is now a National Trust property and a group of their volunteers have worked hard over recent years to clear the site, research and interpret life on the cliffs during the war years.

A small group of their volunteers showed members around an anti aircraft battery of 4 guns, named 'Jane' and in a circle, forming a line of flak which enemy planes flew into blocking the engines and bringing them down. The next feature was a massive gun emplacement (D2) supporting a huge gun, capable of firing into France, and an opportunity to stand on the site where Churchill had stood. The group then moved to Fan Bay, observing 6" gun emplacements and headed down the steep stairs to end up 23m below the surface deep into the chalk where the first tunnel housed 180 men working, sleeping in rows of bunks and taking shelter when not manning the guns. Further on in a drier section there were two large shells in the roof of the bare chalk, evidence of early sub-tropical climate. Continuing outside onto the cliff face there were two mounted WW1 sound dishes. The tour ended with the return journey back to the surface. Our appreciation to Fan Bay volunteers John Jarvest and Gordon Wise and colleagues for this fascinating tour.

The next meeting on 18 July will be a talk by SHAL member, Janet Powell, on a revolt in the 1930s about nearby tithes.



NEWS LETTER
DIRECT TO YOUR
IN BOX? -
SAY NO MORE

If you would like to receive this newsletter direct to your email each month please copy the following link into your preferred browser and subscribe to our E-newsletter service.

<http://eepurl.com/hfeE9v>

Alternative scan the QR code to be taken to the subscription form. Only a first name and an email are required.

HELP THE COUNCIL SAVE
SOME TREES AND
SOME MONEY

ST STEPHENS CHURCH

SERVICES AND EVENTS IN JULY

2nd Parish Communion	11.00 am
9th Hooba Family Service led by Sunday Club	11.00 am
15th Coffee Morning	10.30-12.30am
16th Holy Communion/Morning Worship	11.00 am
23rd Parish Communion	11.00 am
30th Benefice Service at Saltwood	10am

SUNDAY CLUB Meets at The Lads' Club, Rectory Lane, Saltwood, CT21 4QA, 10-11am during term time. We have a wonderful time with all sorts of art & crafts and cooking, games and lots of drama. Fun groups for children aged 3-10 years.

The Monday Club for young people aged 11 - 16 years is also held from 5.30 - 7.00 pm at its usual venue. New faces to both groups are always very welcome.

For more information ring: Christine Clover on 0300 0301662, text: 07379 877846 or email: christineclover@lympneandsaltwoodchurches.uk.



Come and join us at Lympne & Saltwood Toddlers 10 - 11:30am Thursday mornings in the Harry Margary Hall, Aldington Road, Lympne CT21 4LE



ST STEPHEN'S CHURCH COFFEE MORNING SATURDAY 15th JULY 2023 10.30am - 12.30pm

Come and join us for coffee, cake and savoury bakes Well behaved dogs welcome

Proceeds to maintenance of the church plus a donation to this month's nominated charity:
HOME FARM TRUST LYMPNE PLACE

Celebrating 65 years

ANNUAL EXHIBITION

28 July to 12 August 2023

Marsh Academy, Station Rd, New Romney TN28 8BB

1958 - 2023

10.30am to 4.30pm

Admission FREE

Romney Marsh Art Society

www.romneymarshartsociety.co.uk

Please display this page as a poster

LYMPNE FELLOWSHIP

Our June meeting saw us enjoying a lovely sociable lunch at the Red Lion in Hythe. With good food, wine or soft drinks and friendly service, not to mention having lunch amongst friends, everyone had a good time. We all look forward to our next one.

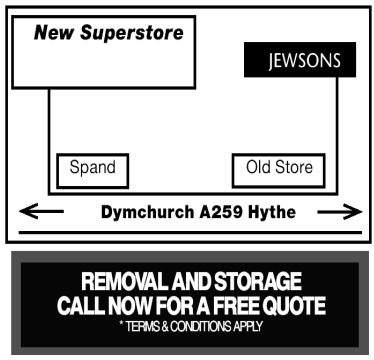
Lympne Fellowship normally meets at 1.15pm in the Harry Margary Hall on the 2nd Thursday of the month, with a programme of interesting and informative talks and activities. For further information about our group, please contact Jill Page on 01303 263756.

JUNE COFFEE MORNING

With the Bellingring Competition in full swing at our last coffee morning, we raised a total of £193.05, so a big thank you to everyone who came and supported us. A donation of £60 will go to Hythe Dementia Awareness Forum.



Dymchurch Road, Hythe, Kent
01303 264052
Email: sales@davidianfurnitureltd.com



OPEN 6 DAYS A WEEK
Mon - Fri 9am - 5.30pm Sat 9am - 5pm

TRADING STANDARDS APPROVED

working in partnership with **Checkatrade**

10% Discount for Lympne Residents at



**LYMPNE
PARISH COUNCIL
CONTACT
DETAILS**

If you have any queries regarding local issues, or any other matters you wish to raise, you can contact Lympne Parish Councillors

Current Members

**Anne Beales - Chair,
Mike Boor - ,
Kerry Boyland-Wood
Claire Yates and
Michael Potter
Judith East
Darren Burden**

Correspondence should be sent to the Parish Clerk

**Jeff Lawrence
29 Honeywood Close
Lympne
Tel: 01303 883 228
e-mail: lympnepc@outlook.com**

squiggle

**WILLS
TRUSTS
POWER OF
ATTORNEY
PROBATE**

Death isn't something most of us want to talk about or think about. And why would we? But what we DO want is for our loved ones to be looked after when we're gone.

And yet, nearly half of us don't have a will or even a plan for our estate when we die. It's something many just don't get round to - despite knowing that we should.

Book your free consultation with Squiggle today.

01233 659796

www.squiggleconsult.co.uk

Squiggle Consult Ltd
11 Park Barn, Evegate Business Park, Mersham, TN25 6SX
Registered Company - 10816512

**County and District
Councillors Contact details**

KCC Councillor Jenni Hawkins

jenni.hawkins@kent.gov.uk

District Councillors

John Wing

john.wing@folkestone-hythe.gov.uk

Jeremy Speakman

jeremy.speakman@folkestone-hythe.gov.uk

**OIL
BOILER
SERVICING**

INCLUDES NOZZLES & HOSES

£150 +VAT

CONTACT US :

www.baldwinalter.co.uk
office@baldwinalter.co.uk
01304 226611

*baldwin
salter*



**REFUSE COLLECTION DATES
JULY 2023**

**Recycling (Purple Lid/Black Box) and
Food Waste will be collected on:**

Tuesday 11th and 25th

**Non-Recyclables (Green Lid) and Food
Waste will be collected on:**

Tuesday 4th and 18th

Garden Waste Collections 5th and 19th

**Please do not put the lid on the Black Box—
use the food waste container or a
heavy object.**

OVERFLOWING PUBLIC BINS

**YOU can report overflowing
public bins on line**

www.folkestone-hythe.gov.uk/full-bins

LOCAL TRADES

LYMPNE PARISH COUNCIL CANNOT ACCEPT RESPONSIBILITY FOR THE ACCURACY OF ANY OF THE DETAILS ADVERTISED. YOU ARE STRONGLY RECOMMENDED TO TAKE APPROPRIATE ADVICE BEFORE ENTERING INTO ANY COMMITMENT.

STUDIO J HAIR SALON LTD

1a Belcaire Close Lymgne
A small family business
with a big heart

"Wella Professional" products used
and also available to purchase.

All services
to cater your hair needs
with over 30 years' experience.
01303 267877

www.studiojhair.co.uk



ACC ELECTRICAL

Fuse board changes,
cctv,alarms, PAT
testing, smoke alarms,landlord
safety checks,
security,lighting,rewires, smoke
detectors and much more!
Free Quotations and friendly
reliable service
01303 211 011/07595336880
info@accelectrical.co.uk
www.accelectrical.co.uk

ZENON

DECORATING

High quality painting and
decorating services for internal and
external works.

References available.
Call or message Adam on:
t: 07958546519

e: info@zenondecorating.co.uk

TAXI IN THE VILLAGE.

Short, long or any distance.

Airport, docks, etc.

Ask for a quote.

Speak to Geoff

Phone 07703 444 814

Accountant in the Village
Bookkeeping, CIS and VAT Returns
Sole traders, partnership and
companies accounts preparation
Personal Tax, Business Tax and
Corporation Tax
Tel: Mariana Mackenzie:
07805 653103



07745 532075

Mobile Foot Health Practitioners.
Treating and managing foot and nail
conditions, corns, callus, fungal,
fingernails, diabetic foot care

www.eastkentfootcare.co.uk



PUNCH & JUDY PLAYGROUP

Quality care and
learning for
2-4 year olds
At Lymgne Village
Hall Term time only
Mon-Fri
8.30am-3pm,
Weds 8.30am-1pm

Tel. no: 07527 111584 e.mail:
info@punch-and-judy.org.uk
or visit www.punch-and-judy.org.uk

LOCAL BATHROOM and KITCHEN FITTER

Reliable, professional, 20 years
experience fitting bathrooms, tiling,
plumbing and general building work.
Call Andrew on 07788 728 787 for a
free estimate.

DN PLASTERING SERVICES

Local, Trustworthy & Reliable
Over 25 Years Experience
Call Darren 07932 002 442
dnplasteringservices@gmail.com

DILTON MINI SKIP HIRE
Ballast, hardcore, sand,
topsoil supplied. Registered waste
carrier.
Phone 01303 812 448, or
Mobile 07799 433 754

ASHTON TREE CARE
Hedge cutting , stump grinding ,
tree surgery
All work fully insured
Contact 07929 627 622
ashtontreecare@gmail.com

CURTAINS
Handmade
curtains,blinds and soft furnishings.

Curtain alterations.

Call Valery Wren
01303 237 755

WRAIGHT'S MOWERS
NEWINGREEN (A20)
Servicing, Repairs, Sharpening
Spares and Sales
all makes of petrol & electric mowers.
Benham Water Farm,
Ashford Road (A20)
Newingreen, CT214JD
Opposite old race course
Tel 07733293315

PLUMBER
City & Guilds qualified
Affordable, Reliable and Local
All work fully insured and
guaranteed. Wide range of hot
and cold water services. See
website for further details,
rates and customer feedback.
Call now on 07899 034 695
for a no-obligation, free quote
or visit our website:
www.condicoplumbing.co.uk

THE EXECUTIVES SUITE
Virtual Support Service
Remotely supporting time limited
business owners
with administrative tasks.
Travel, diary management,
inbox detox & lifestyle
management.
Contact Natalie Dowsett at
natalie@theexecutivesuite.co.uk



K.P Decorating

- Internal Decorating
- External Decorating
- Plastering
- Access all areas

Call: 07956455720
www.kpdecorate.com

LOCAL TRADES

PAINTING, DECORATING & HANDYMAN

Interior and Exterior – All types undertaken. FREE ESTIMATES.
30 YEARS EXPERIENCE
Call Mick Cockburn
Mobile 07769 221 871



CN ELECTRICAL DOMESTIC & RESIDENTIAL

New Sockets, Fault Finding, Rewires, Lighting, Consumer units and much more!
NICEIC REGISTERED ELECTRICIAN
Contact Chris
Mob : 07826 505671
www.cnelectrical.co.uk
info@cnelectrical.co.uk



TAI CHI

Suitable for all ages and levels of fitness
Every Friday 1215
Lympne Village Hall

www.taichiforyou.co.uk
CONTACT- 07587 167 756

YOUR COMPUTER PROBLEMS SOLVED

Call out service. PC/Laptop repairs, slow running, broken screens, memory upgrades, virus removal, data recovery. Enquiries welcome.
Call Rob Gardener 07807 180 906 or 01304 219 471
Email robert.gardner@talk21.com

Kingdom
CARPET CO.

- Carpets Supplied & Fitted
- Carpets Professionally Cleaned
- Carpets Whip Edged & Cotton Bound

Whatever your carpet need, give us a call for a FREE estimate / assessment.

Over 50 years combined experience.

07943 764 442

Email: kingdom.carpet.co@gmail.com

RICHARD AJ THOMPSON LTD
Plumbing & heating engineer
Gas Safe Registered-No 513449,
22 years experience.
Central heating boiler servicing,
repairs and installations.
All domestic plumbing repairs,
Water softeners, gas fires, cookers
and water heaters.
Landlord's Safety Certificates.
Tel 01303 266 273
Mob 07540 333 250

HANDYMAN AND BUILDING MAINTENANCE

Roofing, Guttering,
Plumbing, Drains,
Painting, Decorating,
Plastering
Free Estimates
References available

Contact 07836 665382

SPOTLIGHT PEST CONTROL SERVICES LTD

British Pest Control Association member.
General pest control including rats, mice, moles, wasps, ants, fleas, bird spikes and general proofing Fast, friendly and reliable.
Contact Dave on 07715211899.
info@spotlightpestcontrolkent.co.uk
www.spotlightpestcontrolkent.co.uk

PIANO LESSONS

Enjoy learning the piano with an experienced teacher in a pleasant home near Lympne Primary School. Children and adults of all abilities welcome. It's never too late to start - just bring your fingers and a love of music!
Contact Kate Chesterman,
Bachelor of Music (Hons)
Tel 07807 156 884 or Email:
lympnekate@gmail.com

LYMPNE VILLAGE STORES AND POST OFFICE

OPEN from 830-530 weekdays
Saturday 830-2pm
Sundays CLOSED

Visit us for your everyday needs Milk, bread, eggs and your daily newspaper or magazine and the National Lottery.

VILLAGE HALL BOOKINGS
VISIT
<http://www.lympnevillagehall.co.uk/bookings/>

John Williams & Company

Roofing and Building Maintenance
Slating, Tiling, Flat Roofing, Lead-work Gutters, Fascias and Soffits
Brickwork, Carpentry, Plastering
Free Quotations and Advice
Call: 01303 265198
Stone Street, Lympne, CT21 4LD
www.johnwilliamsroofing.co.uk

EX-JOB AND DOGS

Retired local police officer offering
Dog Walking, Dog Day Care
Boarding in Home Environment
Home Watch Service Long/short term
Including Cat Care
Contact Kerry
with your requirements
CONTACT 07791 095 895
exjob17@gmail.com



I'm Michelle, local branch owner for Sales and Lettings for The Good Estate Agent.

We are a 13 year old family run, Nationwide business, with our Head Office in Lympne.

I take pride in my high quality customer service and my doors don't close at 5pm!

For a Free Sales or Lettings valuation please call 07848015443 or email
michelleferbrache@thegood.co.uk

REMOTE WORK OFFERED VIRTUAL ASSISTANT & GENERAL ADMIN SUPPORT

I can offer a range of support on an ad-hoc hourly, weekly or monthly basis.

- Checking & responding to emails & customer queries, record-keeping, diary management, typing, etc;
 - Facebook Group admin;
 - Zoom calls;
 - Proofreading, Copy Editing;
 - Excel Databases.
- For specific requirements, please ask.

I have a broad range of experience. I am detail-orientated, reliable, resourceful, self-motivated, and an adept communicator.

Steffie Betts - gmsteffie@gmail.com