

LYMPNE NEWSLETTER FEBRUARY 2023



DELIVERED TO
HOMES IN
LYMPNE,
NEWINGREEN,
COURT-AT
STREET AND
WEST HYTHE
ROAD

IN THIS ISSUE
New Voting laws, become a
councillor, playing fields
update,Stutfall Castle brought to
life, new groups announced

NEW LEGAL REQUIREMENT FOR VOTERS AT THE POLLING STATION FROM 04 MAY 2023

There is a new legal requirement for voters at the polling station from 04 May 2023.

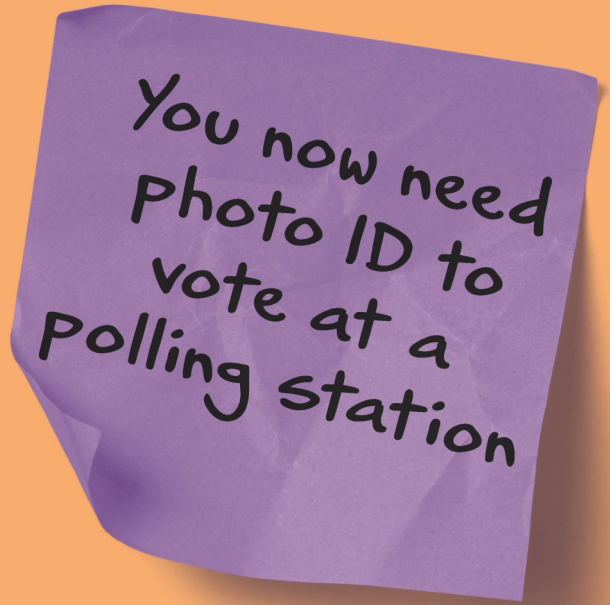
Voters will have to present a valid form of photographic ID to be issued a Ballot Paper. This requirement is for all elections, including any by-elections that take place after this date.

It will be the law - If a person can not provide ID they will not be able to vote.

If a voter does not have valid ID, they can apply for a Voter Authority Certificate (VAC) at the gov.uk website, in person at the Civic offices or by post. The service to apply for a VAC will not be live until Monday, 16th January. If you have any questions you can also contact the electoral commission on 0800 3280280. Your local Parish Clerk may also be able to assist with information.

You do not have to provide photo ID if voting by post, however if you vote by proxy (allowing someone you trust to vote on your behalf) they will need to show ID. There will be an advertising campaign, and a page has been set up on the Parish Council Website—
www.lympne.net

The
Electoral
Commission



No ID? You can apply for free voter ID

Find out more at

electoralcommission.org.uk/voterID

or call 0800 328 0280



NEW YEAR NEW CHALLENGE

**2023 IS ELECTION
YEAR FOR District
and Parish Councils.**

Elections will take place in May 2023

Anyone over the age of 18 who is a British, Commonwealth or Irish Citizen and has lived or worked permanently in Lymgne in the 12 months prior to the elections can stand for election and become a member of Lymgne Parish Council

Do you have what it takes to become a Councillor? Do you want to influence village life and make changes for the benefit

of those that live here?

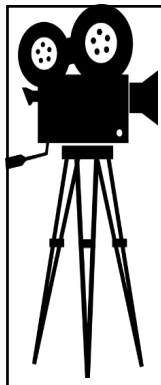
More information will be posted in this newsletter as we approach the elections but if you want to know more please contact the clerk or visit

[www.kentalc.gov.uk/
Becoming_a_Local_Councillor_22718.aspx](http://www.kentalc.gov.uk/Becoming_a_Local_Councillor_22718.aspx)

Lots of information can be found at the above website with case studies, how to apply and a timetable leading up to the elections.

The Parish Clerk can be contacted at
lympnepc@outlook.com

01303 883228



LYMPNE VILLAGE HALL FILM CLUB

IN THE HARRY MARGARY HALL
*Films will be shown every 4th Tuesday of
the month (not December).*
**MAKE A DATE IN YOUR DIARY FOR
THIS POPULAR VILLAGE EVENT.
ALL PROFITS GO TO THE
VILLAGE HALL FUND.**

7.15 for a 7.30 start
FREE MEMBERSHIP
Entrance fee of £5.00 includes refreshments and
lucky draw ticket.

Tuesday 28th February

MRS HENDERSON PRESENTS

*Judi Dench and Bob Hoskins star in a charming
comedy drama about the Windmill theatre during
wartime.*

**"THE SHOW MUST GO ON, BUT THE CLOTHES MUST
COME OFF!"**

Showing on 28th March:

ELVIS starring Austin Butler and Tom Hanks

We reserve the right to show a substitute film should
the need arise or to refuse admission. Children under
16 must be accompanied by an adult
(ID will be requested).

A ROMAN VIEW



An artists impression of what Stutfall Castle
Lympne may have looked like is now
proudly displayed on the escarpment path
looking over the Marsh. Walkers can now
read about the historic location and view
the original remains of the castle in the
fields of the escarpment from the footpath.
The information board, funded by the
Parish Council, was created by a local artist
with information provided by Studying
History and Archaeology in Lympne group
(See page 4 for details of this group).

Home Care With a Difference



Tailor made to your individual requirements

- Award winning care
- Personal care services
- Companionship services
- Highly trained CAREGivers
- Home help services

If someone in your family needs a little help
please call us on **01303 847899**

www.homeinstead.co.uk/folkestone
300 Cheriton Road, Folkestone, Kent, CT19 4DP



Each Home Instead Senior Care® franchise office is independently
owned and operated. Copyright © Home Instead 2017.

To us, it's personal.

Quilter Financial Advisers



Local Financial Advice

Tailored specifically for you

*I live in West Hythe and can help you with advice or reviews, whether
for businesses or personally on any of the following products:*

- ▶ Retirement Planning
- ▶ Investments
- ▶ Mortgage Protection
- ▶ Income Protection
- ▶ Business Protection
- ▶ Inheritance Tax Planning
- ▶ Pensions and Transfer Advice
- ▶ Mortgages and Re-mortgages
- ▶ Critical Illness cover
- ▶ Life Cover

Transferring out of a Final Salary scheme is unlikely to be in the
best interests of most people.

For a FREE initial consultation please contact:

Corinne Gibbons DipPFS CeMAP
Financial Planning Consultant
T. 01303 653425
E. corinne.gibbons@quilterfa.com
W. quilterfinancialadvisers.co.uk

LYMPNE PLAYING FIELD

The priority for 2023 will be fund raising for the new Children's Playground to replace the existing one which is starting to show its age. As many of you will have seen the play house had to be fenced off, and although now repaired all the old play equipment has only a limited lifespan left.

The Woodland Trust have donated 315 shrubs and trees for planting around the edge of the field, which are being delivered mid March, for planting before the end of March. Any volunteers wishing to plant a tree and do their bit for the environment are welcome to come along. The plants are only in the form of whips, so there is no heavy lifting or digging required, details to follow in the March Green Sheet. Cllr Anne Beales has generously sponsored the purchase of a picnic bench which will be installed early spring, and the Parish Council has bought a new double waste bin, so hopefully no more problems with pesky seagulls scattering rubbish from the often full bin next to the Youth Shelter. We hope to complete the Pump Track this year, so if anybody has any free topping material to reinforce the hump features this will be gratefully received, work will include erecting a circuit route plan and track information board.

If you can help or wish to volunteer please contact lympnepc@outlook.com

A NEW MUSIC GROUP/SCHOOL OF ROCK!

EXPRESSIONS OF INTEREST REQUIRED

Weekly at Lympne Village Hall Sundays starting 19th March 6.30-9.30 pm.

Want to jam along/form a band/sing? Some basic ability to play is desirable, also your own guitar/keyboard/drums etc. but if you have none of these, don't give up on your dreams - come along!

Initial sessions are free of charge. Experience playing with an "on stage" rock band set, sing alone or as a backing group, try out our drum kit, guitars etc., or bring your own preferred instrument. Make new friends, or just enjoy making music: rock/country/blues etc.

If interested in coming along, please text/phone/email Phil on 07512 312516 or at phildcarter@googlemail.com

MINDFULNESS MEDITATION COURSE

Next Course Commencing

Friday 3rd March

A perfect ending to a busy week

For 8 weeks

Location: The Harry Margary Hall, Lympne

Time: 3.00pm-5.30pm

For more information and to book a place
Contact Ellen: Tel 01303 230604 or 07740857109
Email: ejgarrard@2712gmail.com

David Ian REMOVAL SERVICE
FURNITURE & BEDS

LET US MOVE YOU

Providing Flexibility to make your move run smoothly for you

- Local, National & European Removals
- Home Office or Commercial
- House Clearance & Disposal Service Available
- Short Notice No Problem, Same Day Service Available
- Storage Facilities
- Full Packing Service Available
- No Job Too Small
- CALL THE EXPERTS



www.davidianfurniture.com

CALL NOW FOR A FREE QUOTE
01303 264052

Dymchurch Road | Hythe | Kent
Email: sales@davidianfurnitureltd.com



ST STEPHEN'S CHURCH, LYMPNE

PRESENTS



SHEPWAY/HYTHE

USA SWING BAND

SATURDAY 25 FEBRUARY 2023

3.00 pm

Tickets £10, Children under 16 £5

including a cream tea and glass of Prosecco,

OR tea/coffee/soft drink

available from Lympne and Saltwood Churches

or contact Fiona Jarvest

fionajarvest22@gmail.com

LYMPNE AIRFIELD HISTORY SOCIETY

We had a very good attendance for David Goldsmith's presentation on January 3rd on a wet and windy night. His Cross Channel First Flights since 1785 was well received. The March 7th presentation will be presented by Adam Fraser and Catherine Tappenden from the company Arcadis, through their *Local Sparks* outreach programme consulting on archaeology and heritage. Their subject is the 1919 record breaking flight to Cairo of Harry Yates in 1919, featuring espionage, daring and flying skill. The preview video I have seen is very intriguing. We are in for a very interesting evening!

Please note there is a £2 charge per entrant at our new venue and tea and coffee is available. Should you wish to bring your own alcohol, this is permitted. Toilet facilities are on site and the church is heated.

This month we look at another record breaking inter war aviator with connections to Tommy Rose from the January issue, and no stranger to Lympne.

H.L. Brook

By John Simpson

H.L. Brook (Harold Leslie) was born in Bradford on 11th October 1897, but moved to Harrogate where he lived for many years. In his youth he indulged in motor racing and later built sailplanes and gliders. He then joined the *Yorkshire County Aviation Club* at Sherburn-in-Elmet and tutored by Mr Cudemore went solo after four hours in 1933. He bought Jim Mollison's De Havilland Puss Moth *Heart's Content*. With only 43 hours in his logbook he set off on a survey flight for the Mildenhall-Melbourne MacRobertson race of 1934. He was forced down from 12000 feet, with iced up wings on Mont Lozere in the Cevennes National Park range in France near to Genolhac, Gard. Luckily virtually unscathed, he wandered around in the snow for five hours. With local help he retrieved the engine and instruments. The *County Members* pub in Lympne was an inn at the time. Their visitors' book shows Brook spent the night there on 27th March. His entry identifies G-ABXY as the aircraft he was flying. This was the Puss Moth, *Heart's Content*. Confirmation that his point of departure was Lympne!

So next he took part in the October 1934 MacRobertson air race to Australia in the first Miles Falcon, built for him by Phillips & Powis fitted with the salvaged engine from the Puss Moth. His companion was Miss E. Lay In October 1934. They were well down the finishing order taking just short of 27 days, but unlike others did complete the total flight.

In 1935 Brook left Lympne to fly solo to Australia, but on this first occasion he crashed his Miles Falcon at Mersa Matruh in Egypt. Having later made it to Australia, he achieved the return record from Darwin to Lympne in seven days, 19 hours and 50 minutes. The record was officially held by Jim Mollison and this was beaten. An unofficial record by Australian Jim Melrose was also beaten. The first person to shake his hand as he exited the Falcon at Lympne was Tommy Rose. His route was Darwin, Rambang, Penang, Rangoon, Calcutta, Karachi, Athens, Rome, Marseilles and Lympne where he landed at 3.55pm local time. He encountered bad weather; rain, low cloud and heavy headwinds over the Timor Sea, but cited the worst section was between Athens and Rome, which he flew through in a gale.

The next year he flew a Praga E114 G-ADXL, a 'baby' category aeroplane powered by a 36hp Praga B engine. The Praga was Czech built, and imported by Miles with a view to licence build them in the UK. His time of sixteen days, four and a half hours was a record for a low powered aeroplane. His cruising speed was 80mph at 33mpg.

In May 1937 Brook flew from the Cape to Heston in four days and 18 minutes. The aircraft he flew was a Percival Gull 6 G-ADZO originally ordered by Amy Johnson, the last civil registered example Gull 6 in Britain.

Around this time records show he was involved in a crash in his Miles Falcon in Chadwell Heath, Essex. The aeroplane was wrecked, but he was uninjured. The date is unclear.

During the war Brook would go on to be a delivery pilot flying Hurricanes to their Squadrons for the Air Transport Auxiliary (ATA).

He died in 1965, aged 68 in Leeds.

For information about the Lympne Airfield History Society, contact:

John Simpson on 07508 708725 or email:

johnsimpson43@btinternet.com

STUDYING HISTORY AND ARCHAEOLOGY IN LYMPNE (SHAL)

The Vikings have been much maligned in their invasion into Britain just over 1200 years ago. Whilst they could be brutal they excelled in their own form of poetry and in producing a wide range of precious metal implements, weapons and decorations. This was the theme of well-known Folkestone historian, Imogen Corrigan, who gave a lively and entertaining talk at SHAL's January meeting. The first Viking raid in Britain was in 793 with more in the 9th century including the capture of York. They were not literate as they could not write in Latin, but they had a form of literature through unusual poetry with repeats of each verse for them to understand the content. Their communication was through runes which served as a type of alphabet supposedly with magic properties. They did worship gods, the names of some of them being adopted into our language, such as Thor, the god of physical strength, becoming our Thursday, and Freya, the goddess of fertility, as our Friday. Much of their communications came through depictions on implements, weapons, shields, tombstones, jewellery particularly brooches, and a large amount of coinage and other artefacts. These revealed the high quality of their craftsmanship such as soldering granules of gold to a base, which enhanced the object as well as strengthening their trading links and power, and contributing to the positive legacy they left in Britain, as Imogen explained.

We welcome Andy Linklater on 21 February to talk on 'The Archaeology of Death and Burial', and are also invited to the Airfield meeting in Lympne Church on 7th March at 7.30 -admission £2.

ST STEPHENS CHURCH



SERVICES AND EVENTS IN FEBRUARY

- 5th Parish Communion 11.00 am
12th Family Service lead by Sunday Club 11.00 am
18th Morning Worship 11.00 am
25th Folkestone/Hythe U3A Swing Band 3.00 pm
(See separate poster)
26th Parish Communion 11.00 am

Although we hope the church heating will be working again by the time you read this, it is with regret we have come to the decision to discontinue Warm Welcome on a Tuesday morning due to lack of general interest. We recognise that the church's location is not so attractive when the weather is very wet or icy.

SUNDAY CLUB

Meets at

The Lads' Club, Rectory Lane, Saltwood, CT21 4QA,
10-11am during term time.

We have a wonderful time with all sorts of art & crafts and cooking, games and lots of drama. Fun groups for children aged 3-10 years.

The **Monday Club** for young people aged 11 - 16 years is also held from

5.30 - 7.00 pm at its usual venue.

New faces to both groups are always very welcome.

For more information ring: Christine Clover on 0300 0301662,

text: 07379 877846 or email:
christineclover@lympneandsaltwoodchurches.uk.

We are absolutely delighted to announce that **Carols in the Courtyard** in December raised an amazing **£1,204.12!** which has been shared equally between the Salvation Army and St Stephen's. Thank you so much to everyone who came and donated on what was a thoroughly enjoyable evening.

Our thanks especially to Kate, Aimee and all the staff of Lympne Castle for working so hard to host this annual event.

Please note there will be no
Coffee Morning in

KENT GARDENER

Much growth has taken place in the garden since Christmas and numerous plants are beginning to flower. To make room for this, perennials and grasses can be cut down to where the new shoots are emerging but hold back on this and other tidying if frost or snow is forecast, the old material will protect the crowns and overwintering insects. In sheltered gardens pruning can start but in exposed areas wait a couple of weeks. Take down late summer clematis to a pair of buds around 30cms above the base. Late flowering shrubs like buddleia and perovskia which flower on new wood can be pruned to a strong pair of buds. Hybrid tea and floribunda roses respond well to hard pruning with vigorous growth and flowering as they flower on this season's wood. Take out dead, diseased wood and weak growth and cut just above an outward facing bud sloping away from it to prevent water collecting around it. Sometimes there is just a line across the stem, a node, where the bud will form. Aim for an open shape. The exceptions are 'David Austin' roses which flower on older wood. Prune back all growth by 30 to 50 percent and side shoots to 3 buds aiming for a rounded open shape with a mix of older and new wood. Cut out one or two older main stems in winter to encourage new growth from the base. Shrub roses that flower once and ramblers should be pruned after flowering unless the hips are wanted for colour or bird food. Cut out autumn fruiting raspberry canes as new growth emerges. Happy pruning.

Lympne Fellowship

January saw us getting our brains into action with a 'Bingo Quiz' - where we were all given individually numbered bingo cards and a set of questions to work our way through. Prizes to the first group to get a line, then the second until someone had completed a whole card. Great fun, and played while enjoying a ploughman's. Plenty of time for social chat - an afternoon enjoyed by all. Our thanks to Jill for organising the quiz and to Pam and her helpers for providing the food.

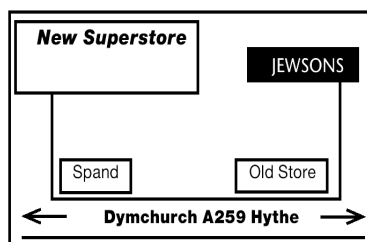
Lympne Fellowship normally meets at 1.15pm in the Harry Margary Hall on the 2nd Thursday of the month, with a programme of interesting and informative talks and activities. For further information about our group, please contact Jill Page on 01303 263756.

David Ian
FURNITURE & BEDS
SUPERSTORE

Dymchurch Road, Hythe, Kent

01303 264052

Email: sales@davidianfurnitureltd.com



REMOVAL AND STORAGE
CALL NOW FOR A FREE QUOTE

*TERMS & CONDITIONS APPLY

OPEN 6 DAYS A WEEK

Mon - Fri 9am - 5.30pm Sat 9am - 5pm

Kent
County
Council
kent.gov.uk



TRADING
STANDARDS

APPROVED

working in partnership with
Checkatrade

10%
Discount
for
Lympne
Residents
at

David Ian
FURNITURE & BEDS
SUPERSTORE

**LYMPNE
PARISH
COUNCIL
CONTACT
DETAILS**

If you have any queries regarding local issues, or any other matters you wish to raise, you can contact Lympne Parish Councillors

Current Members
Jo Howes – Chair,
Sally Edwards – Vice Chair,
Kerry Boyland – Wood
Claire Yates and
Michael Boor
Anne Beales
Michael Potter

Correspondence should be sent to the Parish Clerk

Jeff Lawrence
29 Honeywood Close Lympne
Tel: 01303 883 228
e-mail: lympnepc@outlook.com

COUNTY AND DISTRICT COUNCIL CONTACTS

DISTRICT COUNCILLORS

Cllr Doug Wade-
Douglas.Wade@folkestone-hythe.gov.uk

Cllr John Wing- Email
John.Wing@folkestone-hythe.gov.uk

COUNTY COUNCILLOR

VACANT POST

KCC WARDEN—

GILES BARNARD

07969 583915

giles.barnard@kent.gov.uk

**YOUR OPINION COUNTS
TELL US YOURS**

With the prospect of a new council in May this Year the Parish Council are starting to look at plans for the next 4 years in our village.

Some things are out of our control, but you have the chance to influence what happens within the Parish. However we need to know what you would like to see being improved, be that local facilities, road improvements, services and wellbeing. If you have any ideas please contact the Parish Council on lympnepc@outlook.com or phone 01303 883228

squiggle

WILLS
TRUSTS
POWER OF ATTORNEY
PROBATE

Death isn't something most of us want to talk about or think about. And why would we? But what we DO want is for our loved ones to be looked after when we're gone.

And yet, nearly half of us don't have a will or even a plan for our estate when we die. It's something many just don't get round to – despite knowing that we should.

Book your free consultation with Squiggle today.

01233 659796

www.squiggleconsult.co.uk

Squiggle Consult Ltd
11 Park Barn, Evegate Business Park, Mersham, TN25 6SX
Registered Company – 10816512

REFUSE COLLECTION DATES
FEBRUARY 2023

Recycling (Purple Lid/Black Box) and Food Waste will be collected on:

Tuesday 7th and 21st February

Non-Recyclables (Green Lid) and Food Waste will be collected on:

Tuesday 14th and 28th February

Garden Waste Collections 1st and 15th February

Please do not put the lid on the Black Box—use the food waste container or a heavy object.

OVERFLOWING PUBLIC BINS

YOU can report overflowing public bins on line

www.folkestone-hythe.gov.uk/full-bins

THANK YOU

**OIL
BOILER
SERVICING**

INCLUDES NOZZLES & HOSES

£150
+VAT

CONTACT US :

www.baldwinalter.co.uk
office@baldwinalter.co.uk
01304 226611

*baldwin
salter*



THE FLAT ROOFING SPECIALISTS

☎ 07454 020046

✉ theflatroofingspecialist@gmail.com

MATTHEW KIRBY



LOCAL TRADES

LYMPNE PARISH COUNCIL CANNOT ACCEPT RESPONSIBILITY FOR THE ACCURACY OF ANY OF THE DETAILS ADVERTISED. YOU ARE STRONGLY RECOMMENDED TO TAKE APPROPRIATE ADVICE BEFORE ENTERING INTO ANY COMMITMENT.

STUDIO J HAIR SALON LTD

1a Belcaire Close Lympe
Incentives for new and existing customers
Family business who welcome all with love
Tel 01303 267 877

Accountant in the Village
Bookkeeping, CIS and VAT Returns
Sole traders, partnership and companies accounts preparation
Personal Tax, Business Tax and Corporation Tax
Tel: Mariana Mackenzie:
07805 653103



07745 532075

Mobile Foot Health Practitioners.
Treating and managing foot and nail conditions, corns, callus, fungal, fingernails, diabetic foot care
www.eastkentfootcare.co.uk

DILTON MINI SKIP HIRE
Ballast, hardcore, sand, topsoil supplied. Registered waste carrier.
Phone 01303 812 448, or
Mobile 07799 433 754

ASHTON TREE CARE
Hedge cutting, stump grinding, tree surgery
All work fully insured
Contact 07929 627 622
ashtontreecare@gmail.com

PLUMBER

City & Guilds qualified
Affordable, Reliable and Local
All work fully insured and guaranteed. Wide range of hot and cold water services. See website for further details, rates and customer feedback.
Call now on 07899 034 695 for a no-obligation, free quote or visit our website:
www.condicoplumbing.co.uk



ACC ELECTRICAL

Fuse board changes,
cctv,alarms, PAT
testing, smoke alarms,landlord safety checks,
security,lighting,rewires, smoke detectors and much more!
Free Quotations and friendly reliable service
01303 211 011/07595336880
info@accelectrical.co.uk
www.accelectrical.co.uk

PUNCH & JUDY PLAYGROUP
At Lympe Village Hall. Quality care and learning for 2-4 year olds. Open Monday to Friday during term time.
830-3pm Weds 830-1300
Call 07527 111 584 or visit.
OFSTED RATED GOOD IN ALL AREAS

PROFESSIONAL MOBILE HAIRDRESSER

Cuts, Colours, Perms and Drying. Salon products used. 30 years experience. Fully insured. Call Cheryl on 07949 120 915 or email hythehairdresser@gmail.com for a price and appointment.

THE BOWEN TECHNIQUE BOWEN THERAPY IN LYMPNE
Back pain, arthritic pain, asthma, digestive disorders, migraine, practically any problem can potentially be addressed.
Lynne Rodgers, Cert ECBS.
Call 01303 268 910 or
lynnealexrogers@gmail.com

CURTAINS

Handmade curtains,blinds and soft furnishings.
Curtain alterations.
Call Valery Wren
01303 237 755



Tai Chi For You

TAI CHI
Suitable for all ages and levels of fitness
Every Friday 1215
Lympe Village Hall
www.taichiforyou.co.uk
CONTACT- 07587 167 756



High quality painting and decorating services for internal and external works.
References available.
Call or message Adam on:
t: 07958546519
e: info@zenondecorating.co.uk

TAXI IN THE VILLAGE.
Short, long or any distance.
Airport, docks, etc.
Ask for a quote.
Speak to Geoff
Phone 07703 444 814

DN PLASTERING SERVICES
Local, Trustworthy & Reliable
Over 25 Years Experience
Call Darren 07932 002 442
dnplasteringservices@gmail.com

LOCAL BATHROOM and KITCHEN FITTER
Reliable, professional, 20 years experience fitting bathrooms, tiling, plumbing and general building work.
Call Andrew on 07788 728 787 for a free estimate.

WRAIGHT'S MOWERS
NEWINGREEN (A20)
Servicing, Repairs, Sharpening
Spares and Sales
all makes of petrol & electric mowers.
Benham Water Farm,
Ashford Road (A20)
Newingreen, CT214JD
Opposite old race course
Tel 07733293315



K.P. Decorating

- Internal Decorating
- External Decorating
- Plastering
- Access all areas

Call: 07956455720
www.kpdecorate.com

LOCAL TRADES

Also find us online at www.lympne.net

PAINTING, DECORATING & HANDYMAN

Interior and Exterior – All types undertaken. FREE ESTIMATES.
30 YEARS EXPERIENCE
Call Mick Cockburn
Mobile 07769 221 871



CN ELECTRICAL DOMESTIC & RESIDENTIAL

New Sockets, Fault Finding, Rewires, Lighting, Consumer units and much more!
NICEIC REGISTERED ELECTRICIAN
Contact Chris
Mob : 07826 505671
www.cnelectrical.co.uk
info@cnelectrical.co.uk

HANDYMAN AND BUILDING MAINTENANCE

Roofing, Guttering, Plumbing, Drains, Painting, Decorating, Plastering
Free Estimates
References available

Contact 07836 665382

ADVERTISE HERE

Kingdom
CARPET CO.

- Carpets Supplied & Fitted
- Carpets Professionally Cleaned
- Carpets Whip Edged & Cotton Bound

Whatever your carpet need, give us a call for a FREE estimate / assessment.

Over 50 years combined experience.

07943 764 442

Email: kingdom.carpet.co@gmail.com

VILLAGE HALL BOOKINGS VISIT

<http://www.lympnevillagehall.co.uk/bookings/>

RICHARD AJ THOMPSON LTD Plumbing & heating engineer

Gas Safe Registered-No 513449,
22 years experience.
Central heating boiler servicing, repairs and installations.
All domestic plumbing repairs, Water softeners, gas fires, cookers and water heaters.
Landlord's Safety Certificates.
Tel 01303 266 273
Mob 07540 333 250

YOUR COMPUTER PROBLEMS SOLVED

Call out service. PC/Laptop repairs, slow running, broken screens, memory upgrades, virus removal, data recovery. Enquiries welcome.
Call Rob Gardener 07807 180 906 or 01304 219 471
Email robert.gardner@talk21.com

SPOTLIGHT PEST CONTROL SERVICES LTD

British Pest Control Association member.
General pest control including rats, mice, moles, wasps, ants, fleas, bird spikes and general proofing Fast, friendly and reliable.
Contact Dave on 07715211899.
info@spotlightpestcontrolkent.co.uk
www.spotlightpestcontrolkent.co.uk

ADVERTISE HERE
CONTACT THE
CLERK FOR
DETAILS

PIANO LESSONS

Enjoy learning the piano with an experienced teacher in a pleasant home near Lympne Primary School. Children and adults of all abilities welcome. It's never too late to start - just bring your fingers and a love of music!

Contact Kate Chesterman,
Bachelor of Music (Hons)
Tel 07807 156 884 or Email:
lympnekate@gmail.com

John Williams & Company
Roofing and Building Maintenance
Slating, Tiling, Flat Roofing, Lead-work Gutters, Fascias and Soffits
Brickwork, Carpentry, Plastering
Free Quotations and Advice
Call: 01303 265198
Stone Street, Lympne, CT21 4LD
www.johnwilliamsroofing.co.uk

EX-JOB AND DOGS

Retired local police officer offering
Dog Walking, Dog Day Care
Boarding in Home Environment
Home Watch Service Long/short term
Including Cat Care
Contact Kerry
with your requirements
CONTACT 07791 095 895
exjob17@gmail.com



I'm Michelle ,
a local Sales and Letting agent from 'The Good Estate agent'.
We are an 11 year old family run business, who pride ourselves in a high quality personal service.
If you'd like a free property valuation or you're a property owner and need any help finding a tenant or to manage your property
Please call me on 07848015443
or email
michelleferbrache@thegood.co.uk

LYMPNE VILLAGE STORES AND POST OFFICE

OPEN from 830-530 weekdays
Saturday 830-2pm
Sundays CLOSED

Visit us for your everyday needs
Milk, bread, eggs and your daily newspaper or magazine and the National Lottery.

Many Post Office Services available

Pay bills and top up
Drop and go parcel services
Cash and banking services

We look forward to seeing you soon