

# LYMPNE

NEWSLETTER  
SEPTEMBER 2019



DELIVERED TO  
HOMES IN  
LYMPNE,  
NEWINGREEN,  
COURT-AT  
STREET AND  
WEST HYTHE  
ROAD

**IN THIS MONTHS ISSUE:**  
OTTERPOOL TOWN UPDATE, DEFIB  
ARRIVES, PLAYING FIELD SURVEY  
RESULTS ARE IN, LUNCH CLUB DATES  
AND INFORMATION AND MUCH MORE  
To contact the editor ring 01303 230525  
or email [lympnepc@outlook.com](mailto:lympnepc@outlook.com)  
Website [www.lympne.net](http://www.lympne.net) or facebook

## OTTERPOOL UPDATE

**New Town Plans  
submitted by Folkestone  
and Hythe District Council  
and Cozumel.**

The plans have been reviewed by FHD Council's own planners, the review is 34 pages long, please find link to the website at end of article. The place of Lymgne

and the Airfield in the overall 'vision' goes almost unrecognised, the focus being on Westenhangar Castle and Westenhangar as a major transport hub. The overall impression is that the review is quite critical of the plans as they currently stand, especially regarding transport and plans for the A20 being re-routed.

It seems the reviewing planning officer thinks it is a good location to build a new town especially with the potential for High Speed 1 trains at Westenhangar. There is at least recognition that local communities and Parish Councils should be more involved and not enough Archaeological surveys have been conducted and there is finally concern about the impact on biodiversity.

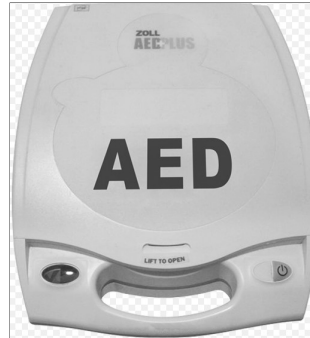
Since a large part of the proposal sits within Lymgne Parish, we will have to insist that we continue to represent the views of Lymgne residents in any detailed discussions. This assessment, although comprehensive, is clearly unaware of the concerns of our parish.

Folkestone and Hythe District Council have announced it is in the process of producing a new "green infrastructure strategy" to set out the opportunities for protecting and enhancing green infrastructure in the district. Lymgne Parish Council need to complete a Consultation survey in response.

With all the above in mind Lymgne Parish Council want to coordinate their own review of the Heritage and Biodiversity features of our Airfield to present to planners as it is lacking in the Otterpool plans review. Hythe District Green Councillor, John Wing, will be touring the Airfield at 10.30 am, 11th September, to identify and try to help save the Biodiversity of the Airfield. Residents welcome. Anyone with their own records of Heritage and Biodiversity on the Airfield please feel free to contact us, send in pictures etc, all help appreciated.



## NEW VILLAGE DIFIBRILLATOR



Last year a resident suffered a heart attack and contacted the Council to see if a defibrillator could be purchased for the village. We were very lucky that KCC Councillor Martin

Whybrow was on hand at our Parish Council meeting to offer help from the Community Fund to fully fund the purchase. The new defibrillator is now installed on the new Village Hall wall by the entrance and is available for use.

No training is required to use the defibrillator as the machine talks you through what to do! It is simple to use and to assure you it will not give a shock to someone who does not need it.

The equipment is registered with the South Kent Ambulance Service. It is expected that if you find you are in need of the equipment that you will dial 999 first. When you make contact they will be able to give you the code to the cabinet which will allow you access to the machine. The machine is set up and ready to go with the pads already attached. Should the equipment be used please contact the Council so that replacement pads can be supplied.

If you want to know how to use a defibrillator the following link will take you to instructions and videos.

<https://www.zoll.com/medical-products/automated-external-defibrillators/aed-plus/video>

If you require any further information please email the clerk at [lympnepc@outlook.com](mailto:lympnepc@outlook.com)

### NEWS FLASH

Folkestone and Hythe Dis-

trict Council issued press release this week (22/08) that they have purchased Westenhangar Castle. Cllr Monk said the Castle and park would be the centre piece for the aspirational development referring to Otterpool. For more information please visit the District Council Website.

The community speed watch coordinator has made a request to reintroduce speed checks at the County Members as a result of comments from residents

### Cheriton Motor House

[www.c-m-h.co.uk](http://www.c-m-h.co.uk)

SERVICING, MOT'S, BRAKES, CLUTCHES, TIMING BELTS

AIR CONDITIONING, TYRES, WHEEL ALIGNMENT  
& VEHICLE ELECTRICS

FOR ALL MAKES OF VEHICLE

**VOLKSWAGEN GROUP SPECIALIST**

SEAT SKODA AUDI VOLKSWAGEN

COLLECTION AND DELIVERY SERVICE AVAILABLE

CAESARS WAY, FOLKESTONE, KENT, CT19 4AL 01303 275 795

A FAMILY RUN BUSINESS TRADING FOR OVER 40 YEARS

## LYMPNE LUNCH CLUB OPENING

The Lympne Lunch Club will be starting on Friday September 13<sup>th</sup> in the Harry Margary Hall. A two-course meal followed by tea or coffee will cost £7.00 per person. This is a reduced rate as the Club will be supported by Lympne Parish Council for the first year.

Menus will be available from the beginning of the month, so you can find out what the meal is that day. If you have access to the internet please go to Age UK Hythe and Lyminge, Our Services, Meals. You will then find menus for two weeks. If you do not have access to the internet please phone one of the numbers below.

Meals will need to be ordered by 6.00 pm on the day before the Lunch Club. Members will have to pay for their ordered meal if they don't turn up or haven't phoned by 9.30 am on the day to cancel. Payment will be taken when you attend.

All those that have shown an interest will have been sent a membership form to complete and return in advance. If you haven't received one and wish to join the Club please contact Denise 01303 37159 [Lympnelunchclub@gmail.com](mailto:Lympnelunchclub@gmail.com); Jon 07969 583915 [Jon.lodge@kent.gov.uk](mailto:Jon.lodge@kent.gov.uk) or Anne 07791324596. The Lunch Club will be operating on the second Friday of each month. Doors open at 12.15 pm for a 12.30-1.45 pm start. We will finish at 2.15 pm.

## THAT'S ENTERTAINMENT

Once again Maxine Burrows is directing and producing a Variety Show in aid of the Village Hall Development Fund. This will be a selection of acts performed by a variety of actors, who will be giving up their time free of charge. This will take place at the Village Hall on Saturday evening 12<sup>th</sup> October. Tickets will cost £10.00 and it is suggested people make up tables of eight and bring their own food and drink. The last similar event was a sell-out performance and a roaring success. Please contact Denise on 01303 237159 or Dave on 01303 269151 for information about tickets.

## LYMPNE YOUTH CLUB

The Parish Council will be meeting with Project Salus and the Village Hall Committee to discuss the future of the youth club which has had various taster sessions over the past few months. The hope is to have a full run of sessions starting at the second half of September but this will depend on available staff and volunteers. If you have any comments about the youth club or would like to volunteer to help please contact The Clerk on 01303 230525 or e mail [lympnepc@outlook.com](mailto:lympnepc@outlook.com)



**Home Instead**  
SENIOR CARE  
*To us, it's personal.*

THE QUEEN'S AWARDS  
FOR ENTERPRISE  
INNOVATION  
2018

A GREAT PLACE TO WORK



**JOIN OUR TEAM**

- Excellent training
- Previous experience not necessary
- Great rates of pay

Do you have a warm heart and caring nature? Then you sound **perfect** for us. We are always recruiting for CAREgivers to work with our lovely clients.

[www.homeinstead.co.uk/folkestone](http://www.homeinstead.co.uk/folkestone)  
300 Cheriton Road, Folkestone, Kent CT19 4DP

Each Home Instead Senior Care franchise office is independently owned and operated. Copyright © Home Instead 2017

**Home Instead**  
SENIOR CARE  
*To us, it's personal.*



## LOCAL FINANCIAL ADVICE

Tailored specifically for you

I live in West Hythe and can help you with advice or reviews, whether for Businesses or personally on any of the following products.

- Retirement Planning
- Inheritance Tax Planning
- Investments
- Pensions & Transfer advice
- Mortgage Protection
- Mortgages & Re-mortgages
- Income protection
- Critical Illness
- Business Protection
- Life cover

Transferring out of a Final Salary scheme is unlikely to be in the best interests of most people.

For a **FREE** initial consultation please contact:

**Corinne Gibbons** DipPFS CeMAP

Financial Planning Advisor

T 07930 273033



**CHARLES DERBY**

[corinne.gibbons@charlesderby.com](mailto:corinne.gibbons@charlesderby.com)  
[www.charlesderby-corinnegibbons.com](http://www.charlesderby-corinnegibbons.com)



Aerial view of village hall and playing fields

# THE RESULTS ARE IN

## PLAYING FIELD SURVEY RESULTS

Thank you to everyone who took the time to complete the questionnaire. The response rate was very pleasing with 176 (24%) completed representing 450 people. The age range of respondents was 55% under 50 years of age and 45% over 50. 169 residents (96%) considered the Playing Field required more facilities with only 7 residents (4%) wanting no action. The main responses and results are shown to the left. Surprisingly the Enclosed Free Run Dog and Exercise Area proved to be a 'Marmite' issue with either respondents 'Strongly Agreeing' or 'Strongly Disagreeing' resulting in 10<sup>th</sup> place. The least favoured facilities were Den Making, Skatepark and Kick Wall. The results proved there is an over whelming need to provide more facilities on the Playing Field for our community. Given the results an overall plan for the field will need to be established to see what is achievable. This may need to be a phased project. Advice will need to be sought from professionals, where appropriate and various suggested options for the overall design of the Playing Field will be displayed at further public consultations. Some of the facilities will need professional installation, whilst others may be able to be accomplished by some of the 44 people who indicated they would like to help achieve our much enhanced Playing Field.

**Village Hall Committee**

## RESULTS IN ORDER

1. Fenced Toddlers Area
2. Landscaped Area with therapeutic Garden
3. Football Pitch
4. Additional trees and flowering shrubs
5. Childrens adventure play area
6. Multipurpose all weather accessible 400m circular track
7. Picnic/BBQ area

# LYMPNE VILLAGE HALL FILM CLUB

[lympnefilms@gmail.com](mailto:lympnefilms@gmail.com)

FILM SHOWN 3<sup>RD</sup> TUESDAY OF THE MONTH  
(EXCEPT DEC)  
**FREE MEMBERSHIP**

Entrance fee of £5.00 covers refreshments  
and lucky draw ticket  
**7.15 for a 7.30 start**

**Tuesday Sept 17<sup>th</sup>:- The 2<sup>nd</sup> Best Exotic  
Marigold Hotel (PG)**

Sonny decides it's time to set up a second resort & get married

Starring Dev Patel, Judi Dench, Bill Nighy, Maggie Smith and Richard Gere

**Tuesday Oct 15<sup>th</sup>:- What We Did On Our  
Holiday (12)**

Doug, Abi and their children travel to a birthday party in Scotland

Starring Rosamund Pike, David Tennant & Billy Connolly

We reserve the right to show a substitute film should the need  
arise or to refuse admission. Children under 16 must be  
accompanied by an adult (ID will be requested)

## FUN QUIZ NIGHT



In aid of

**GUIDE DOGS**



**Celebrating Guide Dogs Week!**

**Saturday 5 October 2019 at 7.30pm**

**At Lympne Village Hall**

**Teams of 6-8 per table**

**Tickets £7.00 (includes Ploughman's Supper - please  
bring your own drink)**

**To book please contact Anne on:**

**Mobile: 07791324596 or [guidedogshythe-  
anddistrict@gmail.com](mailto:guidedogshythe-anddistrict@gmail.com)**



**Guide Dogs is a registered charity no 209617**

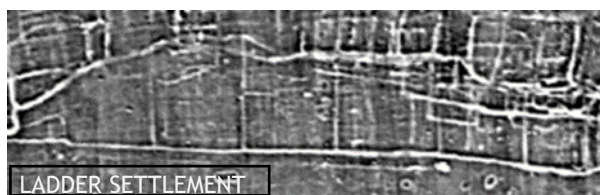
**LYMPNE VILLAGE SHOP** The shop in the village is now owned by Lympne Parish Council as it was left to the residents in the will of Shirley Newlands. The Parish Council are keen to ensure the future of the premises as a shop and post office for the residents and hope that the village will support the premises where they can. For the future, as the current tenancy continues, the Council will form a shop committee to oversee this valuable asset.

**STUDYING HISTORY AND  
ARCHAEOLOGY IN LYMPNE  
(SHAL)**

landscape. However they were clearly of importance in their own right, giving us an insight into the lives of the "ordinary" Roman people. Mike illustrated his talk with examples of settlements from Kent as well as elsewhere



Artists impression of Roman Roadside Settlement



LADDER SETTLEMENT

by a source of water - river, stream or springs. The properties were normally in a line on one or both sides of the road, were of wood construction, often circular and with their own defined boundaries. Some of the sites are described as 'ladder settlements'; the enclosures are attached to either side of the road and in places this looks like a ladder. The settlements' functions

were mainly agricultural but at Westhawk Farm there was significant production of iron and other metals, whilst a number of sites had a shrine within its area. Significantly, analysis of initial magnetic surveys locally has indicated features which could possibly relate to a roadside settlement in the area of Lympne. Investigations are ongoing.

SHAL now meets in the new annex to the Village Hall - The Harry Margary Hall.

Our next meeting will be on Tuesday 10 September when we will be delighted to once again welcome **Dr Sheila Sweetinburgh** to talk to us about "Mayor Making and Other Civic Celebrations in the Kentish Cinque Ports". For further information about this and other SHAL events, please contact Fiona Jarvest on 01303 237143 or email [fionajarvest1@gmail.com](mailto:fionajarvest1@gmail.com).

## Lympne Airfield History Society

Our September 3<sup>rd</sup> presentation is by **Tony Moor** who will outline various early forms of flight locally as he covers **Balloons, Airships, and Aeroplanes**. This will include Capelle-Ferne airship base, balloons at Lydd and Hythe, Folkestone and Lympne as important locations for other aircraft. We will also share news of a hitherto unknown Military Medal winner recently brought to our attention by a relative, who shot down an enemy fighter in May 1941. Looking ahead **November's** meeting will feature the Free French RAF pilot **Pierre Clostermann**, no stranger to Lympne Airfield. **Phil Reid** is our presenter on the night.



Please feel free to enjoy our continuing celebration of our Airfield in the wonderful surroundings of Lympne Castle's East Bar and main hall. **All meetings start at 7.30pm sharp. There is no charge.** Thanks to our generous hosts Richard and Rod at the castle, and Brian our regular barman..

For more information please contact: **John Simpson 01303 265078**

Email: [johnsimpson43@btinternet.com](mailto:johnsimpson43@btinternet.com)



**OAK**  
creative

Where creativity blossoms

[www.oakcreative.net](http://www.oakcreative.net)

10% OFF  
YOUR FIRST CONSULTATION  
WITH THIS ADVERT



**AT THE EVEGATE CENTRE  
SMEETH, ASHFORD**

*'We treat your pet as if it was our own'*

Specialising in all pet animals including exotics & avian. Calm and friendly family run clinic.

Open 7 days a week  
Full emergency service

Ample Parking  
**CALL 01303 813756**  
[www.montgomeryvets.co.uk](http://www.montgomeryvets.co.uk)

### YOUR OPINION COUNTS

#### TELL US YOURS

Lympne Parish Council are always keen to hear about residents suggestions or proposals to make our village a better place to live. If you wish to ask the Council a question for them to discuss at a Parish Council Meeting. Please write to the Clerk at  
29 Honeywood Close Lympne  
or  
e mail [lympnepc@outlook.com](mailto:lympnepc@outlook.com)

**KENT GARDENER** September brings us three quarters of the way through our gardening year and Christmas is not so far away. I try not to think about it and hope for an Indian Summer which will make it seem further away. But if you want Christmas flowering indoor bulbs now is the time to think about them. Prepared hyacinth bulbs will be arriving in the garden centres in the next week or two and are best bought straight away and potted up, if you want fragrant flowers by the end of December. Using a good bulb potting compost plant the hyacinths with the crown of the bulb just visible on the surface. With all indoor bulbs it is necessary for the bulbs to fill the bowl or pot with roots before the leaves and flower stems start to grow. This takes 10 - 14 weeks and is best achieved in moist, dark, cool conditions. After planting and watering wrap the bowls in sheets of newspaper and put them in the coolest shed or garage. By the middle of November bring indoors, water then place in a dark cupboard. Keep in the dark until you see the flower bud standing out from the neck of the bulb, when this happens you can bring them out to the required room, but not on to a bright window sill. Now you can enjoy your lovely fragrant blooms for Christmas. Don't give up on the veg garden yet. As we are busy harvesting the last of our veg, and gaps are now appearing in the veg plot, think about sowing some hardy salad leaves such as annual spinach, turnip tops and mustards, pak choi and many kales such as "Red Devil" and "Red Ruble". Seedling plants picked whole make a delicious addition to stir fries. If cooler weather threatens later on in the month, cover with a cloche which will also prevent the leaves turning leathery. There is never a dull moment being a gardener, there is always something to do.....

## ARE YOU SCAM ALERT

More and more examples of people being scammed by those unscrupulous individuals who want to exploit your fears and worries and get you to part with your cash. Some times these are small amounts but in some cases it can be thousands of pounds and destroy peoples lives.

If you become the victim of a scammer please speak to someone, do not feel embarrassed or worry about what may or may not have happened. By telling someone you may protect many others.

Kent County Council Trading Standards offer lots of advice to help you protect yourselves

[www.kent.gov.uk/leisure-and-community/community-safety/consumer-alerts](http://www.kent.gov.uk/leisure-and-community/community-safety/consumer-alerts)

to register for alerts

## SERVICES AT ST STEPHEN'S CHURCH, LYMPNE

### SEPTEMBER 2019

1st September— Parish Communion  
 8th September-Family service  
 15th September- Morning Worship  
 22nd September-Parish Communion  
 29th September- **Benifice Communion 10AM**

All Services at 11am unless stated  
 PLEASE FEEL WELCOME TO ATTEND

Tea and coffee are served  
 after all morning services

For all enquires please contact Rector Stephen McCaulay, [rector@saltwoodchurch.org](mailto:rector@saltwoodchurch.org) or Benifice Administrator on 03000 301 662 or

St Stephen's has a junior church called Steve's Sunday Club held on Sunday mornings at the Village Hall during school term times from 10.45- 11.45 (except the **Second** Sunday, when we **lead** the Family Worship at the church). We have fun groups for children aged 3-10 years old, and always welcome new faces. For more information please ring Christine Clover on 03000 301 662

### Country Matters with Michael Owen

Last month I wrote about the work needed for silage making. We used to have one 3.2 metre

mower. The row of grass was enough for the silage pick up machine to blow it into a 3-ton trailer x2. Drop the trailer of back tractor onto full second trailer to take home.

Now we have a contractor, the three mowers on one tractor cut 9 metres which are rowed into one. The powerful forage harvester blows it into a 20-ton capacity trailer with four large tractors plus a two-ton roller on rear of tractor to fill the clamp, to compress the grass in the clamp to get rid of air. What took fourteen days in the past now can be done in one. There is a large cost, but time saved and quality of silage is better. Now have 18 Frisian heifer calves plus approximately 18 beef bull calves.

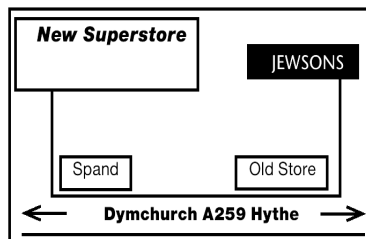
Started altering yard layout to put in two robotic milkers, plus moving the 800 Litre milk tank. As of today, August 20<sup>th</sup>, and still no idea re: Brexit. I'm told the difficult-to-make drugs are made in England, and imported ones come in bulk to us. Whether the E.U. want to punish us for leaving but tit for tat for both ways re: tariffs etc. We are still a big market for them, and we still have the biggest input for NATO except the USA. One way or another, just get it done.

**David Ian**  
 FURNITURE & BEDS  
 SUPERSTORE

Dymchurch Road, Hythe, Kent

01303 264052

Email: [sales@davidianfurnitureltd.com](mailto:sales@davidianfurnitureltd.com)



REMOVAL AND STORAGE  
 CALL NOW FOR A FREE QUOTE  
TERMS & CONDITIONS APPLY

OPEN 6 DAYS A WEEK

Mon - Fri 9am - 5.30pm Sat 9am - 5pm

Kent  
 County  
 Council  
[kent.gov.uk](http://kent.gov.uk)



TRADING  
 STANDARDS

APPROVED

working in partnership with  
**Checkatrade**

10%  
 Discount  
 for  
 Lympne  
 Residents  
 at

**David Ian**  
 FURNITURE & BEDS  
 SUPERSTORE

## LYPNE PARISH COUNCIL CONTACT DETAILS

If you have any queries regarding local issues, or any other matters you may wish to raise, you can contact Lypne Parish Councillors as follows: **You can contact us in writing using the Clerks address below:**

**Sally Edwards – Chair, Jo Howes – Vice Chair, Rob Auger John Burrows, Peter Geering, Kerry Boyland-Wood and Claire Yates, All Correspondence**

should be sent to the Clerk **Clerk: Jeff Lawrence 29 Honeywood Close Lypne Tel: 01303 230 525 e-mail: [lympnepc@outlook.com](mailto:lympnepc@outlook.com)** The next meeting of Lypne Parish Council will be on **Wednesday 4th September** at 7:00pm in the Village Hall Committee Room. An agenda will be put on the public notice boards before the meeting. All welcome

### Kent County Councillor

Your Kent County Councillor is Martin Whybrow

He can be contacted via e mail on  
[martin.whybrow@kent.gov.uk](mailto:martin.whybrow@kent.gov.uk)

## YOUR DISTRICT COUNCILLORS

### Doug Wade and John Wing

If you have any local issues you would like help with, please contact them as follows:

**Cllr Doug Wade– Email [teaway108@aol.com](mailto:teaway108@aol.com)**

**Cllr John Wing– Email [johnwing66@gmail.com](mailto:johnwing66@gmail.com)**

## KCC Community Warden

Jon Lodge can be contacted on  
**07969 583915**

**[Jon.lodge@kent.gov.uk](mailto:Jon.lodge@kent.gov.uk)**

For help and advice  
on home Security and safety.  
How to access Council services  
supporting you in the local  
community

## SELLINDGE and DISTRICT BOWLS CLUB

**SWAN LANE  
SELLINDGE  
TN25 6HB**

**Affiliated to Bowls  
England and the KCBA**

**Founded 1972**

**Why not try bowling  
this summer in a  
friendly, relaxed and  
enjoyable atmosphere.**

**Free coaching available  
from our six coaches.**

**Equipment will be  
provided but flat  
smooth soled shoes  
MUST be worn.**

**For more information  
contact Malcolm Cage  
on 01233 635307 or  
mobile 07966709783**

**Website :-  
[www.sellindgebowls.uk](http://www.sellindgebowls.uk)**

## OPERATION SUNSHINE

The new collector for the above worthy cause is Joan Clemens. If you have any donations big or small please contact her on  
**260 116**

## Lypne Art Club

Special attention is paid to complete beginners in our friendly Art Club, held in the Village Hall alternate Thursdays throughout the year; no materials needed until you find your feet drawing and painting a variety of subjects. Our resident artist is Helen, who gives friendly advice to all levels of ability and demonstrates different media techniques every time—guaranteed you will not be bored. **Ring Sonia for the dates: 01303 262183**

## LYPNE TODDLER CLUB

**Lypne Toddler Club** is a friendly group of parents, carers and grandparents who meet with little babies and children under the age of three on Tuesdays in term time, from 10.00 until 11.30. We have lots of toys and cups of tea or coffee. We also do art and sing nursery rhymes at the end. **The cost is £1.50 per family.** Please phone Joan on 01303 260 116 or Maureen on 01303 269 151 for more information.

## REFUSE COLLECTION DATES SEPTEMBER

**Recycling (Purple Lid/Black Box) and Food Waste will be collected on: Tuesday 3rd and 17th September. Non-Recyclables (Green Lid) and Food Waste will be collected on: Tuesday 10th and 24th September. Garden Waste will be collected on 4th and 18th September. Please do not put the lid on the Black Box—use the food waste container or a heavy object .**



## K.P Decorating

### K.P Decorating Services

- Exterior decorating
- Interior decorating
- Floor and wall tiling
- Laminate Flooring
- General house maintenance

**For a free quote and to discuss exactly what you need give us a call on: 07956455720 or visit our website [www.kpdecoratingservices.com](http://www.kpdecoratingservices.com)**



# CONTACTING THE POLICE

**Emergency calls** — In an emergency please telephone 999. If you are deaf, deafened, hard of hearing or have a speech impairment, a text phone is available on 18000. Use these numbers if:

- A crime is happening right now.
- Someone is in immediate danger, or there is a risk of serious damage to property.
- A suspect for a serious crime is nearby.
- There is a traffic collision involving injury or danger to other road users.

## Non-emergency calls

For all other calls to the police please telephone 101. If you are deaf, deafened, hard of hearing or have a speech impairment, a text phone is available on 18001 101. You should use these non-emergency numbers to:

- Report a crime not currently in progress - for example a stolen car, burglary, or damaged property.
- Report a minor traffic collision.
- Give information to the police about crime in your area.
- Speak to the police about a general enquiry.
- Contact a specific police officer or member of staff.

The total cost of a 101 Non-emergency call is 15p.

### ALDINGTON OSTEOPATHY

The Surgery, Goldwell Close, Aldington, Ashford TN25 7DY

We provide effective treatment for many conditions including: Back and Neck Pain, Shoulder Pain, Sports Injuries, Whiplash, Headaches, Ligament Sprain, Trapped Nerves, Arthritis, Knee Problems, Sciatica, Neuralgia, Tension. Also available: specialist osteopathic clinics for pregnancy related conditions and cranial therapy for babies. Early morning, evening and weekend appointments are available. Call to book an appointment: 01233 720 160.

### CLEAN SWEEP

Chimney sweeping service. Fully insured and registered Member of Institute of Chimney Sweeps. CCTV inspections, nests cleared, cowl fitted, chimneys rebuilt and all general chimney maintenance.

Call 01303 267 859 or 07831 232 828

### EXPERIENCED MATHS TEACHER KS2-GCSE

Available for private tuition. For details contact Rosie on 01303 268 333



07745 532075

Mobile Foot Health Practitioners. Treating and managing foot and nail conditions, corns, callus, fungal, fingernails, diabetic foot care

[www.eastkentfootcare.co.uk](http://www.eastkentfootcare.co.uk)

### CURTAINS

Handmade curtains, blinds and soft furnishings.

Curtain alterations.

Call Valery Wren—01303 237 755

### WRAIGHT'S MOWERS

NEWINGREEN (A20)

Servicing, Repairs, Sharpening Spares and Sales

all makes of petrol & electric mowers.

Benham Water Farm, Ashford Road (A20) Newingreen, CT214JD Opposite old race course Tel 07733293315

### WILCO PLUMBING & HEATING

Central Heating Installations & Repairs. Gas and oil boiler repairs and replacements, LPG, Solar and unvented hot water specialist. Landlords Gas Safety Inspectors, local experienced engineers.

Emergency plumbing 24/7 call out.

Registered with the Institute of Plumbing, Gas Safe Registered, OFTEC Registered, KCC Trading Standards Approved.

01303 862 173/07860 452640

[www.wilcoplumbing.co.uk](http://www.wilcoplumbing.co.uk)

### HOMEWISE HANDYMAN

Phil Carter, a local man for local needs. A prompt professional service. For all your home and garden maintenance needs, large and small: kitchens, bathrooms, building and decorating, gates, fencing, gardening, landscaping, rubbish cleared, drains, gutters, etc. TEL: 07512 312 516 or 01303 266 839.

### PUNCH & JUDY PLAYGROUP

At Lympe Village Hall. Quality care and learning for 2-4 year olds. Open Mondays, Wednesdays, Thursdays and Fridays during term time. Call 07527 111 584 or come and visit. OFSTED RATED GOOD IN ALL AREAS

### PROFESSIONAL MOBILE HAIRDRESSER

Cuts, Colours, Perms and Drying. Salon products used. 30 years experience. Fully insured. Call Cheryl on 07949 120 915 or email [hythehairdresser@gmail.com](mailto:hythehairdresser@gmail.com) for a price and appointment.

☆ STAR TUTORING ☆☆☆  
Boosting confidence and self-esteem fulfilling potential  
Maths English Phonics Reading KS1 and KS2 Kent Test  
Experienced Primary School Teachers  
Please call 07531 737428

### EDNA'S LADIES HAIRDRESSER and GENTLEMEN

Stone Street, Lympe

Call: 01303 268 098

### ASHTON TREE CARE

Hedge cutting, stump grinding, tree surgery

All work fully insured

Contact

07929 627 622

[ashtontreecare@gmail.com](mailto:ashtontreecare@gmail.com)

### EXPERIENCED LOCAL PRIMARY SCHOOL TEACHER

Places available for help with maths, literacy, reading

Kent Test Preparation and confidence building

Contact Linda Franklin

01303 260452

### BENSKO PEST CONTROL

Proud members of the National Pest Technicians Association.

Family run business, All pests covered.

Honest, friendly, reliable service at reasonable prices.

01303 487 401 or 07857 344 770

### TAXI IN THE VILLAGE.

Geoff is back! Short, long or any distance.

Airport, docks, etc. Ask for a quote. Phone 07703 444 814

### LOCAL BATHROOM and KITCHEN FITTER

Reliable, professional, 20 years experience fitting bathrooms, tiling, plumbing and general building work. Call Andrew on 07788 728 787 for a free estimate.

Accountant in the Village Bookkeeping, CIS and VAT Returns Sole traders, partnership and companies accounts preparation Personal Tax, Business Tax and Corporation Tax

Tel: Mariana Mackenzie: 07723 070 879

### GEMS LYMPNETED

Ladies & Gents Hairdressers

1a Belcaire Close Lympe

Under new ownership

50% OFF your first appointment  
Tel 01303 267 877

### THE BOWEN TECHNIQUE

BOWEN THERAPY IN LYMPNE

Back pain, arthritic pain, asthma, digestive disorders, migraine, practically any problem can potentially be addressed.

Lynne Rodgers, Cert ECBS.

Call 01303 268 910 or

[lynnealexrodgers@gmail.com](mailto:lynnealexrodgers@gmail.com)

# LOCAL TRADES

Also find us online at [www.lympne.net](http://www.lympne.net)

LYMPNE VILLAGE HALL can be hired for meetings, parties, concerts and other functions. Lympe residents pay a reduced hire charge. To make a booking please call 07497 370290 or email: [david86.jones@hotmail.com](mailto:david86.jones@hotmail.com)

## BENSKO CHIMNEY SWEEPS

Proud members of the National Association of Chimney Sweeps. Family run business. All types of fires swept. Bird's nests removed, cowls fitted. Friendly, reliable service at reasonable prices. Please call: 01303 487 401 Mobile: 07857 344 770

## RICHARD AJ THOMPSON LTD

Plumbing & heating engineer  
Gas Safe Registered-No 513449,  
22 years experience.  
Central heating boiler servicing,  
repairs and installations.  
All domestic plumbing repairs,  
Water softeners, gas fires, cookers  
and water heaters.  
Landlord's Safety Certificates.  
Tel 01303 266 273  
Mob 07540 333 250

Every WEDNESDAY



WEDDINGS MOBILE FISH & CHIP UNIT KIDS PARTIES  
CHRISTENINGS CHARITY EVENTS SCHOOL FETES FISH SUPPERS PARTIES BOOT FAIRS

CALL: 07955 926 835 FOR BOOKINGS & DETAILS

Lympe Stores 5-7pm

## Oakley Wills Services

Email: [oakleywillsservices@gmail.com](mailto:oakleywillsservices@gmail.com)  
**07391 891 188**  
Window cleaning,  
facias & soffits, conservatory  
roof, drive way cleaning,  
garden and handyman services

## EX-JOB AND DOGS

Retired local police officer offering  
Dog Walking, Dog Day Care  
Boarding in Home Environment  
Home Watch Service Long/short term  
Including Cat Care  
Contact Kerry  
with your requirements  
CONTACT 07791 095 895  
[exjob17@gmail.com](mailto:exjob17@gmail.com)

## BED & BREAKFAST

Corner House Bed & Breakfast  
Aldington Road  
Lympe, Kent CT21 4LF  
Two double, one twin, all en-suite  
Telephone: 01303 268 108

## DN PLASTERING SERVICES

Local, Trustworthy & Reliable  
Over 25 Years Experience  
Call Darren 07932 002 442  
[dnplasteringservices@gmail.com](mailto:dnplasteringservices@gmail.com)

## SPOTLIGHT PEST CONTROL SERVICES LTD

British Pest Control  
Association member.  
General pest control including  
rats, mice, moles, wasps, ants,  
fleas, bird spikes and general  
proofing Fast, friendly and  
reliable.  
Contact Dave on 07715211899.  
[info@spotlightpestcontrolkent.co.uk](mailto:info@spotlightpestcontrolkent.co.uk)  
[www.spotlightpestcontrolkent.co.uk](http://www.spotlightpestcontrolkent.co.uk)

## PAINTING, DECORATING & HANDYMAN

Interior and Exterior – All types  
undertaken. FREE ESTIMATES.  
30 YEARS EXPERIENCE  
Call Mick Cockburn  
Mobile 07769 221 871

## DILTON MINI SKIP HIRE

Ballast, hardcore, sand,  
topsoil supplied. Registered waste  
carrier.  
Phone 01303 812 448, or  
Mobile 07799 433 754

## YOUR COMPUTER PROBLEMS SOLVED

Call out service. PC/Laptop  
repairs, slow running, broken  
screens, memory upgrades, virus  
removal, data recovery. Enquiries  
welcome.  
Call Rob Gardener 07807 180 906

## PLUMBER

City & Guilds qualified  
Affordable, Reliable and Local  
All work fully insured and guaran-  
teed. Wide range of hot and cold  
water services. See website for  
further details, rates and customer  
feedback.  
Call now on 07899 034 695  
for a no-obligation, free quote  
or visit our website:  
[www.condicoplumbing.co.uk](http://www.condicoplumbing.co.uk)

## YOUNG'S ACCOUNTANCY SERVICES

Accountancy, Bookkeeping,  
Payroll & VAT Services.  
Mob: 07561 112 178.  
Tel: 01303 259 734  
[contactyoungstoday@gmail.com](mailto:contactyoungstoday@gmail.com)

## KENT TEST TUITION

Qualified, experienced teacher  
available for private tuition in  
English, maths, etc.  
Tel. 01303 265 253

## OLD ENGLISH PINE

One of the best loved furniture and lifestyle  
shops for miles around.  
Please pay us a visit  
100/102 Sandgate Highstreet  
Sandgate CT20 3BY  
01303 248560 (open 7 days a week)p 44

## ADVERTISE HERE

Contact the editor on [lympnepc@outlook.com](mailto:lympnepc@outlook.com)

## ADVERTISE HERE

Contact the  
editor on  
[lympnepc@outlook.com](mailto:lympnepc@outlook.com)

## Piano Lessons in Etchinghill

Kathy Robinson DipLCM



- ♪ For children and adults
- ♪ Private or group lessons
- ♪ Exams or just for fun
- ♪ Music theory
- ♪ Reasonable rates

Tel: 07930919340  
Email: [kathyhet@gmail.com](mailto:kathyhet@gmail.com)

## CN ELECTRICAL

DOMESTIC &  
RESIDENTIAL ELECTRICIAN  
New Sockets, Fault Finding,  
Rewires, Lighting,  
Consumer units and much more!  
NICEIC REGISTERED ELECTRICIAN

Contact Chris  
Mob : 07826 505671  
[www.cnelectrical.co.uk](http://www.cnelectrical.co.uk)  
[info@cnelectrical.co.uk](mailto:info@cnelectrical.co.uk)

